

# Distribution and abundance of Baffin Bay narwhals

Pierre Richard  
Research Scientist,  
DFO Arctic Research, Winnipeg



Fisheries and Oceans  
Canada

Pêches et Océans  
Canada

Canada

# Narwhal surveys August 2002-2004

- Design was to cover as much known or suspected narwhal summer habitat as possible



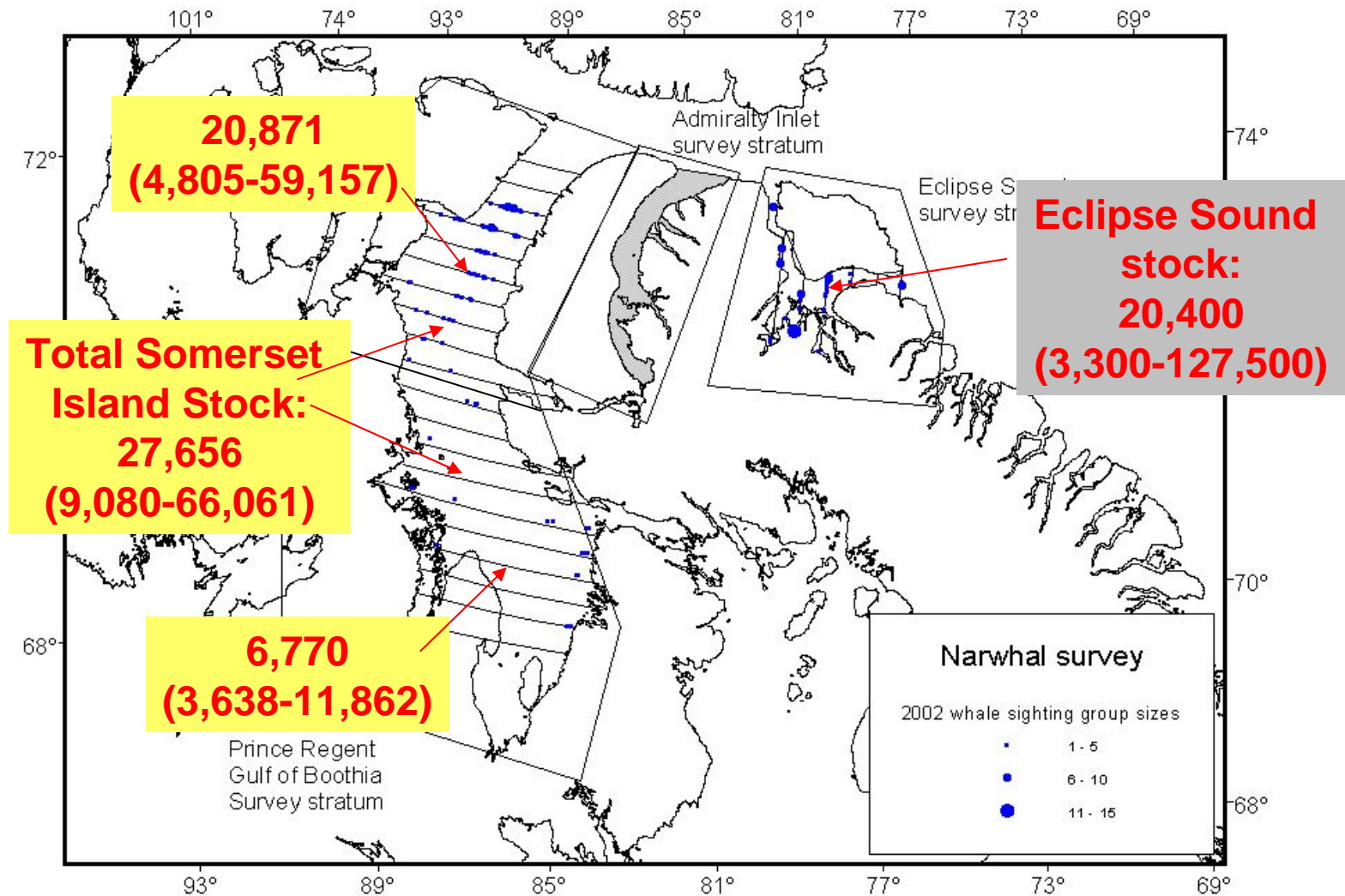
**DH-6 Twin Otter**



# Double-observer left and right

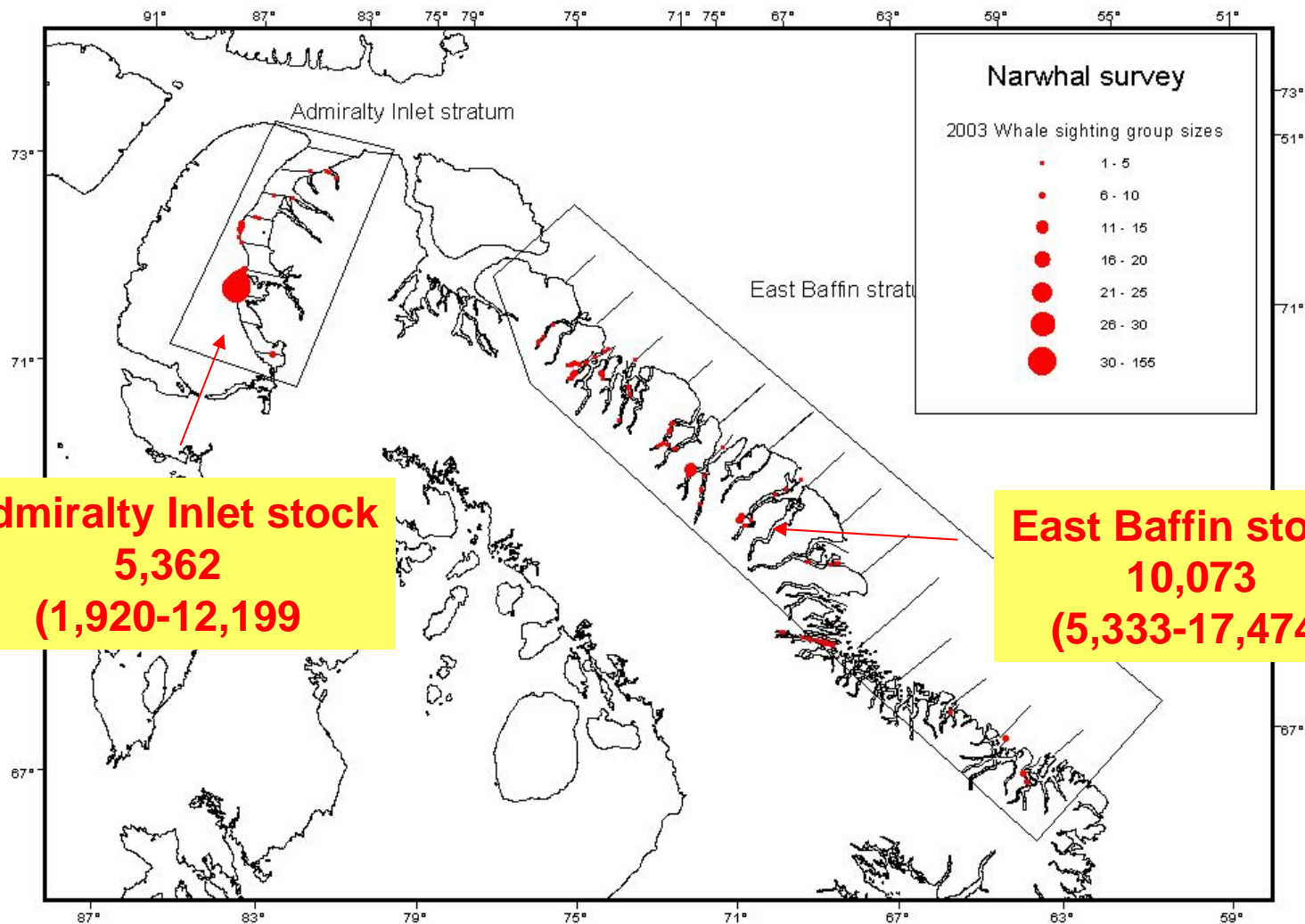


# Estimates 2002



Sighting sizes 2002

# Estimates 2003



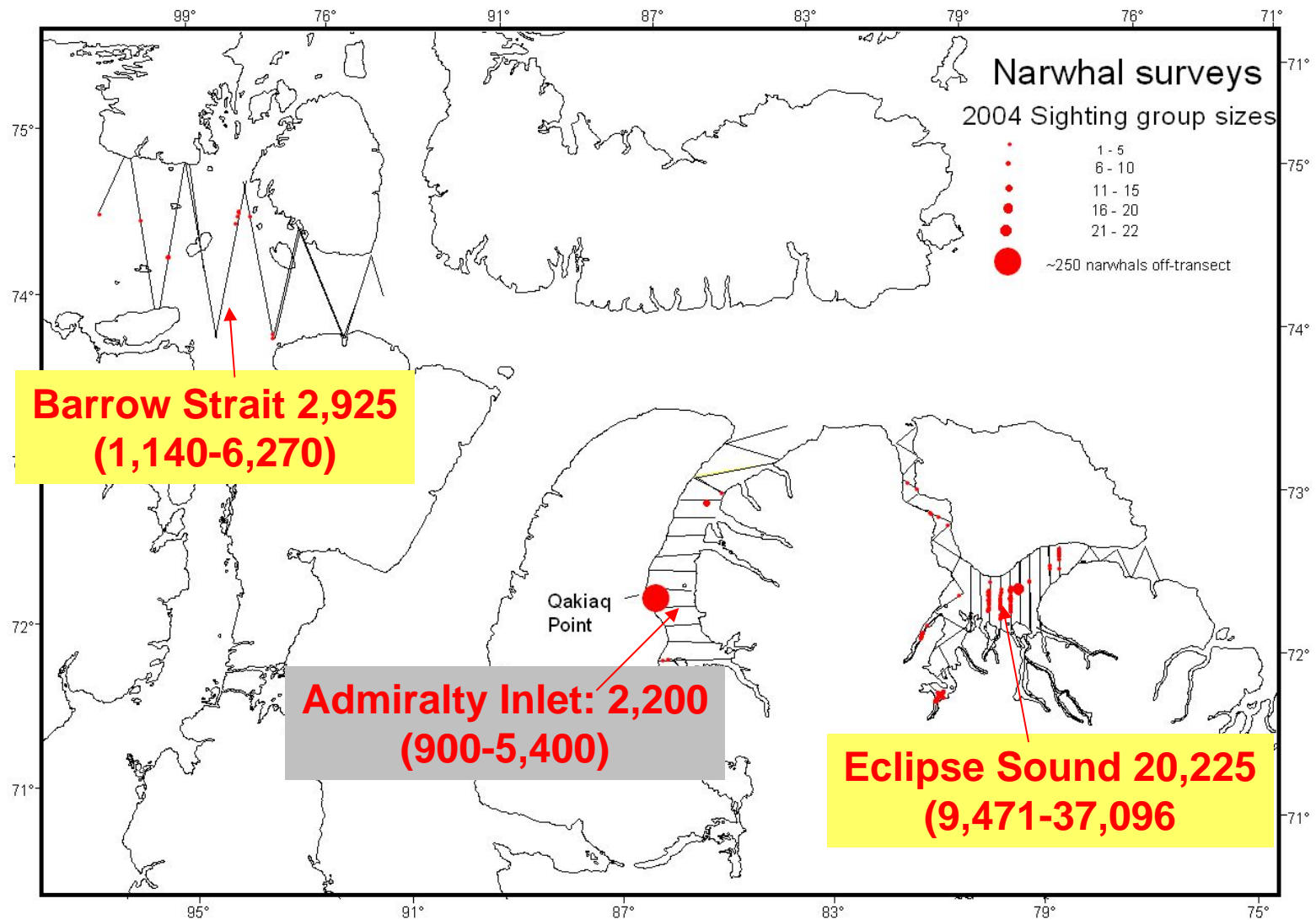
**Admiralty Inlet stock**  
**5,362**  
**(1,920-12,199)**

**East Baffin stock:**  
**10,073**  
**(5,333-17,474)**

Sighting group sizes 2003



# Estimates 2004

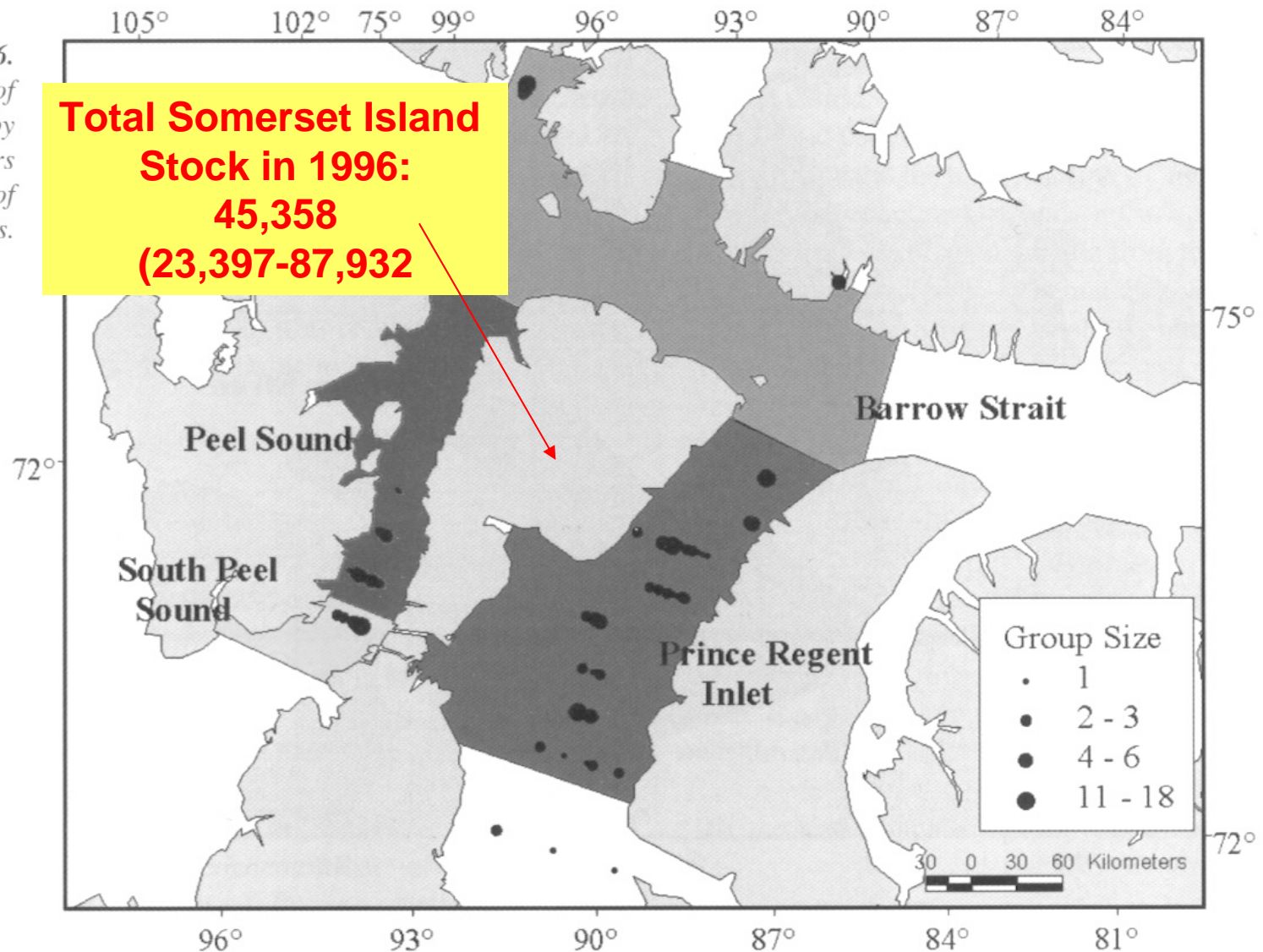


# 1996 survey estimates

**Fig. 6.**

*Sightings of narwhals made by the front observers with definitions of regions.*

**Total Somerset Island  
Stock in 1996:  
45,358  
(23,397-87,932)**





Tima