

Community-based Monitoring Network

ᓄᓇᓕᓕ ᓇᓕᓕᓂᓐ ᓂᓄᓂᓕᓂᓐ ᓂᓄᓂᓕᓂᓐ ᓂᓄᓂᓕᓂᓐ ᓂᓄᓂᓕᓂᓐ



Kugaaruk: October 2015 to April 2019

ᓂᓄᓂᓕᓂᓐ: ᓂᓄᓂᓕᓂᓐ 2015 ᓂᓄᓂᓕᓂᓐ ᓂᓄᓂᓕᓂᓐ 2019

$$m_{\tilde{e}_L}^C \, q_{\tilde{L}}^{\tau^b} \, \tilde{q}_{\tilde{L}}^{\tau^b} \Delta_{\tilde{L}}^{\tau^a} \, m_{\tilde{e}_R}^C \, \Delta_{\tilde{R}}^{\tau^b} d_{\tilde{R}}^{\tau^b}$$

ᐃᓚᐅᐅ

[illegible]

The Community-based Monitoring Network is an initiative of the Nunavut Wildlife Management Board (NWMB or Board) that relies upon skilled and accomplished Nunavummiut harvesters to record data on wildlife harvests and observations. Participating harvesters are trained to use rugged hand-held computers with custom-designed software to record wildlife sightings, harvests, and other environmental observations while on the land. When harvesters return from the land, Data Clerks in the community transfer the information into a database of knowledge.

[illegible]





Participating harvesters enter a data sharing agreement with the Nunavut Wildlife Management Board. The agreement grants harvesters full ownership of the data they collect, but gives the Nunavut Wildlife Management Board licence to use, publish, and distribute the information for the purposes of meeting its wildlife research and management objectives. The privacy of the harvesters is protected as the Nunavut Wildlife Management Board will not make names, identification numbers, or specific travel routes available.

[illegible]

The Community-based Monitoring Network was launched in Arviat, Cambridge Bay, and Sanikiluaq in 2012 and ran for three years. The project then moved to Clyde River and Kugaaruk in the fall of 2015. Data collection in Clyde River ended in September 2018, while Kugaarumiut continued participating until Spring 2019. Baker Lake and Taloyoak are the most recent additions, with another community to join the program in Summer 2019.

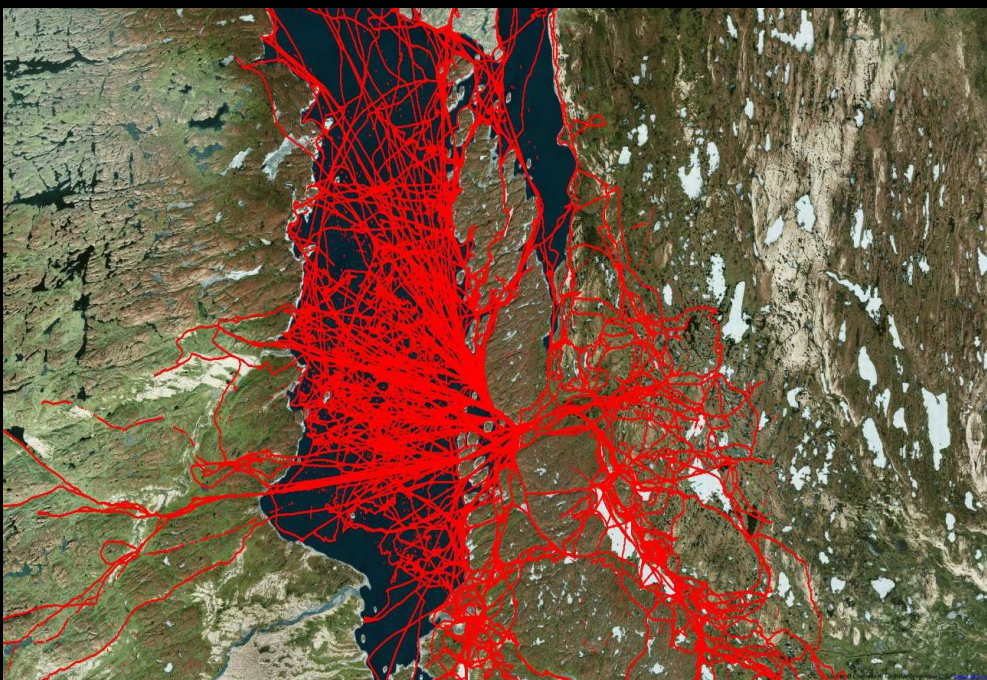
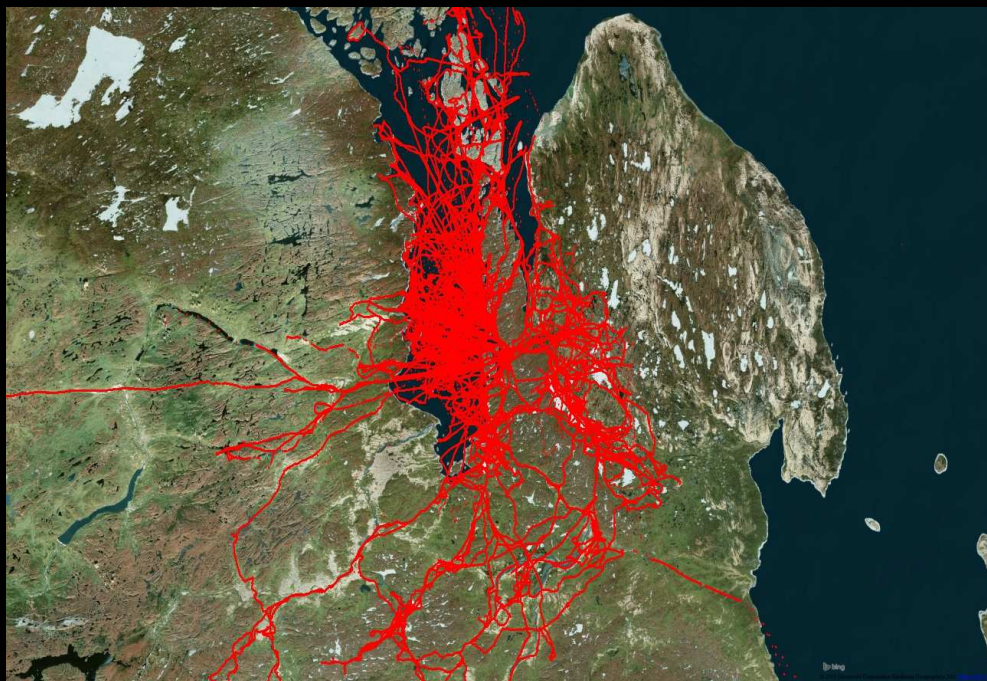
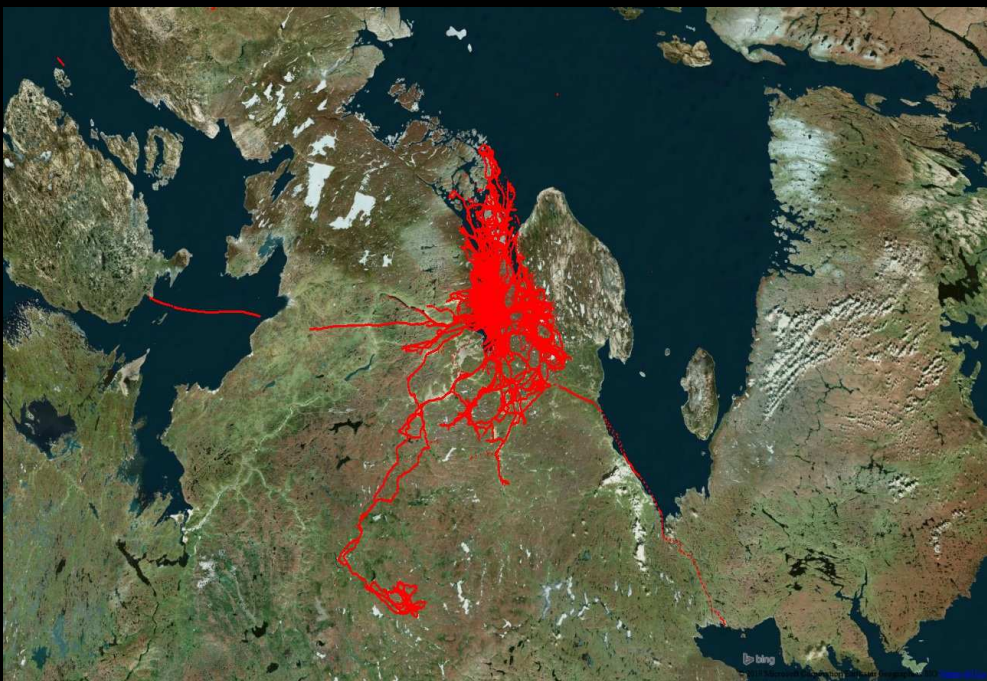
መደረግ ያለው የኮሙኒቲ ተኮሮ ምርመራ ስርዓት በአርቪያት, ካምብሪጅ ባይ, ሳኒኪሊዋክ 2012 ዓ.ም. ጀመረው ሲሆን ለሦስት ዓመታት ሲቆይ ነበር። ይህ ስርዓት በክሊድ ባር እና በኪጋላሩክ በሰላምተው የ2015 ዓ.ም. ጀመረው ሲሆን በክሊድ ባር የ2018 ዓ.ም. ለመጨረሻው ሲቆይ ነበር። ኪጋላሩክም በሰላምተው የ2019 ዓ.ም. ሲቆይ ነበር። ባኬር ሌይክ እና ታሎዮኦክ የተጨመሩት በሰላምተው የ2019 ዓ.ም. ሲቆዩ ነበር።



Kugaaruk 2015-2019

ᑕᑭᑭᑦᑭ 2015-2019





Between October 2015 and January 2019, 18 Kugaaruk harvesters recorded a combined total of 37,732 of travel data in and around their community.

ᐊᑦᓴᓂ ᐅᑦᑐᕈᓂ 2015 ᐱᒻᒪᑐ ᓃᓄᐱᓂ 2019, 18 ᐳᓖᓗᓯ ᐱᓚᓇᓯᓂᓂᑦ
ᐸᐸᓴᐅᓗᑦ ᓆᐸᑐᓯᑦ 37,732 ᓯᐸᐅᑐᓗᓂᑦ ᐱᐅᑦᐸᓯᐲᑦᑐᓂᑦ ᐱᒻᒪᑐ ᓴᓂᓯᓴᓴᓂ
ᓄᓇᓴᐸ.



Fish

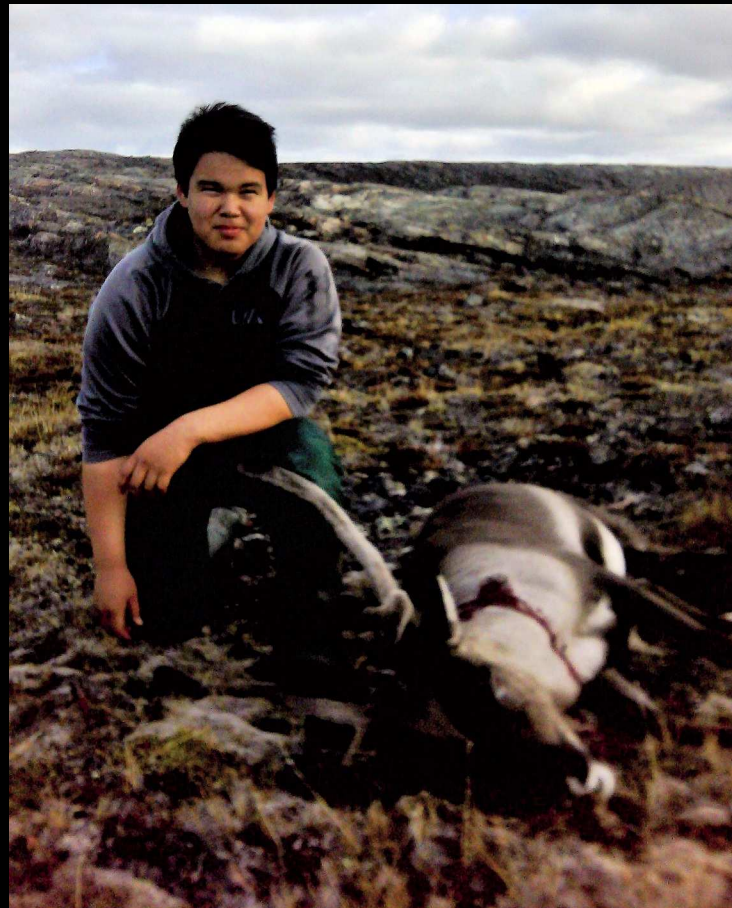
ᐃᑦᐅᐅᐃᑦ





Caribou

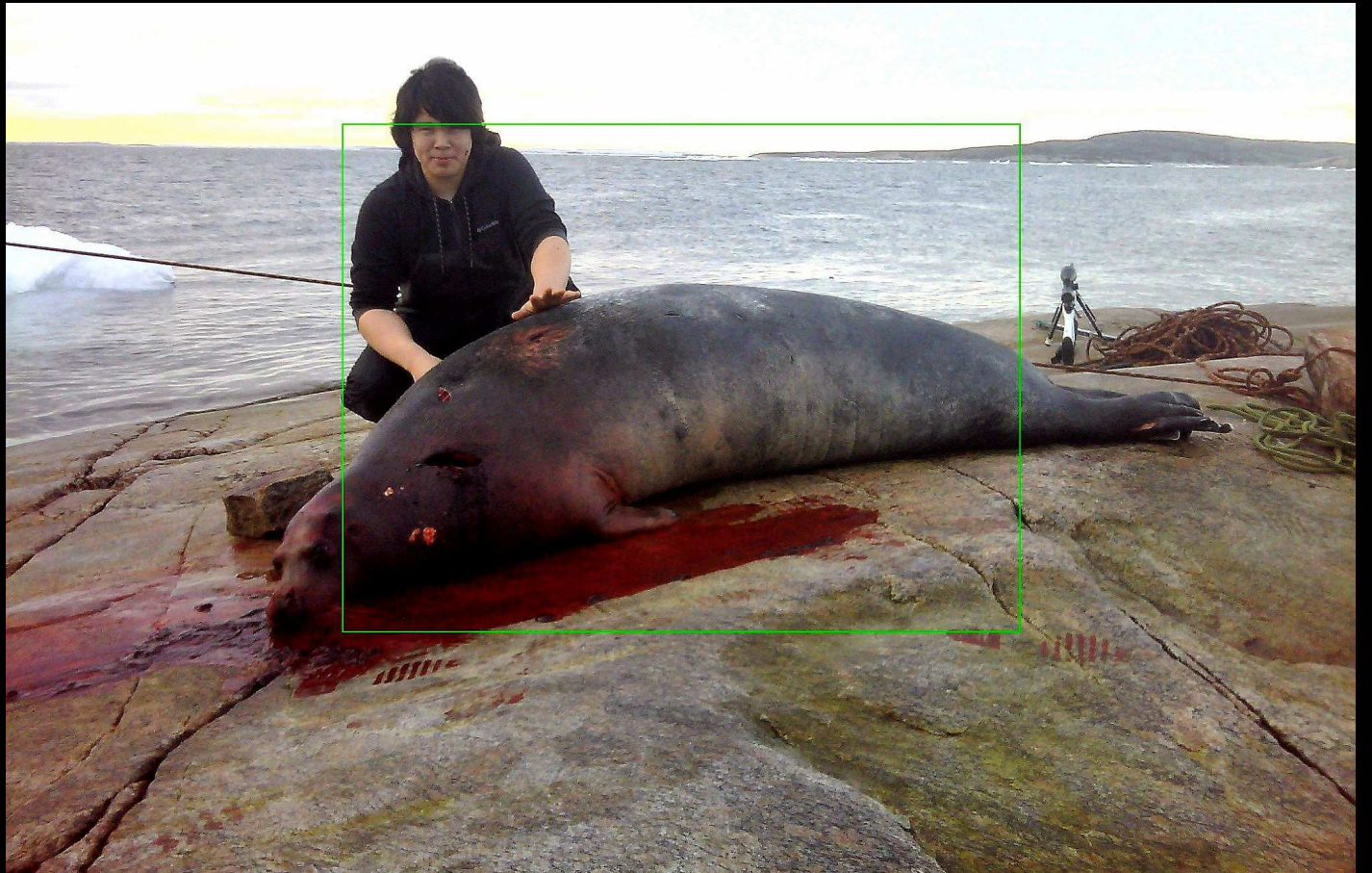
ᑕᑦᑭᑦᑭᑦ





Seals

ᐱᐅᐅᐅ





Narwhal

△^c C^{me} △^c





Foxes and
Wolves

ᠨᠠᠯᠤᠰᠤᠨ ᠠᠯᠤᠰᠤ
ᠠᠯᠤᠰᠤ





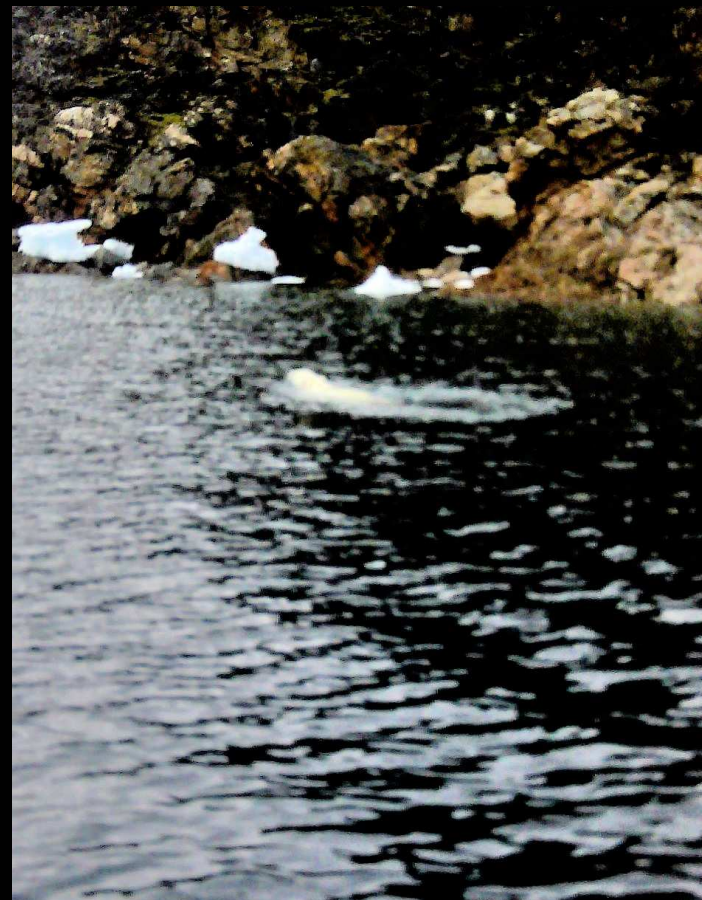




Musk Oxen

▷Γ⁶ΛΔ^c







Polar Bears

ᐱᐅᐅᐅᐅ



Other Participating Communities

ᐱᓂᓂᓂ ᐱᓂᓂᓂᓂᓂᓂ

ᓂᓂᓂᓂ





Arviat ᐱᐅᐱᐅᐅᐅ
2012-2015



Cambridge Bay ᐃᑦᑲᑲᑦᑲᑦᑲᑦᑲᑦᑲᑦ

2012-2015







Clyde River

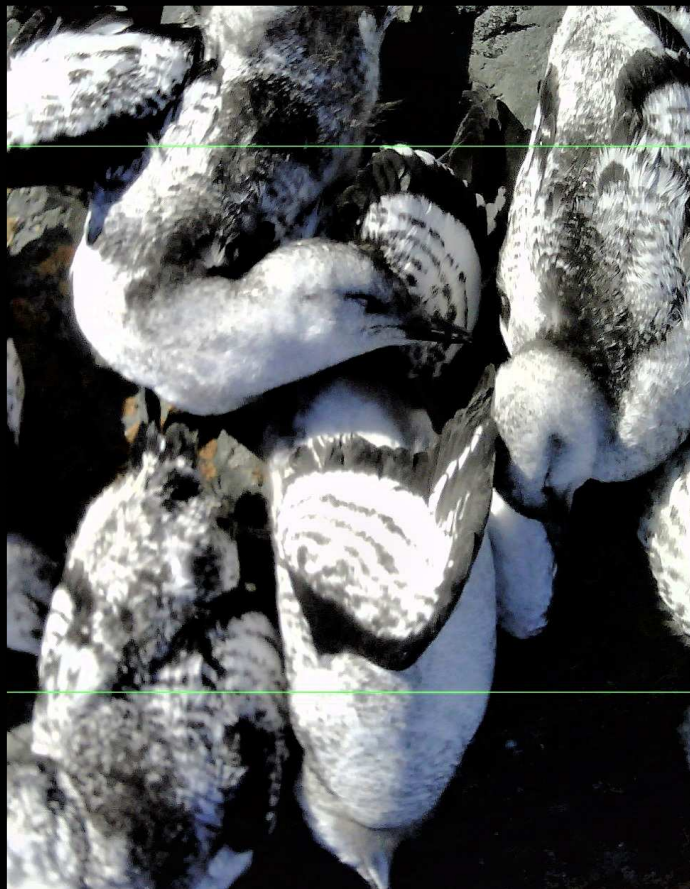
ԶՐԳՈՇԼԱՅ

2015-2018

2012-2015



Sanikiluaq ᐱᓂᕈᐅᐃᑦ





March 2019

On behalf of the Nunavut Wildlife Management Board, I would like to thank participating Kugaaruk harvesters for becoming partners in the Community-based Monitoring Network. Your efforts have contributed valuable information towards improving wildlife management practices in Nunavut.

In addition, the project improves communication between communities, regions, government, and other wildlife management agencies, while promoting stewardship and cooperative management. I look forward to building on this relationship in future, as we work together to conserve wildlife and wildlife habitat for the long-term benefit of all Nunavut residents, while fully respecting Inuit harvesting rights and priorities.

Yours truly,

Daniel Shewchuk
Chair, Nunavut Wildlife Management Board

ጥርሶ 2019

[illegible][illegible]
$$\Delta C^c P^a \cdot \mathcal{D}^c \cdot \mathcal{P}^b,$$

Ḳσ◁▷Ḳ

Δ^CΥ^Q▷C^{qb}, max^{CΓ} ▷L↗_LΠ^q↖Δ^C bΠL^qΥ^C





