

ᑦᕈᕈᑦ ᑕᑦᑕᑦ ᑖᑦᑕᑦ ᑖᑦᑕᑦ ᑖᑦᑕᑦ ᑖᑦᑕᑦ

Qikiqtaaluk Corporation Overview

ᑕᑦᑕᑦ ᑕᑦᑕᑦ ᑕᑦᑕᑦ:
 ᑕᑦᑕᑦ ᑕᑦᑕᑦ ᑕᑦᑕᑦ ᑕᑦᑕᑦ ᑕᑦᑕᑦ
 ᑕᑦᑕᑦ ᑕᑦᑕᑦ ᑕᑦᑕᑦ ᑕᑦᑕᑦ ᑕᑦᑕᑦ
 ᑕᑦᑕᑦ ᑕᑦᑕᑦ ᑕᑦᑕᑦ ᑕᑦᑕᑦ ᑕᑦᑕᑦ
 ᑕᑦᑕᑦ ᑕᑦᑕᑦ ᑕᑦᑕᑦ ᑕᑦᑕᑦ

Mission Statement
 To create meaningful economic,
 employment and career development
 opportunities for Inuit

- ᑕᑦᑕᑦ ᑕᑦᑕᑦ ᑕᑦᑕᑦ ᑕᑦᑕᑦ ᑕᑦᑕᑦ 1983
- 100% ᑕᑦᑕᑦ ᑕᑦᑕᑦ ᑕᑦᑕᑦ ᑕᑦᑕᑦ ᑕᑦᑕᑦ ᑕᑦᑕᑦ ᑕᑦᑕᑦ ᑕᑦᑕᑦ
- ᑕᑦᑕᑦ ᑕᑦᑕᑦ 13 ᑕᑦᑕᑦ ᑕᑦᑕᑦ ᑕᑦᑕᑦ ᑕᑦᑕᑦ ᑕᑦᑕᑦ 14,000 ᑕᑦᑕᑦ
- ᑕᑦᑕᑦ 81% ᑕᑦᑕᑦ ᑕᑦᑕᑦ ᑕᑦᑕᑦ ᑕᑦᑕᑦ ᑕᑦᑕᑦ
- 30 ᑕᑦᑕᑦ (ᑕᑦᑕᑦ ᑕᑦᑕᑦ ᑕᑦᑕᑦ ᑕᑦᑕᑦ ᑕᑦᑕᑦ ᑕᑦᑕᑦ ᑕᑦᑕᑦ ᑕᑦᑕᑦ ᑕᑦᑕᑦ)

- Inuit birthright corporation established in 1983
- 100% owned by QIA
- Represents 13 communities across the Qikiqtani Region and over 14,000 Inuit
- More than 81% of the employees are Nunavut Inuit
- 30 companies (subsidiaries, joint-ventures, partnership and affiliated)



ᑦᕿᕿᑦᑕᓗᑦ ᑖᑖᑦᑎᓴᑦ ᑕᕿᑕᑦᑎᑦᑎᑦᑎᑦ

ᑦᕿᕿᑦᑕᓗᑦ ᑖᑖᑦᑎᓴᑦ ᑲᑎᓴᓴᑦᕿ
 ᑭᑕᑦᑎᓴᑦᑕᑦᑕᑦᑕᑦ ᑦᕿᕿᑦᑕᑭ
 ᑕᑦᑕᑦ ᑲᑕᓴᓴᑦᑎᑦᑎᑦᑎᑦ

QC is governed by a Board of Directors that is selected by QIA



ᕿᑦᑕᑦᑎᓴᑦᑕᑦᑕᑦᑕᑦᑕᑦ
 ᑕᑦᑕᑦᑎᓴᑦᑕᑦ
 ᑕᑦᑕᑦᑎᓴᑦᑕᑦᑕᑦ
 ᑖᑖᑦᑎᓴᑦ
 For-profit business development corporation

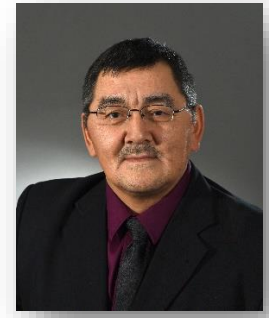


ᕿᑦᑕᑦᑎᓴᑦᑕᑦᑕᑦᑕᑦᑕᑦ
 ᑕᑦᑕᑦᑎᓴᑦᑕᑦᑕᑦᑕᑦ
 ᑕᑦᑕᑦᑎᓴᑦ
 Non-profit economic development association

QC Governance

ᑕᑦᑕᑦᑎᓴᑦᑕᑦᑕᑦᑕᑦ | Chair

ᑕᑦᑕᑦᑎᓴᑦᑕᑦᑕᑦᑕᑦ ᑕᑦᑕᑦᑎᓴᑦᑕᑦᑕᑦ | Vice Chair

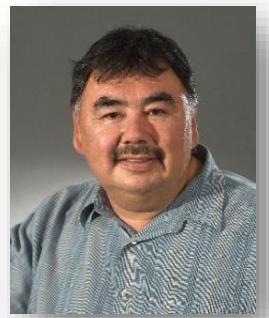


ᑕᑦᑕᑦᑎᓴᑦᑕᑦᑕᑦ
 Olayuk Akesuk

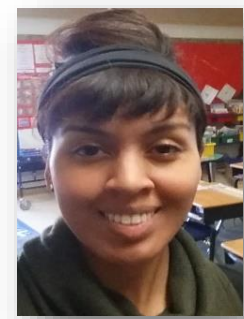


ᑕᑦᑕᑦᑎᓴᑦᑕᑦᑕᑦ
 Anne Curley

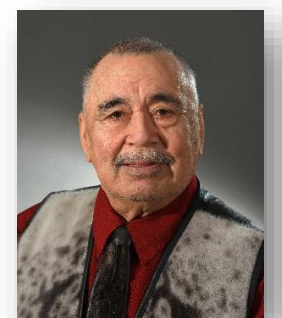
ᑕᑦᑕᑦᑎᓴᑦ | Directors



ᑕᑦᑕᑦᑎᓴᑦᑕᑦᑕᑦ
 Mathew Alaing



ᑕᑦᑕᑦᑎᓴᑦᑕᑦᑕᑦ ᑕᑦᑕᑦᑎᓴᑦᑕᑦᑕᑦ
 Miali-Elise Coley



ᑕᑦᑕᑦᑎᓴᑦᑕᑦᑕᑦ
 Ludy Pudluk



ບໍລິສັດ ລາຄາລຳ ແລະ ຈຸດສະໜອງ COMPANIES AND SECTORS OF ACTIVITY

ວິໄນ | LEGEND

- ➡ ມີຮຸ້ນຮັບ 100% ມີຮຸ້ນຮັບ ຈາກ QC
Subsidiaries 100% owned by QC
- ➡ ມີຮຸ້ນຮັບ ຈາກ ບໍລິສັດ ມີຮຸ້ນຮັບ 51% ມີຮຸ້ນຮັບ ຈາກ QC
Joint-Ventures Majority owned by QC
- ➡ ມີຮຸ້ນຮັບ ຈາກ ບໍລິສັດ ມີຮຸ້ນຮັບ < 51% ມີຮຸ້ນຮັບ ຈາກ QC
Joint-Ventures < 51% owned by QC
- ➡ ບໍລິສັດ ມີຮຸ້ນຮັບ | Affiliated

ສາມາດ, ສາມາດ ຈຸດສະໜອງ ລາຄາລຳ RETAIL, TRADE AND SERVICES

ການຂົນສົ່ງ ແລະ ການສື່ສານ TRANSPORTATION AND COMMUNICATION

ການສ້າງສັນ ແລະ ການສ້າງສັນ ທຳມະດາ CONSTRUCTION AND MAJOR PROJECTS

ການປ່າໄມ້ ແລະ ການປ່າໄມ້ FISHERIES AND MARINE SERVICES

- ➡ ມີຮຸ້ນຮັບ ມີຮຸ້ນຮັບ ມີຮຸ້ນຮັບ ມີຮຸ້ນຮັບ
Qikiqtaaluk Business Development Corporation
- ➡ ມີຮຸ້ນຮັບ ສາມາດ ສາມາດ ສາມາດ ສາມາດ
Qikiqtani Retail Services Ltd.
- ➡ ມີຮຸ້ນຮັບ ມີຮຸ້ນຮັບ ມີຮຸ້ນຮັບ ມີຮຸ້ນຮັບ
Qikiqtani Resource Agency Ltd.
- ➡ ມີຮຸ້ນຮັບ ມີຮຸ້ນຮັບ ມີຮຸ້ນຮັບ ມີຮຸ້ນຮັບ
Nunavut Nukkiksautiit Corporation
- ➡ ມີຮຸ້ນຮັບ ມີຮຸ້ນຮັບ ມີຮຸ້ນຮັບ ມີຮຸ້ນຮັບ
Qikiqtaaluk Environmental Inc.
- ➡ QC ມີຮຸ້ນຮັບ ມີຮຸ້ນຮັບ ມີຮຸ້ນຮັບ
QC-Scarlet Security Services Inc.
- ➡ ມີຮຸ້ນຮັບ ມີຮຸ້ນຮັບ
Larga Baffin Ltd.
- ➡ ມີຮຸ້ນຮັບ ມີຮຸ້ນຮັບ
Toromont Arctic Inc.

- ➡ ມີຮຸ້ນຮັບ ມີຮຸ້ນຮັບ ມີຮຸ້ນຮັບ ມີຮຸ້ນຮັບ
Qikiqtani First Aviation Ltd. (QFAL)
- ➡ ມີຮຸ້ນຮັບ ມີຮຸ້ນຮັບ ມີຮຸ້ນຮັບ ມີຮຸ້ນຮັບ
Nunavut Petroleum Corporation
➡ ມີຮຸ້ນຮັບ ມີຮຸ້ນຮັບ
Uqsuq Corporation
- ➡ ມີຮຸ້ນຮັບ ມີຮຸ້ນຮັບ ມີຮຸ້ນຮັບ
Nunavut Sealink and Supply Inc. (NSSI)
- ➡ QC ມີຮຸ້ນຮັບ (ຮຸ້ນຮັບ)
QC Canadian (Helicopters)

- ➡ 3379442 ມີຮຸ້ນຮັບ ມີຮຸ້ນຮັບ
3379442 Canada Inc.
- ➡ ມີຮຸ້ນຮັບ ມີຮຸ້ນຮັບ
Qikiqtaaluk Properties Inc.
- ➡ ມີຮຸ້ນຮັບ ມີຮຸ້ນຮັບ ມີຮຸ້ນຮັບ
Qikiqtani Industry Ltd.
- ➡ ມີຮຸ້ນຮັບ ມີຮຸ້ນຮັບ
Akiuq Corporation
- ➡ ມີຮຸ້ນຮັບ ມີຮຸ້ນຮັບ
Sanavalliani Ltd.
- ➡ NCC ມີຮຸ້ນຮັບ ມີຮຸ້ນຮັບ ມີຮຸ້ນຮັບ
NCC Investment Group
- ➡ ມີຮຸ້ນຮັບ ມີຮຸ້ນຮັບ
Nunasi Corporation
- ➡ QC/ຊາວ ມີຮຸ້ນຮັບ ມີຮຸ້ນຮັບ ມີຮຸ້ນຮັບ
ໂຄງສ້າງ ແລະ ການສື່ສານ
QC/ATCO Structures & Logistics
- ➡ CL ມີຮຸ້ນຮັບ ມີຮຸ້ນຮັບ ມີຮຸ້ນຮັບ
ໂຄງສ້າງ ມີຮຸ້ນຮັບ ມີຮຸ້ນຮັບ
Pan Arctic Inuit Logistics Corp

- ➡ ມີຮຸ້ນຮັບ ມີຮຸ້ນຮັບ ມີຮຸ້ນຮັບ
Qikiqtaaluk Fisheries Corporation
- ➡ ມີຮຸ້ນຮັບ ມີຮຸ້ນຮັບ
Unaaq Fisheries
- ➡ ມີຮຸ້ນຮັບ ມີຮຸ້ນຮັບ | ມີຮຸ້ນຮັບ
Sikku Corporation
➡ ມີຮຸ້ນຮັບ ມີຮຸ້ນຮັບ | ມີຮຸ້ນຮັບ
Tulaktarvik Inc
- ➡ ມີຮຸ້ນຮັບ ມີຮຸ້ນຮັບ ມີຮຸ້ນຮັບ ມີຮຸ້ນຮັບ
Natsiq Investment Corporation
➡ ມີຮຸ້ນຮັບ ມີຮຸ້ນຮັບ ມີຮຸ້ນຮັບ
Arctic Ocean Development Corp.
- ➡ ມີຮຸ້ນຮັບ ມີຮຸ້ນຮັບ ມີຮຸ້ນຮັບ
Northern Shrimp Research Foundation
- ➡ ມີຮຸ້ນຮັບ ມີຮຸ້ນຮັບ ມີຮຸ້ນຮັບ
Northern Coalition Corporation
- ➡ ມີຮຸ້ນຮັບ ມີຮຸ້ນຮັບ ມີຮຸ້ນຮັບ ມີຮຸ້ນຮັບ
ການປ່າໄມ້ ແລະ ການປ່າໄມ້ ມີຮຸ້ນຮັບ
Nunavut Fisheries and Marine Training Consortium
- ➡ ມີຮຸ້ນຮັບ ມີຮຸ້ນຮັບ ມີຮຸ້ນຮັບ
Nunavut Offshore Allocation Holders Association

ᑖᑭᑭᑦᑕᑦᑕᑦ ᑕᑦᑕᑦᑕᑦ ᑖᑦᑕᑦᑕᑦᑕᑦ ᑖᑦᑕᑦᑕᑦᑕᑦ ᑖᑦᑕᑦᑕᑦᑕᑦ

QC Reinvestment in Nunavut



ᑖᑕᑦᑕᑦᑕᑦ ᑖᑦᑕᑦᑕᑦᑕᑦ ᑕᑦᑕᑦᑕᑦᑕᑦ ᑖᑦᑕᑦᑕᑦᑕᑦ ᑖᑦᑕᑦᑕᑦᑕᑦ ᑖᑦᑕᑦᑕᑦᑕᑦ ᑖᑦᑕᑦᑕᑦᑕᑦ ᑖᑦᑕᑦᑕᑦᑕᑦ ᑖᑦᑕᑦᑕᑦᑕᑦ.

QC Group of Companies invests millions into growing Nunavut's economy.

ᑖᑕᑦᑕᑦᑕᑦ ᑕᑦᑕᑦᑕᑦᑕᑦ 5 ᑕᑦᑕᑦᑕᑦᑕᑦ ᑕᑦᑕᑦᑕᑦᑕᑦ ᑖᑦᑕᑦᑕᑦᑕᑦ ᑖᑦᑕᑦᑕᑦᑕᑦ ᑖᑦᑕᑦᑕᑦᑕᑦ ᑖᑦᑕᑦᑕᑦᑕᑦ ᑖᑦᑕᑦᑕᑦᑕᑦ ᑖᑦᑕᑦᑕᑦᑕᑦ \$44 ᑖᑦᑕᑦᑕᑦ.

QC has developed a 5-year inshore fishery development that will see leveraged investments in excess of \$44 million.

ᑖᑕᑦᑕᑦᑕᑦ ᑕᑦᑕᑦᑕᑦᑕᑦ ᑖᑦᑕᑦᑕᑦᑕᑦ ᑖᑦᑕᑦᑕᑦᑕᑦ ᑖᑦᑕᑦᑕᑦᑕᑦ ᑖᑦᑕᑦᑕᑦᑕᑦ ᑖᑦᑕᑦᑕᑦᑕᑦ ᑖᑦᑕᑦᑕᑦᑕᑦ ᑖᑦᑕᑦᑕᑦᑕᑦ ᑖᑦᑕᑦᑕᑦᑕᑦ.

QC is spearheading many projects, and economic and career development initiatives for the Qikiqtani Region and Nunavut .



ᐃᖃᐅᐃᑦ ᐃᓂᐃᑦ ᓂᓇᖃᐅᐅᓂᓂ ᐃᓂᐅᐅᓂᖃᑦ

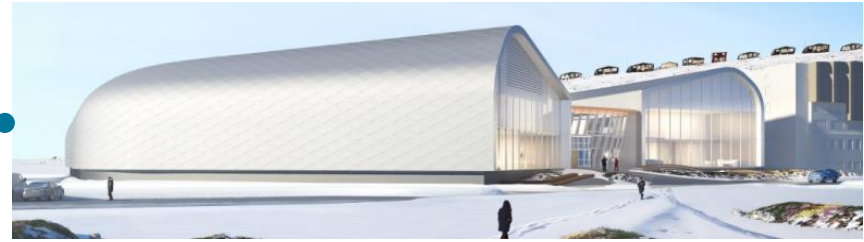
Iqaluit IOL Development

\$300-\$400 ᐅᓂᐅᓂᖃᑦ ᐅᐅᓂᖃᑦ ᐅᐅᓂᖃᑦ ᐅᐅᓂᖃᑦ ᐅᐅᓂᖃᑦ ᐅᐅᓂᖃᑦ ᐅᐅᓂᖃᑦ ᐅᐅᓂᖃᑦ

ᐃᓂᐃᑦ ᓂᓇᖃᐅᐅᓂᓂ ᐅᐅᓂᖃᑦ ᐅᐅᓂᖃᑦ
Inuit-owned Hotel and Conference Centre



ᓂᓇᐅᓂᖃᑦ ᐃᑦᑕᖃᓂᓂᖃᑦ ᐅᐅᓂᖃᑦ
Nunavut Heritage Centre



ᐅᐅᓂᖃᑦ ᐅᐅᓂᖃᑦ ᐅᐅᓂᖃᑦ ᐅᐅᓂᖃᑦ ᐅᐅᓂᖃᑦ
Affordable home ownership opportunities



ᐃᓂᐅᓂᖃᑦ ᐅᐅᓂᖃᑦ
Incubator Mall

ᐃᓂᐅᓂᖃᑦ ᐅᐅᓂᖃᑦ ᐅᐅᓂᖃᑦ
Elders Care Facility



\$300-\$400 million investment to progress economic and program delivery potential of the land

Δᓃᓆᓂ ᐃᓚᓚᓂᓐ ᓂᐱᓚᓂᓐ ᓂᐱᓚᓂᓐ

Hotel and Conference Centre

- ΔᓂΔᓚ ᓇᓚᓚᓂᓐ ᓄᓂᓂᓐ ᐱᓚᓚᓂᓐ
- Δᓃᓚᓚᓂᓐ ᐱᓚᓚ ᐃᓚᓚᓂᓐ ᓂᓚᓚᓂᓐ
- Δᓃᓂᓂᓚᓂᓐ ᐃᓚᓂᓂᓚᓂᓐ ᐃᓚᓂᓂᓚᓂᓐ
- ᐱᓚᓚᓂᓂᓚᓂᓐ ᓂᓚᓚ ᓄᓂᓂᓐ ᓂᓚᓚᓂᓐ
- ᐱᓚᓚᓚᓂᓂᓚᓂᓐ 2018-ᓚ
- \$55 ᓚᓂᓚ ᓂᓚᓚᓂᓐ ᓚᓂᓚᓂᓐ ᓂᓚᓚᓂᓐ

- Inuit-ownership structure
- Construction and hospitality careers
- Advanced energy systems
- Breaking ground in 2018
- \$55 million investment



ᐱᕈᖅᓴᐱᓄᓴᕐᕆᕋᕆᕐᕋᕐᕆ ᐅᓴᓴᕐᓄᕐᕋᕆᕆᕐᕋᕆ | Clean Energy Projects



ᐱᕈᖅᓴᐱᓄᓴᕐᕆᕋᕆᕐᕋᕐᕆ ᐅᓴᓴᕐᓄᕐᕋᕆᕆᕐᕋᕆ
Wind energy studies



ᓄᓄᒻᕐ
ᐅᓴᓴᕐᓄᕐᕋᕆᕆᕐᕋᕆ
ᕐᕋᕆᕆᕆᕆᕆᕆᕆᕆ
ᕆᕆᕆᕆᕆᕆᕆᕆᕆ

Net-zero energy
ready hotel and
conference
centre

ᓴᓄᓄᓴᕐᕆᕆᕆᕆᕆᕆᕆᕆᕆᕆ ᐱᕈᖅᓴᐱᓄᓴᕐᕆᕋᕆᕐᕋᕐᕆ ᐅᓴᓴᕐᓄᕐᕋᕆᕆᕆᕆᕆᕆᕆᕆᕆᕆᕆ
ᐱᕈᕆᕆᕆᕆᕆᕆᕆᕆᕆᕆ ᐱᕈᕆᕆᕆᕆᕆᕆᕆᕆᕆ ᐱᕈᕆᕆᕆᕆᕆᕆᕆᕆᕆᕆᕆᕆᕆᕆᕆᕆ

21st Century Energy Infrastructure to service
Inuit Owned Land in Iqaluit



ᕆᕆᕆᕆᕆ ᓄᓄᒻᕐ
ᐅᓴᓴᕐᓄᕐᕋᕆᕆᕆᕆᕆᕆᕆᕆᕆᕆᕆ
ᐱᕈᕆᕆᕆᕆᕆᕆᕆᕆᕆᕆᕆᕆᕆᕆᕆᕆ

Marine
renewable
energy
resource study



ᓄᓇᓁᓕᓐ ᐃᓕᓕᓕᓕᓕᓕᓐ ᓄᓕᓕᓕᓕᓐ ᓄᓕᓕᓕᓕᓐ ᓄᓕᓕᓕᓕᓐ ᓄᓕᓕᓕᓕᓐ

ᓄᓕᓕᓕᓕᓐ

NWMB Allocation Guidelines

• ᓄᓕᓕᓕᓕᓐ ᓄᓕᓕᓕᓐ ᓄᓕᓕᓕᓐ (30-ᓕᓕᓐ)

- ᓄᓕᓕᓕᓐ, ᓄᓕᓕᓕᓐ ᓄᓕᓕᓕᓐ ᓄᓕᓕᓕᓐ ᓄᓕᓕᓕᓐ ᓄᓕᓕᓕᓐ
- ᓄᓕᓕᓕᓐ ᓄᓕᓕᓕᓐ ᓄᓕᓕᓕᓐ ᓄᓕᓕᓕᓐ ᓄᓕᓕᓕᓐ
- ᓄᓕᓕᓕᓐ ᓄᓕᓕᓕᓐ ᓄᓕᓕᓕᓐ

• ᓄᓕᓕᓐ ᓄᓕᓕᓐ (40-ᓕᓕᓐ)

- ᓄᓕᓕᓐ ᓄᓕᓕᓐ ᓄᓕᓕᓐ ᓄᓕᓕᓐ ᓄᓕᓕᓐ ᓄᓕᓕᓐ ᓄᓕᓕᓐ ᓄᓕᓕᓐ ᓄᓕᓕᓐ
- ᓄᓕᓕᓐ ᓄᓕᓕᓐ ᓄᓕᓕᓐ ᓄᓕᓕᓐ ᓄᓕᓕᓐ ᓄᓕᓕᓐ ᓄᓕᓕᓐ
- ᓄᓕᓕᓐ ᓄᓕᓕᓐ ᓄᓕᓕᓐ ᓄᓕᓕᓐ ᓄᓕᓕᓐ ᓄᓕᓕᓐ ᓄᓕᓕᓐ
- ᓄᓕᓕᓐ ᓄᓕᓕᓐ ᓄᓕᓕᓐ ᓄᓕᓕᓐ ᓄᓕᓕᓐ ᓄᓕᓕᓐ

• ᓄᓕᓕᓐ ᓄᓕᓕᓐ (30-ᓕᓕᓐ)

- ᓄᓕᓕᓐ ᓄᓕᓕᓐ ᓄᓕᓕᓐ ᓄᓕᓕᓐ ᓄᓕᓕᓐ ᓄᓕᓕᓐ ᓄᓕᓕᓐ
- ᓄᓕᓕᓐ ᓄᓕᓕᓐ ᓄᓕᓕᓐ ᓄᓕᓕᓐ ᓄᓕᓕᓐ ᓄᓕᓕᓐ ᓄᓕᓕᓐ
- ᓄᓕᓕᓐ ᓄᓕᓕᓐ ᓄᓕᓕᓐ ᓄᓕᓕᓐ ᓄᓕᓕᓐ ᓄᓕᓕᓐ ᓄᓕᓕᓐ

• Governance and Business Capacity (30 points)

- Open, transparent and accountable operations;
- Viable commercial venture; and
- Positive history in the fishery

• Inuit Involvement (40 points)

- RWO/HTO/Nunavut Community ownership/sponsorship of the economic enterprise;
- Inuit ownership of the economic enterprise;
- Adjacency of the community to the fishery area; and
- Economic dependence of the community on the resource;

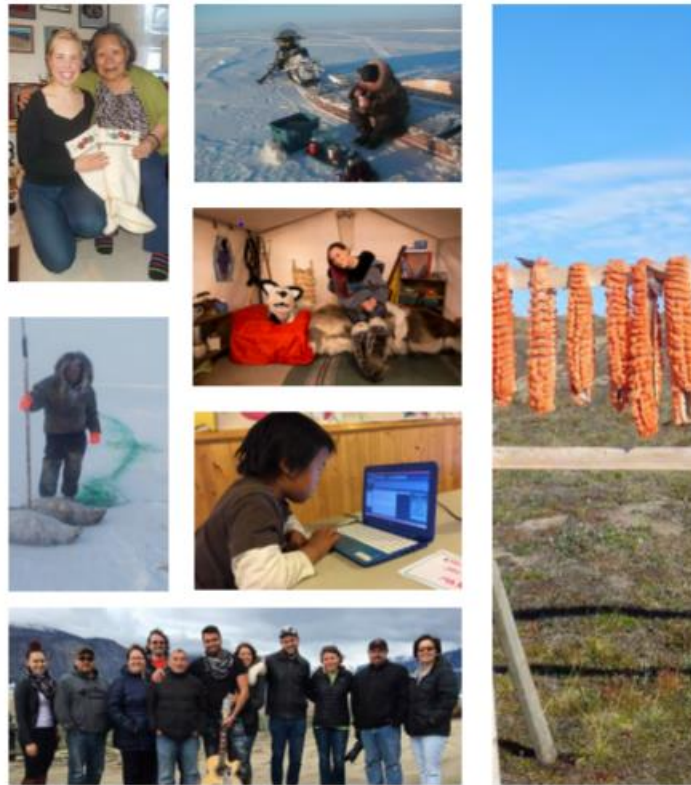
• Benefits to Nunavummiut (30 points)

- Employment of Nunavummiut, especially Inuit
- Ownership of the economic enterprise and/or the vessel(s) by one or more residents of Nunavut; and
- The provision of direct benefits to Nunavut

ᐃᓂᓄᐅᐅ ᓂᓄᓕᓕᓂᓂᓄᐅᐅ ᓂᓄᓂᓂᓄᐅᐅ ᓂᓄᓂᓂᓄᐅᐅ QIA Programs

- ᐃᓂᓄᐅᐅ ᓂᓄᓂᓂᓄᐅᐅ ᓂᓄᓂᓂᓄᐅᐅ: **\$1.84 ᓂᓄᓂᓂᓄᐅᐅ**
- ᓂᓄᓂᓂᓄᐅᐅ ᐃᓂᓄᐅᐅ ᓂᓄᓂᓂᓄᐅᐅ ᓂᓄᓂᓂᓄᐅᐅ ᓂᓄᓂᓂᓄᐅᐅ ᓂᓄᓂᓂᓄᐅᐅ ᓂᓄᓂᓂᓄᐅᐅ:
 - ᓂᓄᓂᓂᓄᐅᐅ ᓂᓄᓂᓂᓄᐅᐅ ᓂᓄᓂᓂᓄᐅᐅ
 - ᓂᓄᓂᓂᓄᐅᐅ ᓂᓄᓂᓂᓄᐅᐅ ᓂᓄᓂᓂᓄᐅᐅ
 - ᓂᓄᓂᓂᓄᐅᐅ ᓂᓄᓂᓂᓄᐅᐅ
 - ᐃᓂᓄᐅᐅ ᓂᓄᓂᓂᓄᐅᐅ

- QC 2017 Dividends: **\$1.84 M**
- Dividends go to QIA **Legacy Fund** to support:
 - Cultural Activities Programs
 - Daycare and Early Childhood Learning Programs
 - I pi ti ki Program
 - Scholarship Programs
 - Qikiqtani Truth Commission

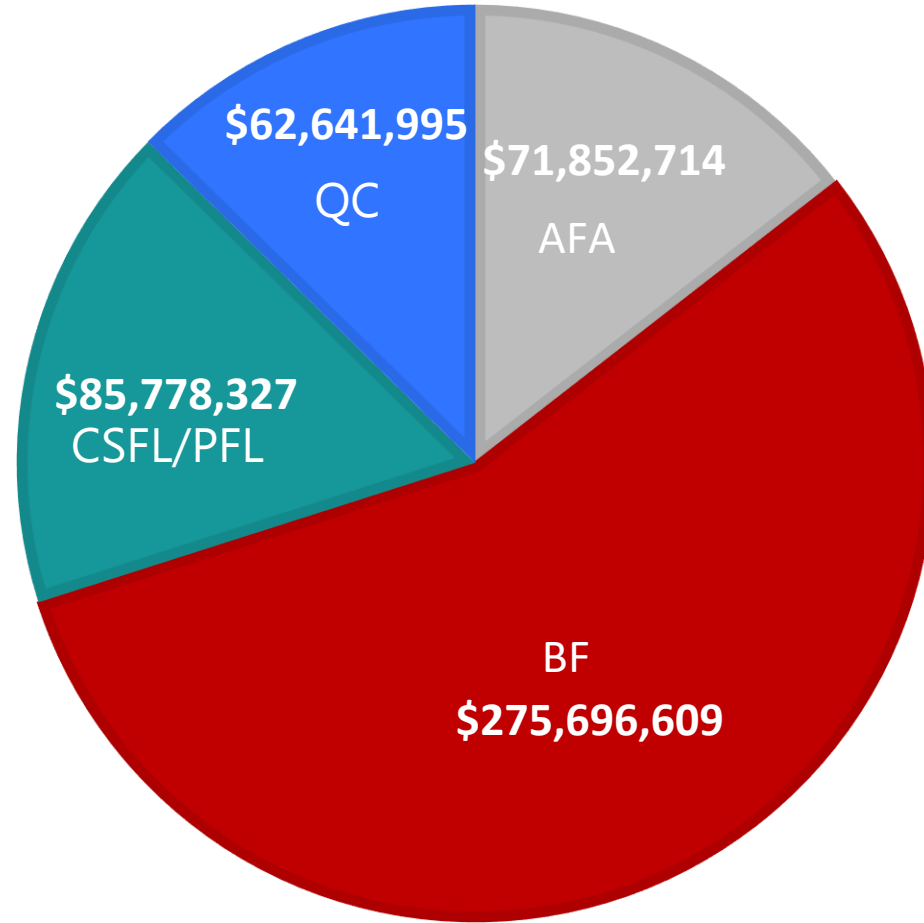


ᑕᐃᑭᑦ ᑎᑕᑦᑖᑦ 5-ᑖᑦᑖᑦ ᑦᑕᑦᑖᑦ ᐃᑦᑖᑦᑕᑦᑕᑦᑕᑦ*

Licence Holders' 5-year Revenue*

ᑕᑦᑕᑦᑕᑦ ᑕᑦᑕᑦᑕᑦᑕᑦ ᑕᑦᑕᑦ
 ᑕᑦᑕᑦᑕᑦ ᑕᑦᑕᑦᑕᑦ ᑕᑦᑕᑦᑕᑦ
 ᑎᑕᑦᑕᑦ ᑕᑦᑕᑦᑕᑦ ᑕᑦᑕᑦ
 ᑕᑦᑕᑦᑕᑦᑕᑦᑕᑦᑕᑦᑕᑦᑕᑦᑕᑦ
 ᑕᑦᑕᑦᑕᑦ ᑕᑦᑕᑦᑕᑦᑕᑦ

ᑕᑦᑕᑦ ᑕᑦᑕᑦᑕᑦᑕᑦᑕᑦᑕᑦ
 ᑕᑦᑕᑦᑕᑦ ᑕᑦᑕᑦᑕᑦᑕᑦᑕᑦ
 ᑕᑦᑕᑦᑕᑦᑕᑦᑕᑦᑕᑦᑕᑦᑕᑦ
 ᑕᑦᑕᑦᑕᑦᑕᑦᑕᑦᑕᑦᑕᑦ



The spirit of the Access and Allocations Policy was to support strong and viable Nunavut companies.

The current unequitable division of Nunavut's allocations places QC in a non-competitive position.

*ᐃᑦᑕᑦᑕᑦ ᑕᑦᑕᑦᑕᑦ ᑕᑦᑕᑦᑕᑦᑕᑦ
 100% ᑕᑦᑕᑦᑕᑦ ᑕᑦᑕᑦᑕᑦ 45% ᑕᑦᑕᑦᑕᑦ
 ᑕᑦᑕᑦᑕᑦᑕᑦᑕᑦ ᑕᑦᑕᑦᑕᑦᑕᑦᑕᑦ
 ᑕᑦᑕᑦᑕᑦᑕᑦᑕᑦ ᑕᑦᑕᑦᑕᑦᑕᑦᑕᑦ
 ᑕᑦᑕᑦᑕᑦᑕᑦᑕᑦᑕᑦᑕᑦ

*Revenue estimates assume 100% of turbot and 45% of shrimp allocations harvested annually at an assumed market price



ᐃᓄᓄᓄᓄᓄ!

ᐃᓄᓄ ᓄᓄᓄᓄᓄ,

ᐃᓄᓄᓄᓄᓄᓄᓄ ᓄᓄᓄᓄ ᓄᓄᓄᓄᓄᓄᓄᓄᓄᓄᓄᓄᓄ
ᓄᓄᓄᓄᓄᓄᓄ ᓄᓄᓄᓄ ᓄᓄᓄᓄᓄᓄᓄᓄᓄᓄᓄᓄᓄᓄ

Thank you!

Harry Flaherty

President & CEO

QIKIQTAALUK CORPORATION & GROUP OF
COMPANIES



ᓄᓄᓄᓄᓄᓄᓄᓄ ᓄᓄᓄᓄᓄᓄᓄᓄ

ᓄᓄᓄᓄᓄᓄᓄᓄᓄᓄᓄ

QIKIQTAALUK CORPORATION

& Group of Companies