

የዎሎግራፊ

ፋይናንስያል ሪፖርት ማዘጋጀት i

ግብርና የግብር ማረጋገጫ ii

የዎሎግራፊ iii

1.0 ግብርና የግብር ማረጋገጫ ለሚያስፈልግበት ግብር 4

2.0 ግብርና የግብር ማረጋገጫ ለሚያስፈልግበት ግብር 4

2.1 ግብርና የግብር ማረጋገጫ ለሚያስፈልግበት ግብር 4

3.0 ግብርና የግብር ማረጋገጫ ለሚያስፈልግበት ግብር 5

 3.1 ግብርና የግብር ማረጋገጫ ለሚያስፈልግበት ግብር 5

 3.2 የግብርና የግብር ማረጋገጫ ለሚያስፈልግበት ግብር 6

 3.3 ግብርና የግብር ማረጋገጫ ለሚያስፈልግበት ግብር 7

 3.4 ግብርና የግብር ማረጋገጫ ለሚያስፈልግበት ግብር 8

 3.5 ግብርና የግብር ማረጋገጫ ለሚያስፈልግበት ግብር 9

 3.6 ግብርና የግብር ማረጋገጫ ለሚያስፈልግበት ግብር 10

 3.7 ግብርና የግብር ማረጋገጫ ለሚያስፈልግበት ግብር 12

 3.8 ግብርና የግብር ማረጋገጫ ለሚያስፈልግበት ግብር 13

 3.9 ግብርና የግብር ማረጋገጫ ለሚያስፈልግበት ግብር 14

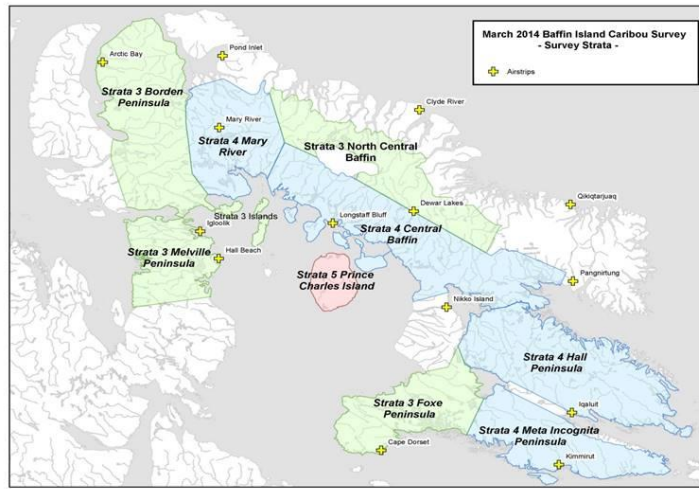
4.0 ግብርና የግብር ማረጋገጫ ለሚያስፈልግበት ግብር 15

5.0 ግብርና የግብር ማረጋገጫ ለሚያስፈልግበት ግብር 16

የፊት ለጊዜ ተጠቃሚ የሆኑትን ግብይት ማግኘት ይቻላል

1) ጠቅላይ ልማት ለግብይት ማግኘት የሚያስፈልጉትን ግብይት ማግኘት

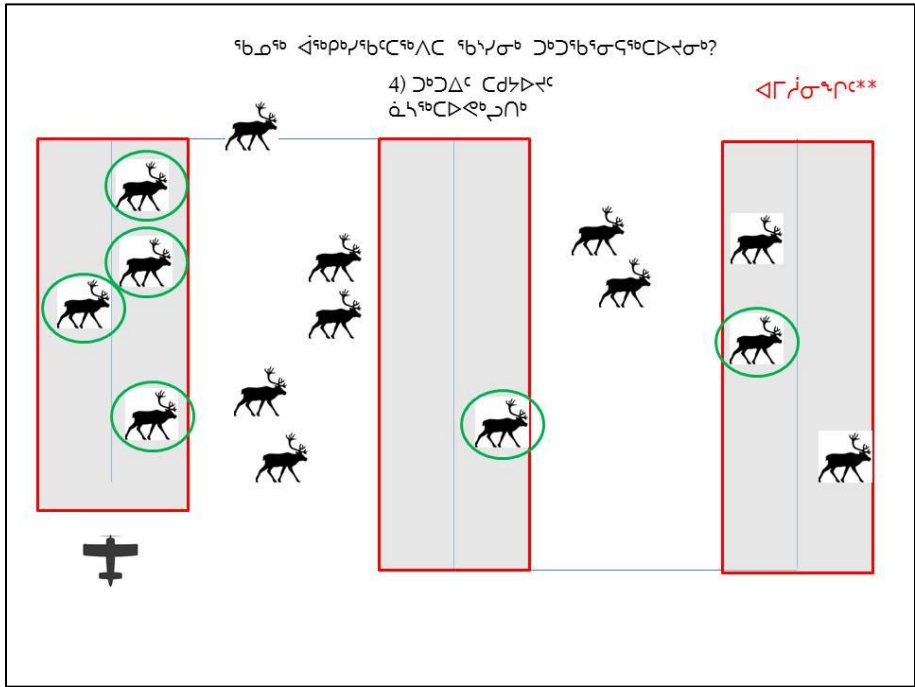
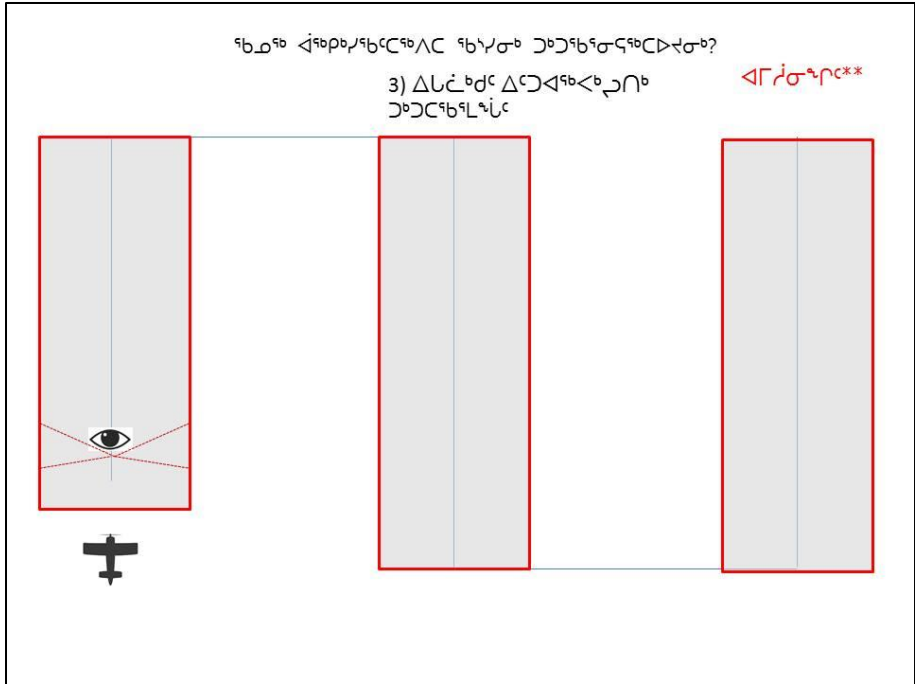
- +
- ?
- =
- \$\$
- +
- ⌚

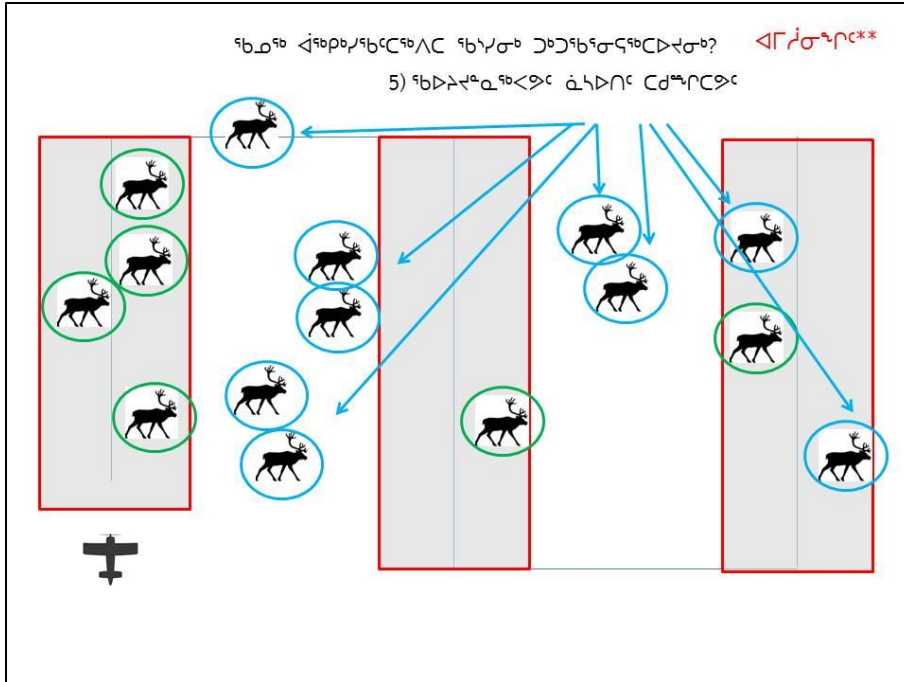


የፊት ለጊዜ ተጠቃሚ የሆኑትን ግብይት ማግኘት ይቻላል

2) ጠቅላይ ልማት ለግብይት ማግኘት የሚያስፈልጉትን ግብይት ማግኘት



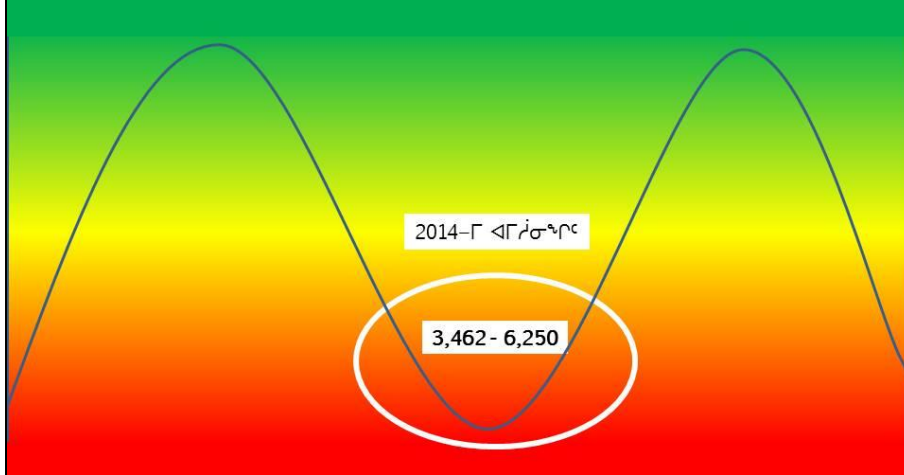




2014-፲ የጠቅላላው ስርዓት ለማውጣት ለምን ዓይነት ስርዓት ማውጣት ይገባል? ለምሳሌ**

Subpopulation	Individuals Observed	We are 95% certain the actual number of Caribou lay between these two values
North Baffin		
Borden Peninsula	1	1 -30
Mary River	49	96 - 521
North Central Baffin	13	31 - 230
Total	63	159 - 622
South Baffin		
Central Baffin	197	662 - 1,798
Foxe Peninsula	20	48 - 972
Hall Peninsula	176	467 - 1,686
ፖሊናር ኮሎን	91	256 - 1,138
Prince Charles Island	557	1,158 - 2,220
Total	824	3,169 - 5,935
Total (-Prince Charles Island)	267	1,777 - 4,207
Other areas		
Melville Peninsula	26	88 - 551
Baffin Island + Melville P.	1,130	3,661 - 6,484
Baffin Island Total	1,104	3,462 - 6,250

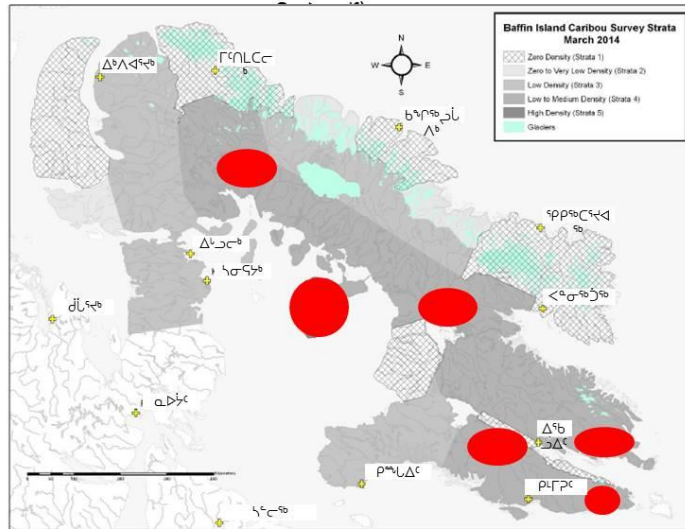
ዲፎርሜሽን?



ጋንጋል ነጠባጠብ ስርዓት ለማረጋገጥ (ልገሎች) ነጠባጠብ ስርዓት (ደንበኞች, ስርዓት), ደንበኞች, ደንበኞች ለማረጋገጥ?

ክልሉን ለማረጋገጥ**

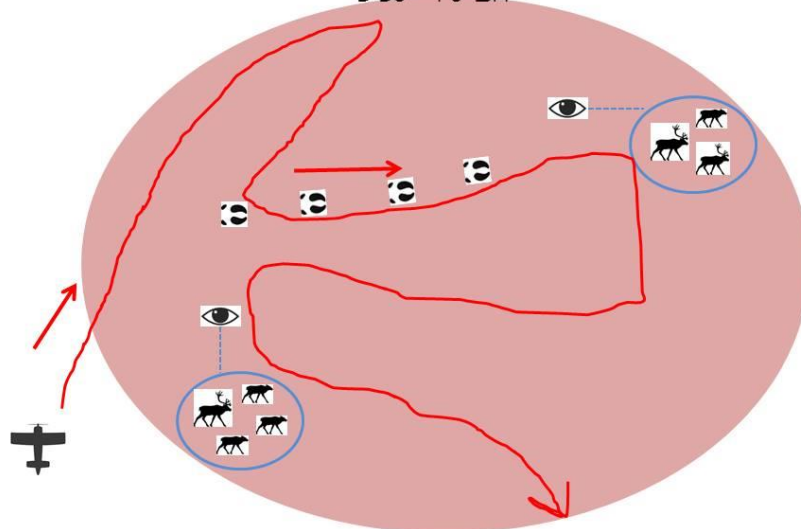
1) የጋንጋል ጋንጋል ስርዓት ለማረጋገጥ (ልገሎች)



የካህን ጉዞ (ደብዳቤ, ጉዞ), ደብዳቤ, ደብዳቤ ለምሳሌ?

የክፍለ-ደብዳቤ**

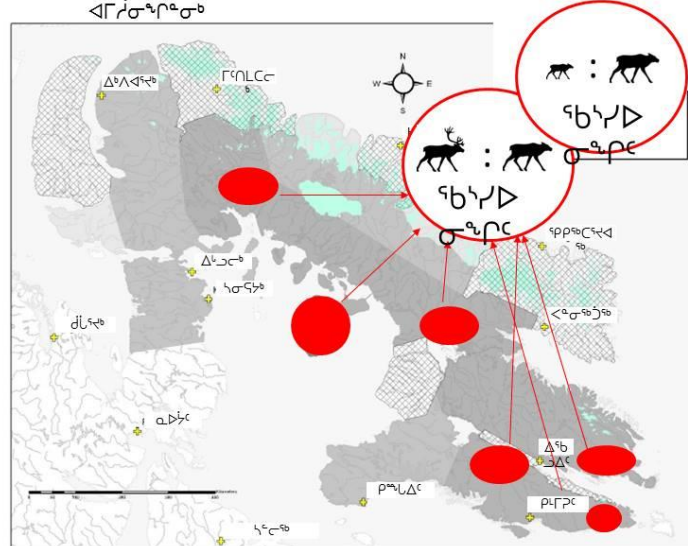
2) ለምሳሌ የክፍለ-ደብዳቤ ጉዞዎች ለምሳሌ ደብዳቤ ጉዞዎች



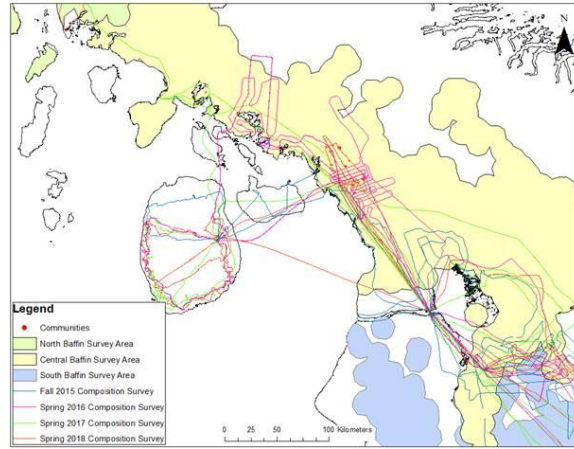
የካህን ጉዞ (ደብዳቤ, ጉዞ), ደብዳቤ, ደብዳቤ ለምሳሌ?

የክፍለ-ደብዳቤ**

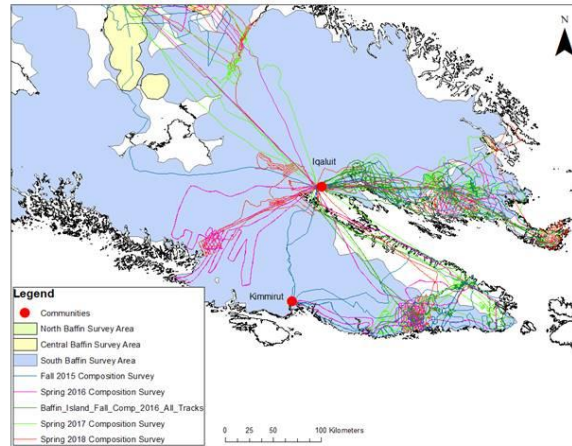
3) የካህን ጉዞ ለምሳሌ ደብዳቤዎች ለምሳሌ ለምሳሌ ለምሳሌ ለምሳሌ



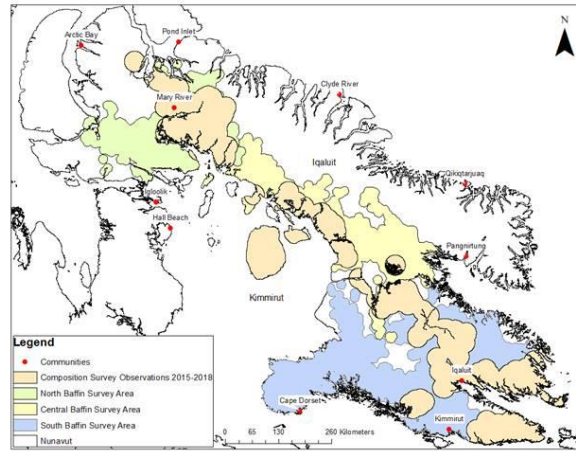
ᖃᓄᓂᓕᓄᓂᓄᓂ ᖃᓄᓂᓕᓄᓂ ᖃᓄᓂᓕᓄᓂ ᖃᓄᓂᓕᓄᓂ



ᖃᓄᓂᓕᓄᓂᓄᓂ ᖃᓄᓂᓕᓄᓂ ᖃᓄᓂᓕᓄᓂ ᖃᓄᓂᓕᓄᓂ

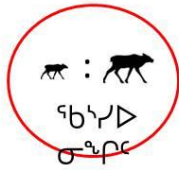


ኅይወተሥራር ልምድ ልምድ 2015-2018



ደቡብ ሰላሳ ሰላሳ ስምንት

ኅይወተሥራር ልምድ ልምድ ጥናት ልምድ



- ለጥናት ልምድ ልምድ
ኅይወተሥራር ልምድ ልምድ ልምድ
ፈጣሪ ልምድ ልምድ ልምድ
- 70-90 ልምድ ልምድ
 - 50-70 ልምድ ልምድ
 - 30-50 ልምድ ልምድ

- 40 ልምድ ልምድ
ፈጣሪ ልምድ ልምድ ልምድ
ፈጣሪ ልምድ ልምድ ልምድ
ኅይወተሥራር ልምድ ልምድ
ጥናት ልምድ ልምድ
ጥናት ልምድ ልምድ (ጋለ 2001).

ጥናት ልምድ ልምድ ልምድ

የኮንትሮሎች የድንበይ-የድንበይ ለየደንበይ
የድንበይ-የድንበይ - የጥገና

ጥገና

Table 4 Number of observed caribou by demographic group during Baffin Island composition surveys 2015-2018.

Year/Season	2015				2016				2017				2018				
	Fall				Spring				Fall				Spring				
Location	North Baffin Island	Central Baffin Island	Prince Charles Island	South Baffin Island	North Baffin Island	Central Baffin Island	Prince Charles Island	South Baffin Island	North Baffin Island	Central Baffin Island	Prince Charles Island	South Baffin Island	North Baffin Island	Central Baffin Island	Prince Charles Island	South Baffin Island	
Calves Observed	55	28	133	49	23	82	49	54	81	47	1	114	92	86	21	18	31
Cows Observed	77	39	189	64	67	328	222	94	196	120	1	351	249	139	36	33	161
Calves/100 Cows	71	72	70	77	34	25	22	57	41	39	100	32	37	62	58	55	19
Yearlings Observed	N/A	N/A	N/A	N/A	10	76	29	N/A	42	23	0	57	75	17	5	7	37
Bulls Observed	76	29	126	46	25	204	151	54	126	64	6	133	181	74	38	40	73
Bulls/100 Cows	99	74	67	72	37	62	68	57	64	53	600	38	73	53	106	121	45
Bull + Cows	153	68	315	110	92	532	373	148	322	184	7	484	430	213	74	73	234
Adults + Yearlings Observed	153	68	315	110	Not completed	102	608	402	364	207	7	541	505	230	79	80	271
Total Observed (Calves, Yearlings and Adults)	208	96	448	159	125	690	451	202	445	254	8	655	597	316	100	98	302



40 ብሔራዊ : 100 ብሔራዊ ? ብሔራዊ : 100 ብሔራዊ ? ብሔራዊ : 100 ብሔራዊ

2015-17 በረከብ-ድንበይ ለብሔራዊ ለሚከተሉት ለብሔራዊ መለኪያዎች

የኮንትሮሎች የድንበይ-የድንበይ ለየደንበይ
የድንበይ-የድንበይ - የጥገና

ጥገና

Table 4 Number of observed caribou by demographic group during Baffin Island composition surveys 2015-2018.

Year/Season	2015				2016				2017				2018				
	Fall				Spring				Fall				Spring				
Location	North Baffin Island	Central Baffin Island	Prince Charles Island	South Baffin Island	North Baffin Island	Central Baffin Island	Prince Charles Island	South Baffin Island	North Baffin Island	Central Baffin Island	Prince Charles Island	South Baffin Island	North Baffin Island	Central Baffin Island	Prince Charles Island	South Baffin Island	
Calves Observed	55	28	133	49	23	82	49	54	81	47	1	114	92	86	21	18	31
Cows Observed	77	39	189	64	67	328	222	94	196	120	1	351	249	139	36	33	161
Calves/100 Cows	71	72	70	77	34	25	22	57	41	39	100	32	37	62	58	55	19
Yearlings Observed	N/A	N/A	N/A	N/A	10	76	29	N/A	42	23	0	57	75	17	5	7	37
Bulls Observed	76	29	126	46	25	204	151	54	126	64	6	133	181	74	38	40	73
Bulls/100 Cows	99	74	67	72	37	62	68	57	64	53	600	38	73	53	106	121	45
Bull + Cows	153	68	315	110	92	532	373	148	322	184	7	484	430	213	74	73	234
Adults + Yearlings Observed	153	68	315	110	Not completed	102	608	402	364	207	7	541	505	230	79	80	271
Total Observed (Calves, Yearlings and Adults)	208	96	448	159	125	690	451	202	445	254	8	655	597	316	100	98	302



30-10 50-15 ለብሔራዊ : 100 ብሔራዊ 30-10 50-15 ለብሔራዊ : 100 ብሔራዊ 30-10 50-15 ለብሔራዊ : 100 ብሔራዊ

በረከብ-ድንበይ መጥፋት ለመጠቃለል ይጠቀሱ የሚያስፈልግ ነው

የኑንጅት ድርጅት የኔግቲቭ ልዩ ልዩ ልዩ ጥናት
የኔግቲቭ ድርጅት - ጽሑፍ

ጥናት

Table 4 Number of observed caribou by demographic group during Baffin Island composition surveys 2015-2018.

Year Season	2015				2016				2017				2018					
	Fall		Spring		Fall		Spring		Fall		Spring		Fall		Spring			
Location	North Baffin Island	Central Baffin Island	Prince Charles Island	South Baffin Island	North Baffin Island	Central Baffin Island	Prince Charles Island	South Baffin Island	North Baffin Island	Central Baffin Island	Prince Charles Island	South Baffin Island	North Baffin Island	Central Baffin Island	Prince Charles Island	South Baffin Island		
Calves Observed	55	28	133	49	23	82	49	54	81	47	1	114	92	86	21	18	31	155
Cows Observed	77	39	189	64	67	328	222	94	196	120	1	351	249	139	36	33	161	401
Calves/100 Cows	71	72	70	77	34	25	22	57	41	39	100	32	37	62	58	55	19	39
Yearlings Observed	N/A	N/A	N/A	N/A	10	76	29	N/A	42	23	0	57	75	17	5	7	37	100
Bulls Observed	76	29	126	46	25	204	151	54	126	64	6	133	181	74	38	40	73	277
Bulls/100 Cows	99	74	67	72	37	62	68	57	64	53	600	38	73	53	108	121	45	69
Bull + Cows	153	68	315	110	92	532	373	148	322	184	7	484	430	213	74	73	234	678
Adults + Yearlings Observed	153	68	315	110	102	608	402	148	364	207	7	541	505	230	79	80	271	778
Total Observed (Calves, Yearlings and Adults)	208	96	448	159	125	690	451	202	445	254	8	655	597	316	100	98	302	933



40 ቆይታ : 100 ቆይታ

100 ቆይታ : 100 ቆይታ

100 ቆይታ : 100 ቆይታ

2015-18 በክፍለ-ክፍል ቆይታ ለድህረ-ገጽ ለድህረ-ገጽ ለድህረ-ገጽ ለድህረ-ገጽ

የኑንጅት ድርጅት የኔግቲቭ ልዩ ልዩ ልዩ ጥናት
የኔግቲቭ ድርጅት - ጽሑፍ

ጥናት

Table 4 Number of observed caribou by demographic group during Baffin Island composition surveys 2015-2018.

Year Season	2015				2016				2017				2018					
	Fall		Spring		Fall		Spring		Fall		Spring		Fall		Spring			
Location	North Baffin Island	Central Baffin Island	Prince Charles Island	South Baffin Island	North Baffin Island	Central Baffin Island	Prince Charles Island	South Baffin Island	North Baffin Island	Central Baffin Island	Prince Charles Island	South Baffin Island	North Baffin Island	Central Baffin Island	Prince Charles Island	South Baffin Island		
Calves Observed	55	28	133	49	23	82	49	54	81	47	1	114	92	86	21	18	31	155
Cows Observed	77	39	189	64	67	328	222	94	196	120	1	351	249	139	36	33	161	401
Calves/100 Cows	71	72	70	77	34	25	22	57	41	39	100	32	37	62	58	55	19	39
Yearlings Observed	N/A	N/A	N/A	N/A	10	76	29	N/A	42	23	0	57	75	17	5	7	37	100
Bulls Observed	76	29	126	46	25	204	151	54	126	64	6	133	181	74	38	40	73	277
Bulls/100 Cows	99	74	67	72	37	62	68	57	64	53	600	38	73	53	108	121	45	69
Bull + Cows	153	68	315	110	92	532	373	148	322	184	7	484	430	213	74	73	234	678
Adults + Yearlings Observed	153	68	315	110	102	608	402	148	364	207	7	541	505	230	79	80	271	778
Total Observed (Calves, Yearlings and Adults)	208	96	448	159	125	690	451	202	445	254	8	655	597	316	100	98	302	933



30-75 50-75 ለድህረ-ገጽ : 100 ቆይታ

30-75 50-75 ለድህረ-ገጽ : 100 ቆይታ

30-75 50-75 ለድህረ-ገጽ : 100 ቆይታ

በክፍለ-ክፍል ለድህረ-ገጽ ለድህረ-ገጽ ለድህረ-ገጽ ለድህረ-ገጽ

ፍጹም ልማት ሚኒስቴር ፍጹም ልማት ፎንድ
2019-፲ ልማት ፎንድ

፲፱፻፲፱ ልማት ፎንድ ልማት ፎንድ ልማት ፎንድ ልማት ፎንድ
ፍጹም ልማት ፎንድ ፲፱፻፲፱ ልማት ፎንድ

ፍጹም ልማት ፎንድ ፍጹም ልማት ፎንድ ፍጹም ልማት ፎንድ

ፍጹም ልማት ፎንድ ፍጹም ልማት ፎንድ ፍጹም ልማት ፎንድ
ፍጹም ልማት ፎንድ ፍጹም ልማት ፎንድ ፍጹም ልማት ፎንድ

ፍጹም ልማት ፎንድ ፍጹም ልማት ፎንድ
ፍጹም ልማት ፎንድ

- ፍጹም ልማት ፎንድ ፍጹም ልማት ፎንድ

ፍጥረትና ፍጥረት

- ጋራ ለጋራ ለሁሉም ሕዝብ ለሕይወት ጥሩ ሆኖ ለማይቻልም.
- ለጥቅም ለሰጠው ለሰጠው ለሰጠው ሆኖ ለማይቻልም.
- ለጥቅም ለሰጠው ለሰጠው ለሰጠው ሆኖ ለማይቻልም.
- ለጥቅም ለሰጠው ለሰጠው ለሰጠው ሆኖ ለማይቻልም.
- ለጥቅም ለሰጠው ለሰጠው ለሰጠው ሆኖ ለማይቻልም.

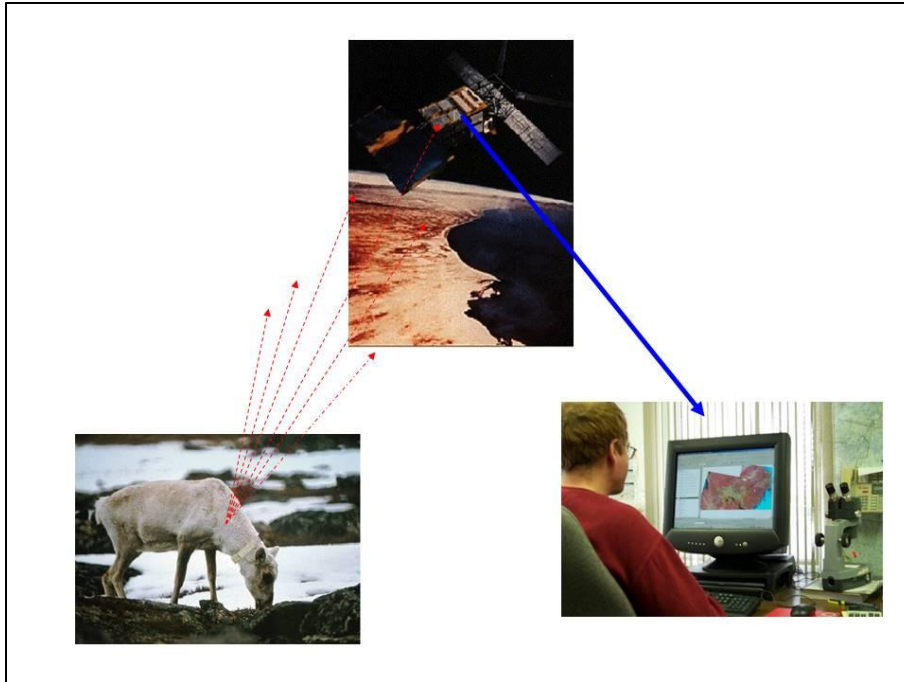
ፍጥረትና ፍጥረት ለጥቅም ለሰጠው

- ለጥቅም ለሰጠው ሆኖ ለማይቻልም.
- ለጥቅም ለሰጠው ለሰጠው ለሰጠው ሆኖ ለማይቻልም.
- ለጥቅም ለሰጠው ለሰጠው ለሰጠው ሆኖ ለማይቻልም.
- ለጥቅም ለሰጠው ለሰጠው ለሰጠው ሆኖ ለማይቻልም.
- ለጥቅም ለሰጠው ለሰጠው ለሰጠው ሆኖ ለማይቻልም.

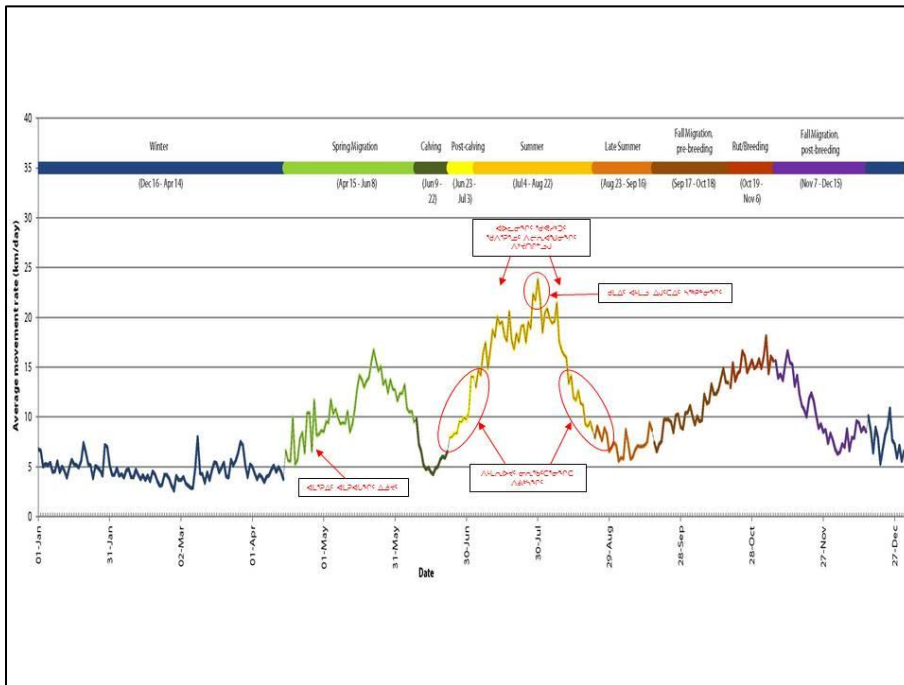
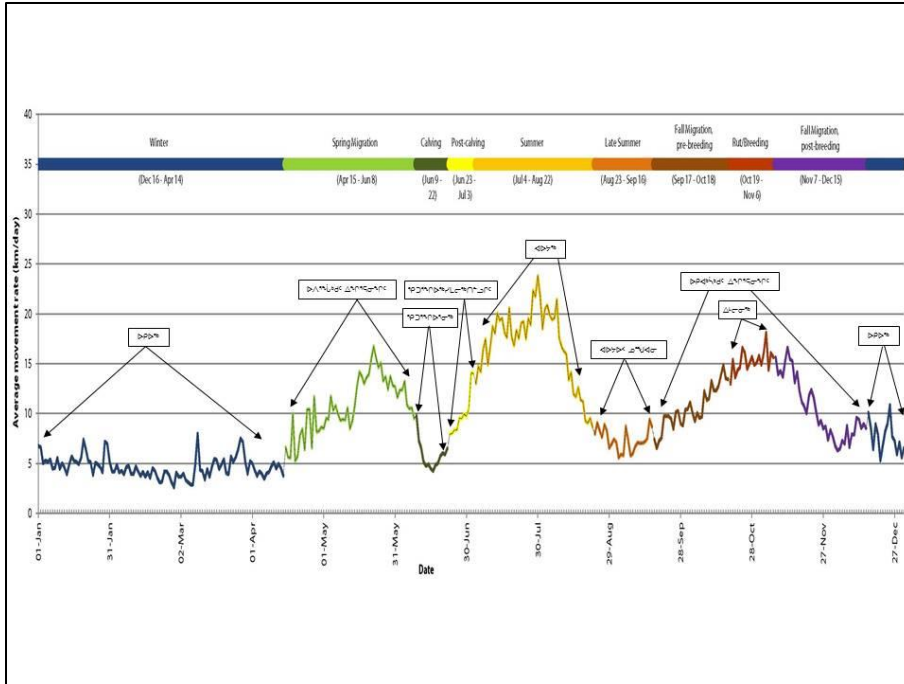
መለሮገጽ ማጠቃለያ

- ለምሳሌ ለጋራ ጥራት.
- የቴሌቪዥን ለብራክት ማጠቃለያ ማጠቃለያ ለምሳሌ ለጋራ ጥራት ለጋራ ጥራት.
- ለጋራ ጥራት ለጋራ ጥራት ለጋራ ጥራት ለጋራ ጥራት.
- ለጋራ ጥራት ለጋራ ጥራት ለጋራ ጥራት ለጋራ ጥራት.
- ለጋራ ጥራት ለጋራ ጥራት ለጋራ ጥራት ለጋራ ጥራት.
- ለጋራ ጥራት ለጋራ ጥራት ለጋራ ጥራት ለጋራ ጥራት.
- ለጋራ ጥራት ለጋራ ጥራት ለጋራ ጥራት ለጋራ ጥራት.

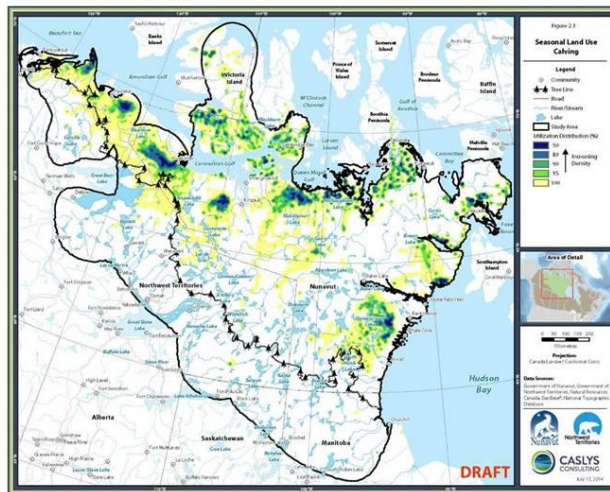




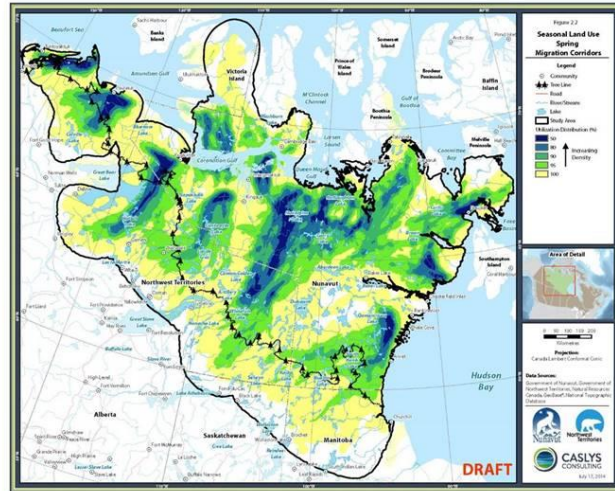
ፍጅጃ ማረጋገጫ ለግብርና



ደብዳቤ ስራ ለጥንቅቅ ገንዘብ ለውጥ

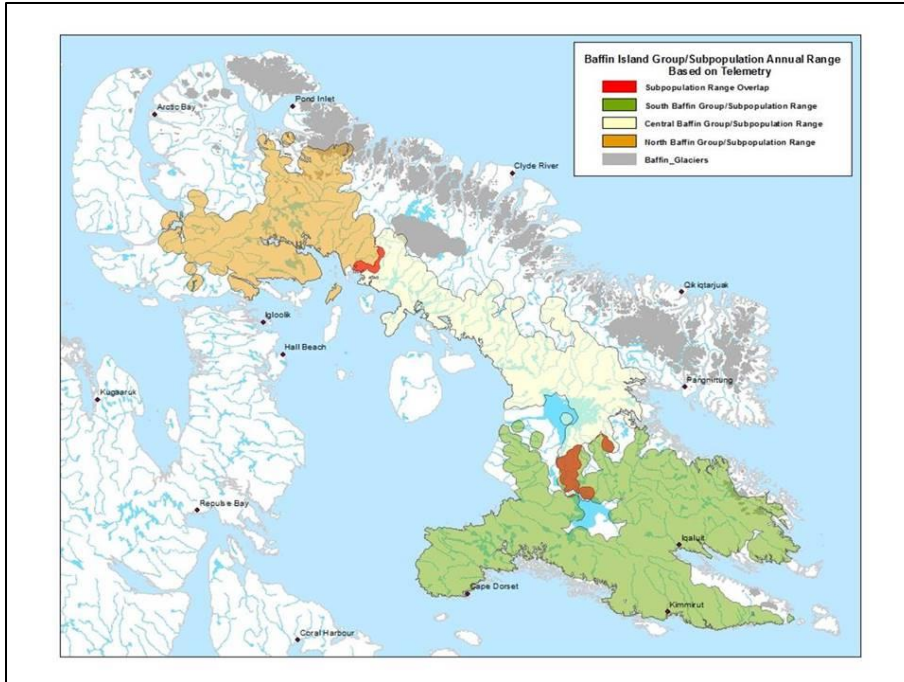


ደብዳቤ ስራ ለጥንቅቅ ለውጥ - የጥንቅቅ ስራ

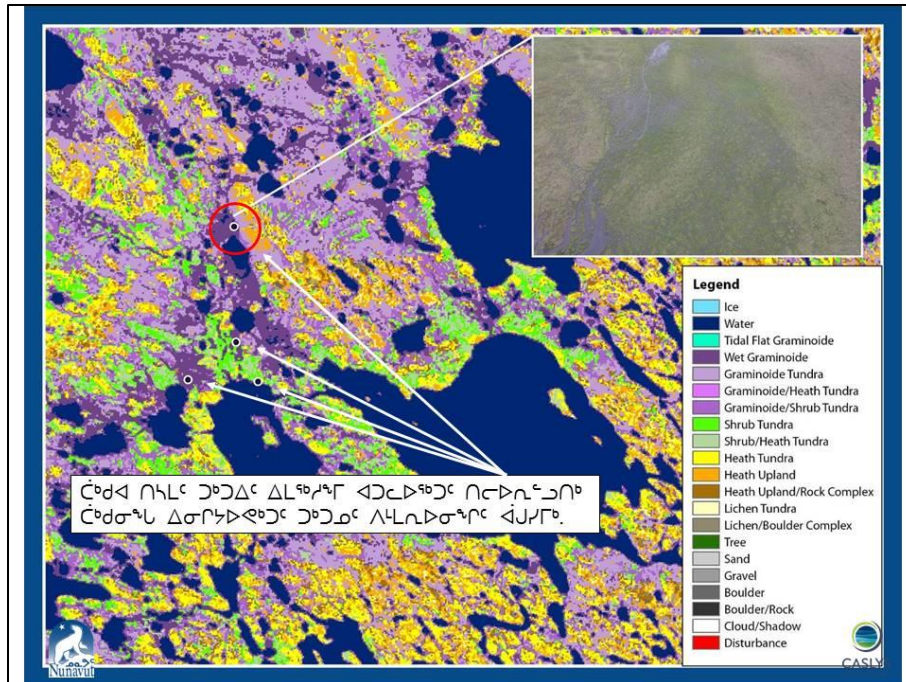


ᓄᓇᓂᓄᓐ ᐱᐅᓂᓄᓐ ᐱᓂᓂᓄᓐ ᐱᓂᓂᓄᓐ - ᐱᓂᓂᓄᓐ ᐱᓂᓂᓄᓐ

ᐅᓂᓂᓄᓐ ᐱᓂᓂᓄᓐ ᐱᓂᓂᓄᓐ ᐱᓂᓂᓄᓐ



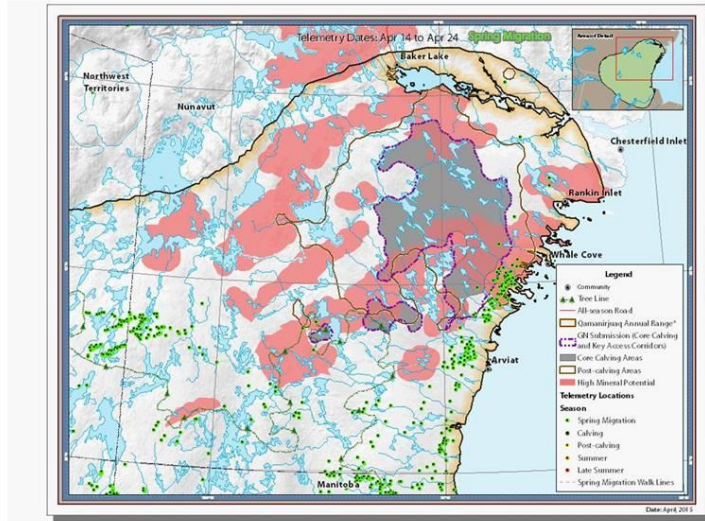
ዕድረ-ገጽ ስልጠና



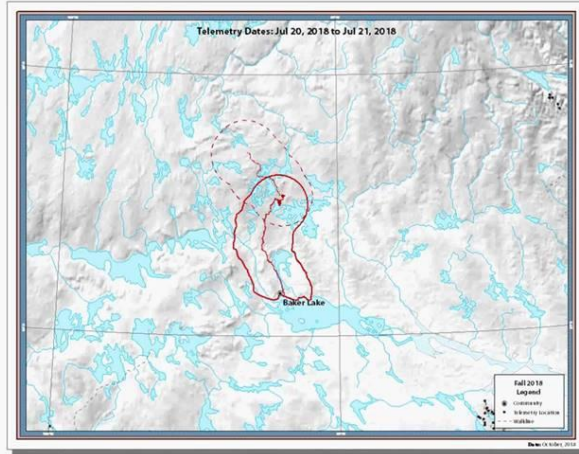
ገጽ 45 ላይ ያለው ልዩ ልዩ ገጽ ለተዘጋጀው ስርዓቱ ነው ለመረጃ ለውጭ ጋር ይገናኙ።



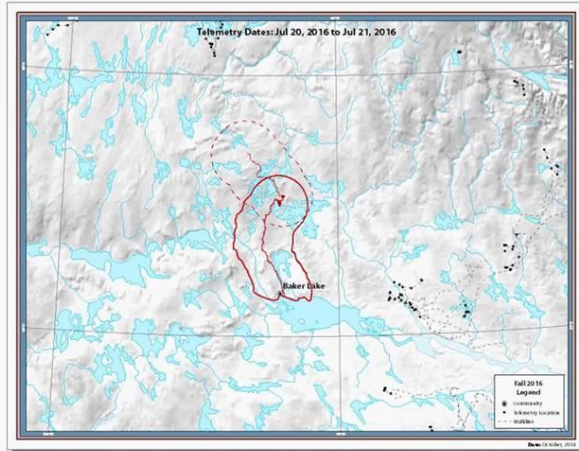
የጋጋና ጥቅም ላይ የዋለው ክፍል



2018



2016





ᑎᑎᑖᑖᑲᑎᑦᑲ ᐃᐃᑲᑦᑎᑦᑲ ᐱᑲᑲᑦᑲ ᐃᐃᑲᑦᑎᑦᑲ ᑲᑲᑲᑦᑎᑦᑲ

ᐃᑲᑲᑦᑎᑦᑲ ᑲᑲᑲᑦᑎᑦᑲ ᐱᑲᑲᑦᑲ ᑲᑲᑲᑦᑎᑦᑲ (HTO) – ᑲᑲᑲᑦᑎᑦᑲ ᐃᐃᑲᑦᑎᑦᑲ ᑲᑲᑲᑦᑎᑦᑲ 2018-ᑲᑲᑲᑦ

ᑲᑲᑲᑦᑎᑦᑲ ᐱᑲᑲᑦᑎᑦᑲ ᐱᑲᑲᑦᑎᑦᑲ ᐱᑲᑲᑦᑎᑦᑲ ᐱᑲᑲᑦᑎᑦᑲ ᐱᑲᑲᑦᑎᑦᑲ

