

ᑕᑦᓂᑭᑎᑯᑦ ᐃᑎᓐᓂ ᑲᐃᑕᑦ ᐃᑎᓐᑦᑦ ᓂᓂᑦᑦ  
ᐱᓐᓂ ᑲᓂᐃᑦᑦᑦᑦᑦᑦ ᐱᑦᑦᑦᑦ ᐃᑎᓐᑦᑦᑦᑦ ᐃᑎᓐᑦᑦᑦᑦ  
ᓂᓂᑦᑦ ᐃᑎᓐᑦᑦᑦᑦᑦᑦ ᑲᑎᑎᑦᑦᑦᑦ

# Tallurutiup Imanga National Marine Conservation Area Update on the Interim Management Plan

Nunavut Wildlife Management Board



ᐃᑎᓐᑦᑦ 25. 2026 February 25, 2026



Parks Canada Parcs Canada

## ለኅድህድህ ርዕሰ ነገሮች:

1. ደብዳቤ ለጥያቄው ለመረጃ ለማግኘት ለሚገቡት ሰነድ ለመስጠት
2. ለደብዳቤው ለሚገቡት ሰነድ ለመስጠት ለሚገቡት ሰነድ ለመስጠት ለሚገቡት ሰነድ ለመስጠት
3. ለደብዳቤው ለሚገቡት ሰነድ ለመስጠት ለሚገቡት ሰነድ ለመስጠት ለሚገቡት ሰነድ ለመስጠት
4. ለደብዳቤው ለሚገቡት ሰነድ ለመስጠት ለሚገቡት ሰነድ ለመስጠት ለሚገቡት ሰነድ ለመስጠት

## Purpose of presentation:

1. Summary of the IMP's development
2. Updates on progress of the IMP since October 2024
3. Explain the next steps
4. Answer questions/take comments

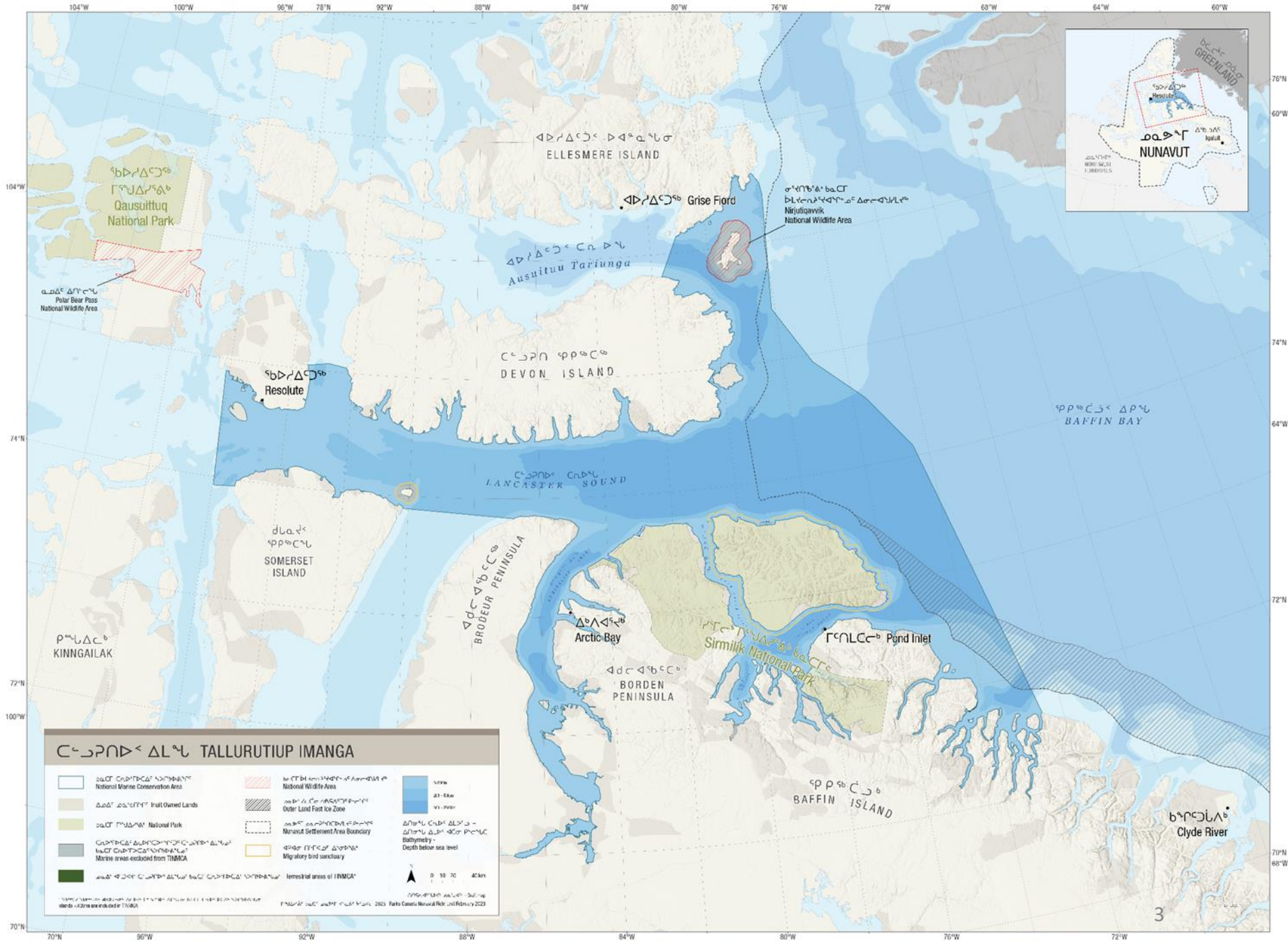


ᑕᓕᓗᓗᓗᓗᓗᓗᓗ  
 ᐃᓕᓗᓗᓗᓗᓗᓗᓗ  
 ᐃᓕᓗᓗᓗᓗᓗᓗᓗᓗ

108,000 km<sup>2</sup>

Tallurutiup  
 Imanga  
 National  
 Marine  
 Conservation  
 Area

108,000 km<sup>2</sup>





# ᐱᓯᐘᓱᐱ ᐘᐅᓪᓴᓯᓴᓱᐱᓴᓄᓪ ᐸᓴᓄᐅᓱᐱ

## Interim Management Plan

- ᐃᓴᓴᓴᐅᓄᓴᓯᐸ ᐘᐅᓪᓴᓯᓴᓱᓱᓴᓴᓄᓪ ᓴᓱᓴᓴᓴᓄᓪ ᐘᓴᓴᓴ ᐘᐅᓴᓴᓴᓴᓄᓪ
  - ᓴᓱᓱᓴᓴᓴᓄᓪ ᐃᓄᐅᓴᓄᓪ ᓴᐅᓴᓴᓴᓴᓴᓄᓪ, ᓄᓄᓄᓴᓴᓴ ᓴᓴᓴᓴᓴᓄᓪ, ᐘᓴᓴᓴ ᓴᓴᓴᓴᓴᓄᓪ ᓴᓴᓴᓴᓴᓄᓪ ᐱᓴᓴᓴᓴᓴᓄᓪ
  - ᐱᓴᐅᓴᓴᓄᓪ ᓄᓄᓄᓴᓄᓪ, ᐱᓴᓴᓴᓴᓴᓴᓄᓪ ᐘᓴᓴᓴ ᓱᐅᐅᐅᓴᓄᓄᓄᓪ
  - ᐱᓴᐅᓴᓴᓄᓪ ᓴᓴᓴᓴᓴᓄᓪ ᐃᓄᓴᓴᓴᓴᓄᓪ ᐘᓴᓴᓴᓴᓄᓪ
  - ᐸᐃᓴᓴᓴᓄᓪ ᓱᓴᐅᓄᓄᓪ ᐃᓴᓴᓴᓴᓴᓄᓪ ᐘᐅᓪᓴᓯᓴᓴᓄᓪ ᐱᓴᓴᓴᓴᓄᓪ
- 
- Guidance for the Aulattiqatigiit Board and users
  - Developed by Qikiqtani Inuit Association, Government of Nunavut, and Government of Canada
  - Input from communities, stakeholders and the public
  - In place until a full management plan is developed



# ᐱᓯᐘᓱᓂ ᐘᐅᓚᓕᓂᓴᓂᐱᓂᓴᓂᐅᓕ ᐘᓕᓂᐅᓂ

## Interim Management Plan

- ᐘᓚᓂᐅᓂᐱᓂᓴᓂᐅᓕ ᓴᓱᓱᓱᓂᐅᓴᓂᐅᓂ
- ᐅᓂ ᐱᓯᐘᓱᓂᐅᓕ ᐘᐅᓚᓕᓂᓴᓂᐱᓂᓴᓂᐅᓕ ᐘᓕᓂᐅᓂ ᓱᓂᓴᓂᐅᓂᐱᓂᓴᓂᐅᓂᐱᓂᓴᓂᐅᓂ ᐘᓚᓂᐅᓂᐱᓂᓴᓂᐅᓂᐱᓂᓴᓂᐅᓂ ᓚᓕᓂᐅᓂᐱᓂᓴᓂᐅᓂ ᐅᓂᓚᓕᓂᐅᓂ ᓚᓂᐅᓂᐱᓂᓴᓂᐅᓂ ᓴᓴᓴᓴᓂᐅᓂᐱᓂᓴᓂᐅᓂ ᐘᓚᓂᐅᓂ ᓚᓂᐅᓂᐱᓂᓴᓂᐅᓂ ᓴᓴᓴᓴᓂᐅᓂᐱᓂᓴᓂᐅᓂ ᐱᓴᓂᓴᓂᐅᓂ

- Required for establishment
- The IMP is the last step required to establish Tallurutiup Imanga NMCA under the *Canada National Marine Conservation Areas Act*





# Contents of the Interim Management Plan



## VISION

Expresses an inspiring and vivid – yet achievable – description of the desired future state of the NMCA.



## OBJECTIVES

Answer the question: “In order to achieve the vision, what results do we need to see?”



## TARGETS

Answer the question: “How do we measure our progress toward achieving the desired results?”



## ZONING

From more to less restrictive, describes what activities can take place in an area, when they can take place, and under what conditions.










# Objectives

## Objective 1

- The natural and cultural heritage of Tallurutiup Imanga is protected and conserved.

**Targets 3, 4 and 6 are related to wildlife.**



## Objective 2

- The sustainable use of marine and terrestrial resources respects Inuit rights, results in economic and social benefits for Inuit, and enhances the well-being of the associated communities.

## Objective 3

- Collaborative research and monitoring increases awareness, informs decision making, and promotes knowledge collection and sharing.

**Target 1 is related to wildlife.**



## Objective 4

- Collaborative and coordinated prevention, preparedness, and response planning increases safety of the associated communities and NMCA users and the protection of Tallurutiup Imanga.



## Objective 1

- **Target 3** - Processes for issuing authorizations (such as permits or licenses) for activities in Tallurutiup Imanga NMCA are developed, and documented in a format that is publicly available, by the end of year 2. These processes prioritize the protection of wildlife and Inuit use of the area in the management of other uses and activities within the NMCA. To the extent possible, these processes are streamlined with existing procedures.
- **Target 4** - As per the Federal Marine Protected Areas Protection Standard, an assessment of the compatibility of the use of bottom trawl gear with the NMCA's conservation objectives is conducted in collaboration with communities and stakeholders, and a report delivered to the Aulattiqatigiit Board by the end of year 5.
- **Target 6** - An assessment of the need for increased protection of colonial seabirds and their habitat is completed in collaboration with the Canadian Wildlife Service, and a report with findings and recommendations delivered to the Aulattiqatigiit Board by year 3.

## Objective 3

- **Target 1** - A minimum of 3 indicators to monitor ecological sustainability that are based on Inuit Qaujimagatuqangit and western science are co-developed with communities and approved by the Aulattiqatigiit Board. The monitoring of these indicators commences within 5 years.

# ᐆᓕᓕᓕᓐᓂᓐ ᐃᓐᓂᓐᓂᓐ

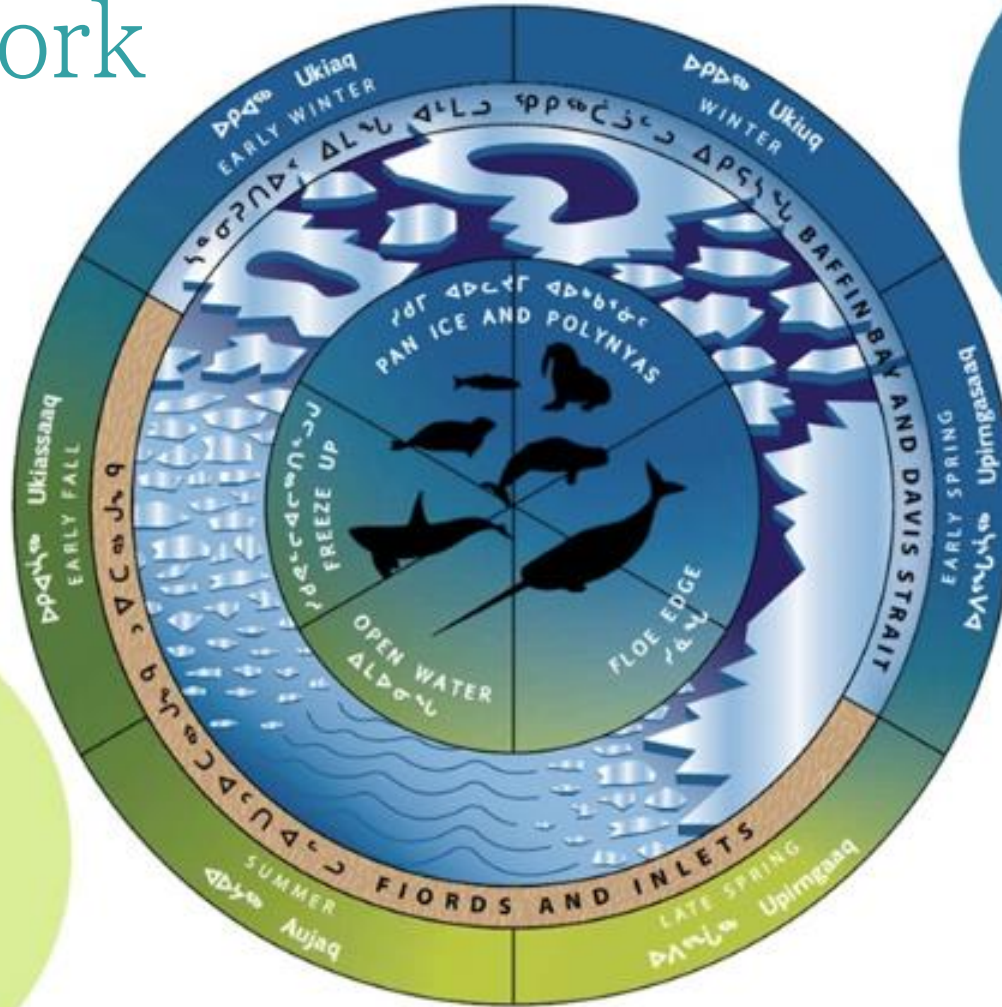
## Zoning Framework

Open Water  
Zoning Plan

July 21 to  
November 15

ᐃᐱᐱᓐ 21-ᓂᓐ  
ᓂᓐᓂᓐᓂᓐ  
ᐃᓐᓂᓐ

ᓂᓐᓂᓐ 15-ᓂᓐ



ᓂᓐᓂᓐᓂᓐ  
ᐆᓕᓕᓐᓂᓐ  
ᐃᓐᓂᓐ

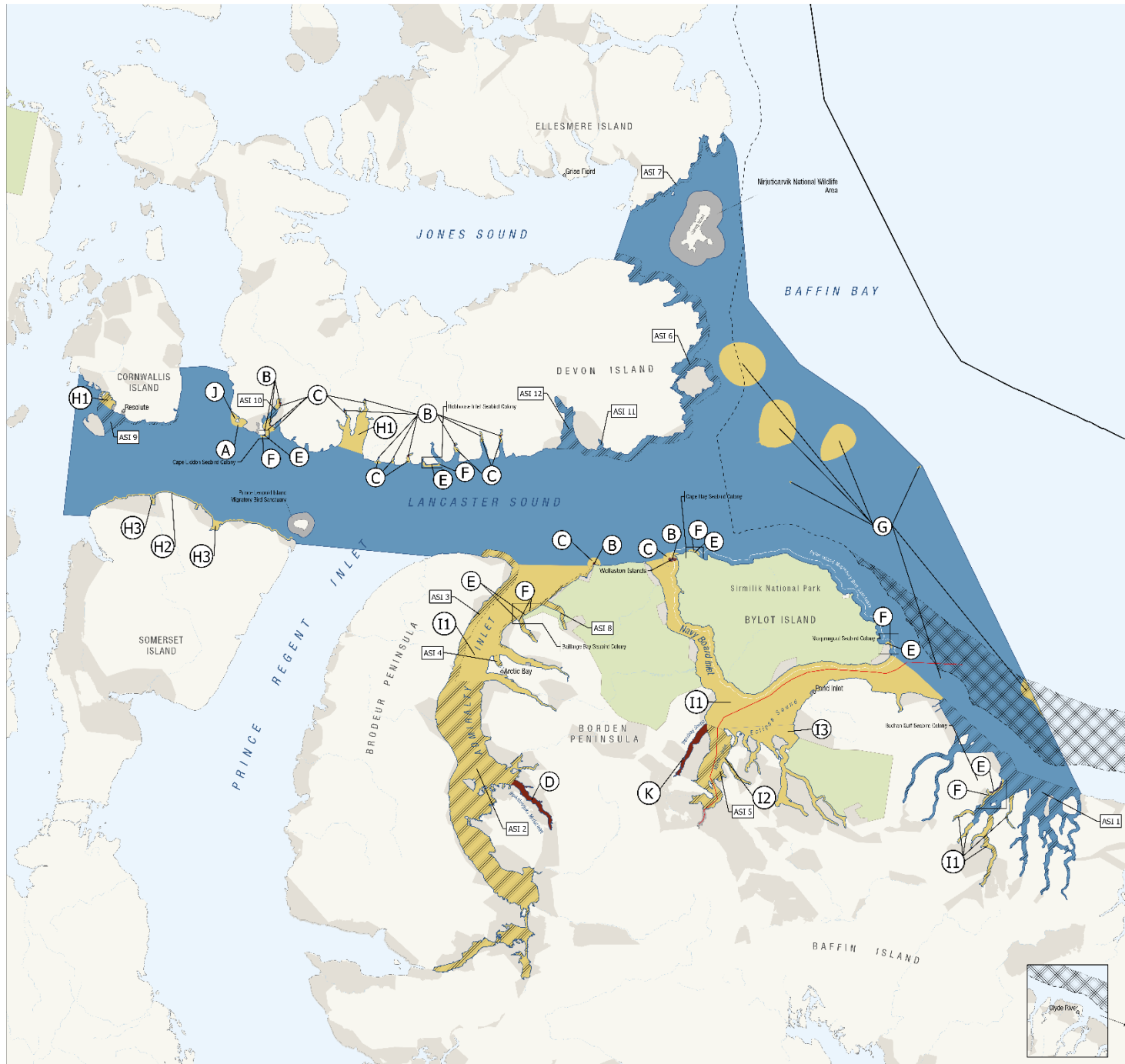
ᓂᓐᓂᓐ 16-ᓂᓐ  
ᓂᓐᓂᓐ 20-ᓂᓐ

Ice Zoning  
Plan

November 16  
to July 20



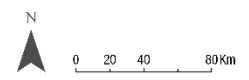
# OPEN WATER SEASON



## Open Water Season (July 21 - November 15)

- Zoning**
- Zone 1 (strict protection)
  - Zone 3 (habitat protection)
  - Zone 4 (multiple use)
  - Area of special importance to Inuit (ASI)
  - Marine exclusion from TINMCA
  - National Park
  - Tallurutiup Imanga NMCA
- Other Features**
- Inuit Owned Lands
  - Nunavut Settlement Area
  - Bylot Island Migratory Bird Sanctuary
  - Outer land fast ice zone
  - Exclusive Economic Zone Boundaries
  - Northern Shipping Route

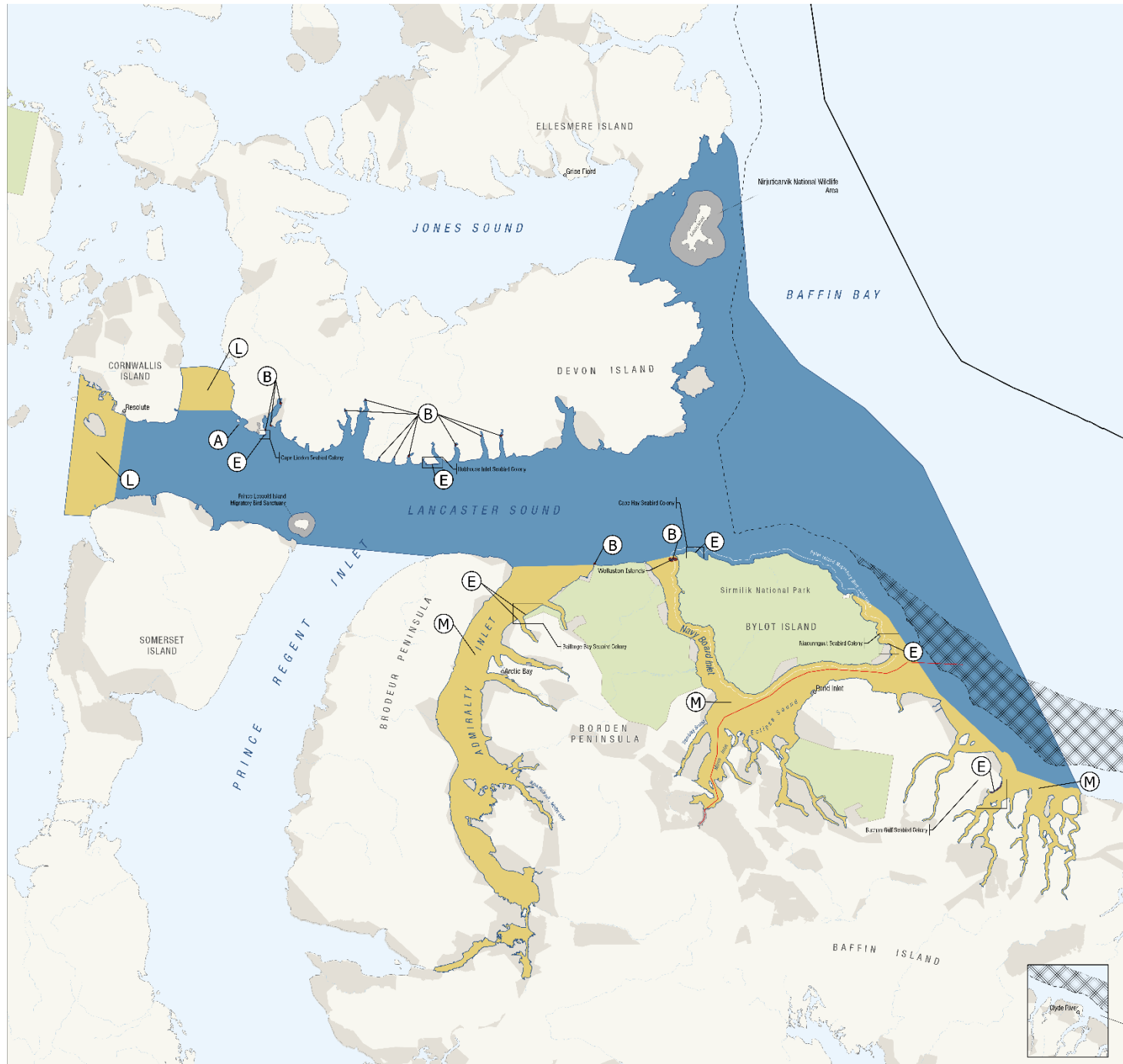
Habitat Code	Description
A	Wreck of Breda/bane National Historic Site
B	Walrus haul out
C	Walrus haul-out buffer
D	Ikoikittuarjuk / Moffet Inlet
E	Seabird colony
F	Seabird colony buffer
G	Significant Benthic Areas
H1, H2, H3	Beluga summer aggregation area
I1, I2, I3	Narwhal summer aggregation area
J	Underwater cultural resource area
K	Tremblay Sound







# ICE SEASON



**Ice Season**  
(November 16 - July 20)

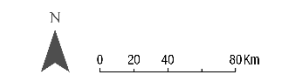
**Zoning**

- Zone 1 (strict protection)
- Zone 3 (habitat protection)
- Zone 4 (multiple use)
- Marine exclusion from TINMCA
- National Park
- Tallurutiup Imanga NMCA

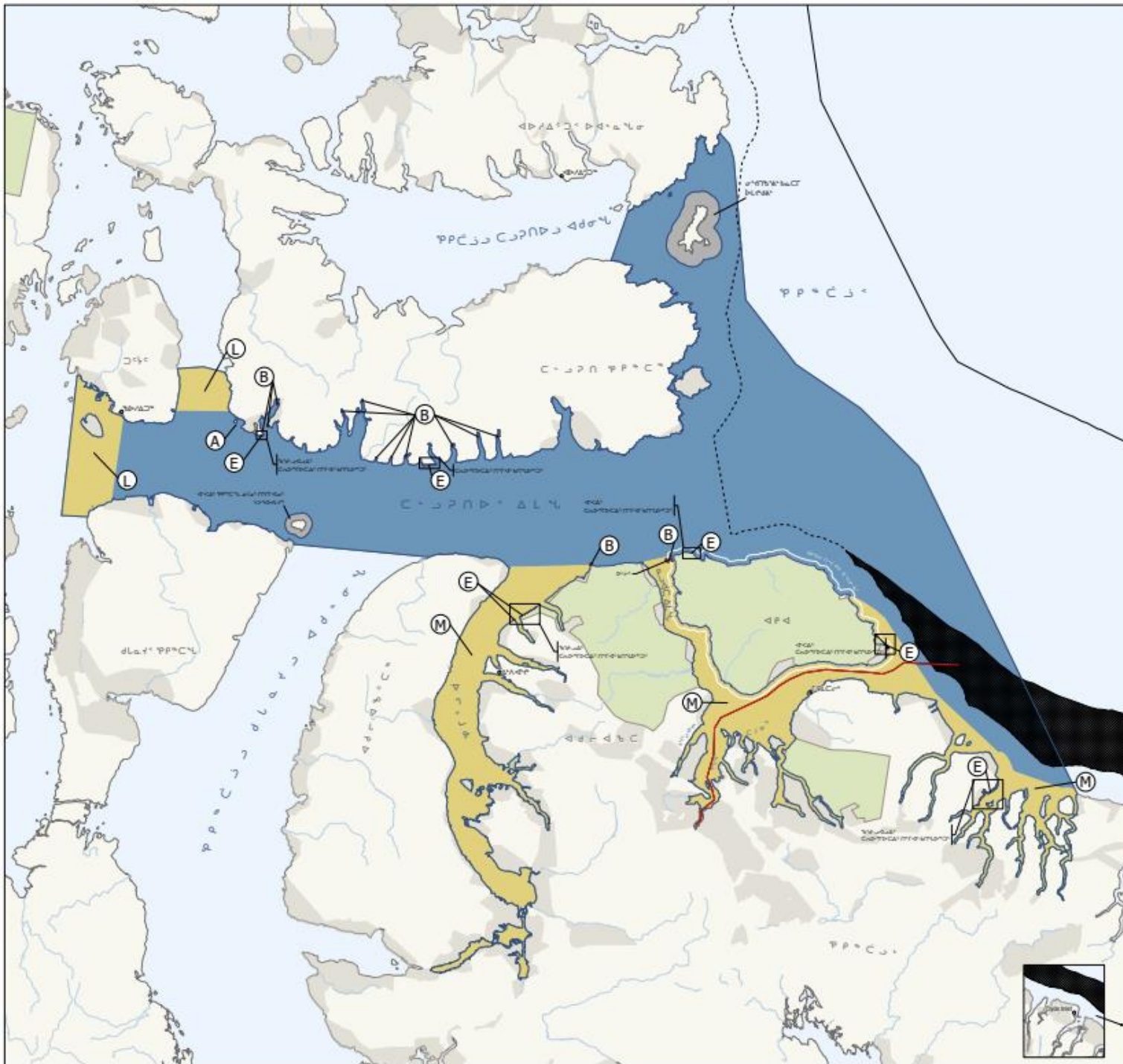
**Other Features**

- Inuit Owned Lands
- Nunavut Settlement Area
- Bylot Island Migratory Bird Sanctuary
- Outer land fast ice zone
- Exclusive Economic Zone Boundaries
- Northern Shipping Route

Habitat Code	Description
A	Wreck of Breadalbane National Historic Site
B	Walrus haul-out
E	Seabird colony
L	Feary Caribou sea ice crossing critical habitat
M	Key sea ice habitat



# የጊዜ ስፈራ ማዕከላዊ ማረጋገጫ



የጊዜ ስፈራ  
(መለኪያ 15 ኅይወት 20)

- የጊዜ ስፈራ**
- የጊዜ 1 (አገልግሎት)
  - የጊዜ 3 (አገልግሎት ለጊዜ ስፈራ)
  - የጊዜ 4 (አገልግሎት ለጊዜ ስፈራ)
  - ርዕሰ ከተማ ለጊዜ ስፈራ
  - ርዕሰ ከተማ ለጊዜ ስፈራ
  - የጊዜ ስፈራ
  - ርዕሰ ከተማ ለጊዜ ስፈራ

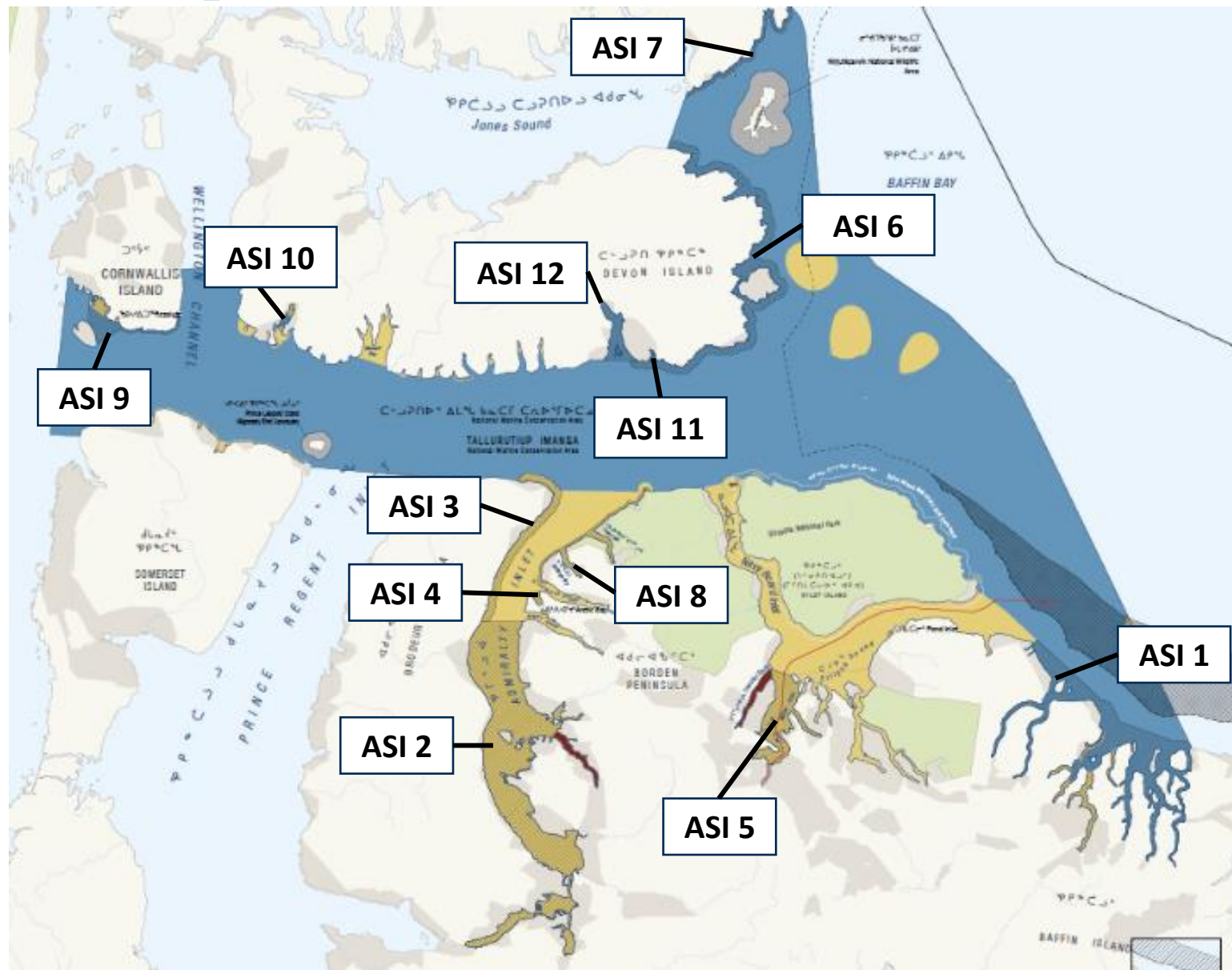
- የጊዜ ስፈራ**
- ልማት ስፈራ
  - ልማት ስፈራ
  - ልማት ስፈራ
  - ልማት ስፈራ
  - ልማት ስፈራ
  - ልማት ስፈራ
  - ልማት ስፈራ
  - ልማት ስፈራ

የጊዜ ስፈራ	ግብ
A	የጊዜ ስፈራ ለጊዜ ስፈራ
B	የጊዜ ስፈራ
E	የጊዜ ስፈራ ለጊዜ ስፈራ
L	የጊዜ ስፈራ ለጊዜ ስፈራ
M	የጊዜ ስፈራ ለጊዜ ስፈራ



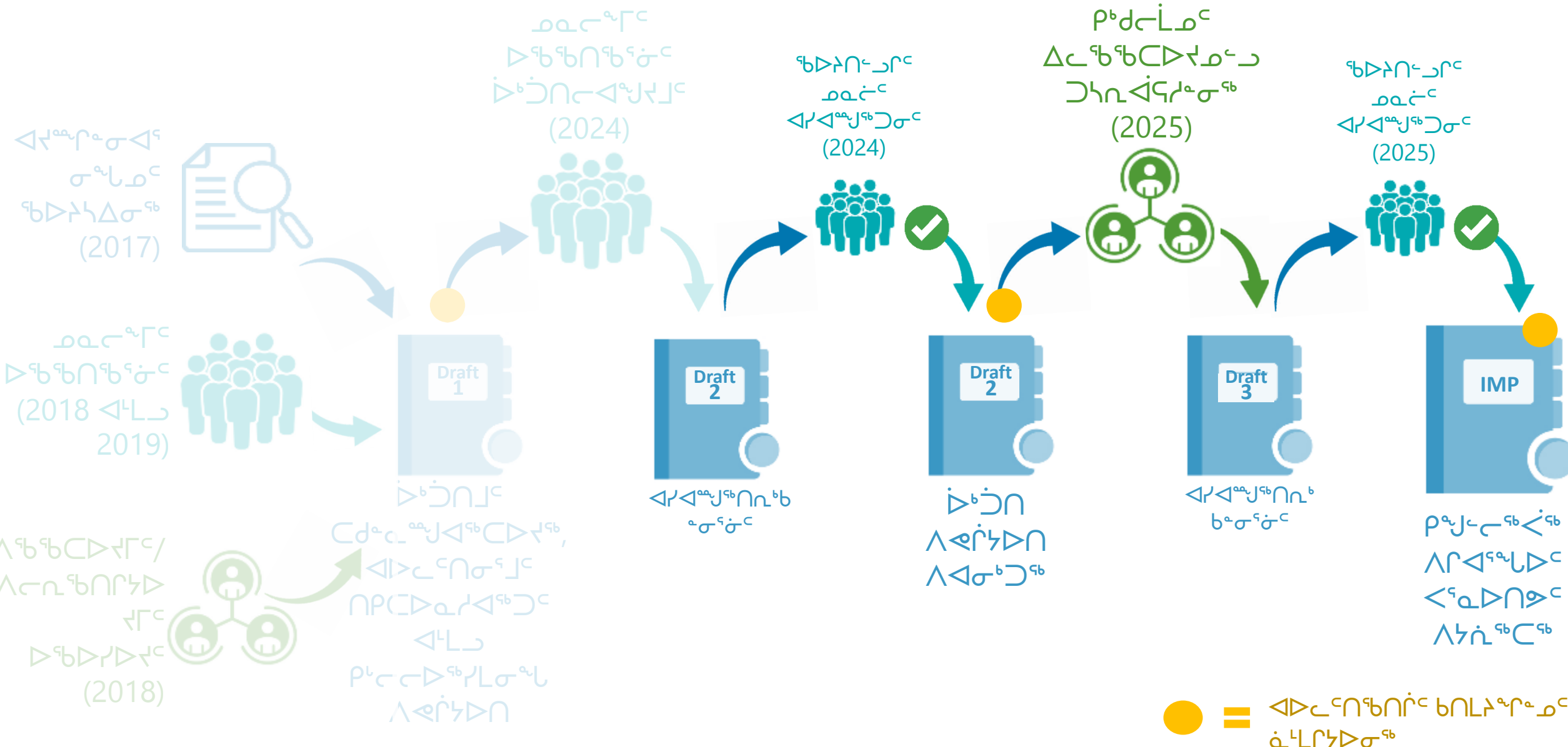
መደል ለተረጎሙት ስርዓት (ASI)

Areas of Special Importance to communities (ASI)

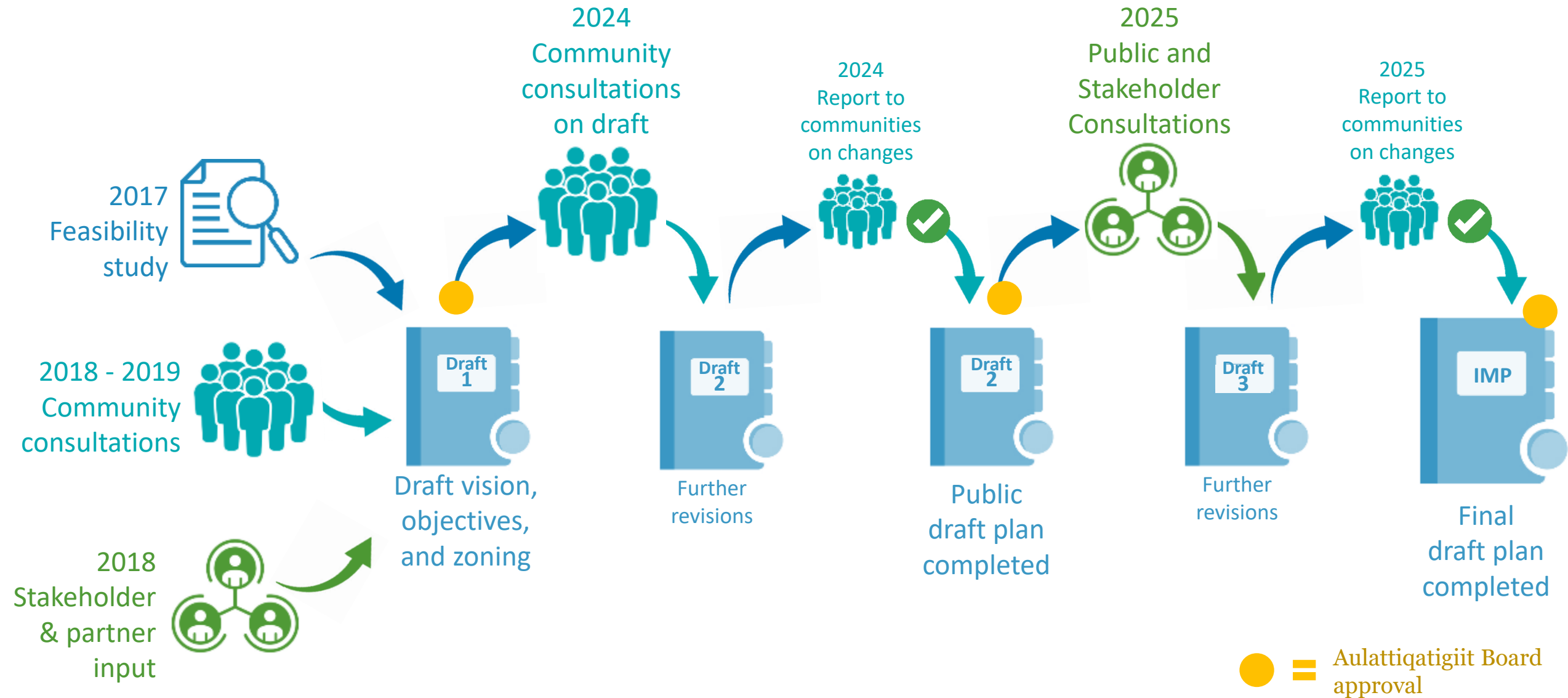




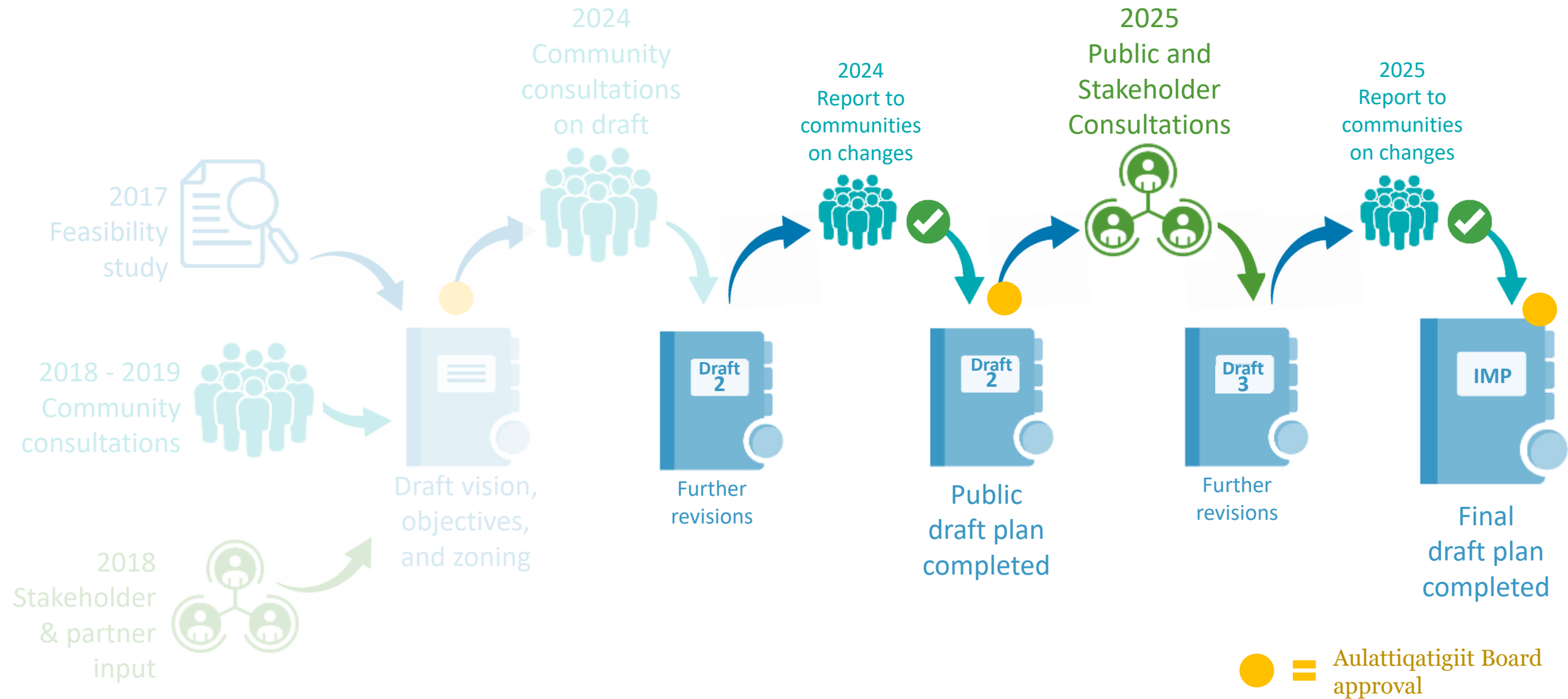
# ርዕሰ ስራ ማረጋገጫ ለግብርና ጥያቄ ማቅረቢያ ለግብርና ጥያቄ ማቅረቢያ 2024-5



# Development of the Interim Management Plan



# Since the NWMB update in October 2024





ᑭᓄᓂᓄᓂᓄᓂ ᐱᓕᓂᐱᓄᓂᓄᓂᐱᓄᓂᓄᓂ ᐱᓕᓂᐱᓄᓂᓄᓂᐱᓄᓂᓄᓂ  
Next steps in the process



# ՔՅՄԵՐԳԸ ԱՐԿՈՎՅՈՒՄՆԵՐԸ ԱՐԿՈՎՅՈՒՄԸ

ԱՔՐԻՆԻՍ  
ՎՈՐԻՆՏՆԵՐԸ  
ԱՆԿՆԵՐԸ  
ՆԱԿԵՐՄԵՆՏԻ  
ՎԵՐԱԳՐՈՒՄԸ  
ԵՎ ԲՆԱԿՆԵՐԸ  
ՎՈՐԻՆՏՆԵՐԸ

ԸՆԴՈՒՄԸ ԵՎ ԵՐԿՐՈՒՄԸ  
ՎՈՐԻՆՏՆԵՐԸ  
ՎՈՐԻՆՏՆԵՐԸ  
ՎՈՐԻՆՏՆԵՐԸ  
ՎՈՐԻՆՏՆԵՐԸ  
ՎՈՐԻՆՏՆԵՐԸ  
ՎՈՐԻՆՏՆԵՐԸ

ՉՏՂՈՒՄԸ ԱՐԿՈՎՅՈՒՄԸ  
ՎՈՐԻՆՏՆԵՐԸ  
ՎՈՐԻՆՏՆԵՐԸ  
SWMB ԼԿ 2026-Ը

ՎՈՐԻՆՏՆԵՐԸ  
ՎՈՐԻՆՏՆԵՐԸ  
ՎՈՐԻՆՏՆԵՐԸ  
ՎՈՐԻՆՏՆԵՐԸ  
ՎՈՐԻՆՏՆԵՐԸ  
ՎՈՐԻՆՏՆԵՐԸ  
ՎՈՐԻՆՏՆԵՐԸ

ՉՏՂՈՒՄԸ  
ՎՈՐԻՆՏՆԵՐԸ  
ՎՈՐԻՆՏՆԵՐԸ  
ՎՈՐԻՆՏՆԵՐԸ  
ՎՈՐԻՆՏՆԵՐԸ  
ՎՈՐԻՆՏՆԵՐԸ  
ՎՈՐԻՆՏՆԵՐԸ

ᄃᄅᄇᄀᄁ!

Thank you!

