

# Tallurutiup Imanga National Marine Conservation Area Interim Management Plan

Presentation for Nunavut  
Wildlife Management Board  
June 2026



Parks  
Canada

Parcs  
Canada

# Tallurutiup Imanga NMCA Planning Committee



**Justin Buller, Jovan Simic**  
Qikiqtani Inuit Association



**Michele LeBlanc-Havard**  
Government of Nunavut



**Laurent Jonart**  
Government of Canada  
(Parks Canada)

## Support

**Andrew Orawiec**  
Transport Canada

**Kevin Tallon**  
Fisheries and Oceans Canada

**Brigitte Bourdon, Karen Halley, Katriina  
O’Kane, Allison Stoddart**  
Parks Canada

**Lou-Ann Cornacchio, Jamessee Moulton,  
Justin Hack**  
Government of Nunavut

# Purpose of presentation

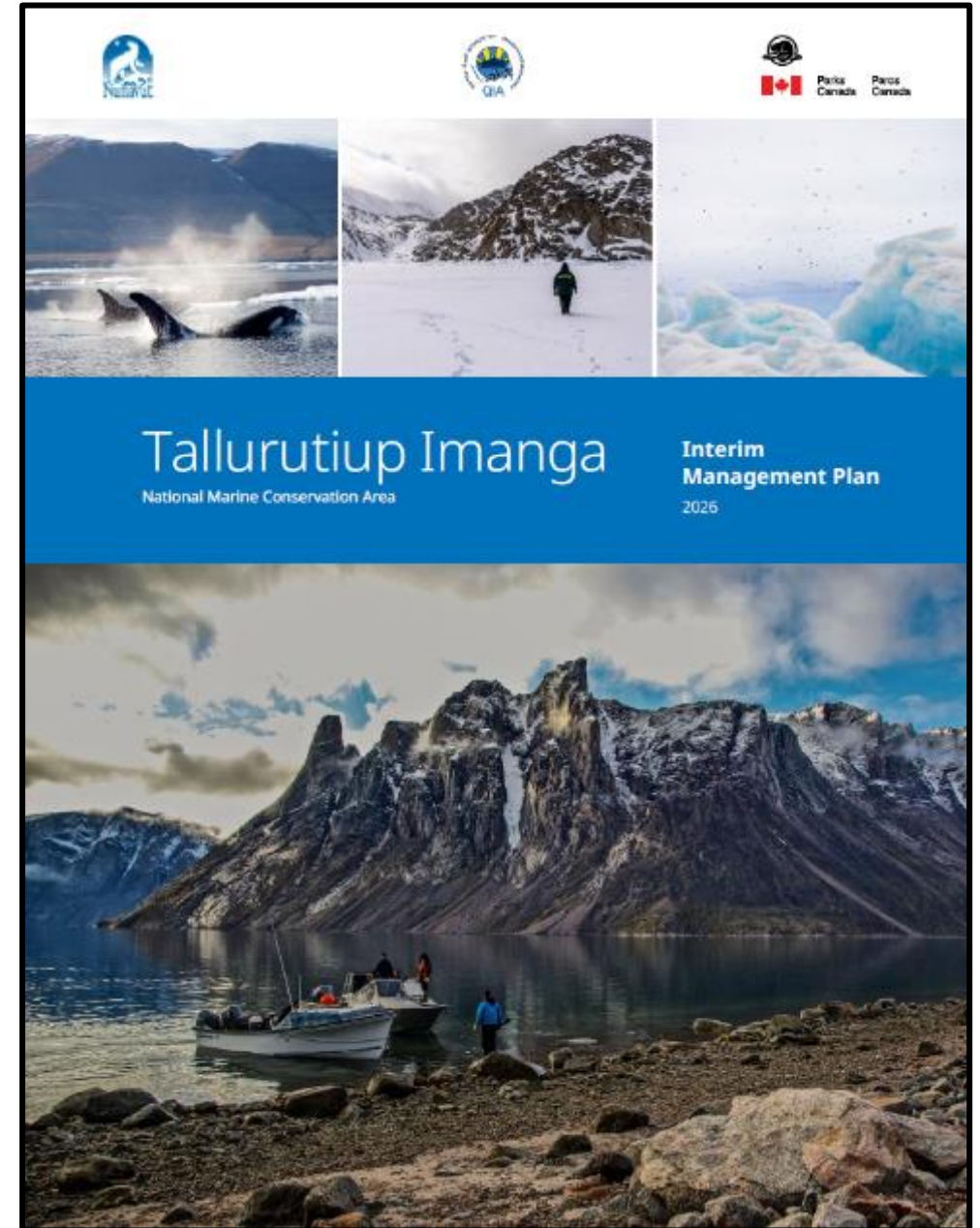
1. Introduction to NMCA's and Tallurutiup Imanga
2. Review the development and provide an overview of the interim management plan
3. Provide details on aspects of the plan that fall under the NWMB's mandate
4. Request approval for the plan



# Issue

Seeking NWMB approval on:

- the Interim Management Plan for Tallurutiup Imanga NMCA**
  - In accordance with Section 5.2.34 (c) of the NA
- non-Inuit limitations on harvesting in certain areas of Tallurutiup Imanga NMCA**
  - In accordance with Section 5.6.48 of the NA



# Introduction to National Marine Conservation Areas



# Parks Canada's National Marine Conservation Areas (NMCAs)

- **Protect and conserve** representative marine areas for the **benefit, education and enjoyment of the people** living in Canada and the world
- Managed and used in a sustainable manner that **meets the needs of present and future generations** without compromising the structure and function of the ecosystems
- In NMCAs, DFO and Transport Canada retain their regulatory authorities, but within the context of the CNMCA Act

# NMCA Management Goals

1. Protect marine ecosystems and biodiversity
2. Conserve cultural heritage
3. Manage use in an ecologically sustainable manner
4. Support Indigenous leadership in marine conservation
5. Contribute to the well-being of Indigenous peoples and coastal communities
6. Facilitate opportunities for meaningful visitor experiences
7. Enhance awareness and understanding of NMCAs
8. Advance effective collaboration for management



# Activities in NMCA's

- Most activities allowed  
e.g., fishing, tourism, shipping
  - So long as they are done in an ecologically sustainable manner and in alignment with the purpose and objectives of the NMCA
- Activities managed using zoning or other management tools  
e.g., guidelines or best practices shared with users

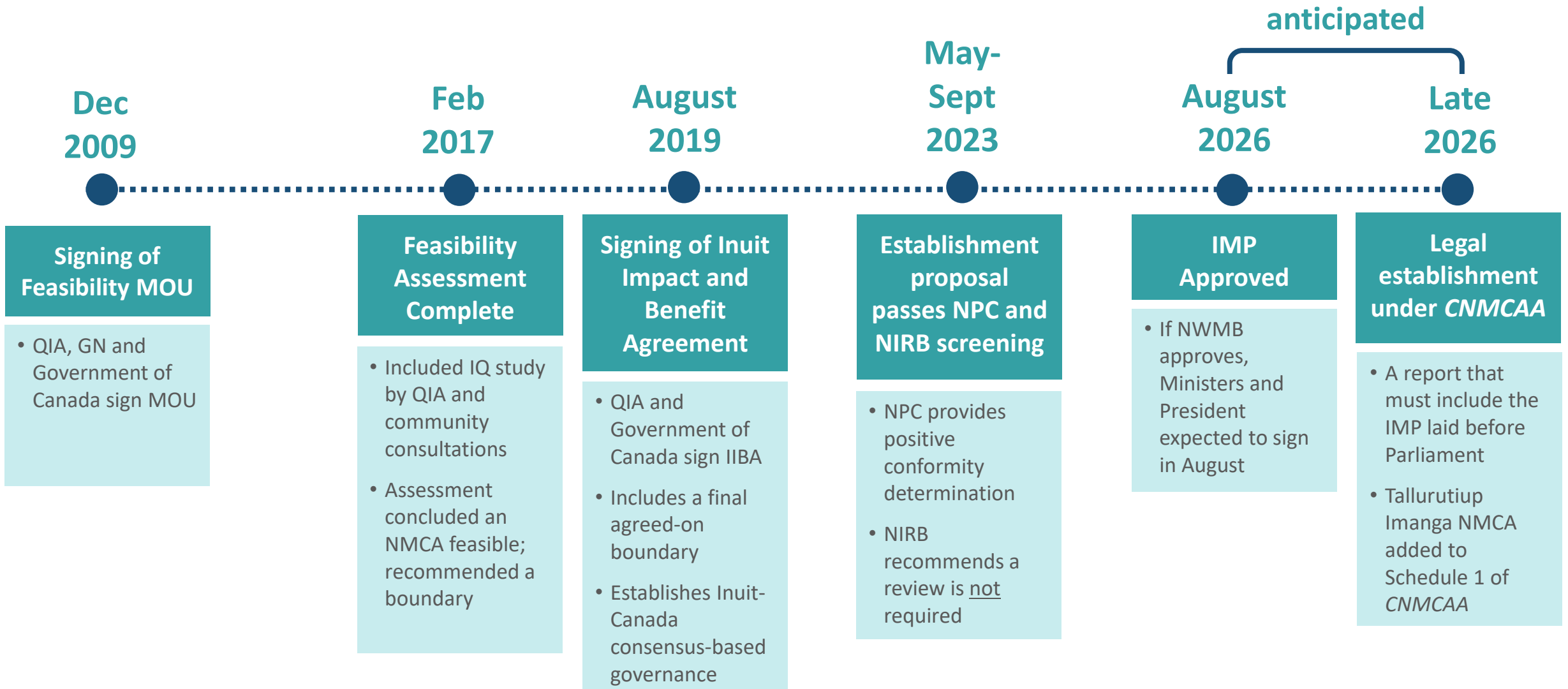
- Inuit harvesting and use
- Commercial fisheries
- Tourism
- Shipping
- Recreational use
- Disposal at sea
- Oil and gas activities
- Mining activities

# Introduction to Tallurutiup Imanga





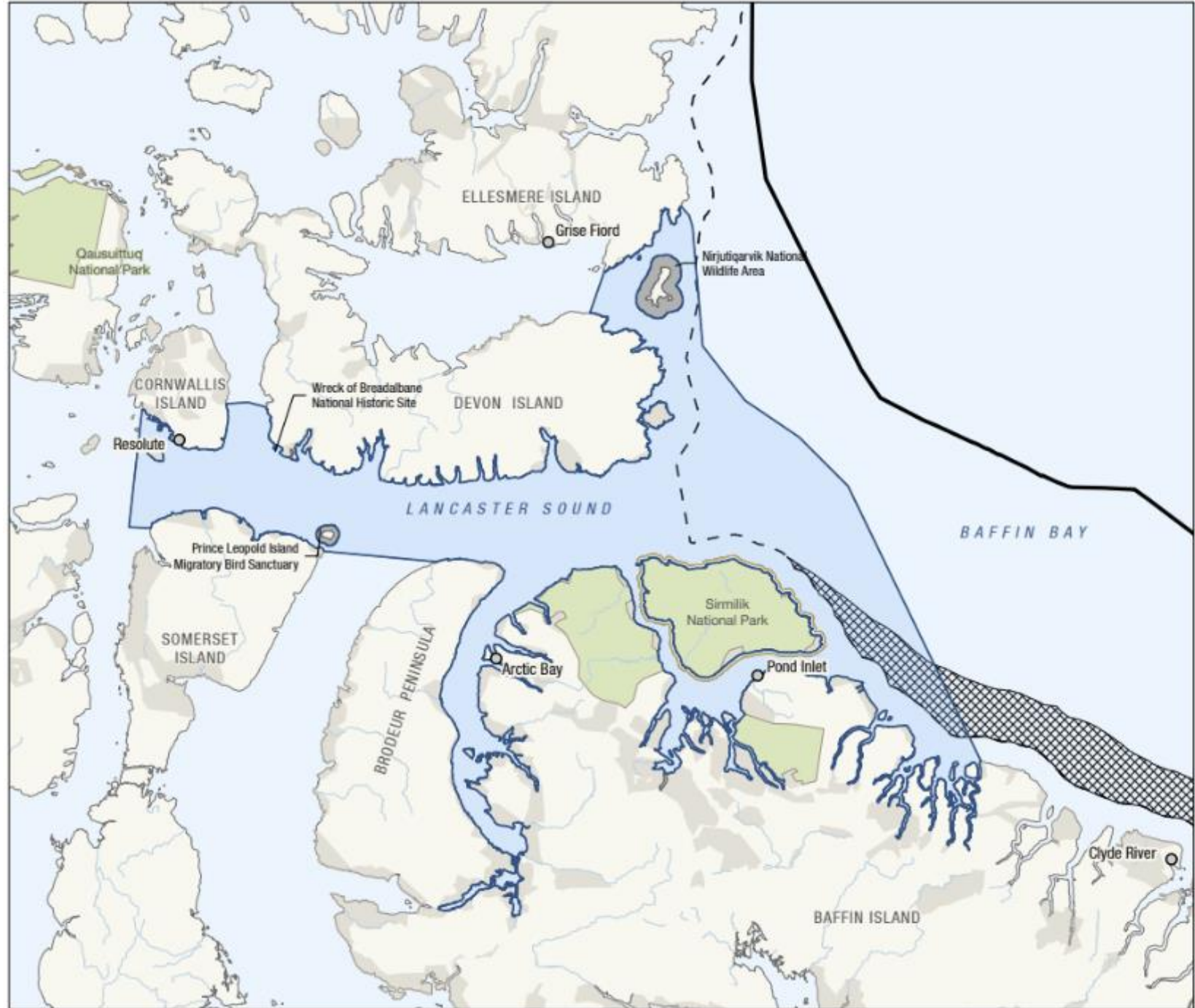


# Tallurutiup Imanga Establishment



### Tallurutiup Imanga National Marine Conservation Area

-  Tallurutiup Imanga National Marine Conservation Area
-  National Park
- Other Features**
  -  Inuit Owned Lands
  -  Nunavut Settlement Area
  -  Bylot Island Migratory Bird Sanctuary
  -  Outer landfast ice zone
  -  Exclusive Economic Zone Boundaries
  -  Marine exclusion from Tallurutiup Imanga National Marine Conservation Area





# Imaq

- Article 6 of the Tallurutiup Imanga IIBA
- Provides advise to QIA on matters affecting Inuit
- Imaq chair sits on the Aulattiqatigiit Board
- Current membership includes QIA's community directors of the five associated communities



# Development of Tallurutiup Imanga Interim Management Plan



# Development of the Interim Management Plan

1

## Phase 1

Drafting the IMP (2018-2023)

2

## Phase 2

Reviewing the IMP (2024-2025)

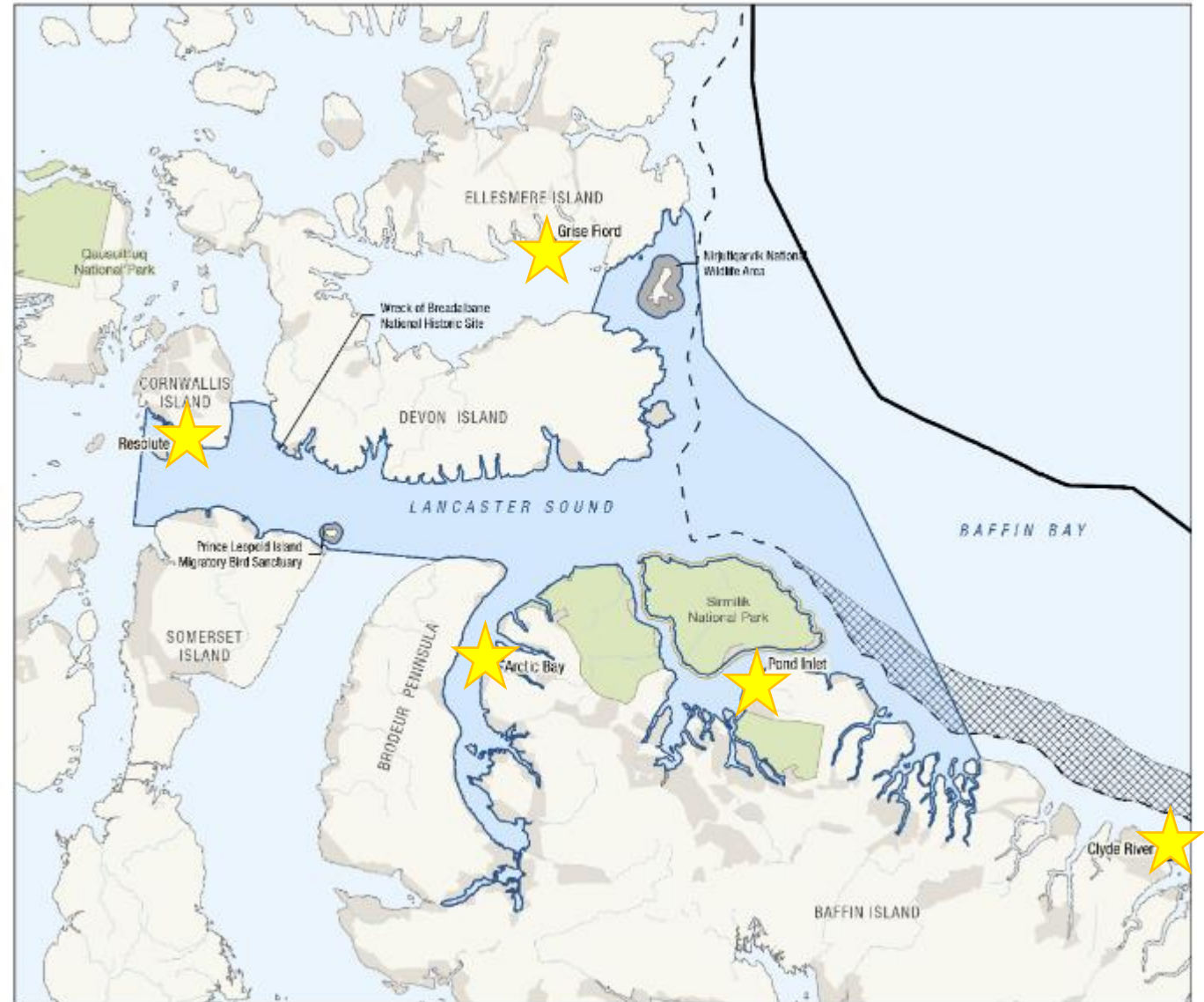
# Communities Consulted

Tallurutiup Imanga Inuit Impact and Benefit Agreement defines the **Tallurutiup Imanga NMCA Communities** as:

- Arctic Bay
- Resolute
- Pond Inlet
- Clyde River
- Grise Fiord

Each community was visited **4 times from 2018 to 2025** in the process of developing the IMP:

1. May - July 2018
2. April - May 2019
3. March 2024
4. November 2024 - January 2025



# Development of the IMP

1

## Phase 1

Drafting the IMP  
(2018-2023)

### Feasibility Assessment

- Tallurutiup Imanga NMCA Feasibility Assessment completed in 2017
- Summary of ecology, regional Inuit Qaujimagatuqangit, and economic considerations

### Community Consultations

- 2 rounds of meetings with Grise Fiord, Resolute, Pond Inlet, Arctic Bay, and Clyde River

### Stakeholder Consultations

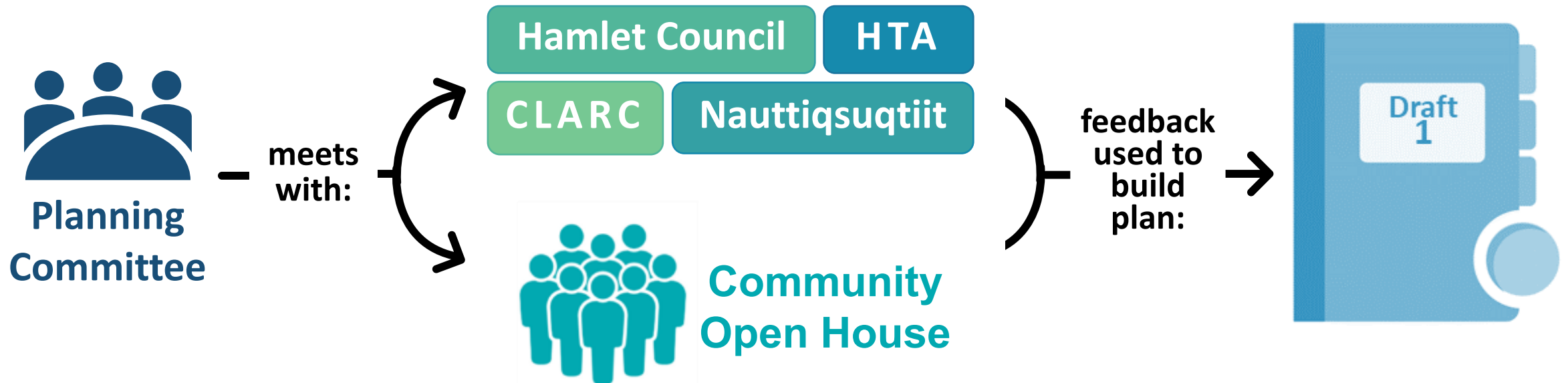
- Meeting and workshops held
- Cruise, shipping, mining, fishing tourism industries
- Nunavut institutions, NGOs, research groups, academia

### Other data sources

- Draft NLUP and QWB submission
- Canadian Wildlife Service data
- Cruise ship data
- Sea ice, flow edge, polynya data

# Phase 1 Community Consultations (2018-2019)

- Purpose of meetings was to hear community inputs and concerns regarding key issues
- 2 rounds of meetings held:
  - ✓ **May to July 2018**
  - ✓ **April to May 2019**



# What we heard

## Community Consultation 2018-2019



Protect and reduce impacts to wildlife ,  
their habitat, and migration routes

Need to manage shipping traffic and  
impacts on wildlife and habitat



Concerns about ice breaking and a  
need for sea ice protection

Manage tourism adjacent to  
communities





# What we heard

## Community Consultation 2018-2019



Improve communications/  
manage cooperatively

Ensure Inuit Qaujimajatuqangit is included in  
management and decision making



Set research priorities / training for  
Inuit to conduct research

Coordinated monitoring within  
TINMCA

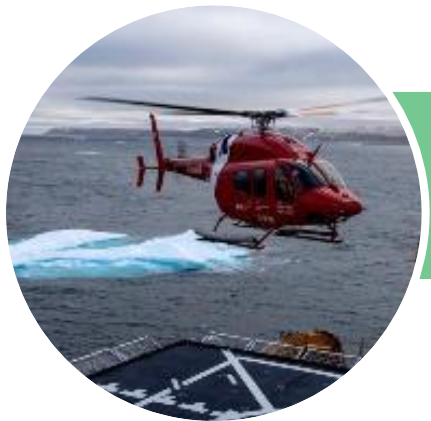


# What we heard

## Community Consultation 2018-2019



Changing ice conditions/  
climate change



Coordination of emergency  
response

Share knowledge and  
information



Enforcement



# Development of the IMP

2

## Phase 2

Reviewing the IMP (2024-2025)

### Community Review

- 2 in-person meetings and one online validation with Grise Fiord, Resolute, Pond Inlet, Arctic Bay, and Clyde River

### Stakeholder Review

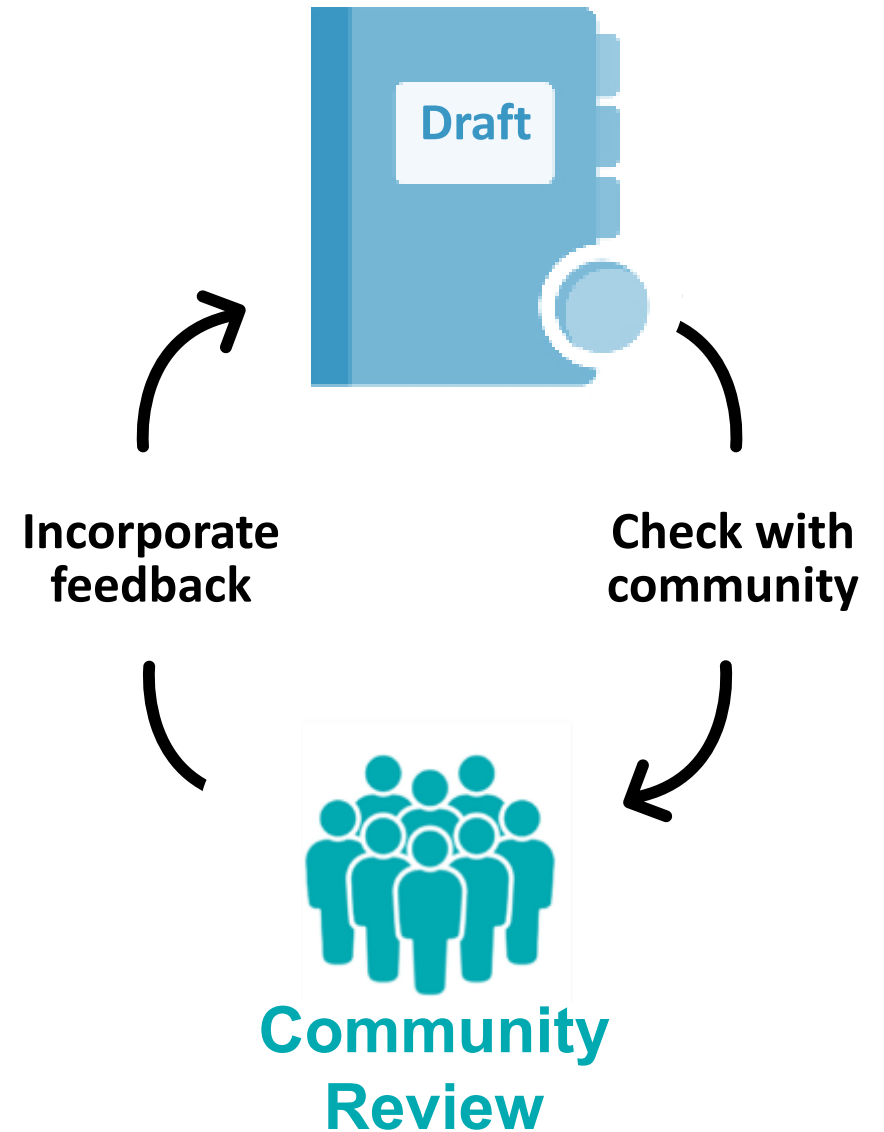
- Met with key industry stakeholders between May and September 2025
- Other stakeholders asked to review by email

### Public Consultation

- IMP posted online June-July 2025

# Phase 2 Community Review (2024-2025)

- Purpose of meetings was to review the draft IMP, and validate subsequent revisions
- 3 rounds of reviews held:
  - ✓ **March 2024**
  - ✓ **November 2024**
  - ✓ **Fall 2025**



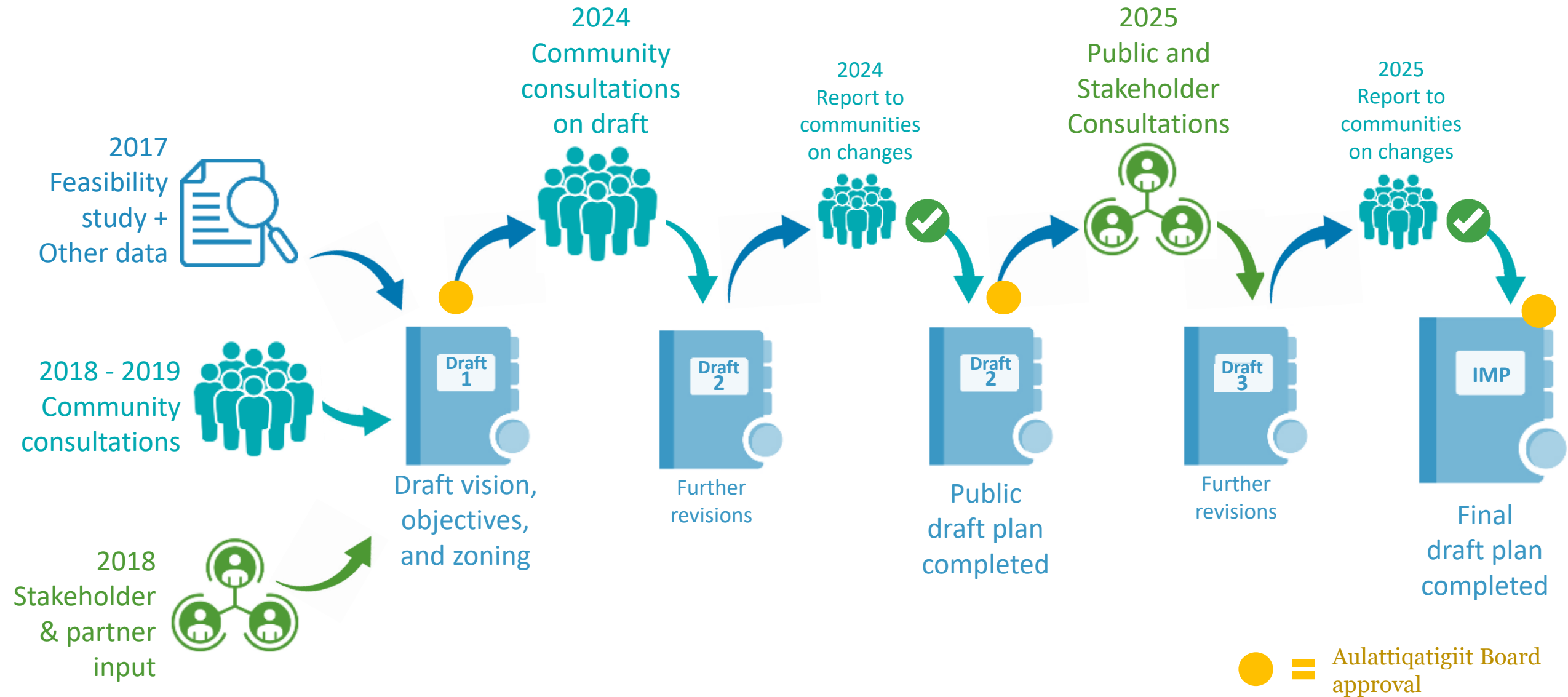


# What we heard

## Community Review 2024-2025

- Changes made to vision statement to better reflect Inuit values
- Changes made to targets to address desire to prioritize infrastructure and expand protection for seabirds
- Changes to dates for seasonal zoning plans to better reflect current seasonal realities
- Changes to the zoning plan to address issues such as:
  - More protection for the floe edge
  - Additional walrus haul-out areas that needed protection
  - Additional measure to better protect beluga and narwhal habitat
  - Extending protection for seabirds along the Buchan Gulf
- Certain areas needed more flexible forms of protection, added Areas of Special Importance to communities
  - These areas are of particular importance to communities and require special management focus to reduce disturbances
- The communities validated all the changes

# Development of the Interim Management Plan



# Consultation and Engagement Summary



2018 - 2025

5  
Communities  
Consulted

- Hunters & Trappers Organizations
- Hamlet Councils
- CLARC
- Public Open Houses

Clyde River  
Arctic Bay  
Resolute  
Pond Inlet  
Grise Fiord

493  
Individuals  
Attended

43  
In-person  
Meetings

**Community**

145  
Organizations  
Engaged

- NGOs
- Nunavut institutions
- Academia
- Industry
  - mining, shipping, tourism, cruise, fisheries

33  
In-person and  
Virtual  
Meetings

443  
Individuals  
Attended

**Stakeholder**

# Overview of Tallurutiup Imanga Interim Management Plan



# What is the Interim Management Plan?

- Guidance for the Aulattiqatigiit Board and users
- Guides management until a full management plan developed
- The IMP is the last step required to establish Tallurutiup Imanga NMCA under the *Canada National Marine Conservation Areas Act*



# Contents of the Interim Management Plan



## VISION

Expresses an inspiring and vivid – yet achievable – description of the desired future state of the NMCA.



## OBJECTIVES

Answer the question: “In order to achieve the vision, what results do we need to see?”



## TARGETS

Answer the question: “How do we measure our progress toward achieving the desired results?”



## ZONING

From more to less restrictive, describes what activities can take place in an area, when they can take place, and under what conditions.



# Vision


Tallurutiup Imanga National Marine Conservation Area is a thriving globally significant ecosystem that sustains and empowers Inuit for generations to come and welcomes visitors to experience, appreciate, and respect its meaning to Inuit, Canada, and the Arctic region.

# Objectives

## Objective 1

- The natural and cultural heritage of Tallurutiup Imanga is protected and conserved.

**Targets 1, 3, 4 and 6 are related to wildlife and wildlife habitat.**




## Objective 2

- The sustainable use of marine and terrestrial resources respects Inuit rights, results in economic and social benefits for Inuit, and enhances the well-being of the associated communities.

## Objective 3

- Collaborative research and monitoring increases awareness, informs decision making, and promotes knowledge collection and sharing.

**Target 1 is related to wildlife and wildlife habitat.**



## Objective 4

- Collaborative and coordinated prevention, preparedness, and response planning increases safety of the associated communities and NMCA users and the protection of Tallurutiup Imanga.



### Objective 1

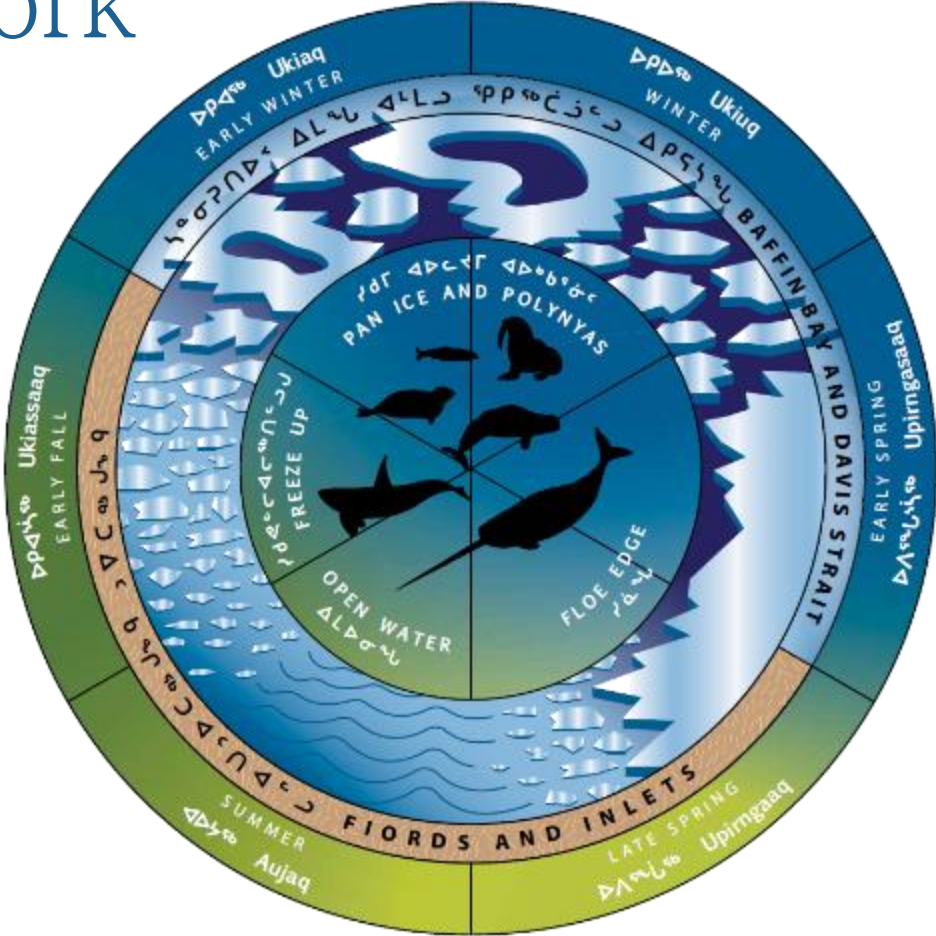
- **Target 1.** The effectiveness of the interim zoning plan in protecting and conserving natural and cultural heritage is evaluated to improve the zoning plan if needed (for example, changes to zone boundaries, or the need for additional management tools to support zoning) by the end of year five.
- **Target 3** - Processes for issuing authorizations (such as permits or licenses) for activities in Tallurutiup Imanga NMCA are developed, and documented in a format that is publicly available, by the end of year 2. These processes prioritize the protection of wildlife and Inuit use of the area in the management of other uses and activities within the NMCA. To the extent possible, these processes are streamlined with existing procedures.
- **Target 4** - As per the Federal Marine Protected Areas Protection Standard, an assessment of the compatibility of the use of bottom trawl gear with the NMCA's conservation objectives is conducted in collaboration with communities and stakeholders, and a report delivered to the Aulattiqatigiit Board by the end of year 5.
- **Target 6** - An assessment of the need for increased protection of colonial seabirds and their habitat is completed in collaboration with the Canadian Wildlife Service, and a report with findings and recommendations delivered to the Aulattiqatigiit Board by year 3.

### Objective 3

- **Target 1** - A minimum of 3 indicators to monitor ecological sustainability that are based on Inuit Qaujimagatuqangit and western science are co-developed with communities and approved by the Aulattiqatigiit Board. The monitoring of these indicators commences within 5 years.

# Zoning Framework

Open Water  
Zoning Plan  
July 21 to  
November 15



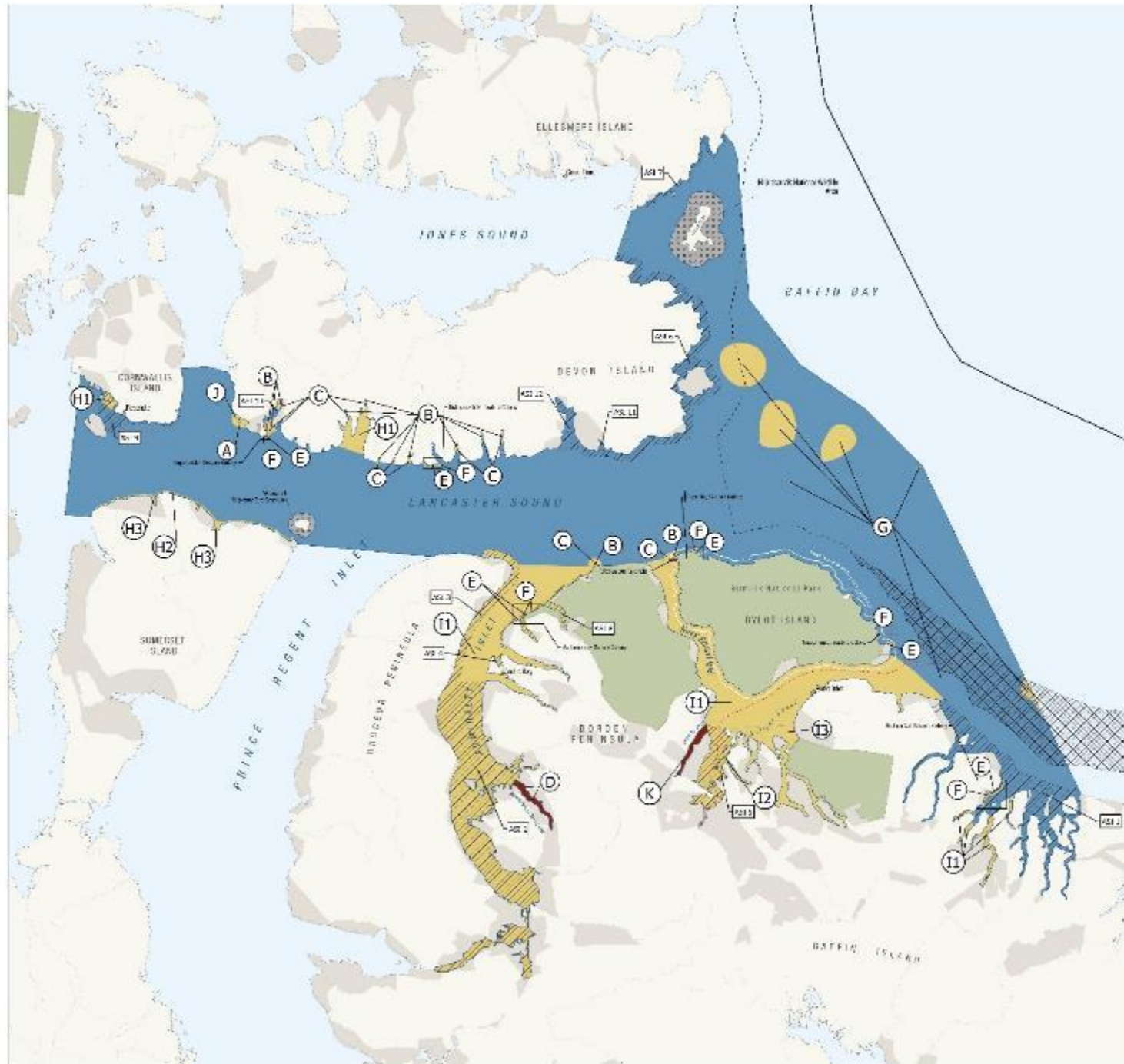
Ice Zoning  
Plan  
November 16  
to July 20

# Exceptions to zoning

- Inuit traditional use and access not affected
- National security or sovereignty, defense, law enforcement activities
- Safety and emergency response activities
- Community resupply
- Vessels engaged in innocent passage without stopping



# OPEN WATER SEASON

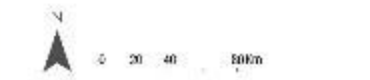


## Open Water Season (July 21 - November 15)

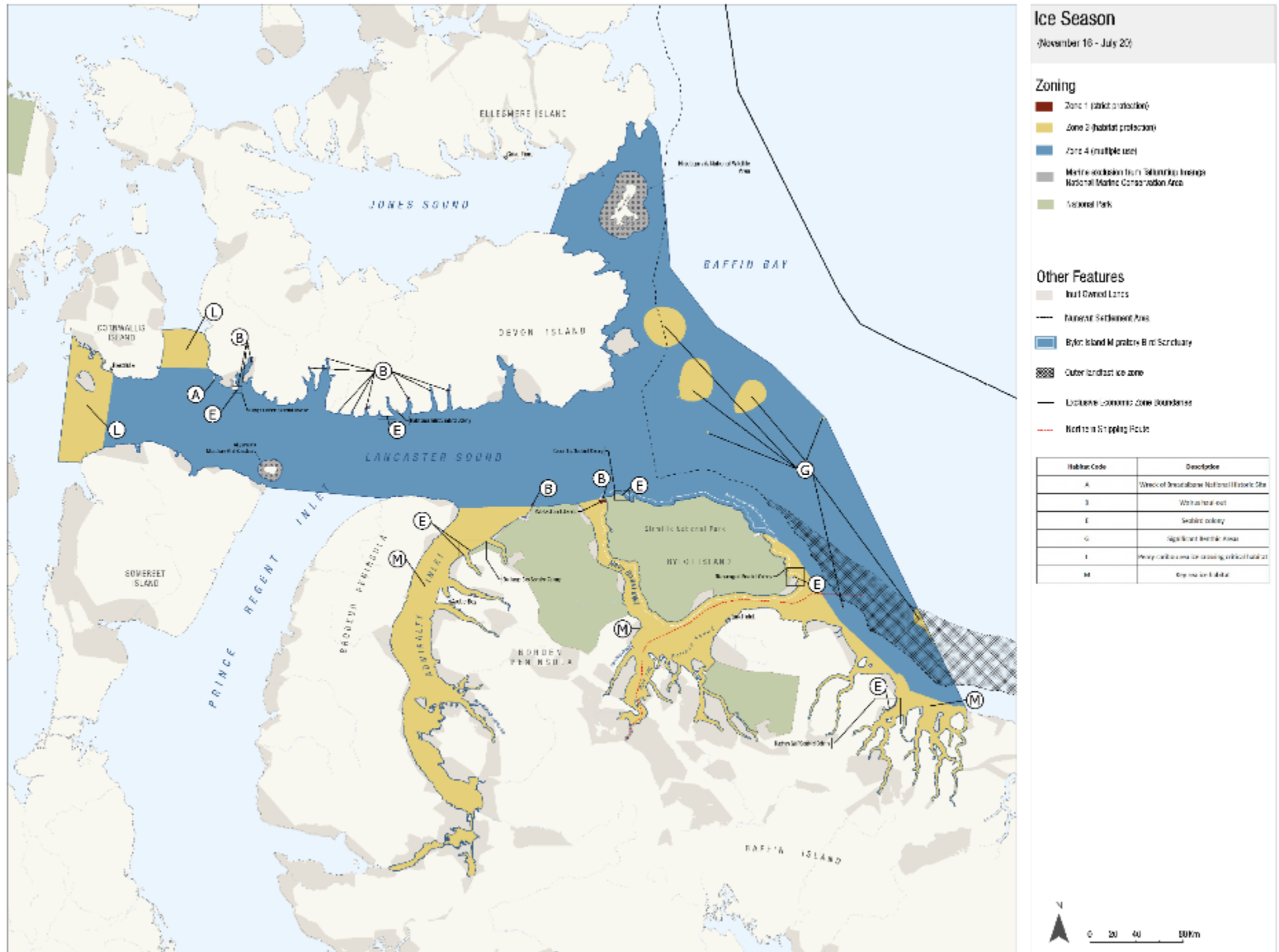
- ### Zoning
- Zone 1 (park protection)
  - Zone 2 (habitat protection)
  - Zone 4 (multiple uses)
  - Area of special importance to communities (ASIC)
  - Marine protected area (Tulavutlu Inuugaq National Marine Conservation Area)
  - National Park

- ### Other Features
- Inuit Owned Land
  - Nunavut Ecosystem Area
  - Byler Island Migratory Bird Sanctuary
  - Open Inshore Areas
  - Exclusive Economic Zone Boundary
  - Arctic Shipping Route

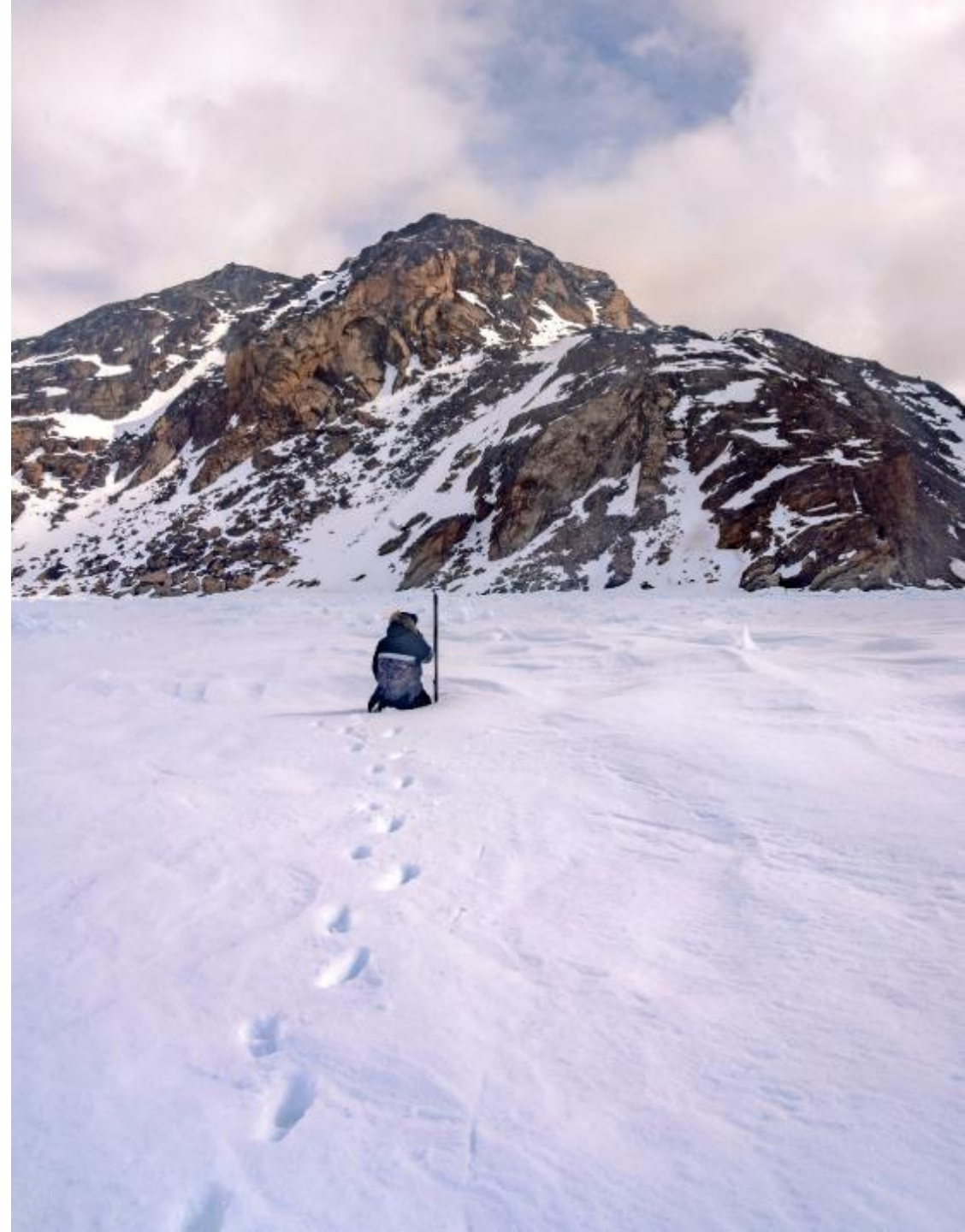
Map Code	Description
A	Winnipeg Harbour National Historic Site
B	Winnipeg Harbour
C	Winnipeg Harbour
D	Winnipeg Harbour
E	Winnipeg Harbour
F	Winnipeg Harbour
G	Winnipeg Harbour
H1, H2, H3	Winnipeg Harbour
I1, I2, I3	Winnipeg Harbour
J	Winnipeg Harbour
K	Winnipeg Harbour



# ICE SEASON



# Zoning Walk Through

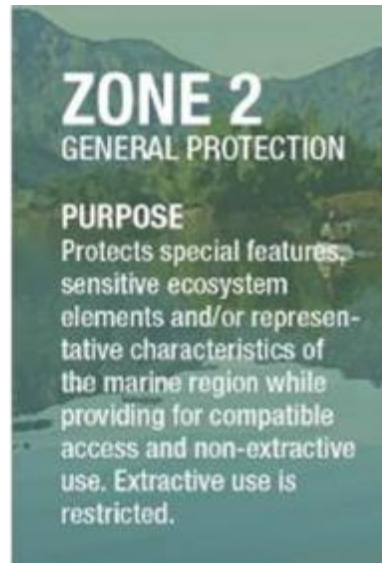


# Zoning

A vertical rectangular panel with a brownish-orange background. At the bottom, there is a photograph of a dolphin leaping from the water.

**ZONE 1**  
STRICT PROTECTION

**PURPOSE**  
Strictly protects special features and/or sensitive ecosystem elements that may be susceptible to disturbance. Access and extractive use are restricted.

A vertical rectangular panel with a greenish-blue background. At the bottom, there is a photograph of a coastal landscape with mountains and a body of water.

**ZONE 2**  
GENERAL PROTECTION

**PURPOSE**  
Protects special features, sensitive ecosystem elements and/or representative characteristics of the marine region while providing for compatible access and non-extractive use. Extractive use is restricted.

A vertical rectangular panel with a blue background. At the bottom, there is a photograph of a small boat on the water.

**ZONE 3**  
HABITAT PROTECTION

**PURPOSE**  
Protects specific habitats while providing for compatible access and extractive uses. Some uses are restricted to support specific habitat conservation objectives.

A vertical rectangular panel with a blue background. At the bottom, there is a photograph of a sailboat on the water.

**ZONE 4**  
MULTIPLE USE

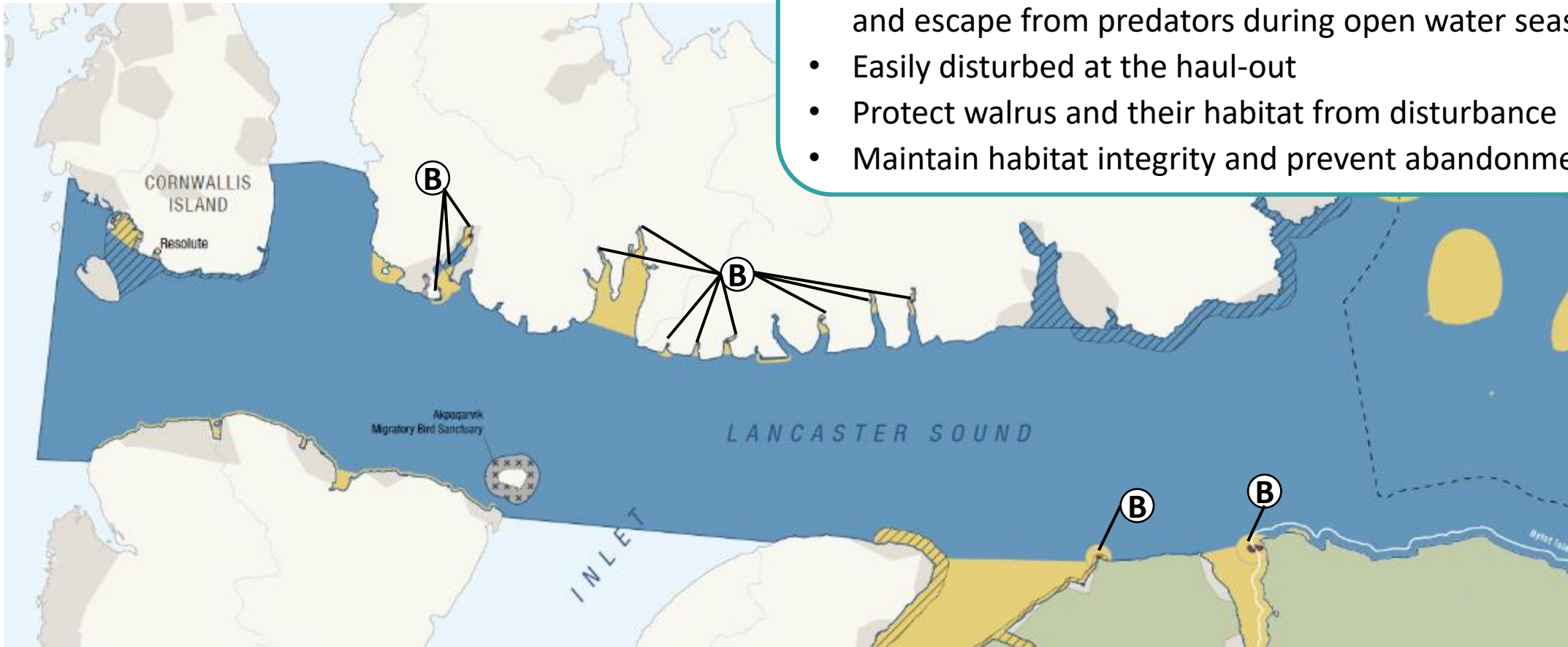
**PURPOSE**  
Sustains the greatest range of uses that do not compromise ecological sustainability, cultural resources or heritage values.

*Indigenous traditional use continues\* in all zones, consistent with Section 35 of the Constitution Act.*

# Walrus haul-outs

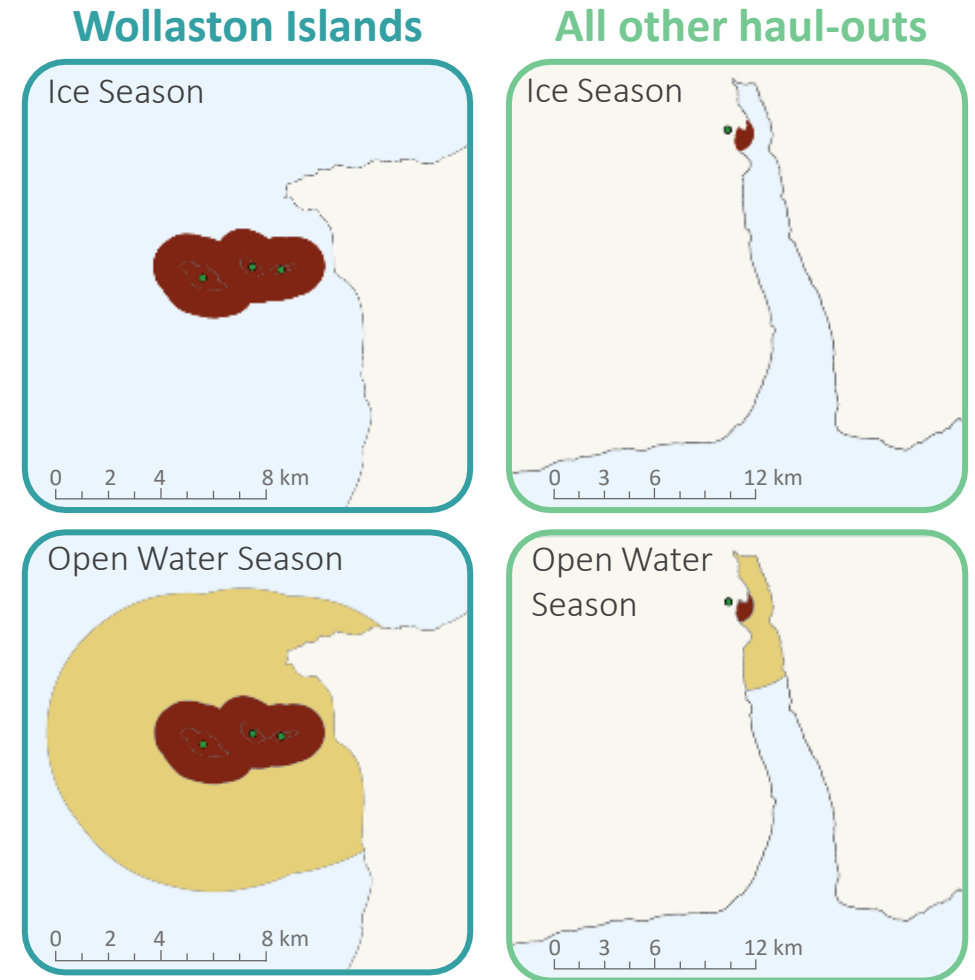
## What is protected and why

- **13** important walrus haul-out sites for resting, feeding and escape from predators during open water season
- Easily disturbed at the haul-out
- Protect walrus and their habitat from disturbance
- Maintain habitat integrity and prevent abandonment



# Walrus haul-outs

- Zoning for walrus haul-outs developed to mirror the requirements outlined in the 2023 Recommended Nunavut Land Use Plan, as recommended by the Qikiqtaaluk Wildlife Board
- **Zone 1 - Strict protection (year-round):**
  - **For Wollaston Islands:** No access on islands and in water a 1-km buffer around islands
  - **For all other haul-outs:** No access in water a 1-km buffer around haul-out
  - Some research and monitoring allowed
  - **Harvesting restrictions:** All non-Inuit\* harvesting prohibited in area
- **Zone 3 - Open water habitat protection:**
  - Buffer extending additional 4 km seawards
  - Prohibits commercial shipping, commercial and recreational fishing
  - Restriction based on vessel size for recreational and commercial tourism (see next slide)
  - Prohibits flying an aircraft at an altitude < 5 000 ft
  - Exceptions for research may apply though permitting process
  - **Harvesting restrictions:** All non-Inuit\* harvesting prohibited in area



\* Inuit traditional use, including hunting, fishing, trapping, and gathering **can continue** in all areas and zones of Tallurutiup Imanga NMCA

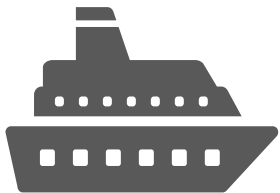
# Walrus haul-outs



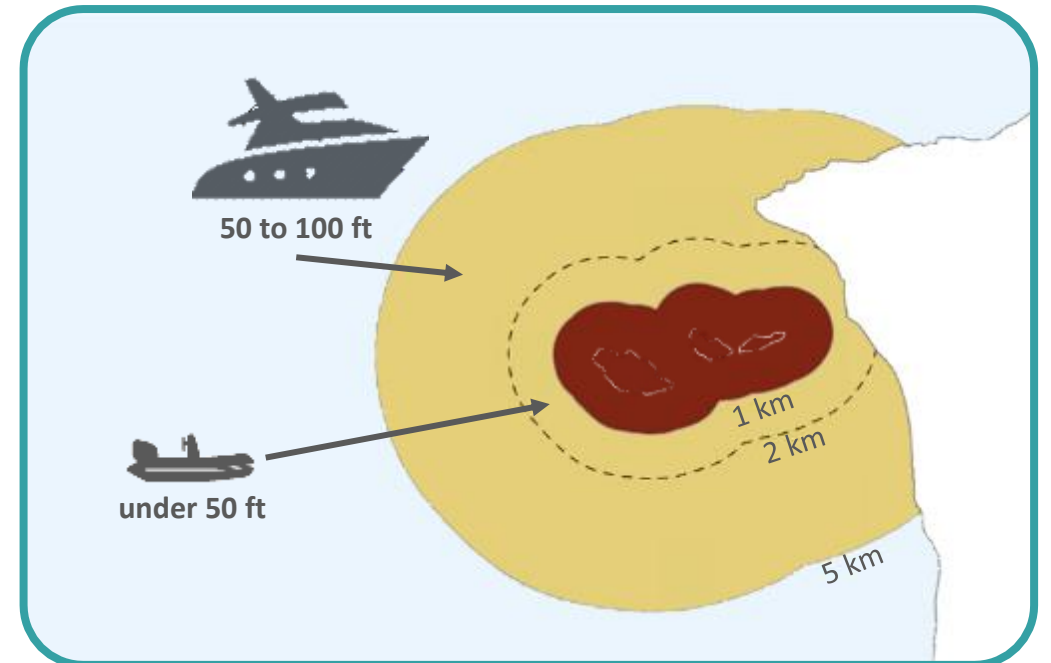
- **< 50 ft:** may navigate anywhere within the zone 3 area (e.g. kayaks, zodiacs)



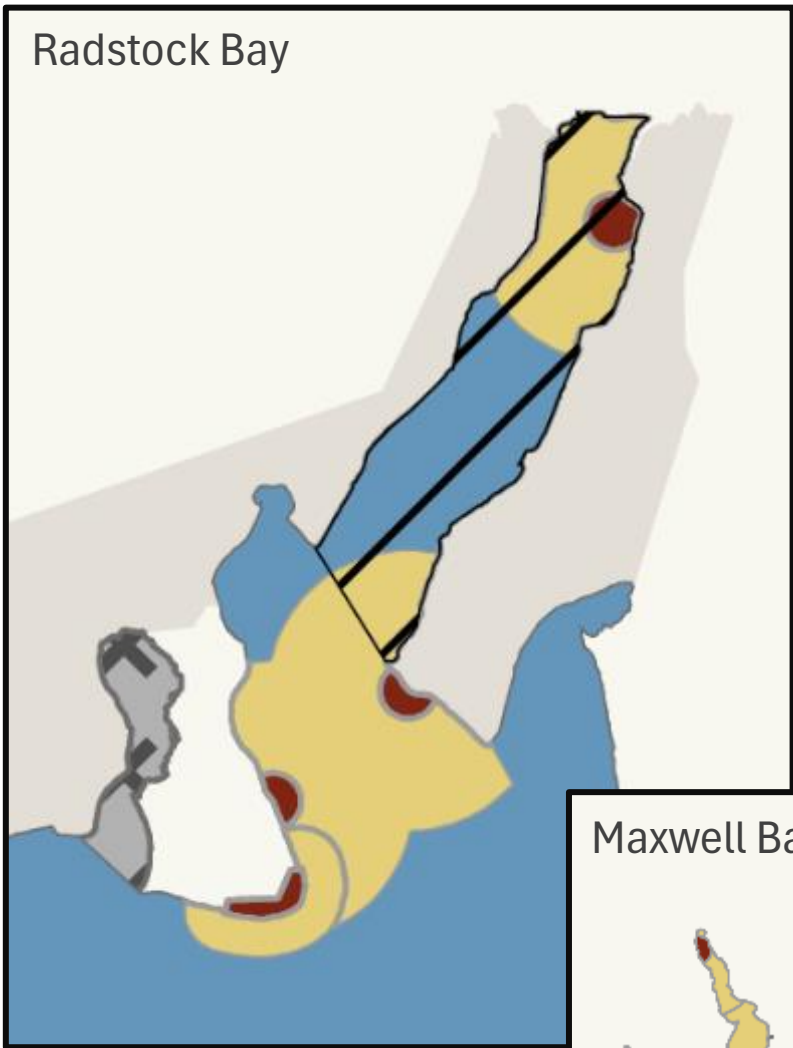
- **50 - 100 ft:** may enter the zone 3 area but must always remain at least 2 km from the haul-out



- **>100 ft:** prohibited from accessing or transiting through these zone 3 areas



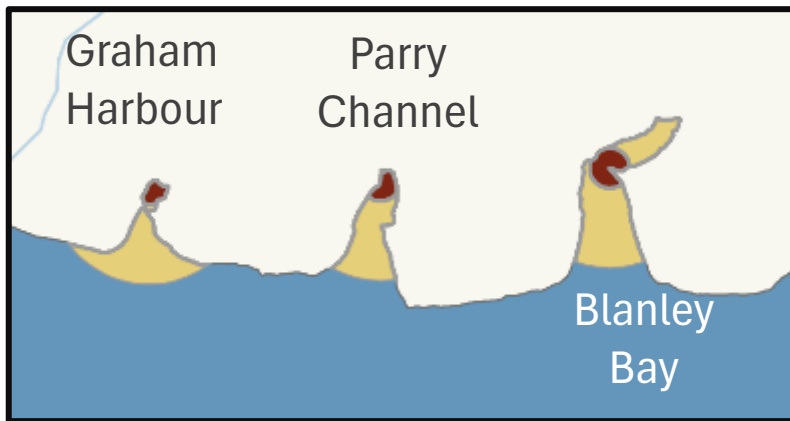
Radstock Bay



Graham Harbour

Parry Channel

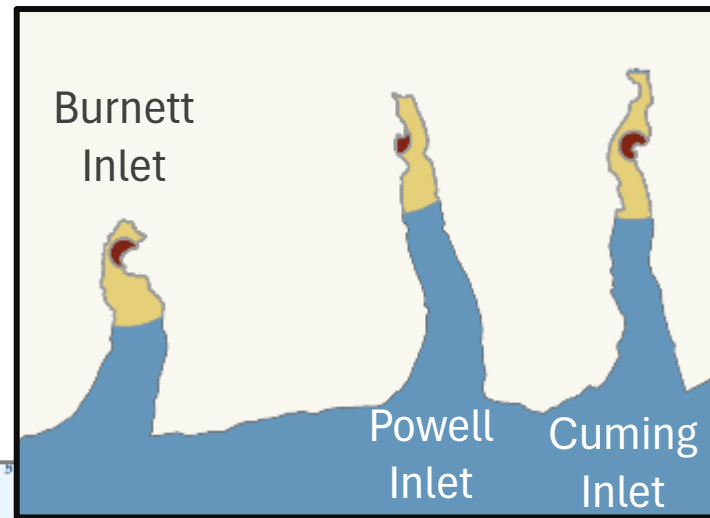
Blanley Bay



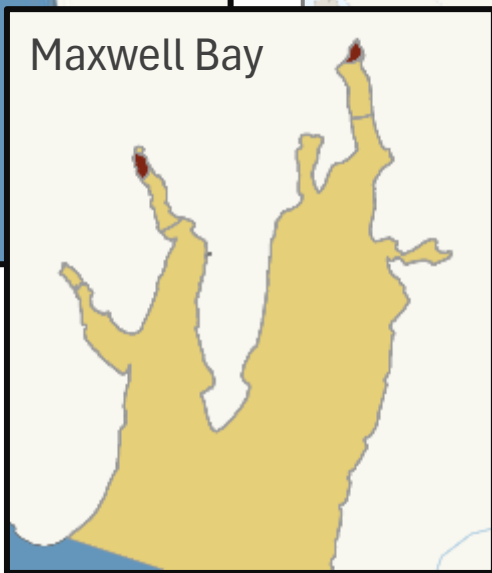
Burnett Inlet

Powell Inlet

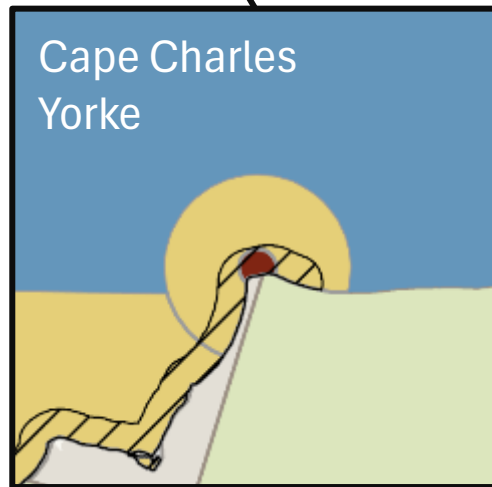
Cuming Inlet



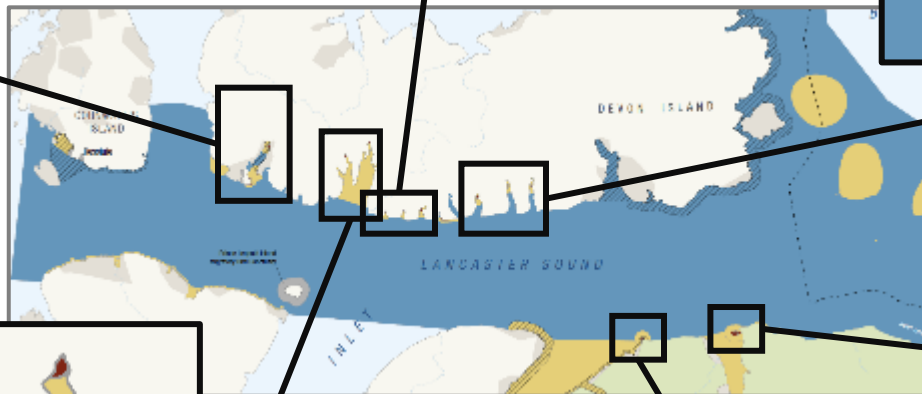
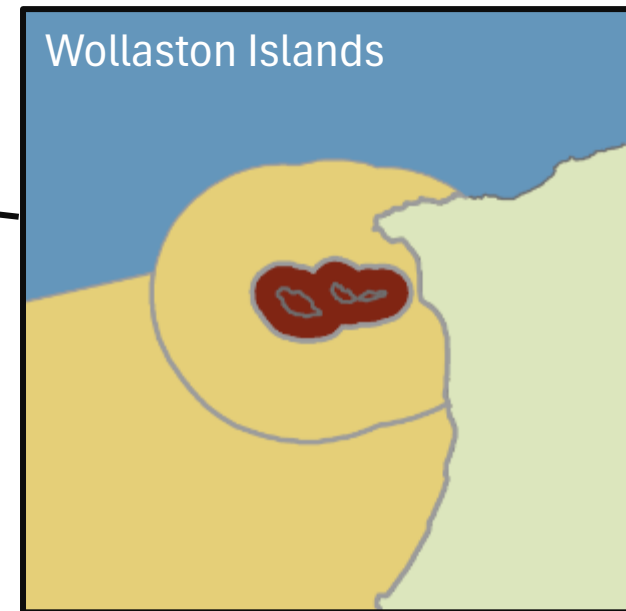
Maxwell Bay



Cape Charles Yorke



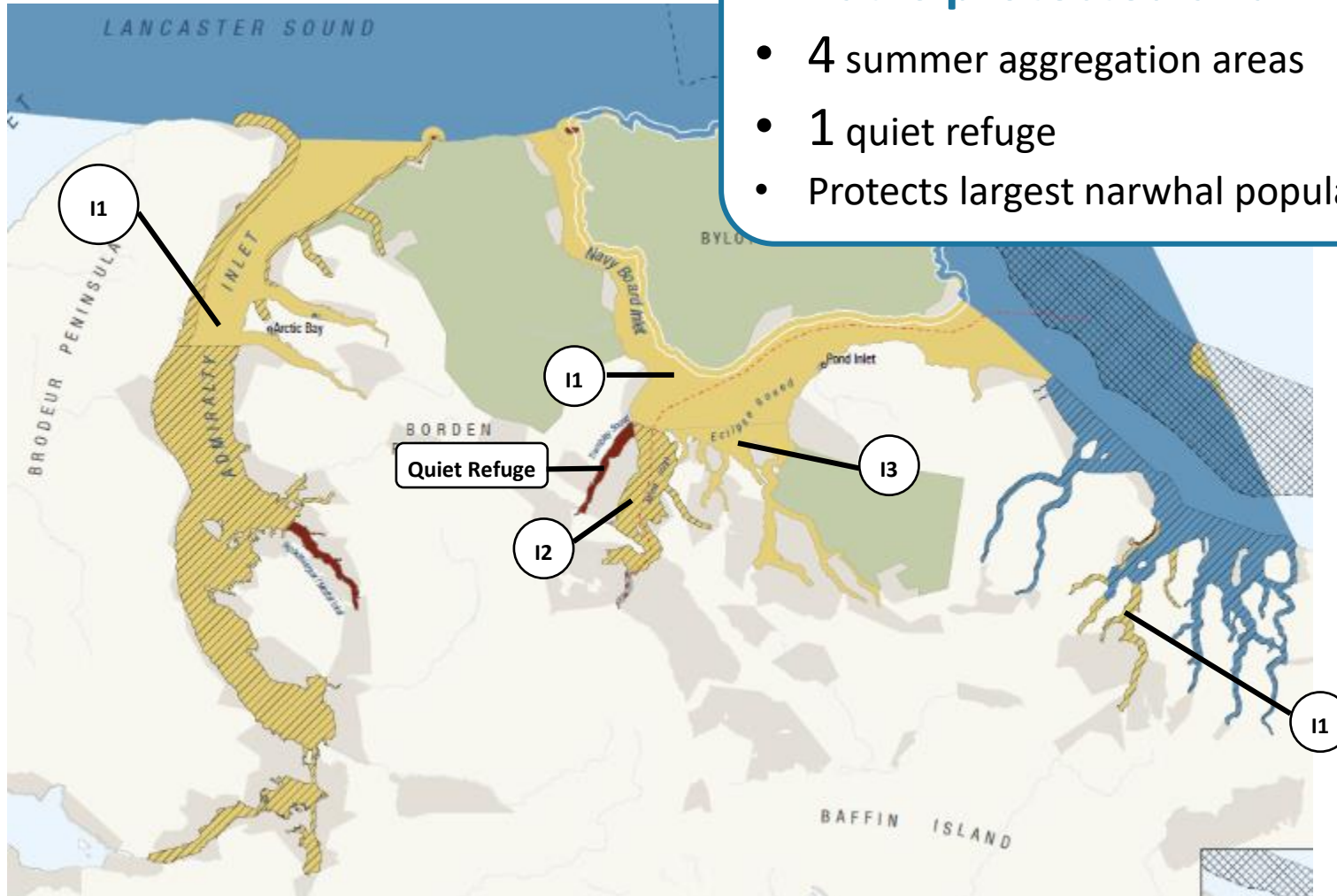
Wollaston Islands



# Narwhal habitat

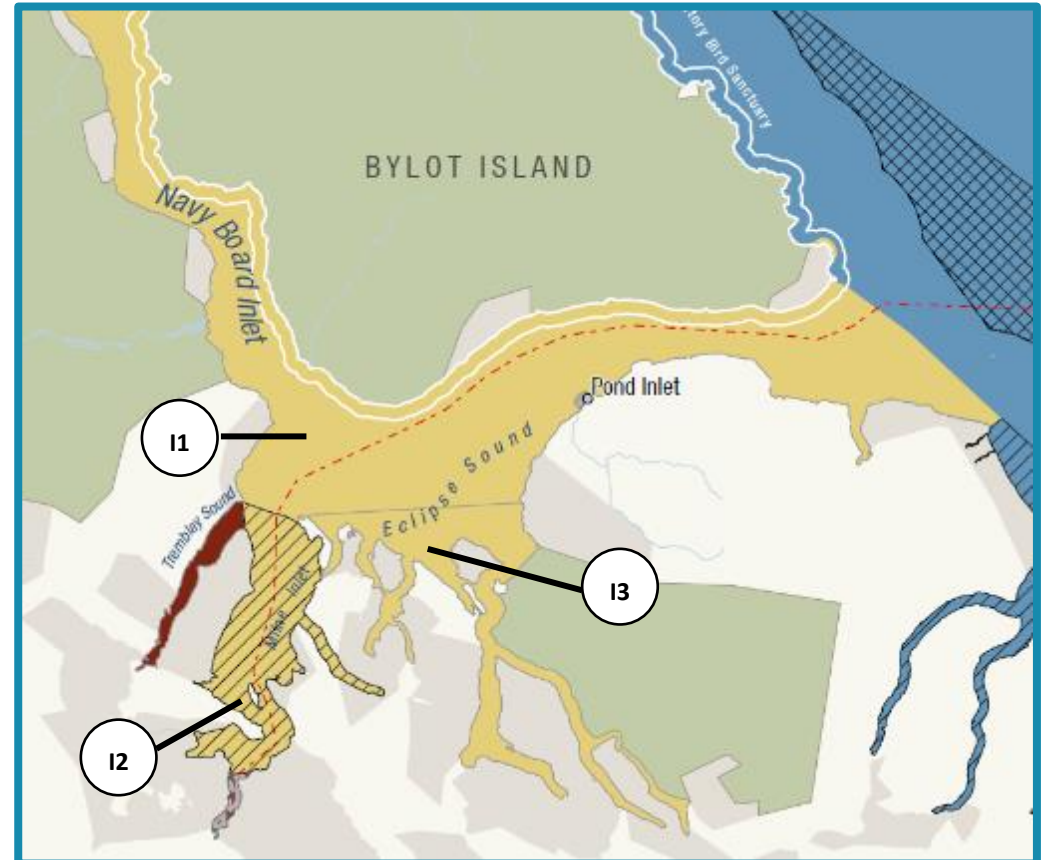
## What is protected and why

- 4 summer aggregation areas
- 1 quiet refuge
- Protects largest narwhal population in the world

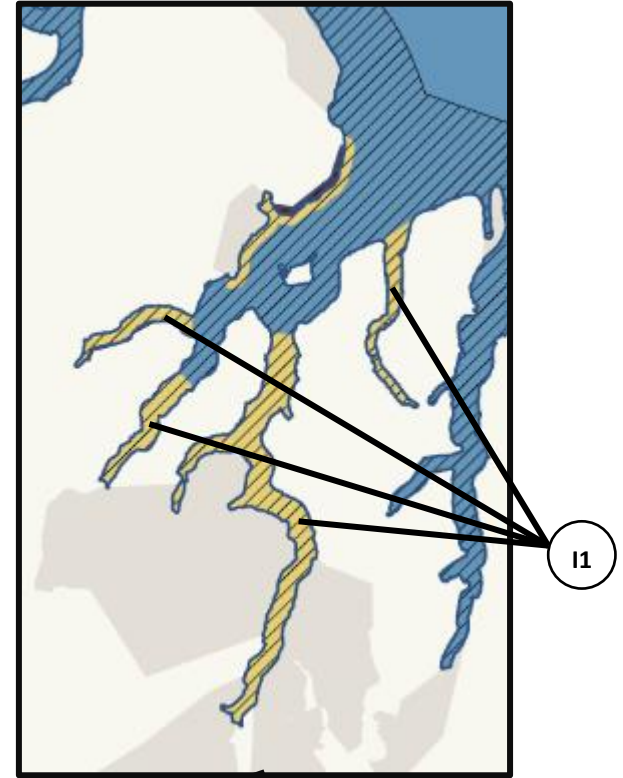
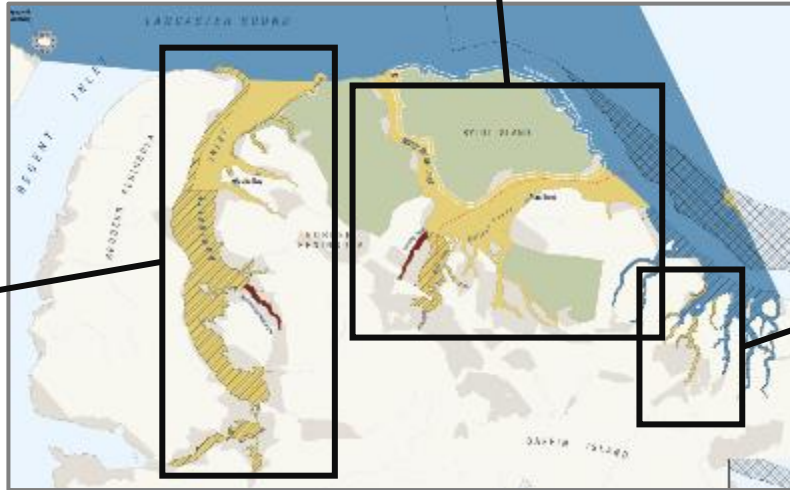
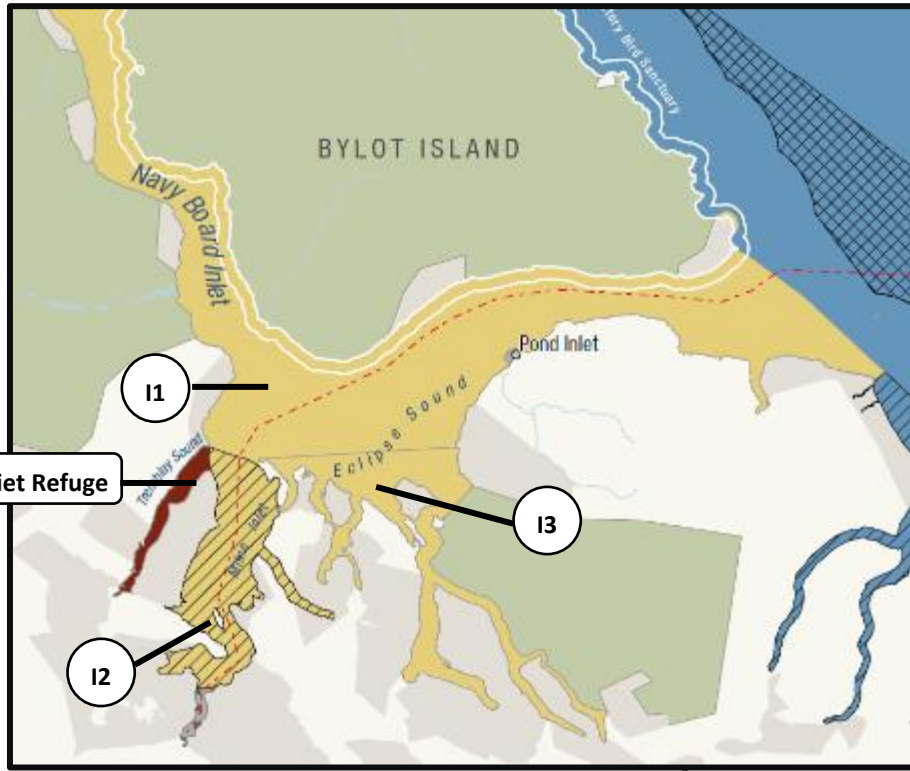
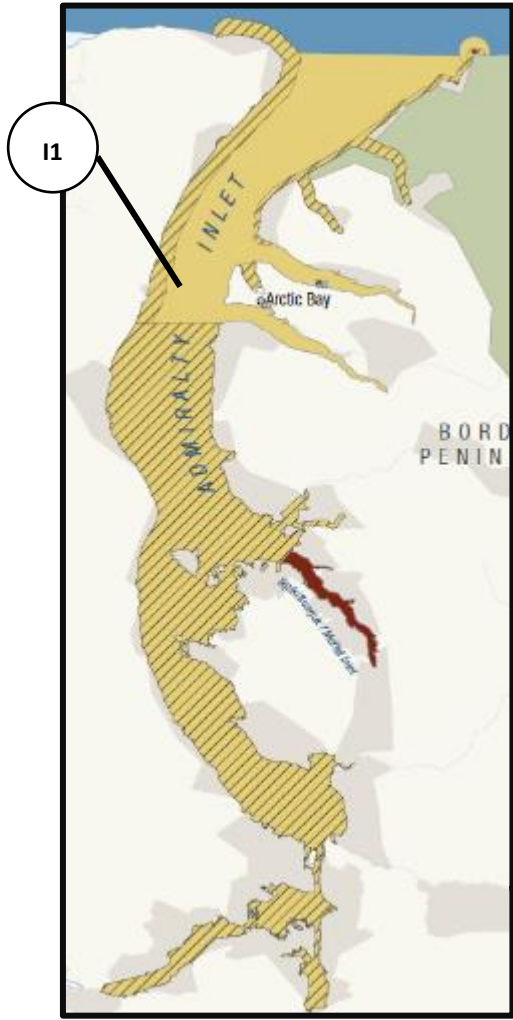


# Narwhal habitat

- **Zone 1 - Strict protection:**
  - No access to Trembley Sound during open water season; quiet refuge
  - Some research and monitoring allowed
  - **Harvesting restrictions:** All non-Inuit\* harvesting prohibited in area
- **Zone 3 - Open water habitat protection:**
  - Speed limit of 9 knots for all vessels over 300 tons
  - Cruise ships prohibited in Milne Inlet (I2) and southern fiords of Eclipse Sound (I3)
  - Commercial ships prohibited in southern fiords of Eclipse Sound (I3)
  - **Harvesting restrictions:** All non-Inuit\* bottom contact fishing gear is prohibited in area



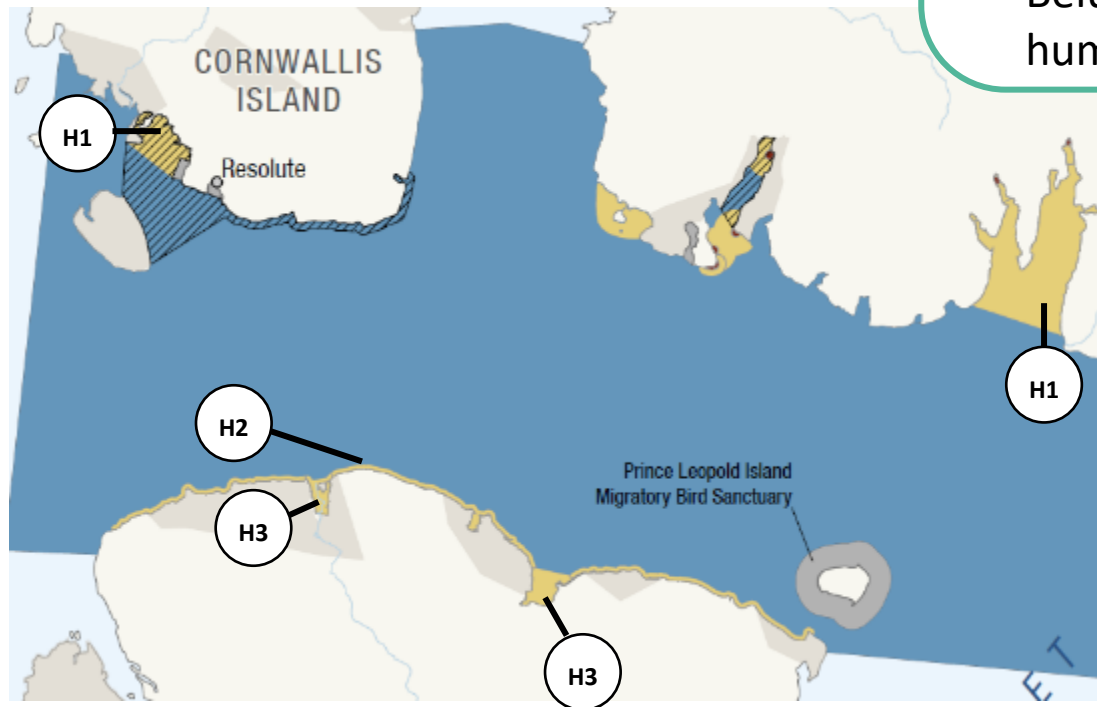
\* Inuit traditional use, including hunting, fishing, trapping, and gathering **can continue** in all areas and zones of Tallurutiup Imanga NMCA



# Beluga habitat

## What is protected and why

- 4 shallow estuaries known to be important beluga nursery and molting grounds used yearly
- 1-km strip stretching along the entire northern coast of Somerset Island, and important aggregation area
- Belugas are disturbed by underwater noise from some human activities



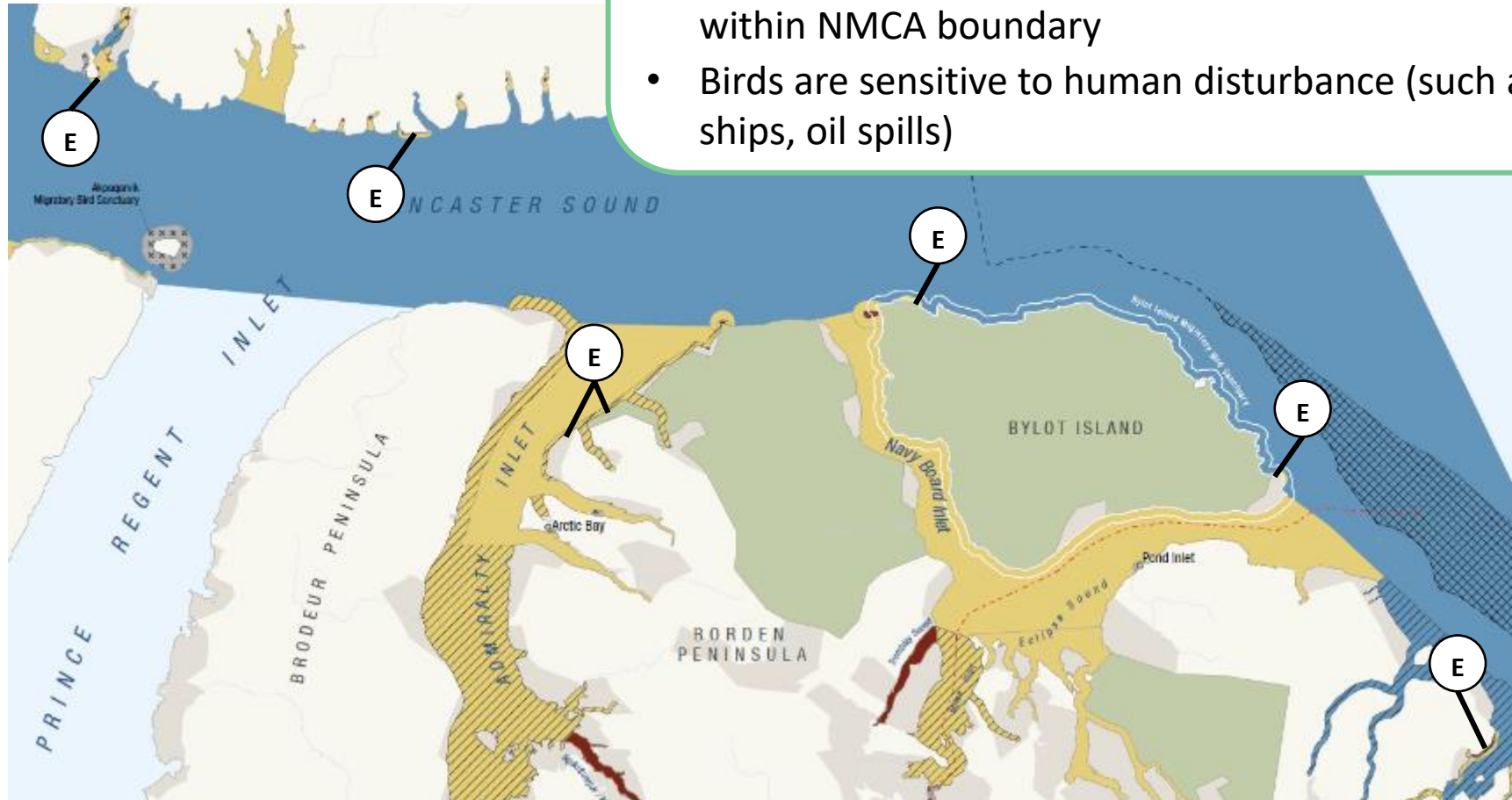
## Zone 3 - Open water habitat protection:

- Prohibits flying an aircraft at an altitude < 5 000 ft
- No commercial shipping
- No commercial fisheries
- No new of coastal or in-water infrastructure (H1 & H3)
- H3 – Kippaarittuq/Cunningham Inlet and Garnier Bay
  - No motorized access
- H1 – Maxwell Bay and Allen Bay
  - Motorized access for tourism and recreation allowed
- H2 – Northern coast of Somerset Island
  - Motorized access for small vessels only
  - Small scale coastal and in-water infrastructure for tourism or recreation allowed
- **Harvesting restrictions:** Non-Inuit\* hunting, gathering, trapping as well as commercial fishing prohibited in area

# Seabird colonies

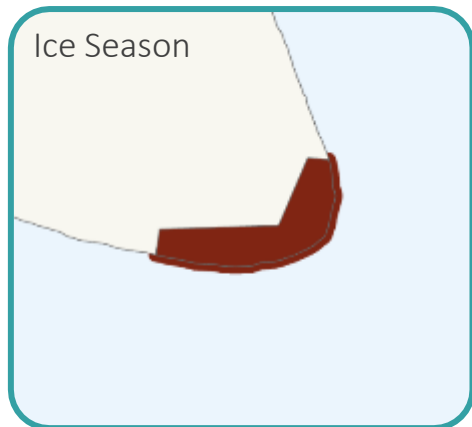
## What is protected and why

- 6 key migratory bird habitat sites for nesting, chick rearing, and foraging
- For 3 of these sites, terrestrial coastal cliffs included within NMCA boundary
- Birds are sensitive to human disturbance (such as from ships, oil spills)

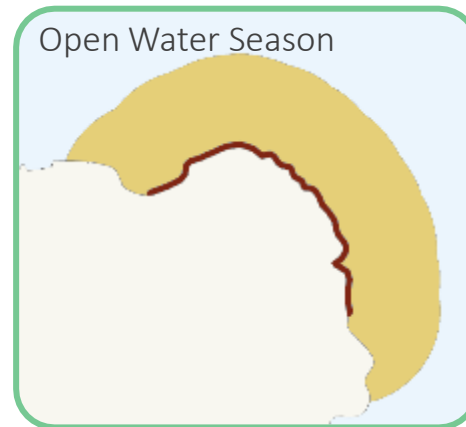
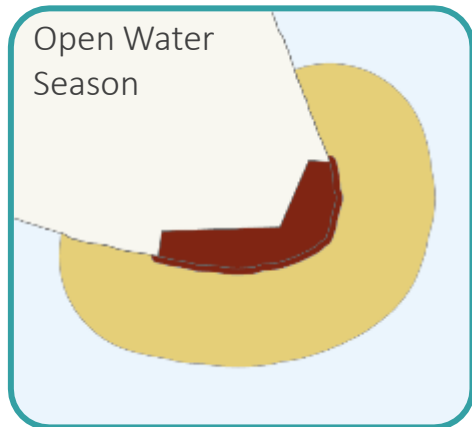


# Seabird colonies

## Terrestrial colony Included in NMCA



## Terrestrial colony Excluded from NMCA



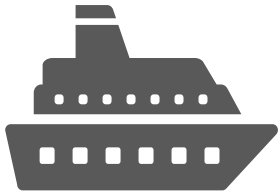
- **Zone 1 - Strict protection:**
  - No access to 100-m buffer from cliff for all 6 sites
  - No access to 3 nesting cliffs located within NMCA boundary
  - Some research and monitoring allowed
  - **Harvesting restrictions:** All non-Inuit\* harvesting prohibited in area
- **Zone 3 - Open water habitat protection:**
  - Buffer extending additional 1.5 km seawards
  - Prohibits commercial fishing, commercial shipping and transiting vessels
  - Restriction based on vessel size for recreational and commercial tourism, and recreational fishing (see next slide)
  - 500-m setback for community resupply vessels when birds present
  - Prohibits flying an aircraft at an altitude < 3 500 ft
  - Additional aerial, marine and terrestrial migratory bird setbacks may apply
  - **Harvesting restrictions:** Non-Inuit\* hunting, gathering, trapping as well as commercial fishing prohibited in area

\* Inuit traditional use, including hunting, fishing, trapping, and gathering **can continue** in all areas and zones of Tallurutiup Imanga NMCA

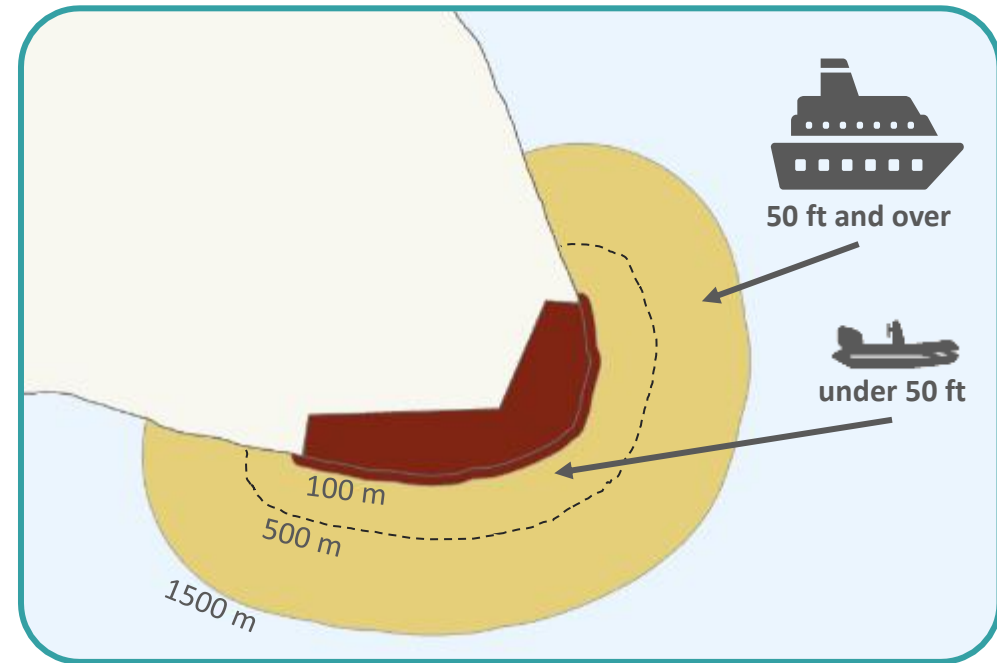
# Seabird colonies

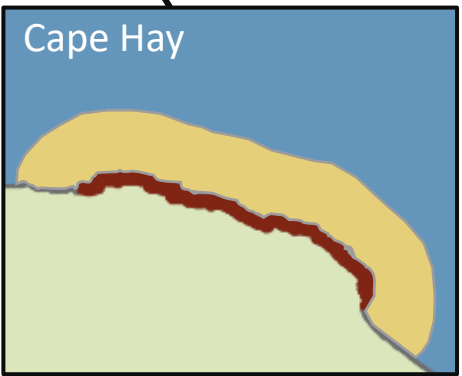
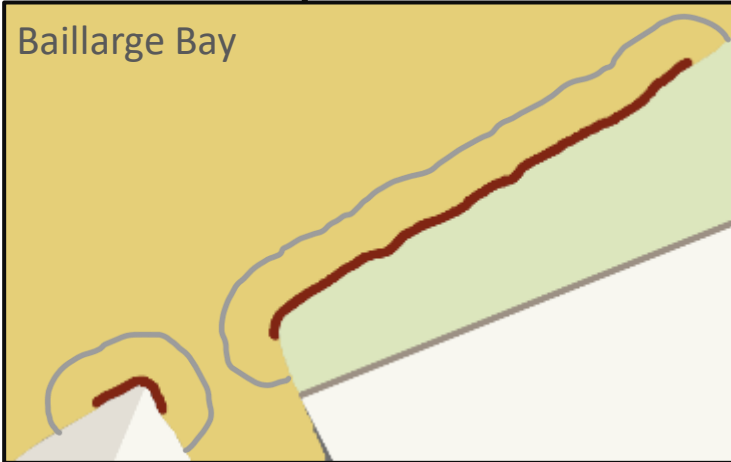
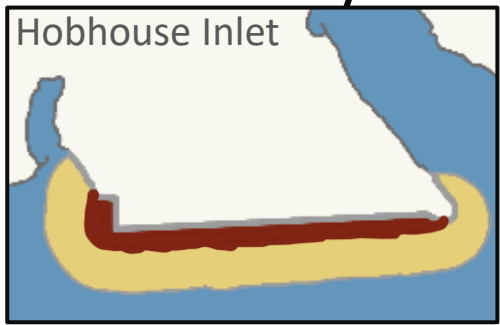
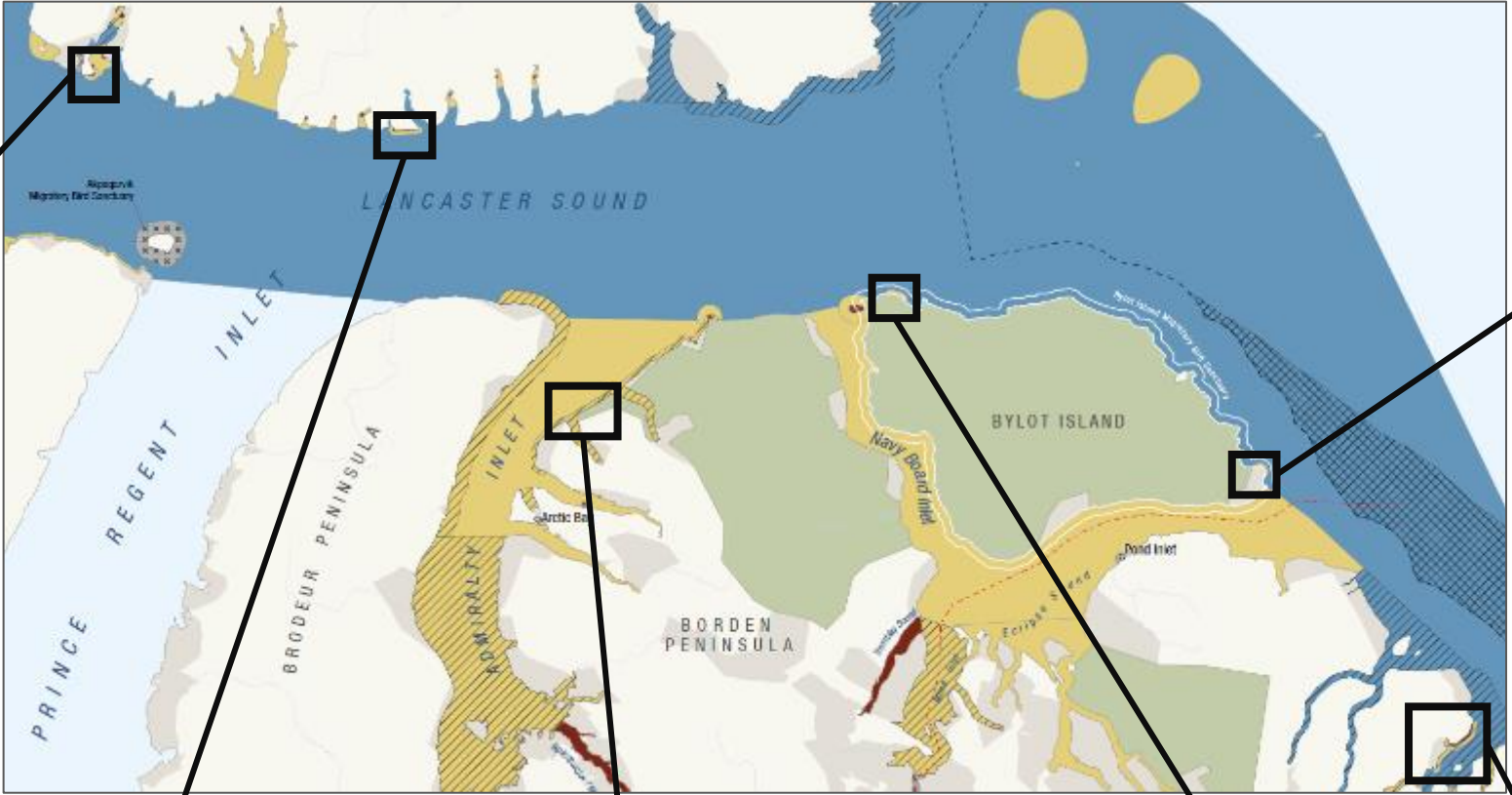
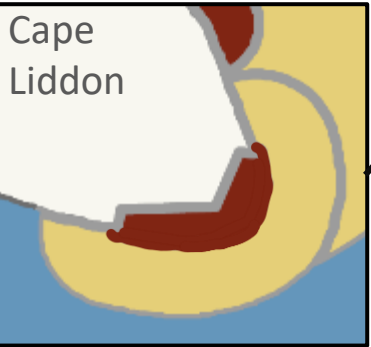


- **< 50 ft:** may navigate anywhere within the zone 3 area (e.g. kayaks, zodiacs)

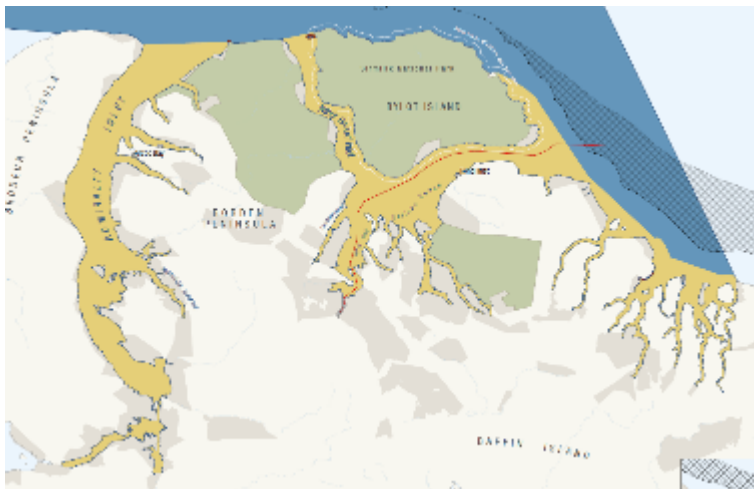
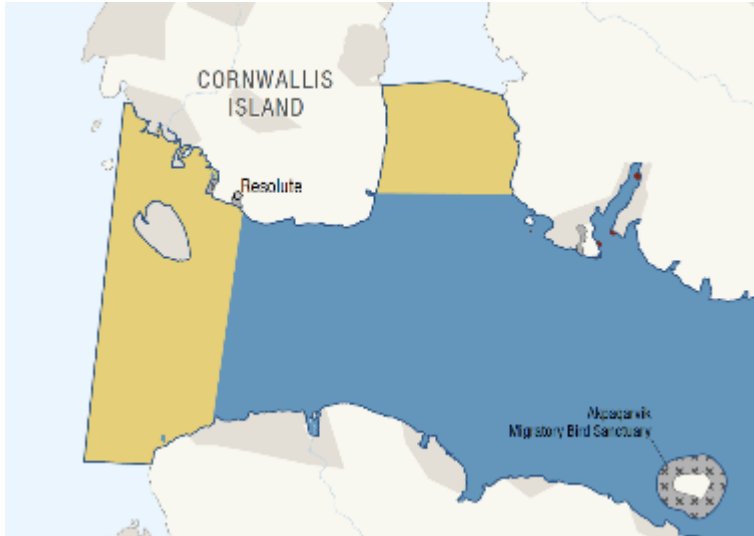


- **> 50 ft:** authorized commercial tourism vessels (e.g. cruise ships) may enter zone 3 area but must always remain at least 500 m from the colony





# Sea ice habitat



## What is protected and why

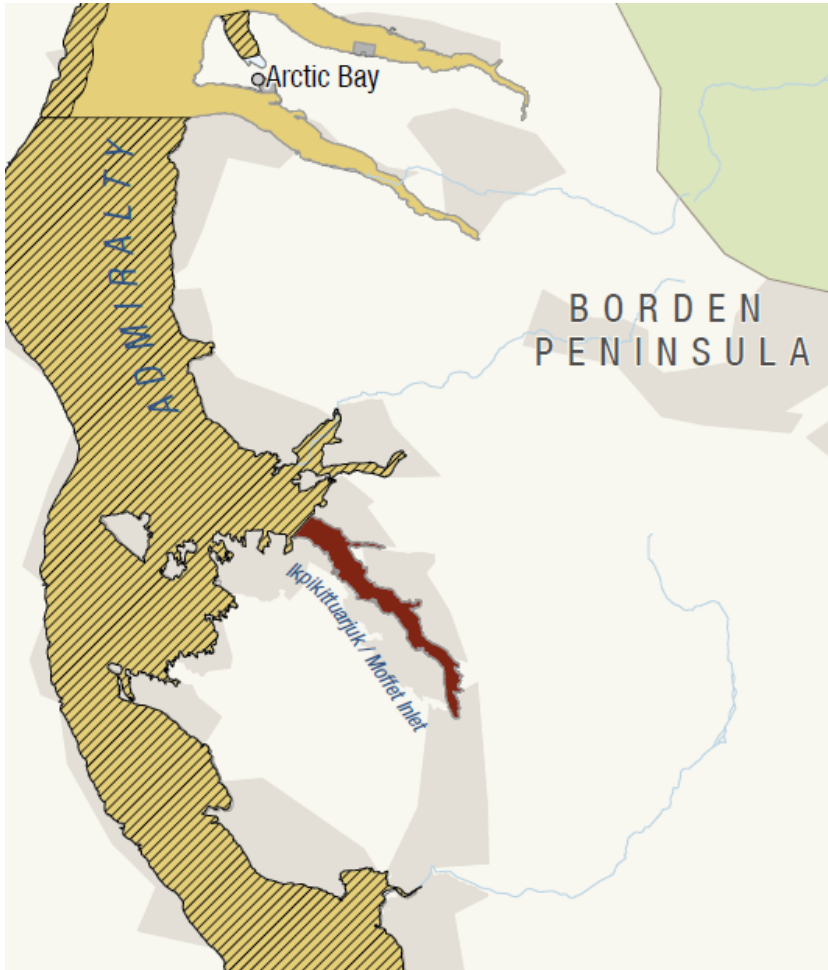
- Peary caribou ice crossings (critical habitat)
- Important habitat for wildlife (e.g., seals, polar bears)
- Valued by communities as on-ice travel routes and hunting grounds

## Zone 3 – Ice season habitat protection:

- All shipping and cruise ship activity is prohibited from Nov. 16 to Jul. 20 except for:
  1. General exceptions to zoning\*; and
  2. Shipping activity in project approved on or before the date Tallurutiup Imanga is established (project certificate terms and conditions apply)
  3. Valid conservation reasons that are assessed on a case-by-case basis (for example to free trapped whales).
- The dates the prohibition apply may be varied under certain conditions
- **Harvesting restrictions:** Bottom contact fishing gear is prohibited in area

\* Inuit traditional use and access; National security or sovereignty, defense, law enforcement activities; Safety and emergency response activities; Community resupply; Vessels engaged in innocent passage without stopping

# Ikpikittuarjuk / Moffet Inlet



## What is protected and why

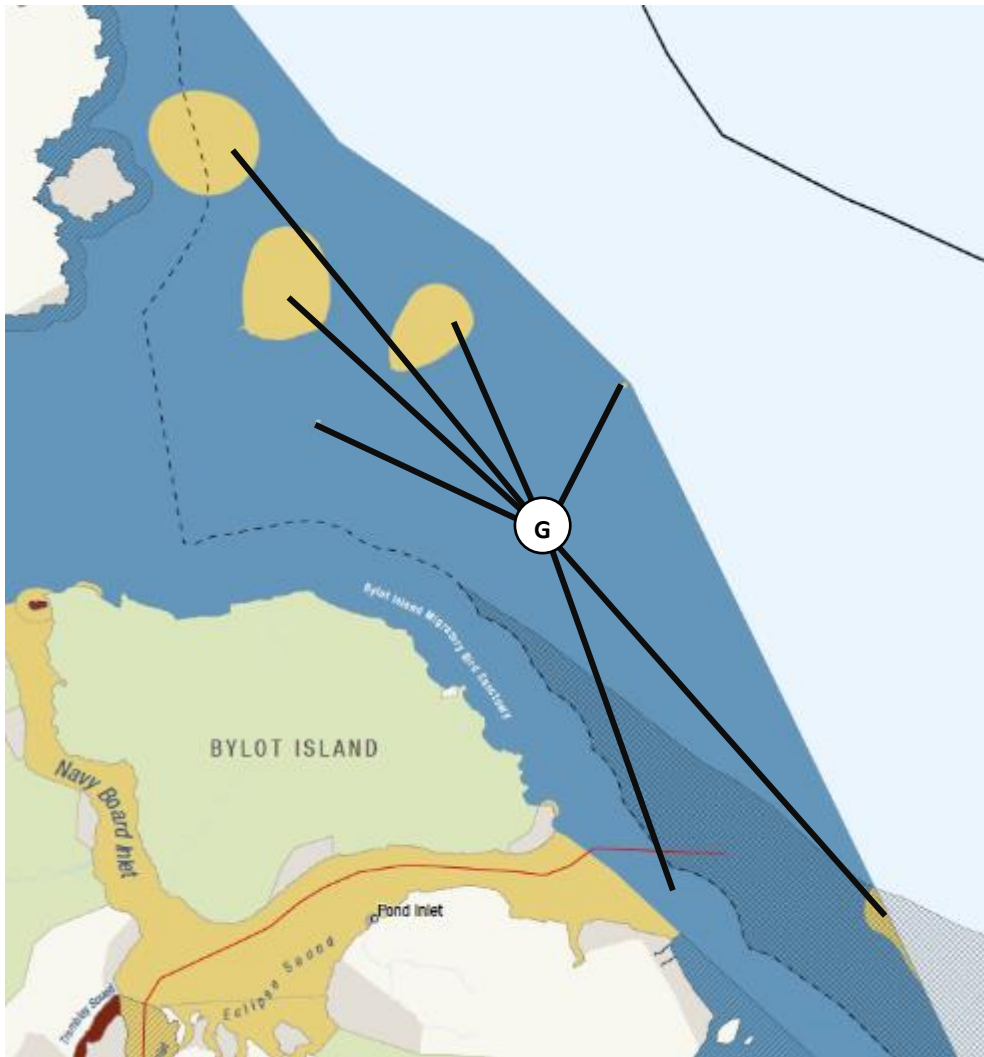
- Valued by local communities
- Abundance of bowhead, narwal, walrus and char
- Concern around decline in char population

## Zone 1 - Strict protection:

- No access during open water season
- Some research allowed
- **Harvesting restrictions:** All non-Inuit\* harvesting prohibited in area

\* Inuit traditional use, including hunting, fishing, trapping, and gathering **can continue** in all areas and zones of Tallurutiup Imanga NMCA

# Significant benthic Areas



## What is protected and why

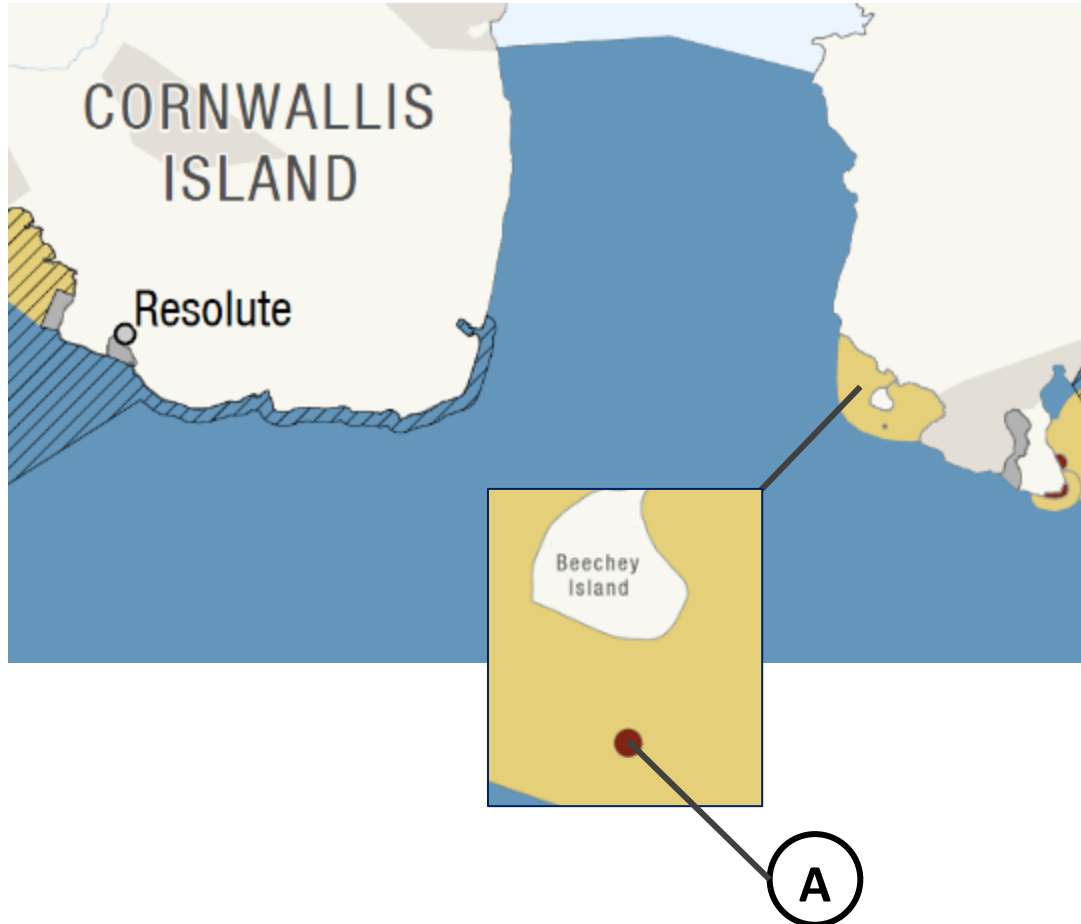
- 7 important sea floor habitat areas for many species
- Special habitat due to sea pens, a type of coral
- Disturbing the sea floor can remove or damage these sea pens

## Zone 3 – Open water habitat protection

- No mobile bottom contact fishing gear allowed
- No infrastructure installed on the sea floor
- **Harvesting restrictions:** Bottom contact fishing gear is prohibited in area



# Wreck of Breadalbane

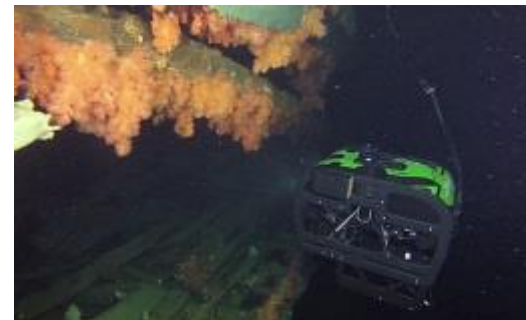


## What is protected and why

- Remains of a ship that was involved in the search for Captain John Franklin's lost expedition.
- Protect sensitive cultural resources by limiting further damage to the wreck

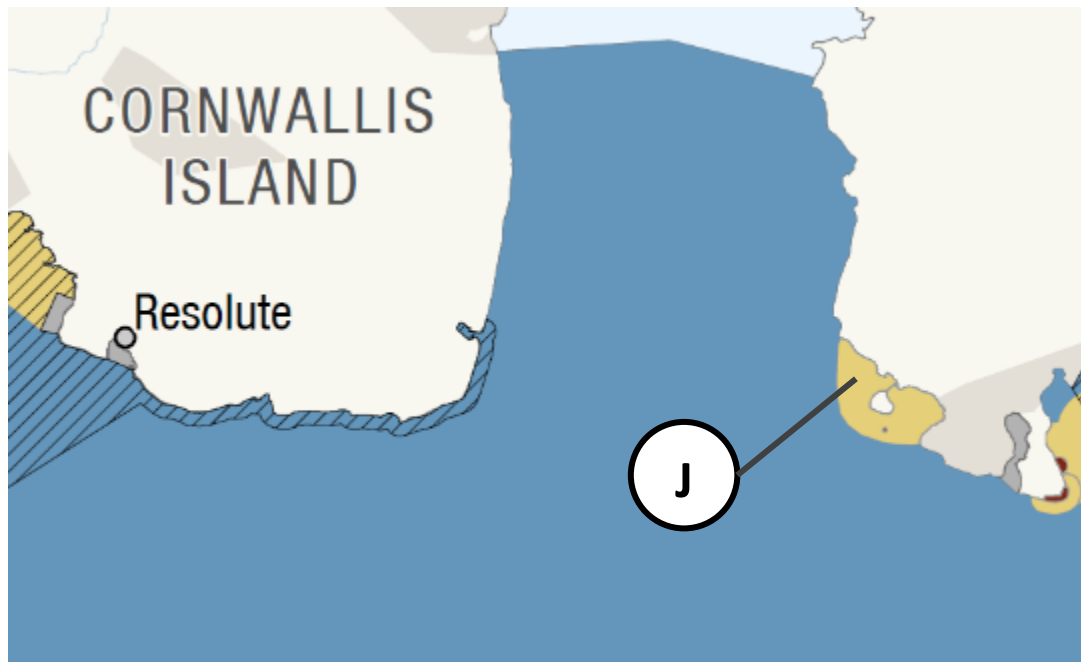
## Zone 1 - Strict protection:

- No access 250-m radius circle centered on the mid-point of the hull
- Mobile bottom contact gear prohibited
- **Harvesting restrictions:** All non-Inuit\* harvesting prohibited in area



\* Inuit traditional use, including hunting, fishing, trapping, and gathering **can continue** in all areas and zones of Tallurutiup Imanga NMCA

# Underwater cultural resource area



## What is protected and why

- Known cultural resources in the shallow waters surrounding Beechey Island
- To protect known and potential cultural resources

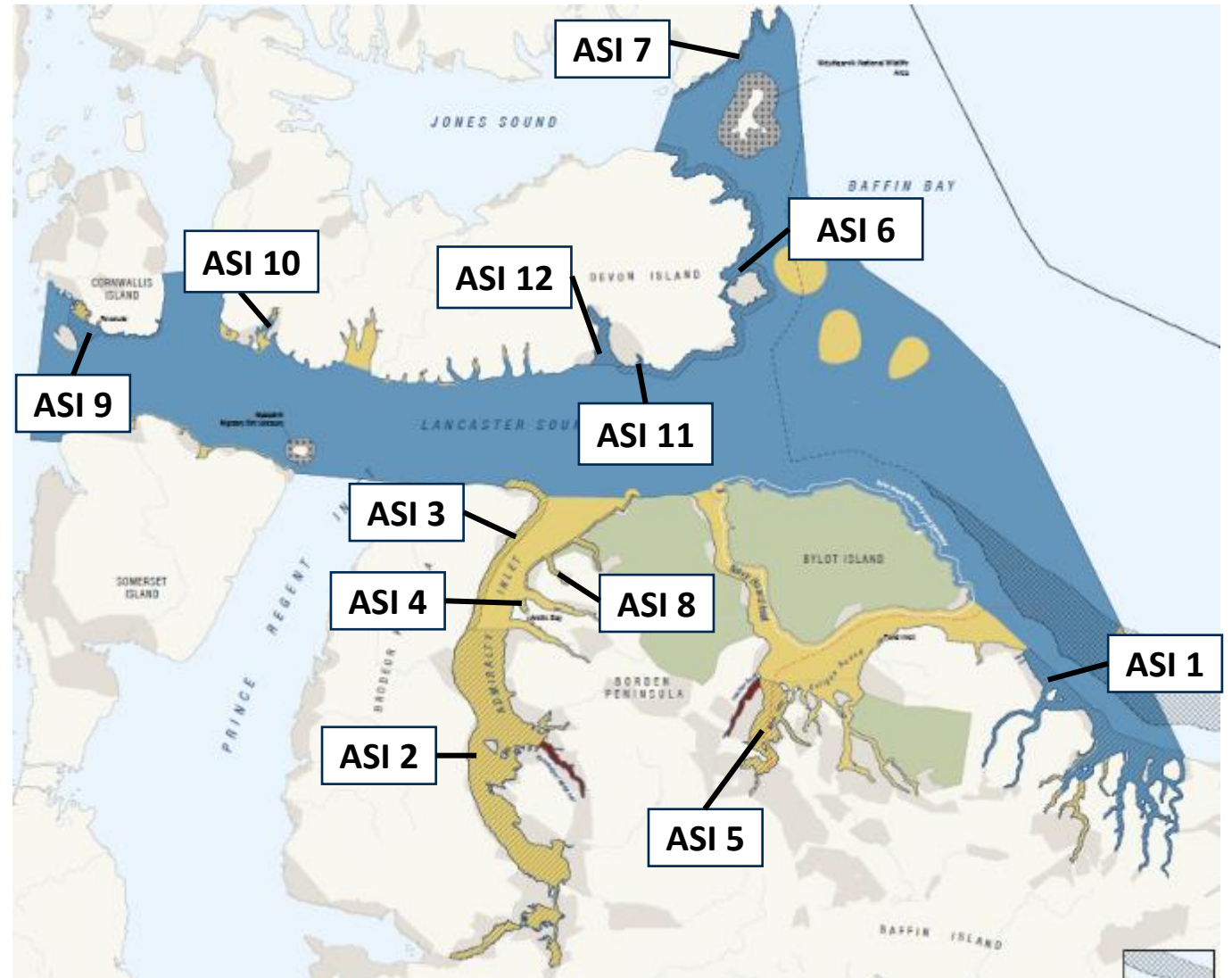
## Zone 3 – Open water habitat protection

- Diving and submersible use are prohibited
- **Harvesting restrictions:** Bottom contact fishing gear is prohibited in area

# Areas of Special Importance (ASI)

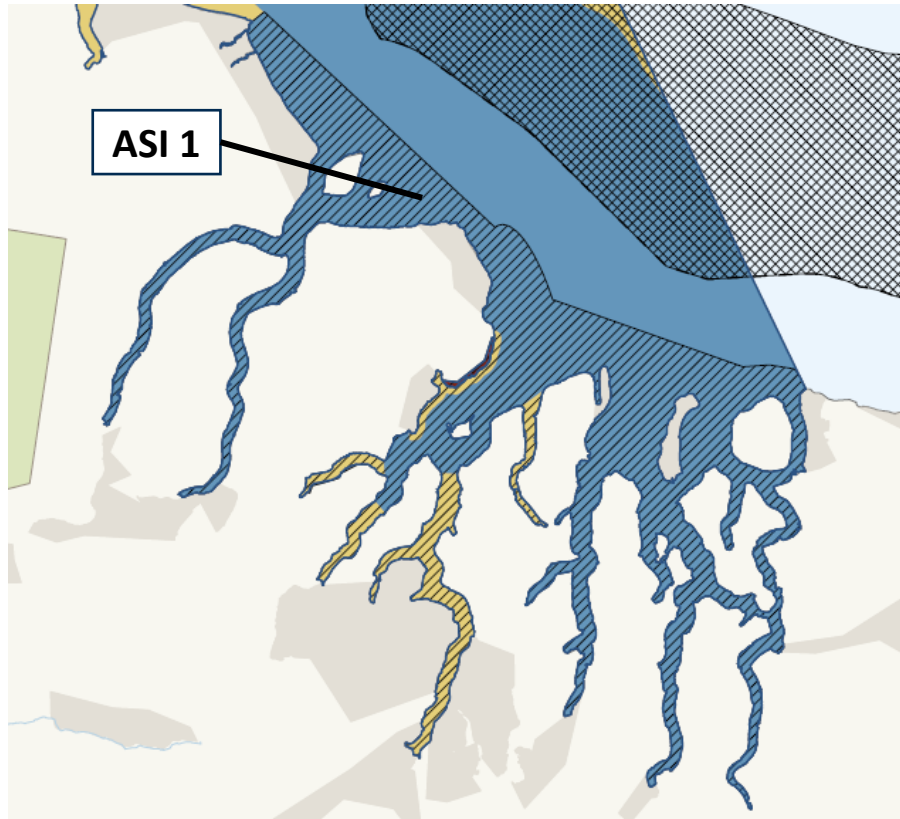
Important to Inuit cultural practices, more flexibility to adapt to changing conditions and patterns of use.

1. Fjords North of Clyde River
2. South Admiralty Inlet
3. Strip along shore of Brodeur Peninsula
4. Victor Bay
5. Milne Inlet
6. Southeast and northeast coast of Devon Island
7. Southeast coast of Ellesmere Island
8. North shore of Borden Peninsula
9. Resolute passage and Cornwallis Island coast
10. Radstock Bay
11. Dundas Harbour
12. Croker Bay



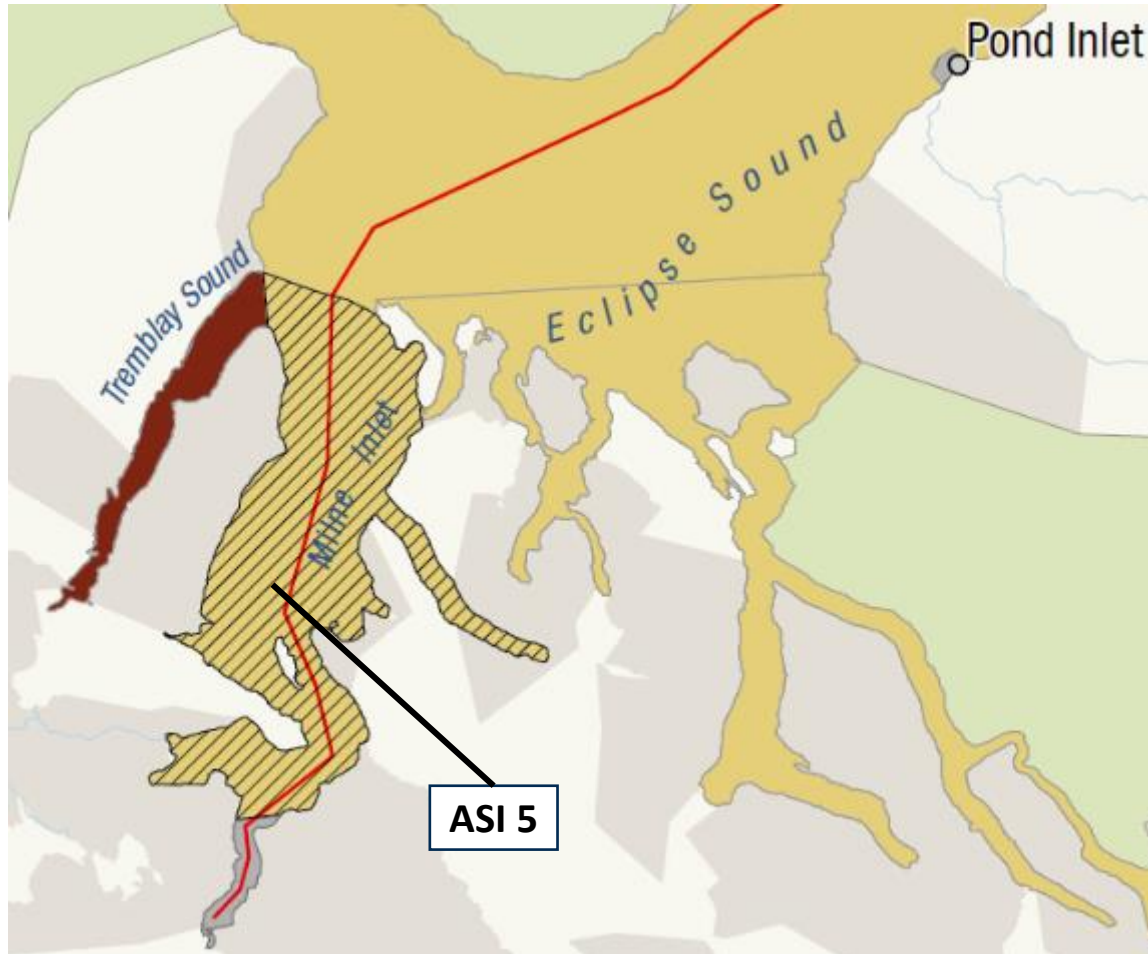


# ASI 1: Fjords North of Clyde River



- Visitor orientation.
- Visitors requested to hire local guide.
- Support enhanced communication between communities and other users to respect communities
- Ships requested not to travel into northern fjords.
- Up to 3-week closure beginning of open water season to protect community harvest in the southern fjords
- Zoning applies.

# ASI 5: Milne Inlet



- Visitor orientation.
- Visitors encouraged to hire local guide.
- Support enhanced communication between communities and other users to respect communities
- Speed limit of 9 knots for vessels over 300 tons.
- Zoning applies: No cruise ships (narwhal protection).

# NWMB Approval



# For NWMB Approval

## Section 5.2.34 (c)

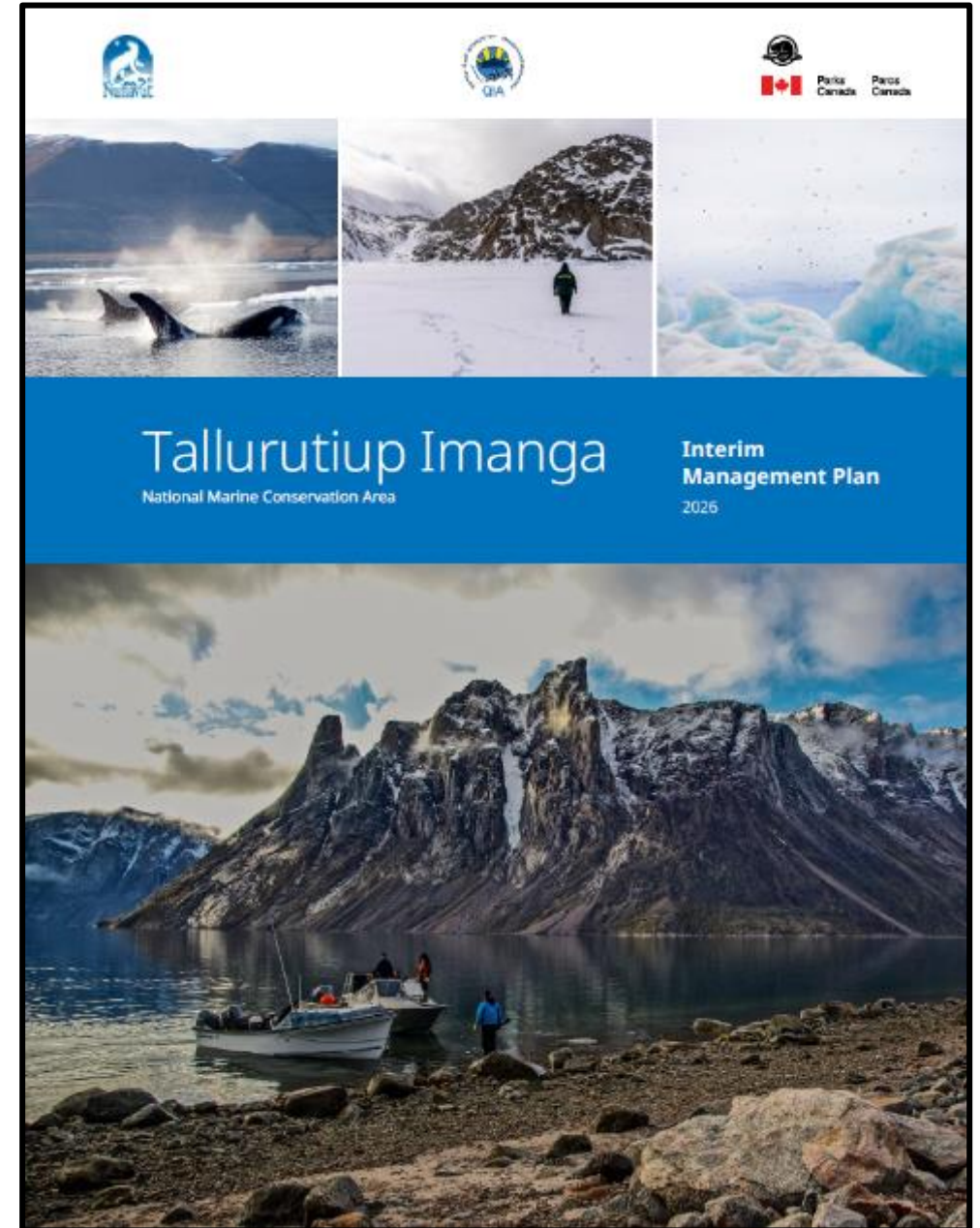
*(c) approve plans for management and protection of particular wildlife habitats including areas within Conservation Areas, Territorial Parks and National Parks;*

- Approve the Interim Management Plan for Tallurutiup Imanga NMCA

## Section 5.6.48 - Non-Quota Limitations

*Subject to the terms of this Article, the NWMB shall have sole authority to establish, modify or remove, from time to time and as circumstances require, non-quota limitations on harvesting in the Nunavut Settlement Area.*

- Approve non-Inuit limitations on harvesting in Zones 1 and 3



# Zone 1 – Ice and Open Water Season

Not allowed

= Limitation on Harvesting for non-Inuit\*

**\*Access and extractive uses are prohibited throughout all Zone 1 areas for non-Inuit**

	Wreck of Breadalbane NHS of Canada	Walrus haul-out sites	Seabird colonies	Ikpikittuarjuk/ Moffet Inlet	Tremblay Sound
<b>Recreational fishing</b>	Not allowed	Not allowed	Not allowed	Not allowed	Not allowed
<b>Commercial fisheries</b>	Not allowed	Not allowed	Not allowed	Not allowed	Not allowed
<b>Hunting, trapping, gathering (non-rights based)</b>	Not allowed	Not allowed	Not allowed	Not allowed	Not allowed
<b>Bottom trawling</b>	Not allowed	Not allowed	Not allowed	Not allowed	Not allowed

*\*No restriction on sport hunting as per the Tallurutiup Imanga IIBA*

# Zone 3 – Ice Season

Not allowed

=

**Limitation on Harvesting  
for non-Inuit\*\***

	Peary Caribou sea ice crossings*	Other key sea ice habitat*	Significant Benthic Areas
<b>Recreational fishing</b>	Allowed	Allowed	Allowed
<b>Commercial fisheries</b>	Allowed	Allowed	Allowed
<b>Hunting, trapping, gathering (non-rights based)</b>	Allowed	Allowed	Allowed
<b>Bottom trawling</b>	Not allowed	Not allowed	Not allowed

\*Commercial shipping is not allowed

\*\**No restriction on sport hunting as per the Tallurutiup Imanga IIBA*

# Zone 3 – Open Water Season

Not allowed

= Limitation on Harvesting for non-Inuit \*

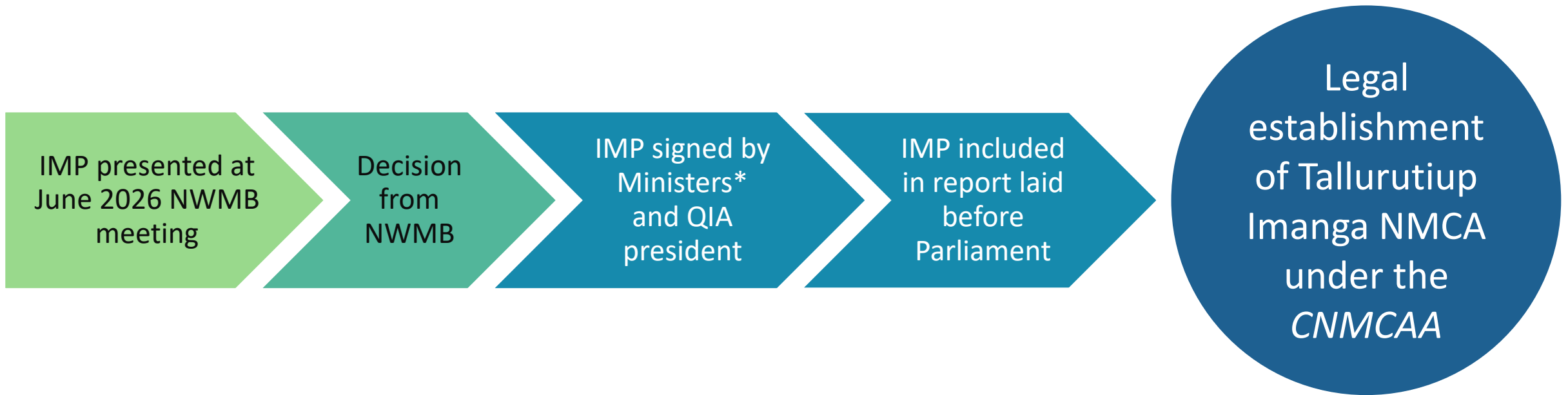
	Walrus haul-out buffer	Seabird colony buffers	Significant Benthic Areas	Beluga summer aggregation areas	Narwhal summer aggregation areas	Underwater cultural resource area
<b>Recreational fishing</b>	Not allowed	Allowed	Allowed	Allowed	Allowed	Allowed
<b>Commercial fisheries</b>	Not allowed	Not allowed	Allowed	Not allowed	Allowed	Allowed
<b>Hunting, trapping, gathering (non-rights based)</b>	Not allowed	Not allowed	Allowed	Not allowed	Allowed	Allowed
<b>Bottom trawling</b>	Not allowed	Not allowed	Not allowed	Not allowed	Not allowed	Not allowed

\*No restriction on sport hunting as per the Tallurutiup Imanga IIBA

# Next Steps



# Next Steps in the process



\*For the Government of Canada: Minister of Environment, Climate Change and Nature; Minister of Transport; Minister of Fisheries.  
For the Government of Nunavut: Minister of Environment.

# Contact

**tallurutiupimanga@pc.gc.ca**



Qikiqtani Inuit Association  
Justin Buller - [jfbuller@dryasconsulting.ca](mailto:jfbuller@dryasconsulting.ca)



Government of Nunavut  
[environment@gov.nu.ca](mailto:environment@gov.nu.ca) | 1-867-975-7700

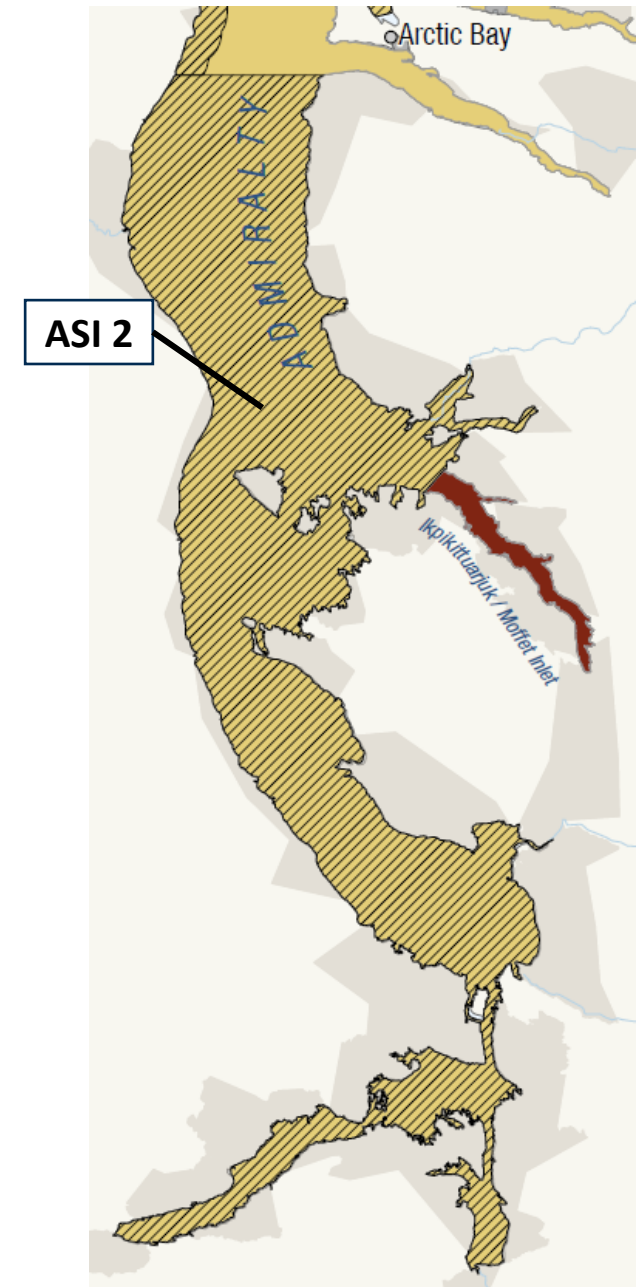


Parks Canada  
Laurent Jonart - [laurent.jonart@pc.gc.ca](mailto:laurent.jonart@pc.gc.ca) | 867-222-1102

# APPENDIX 1: ASI Slides

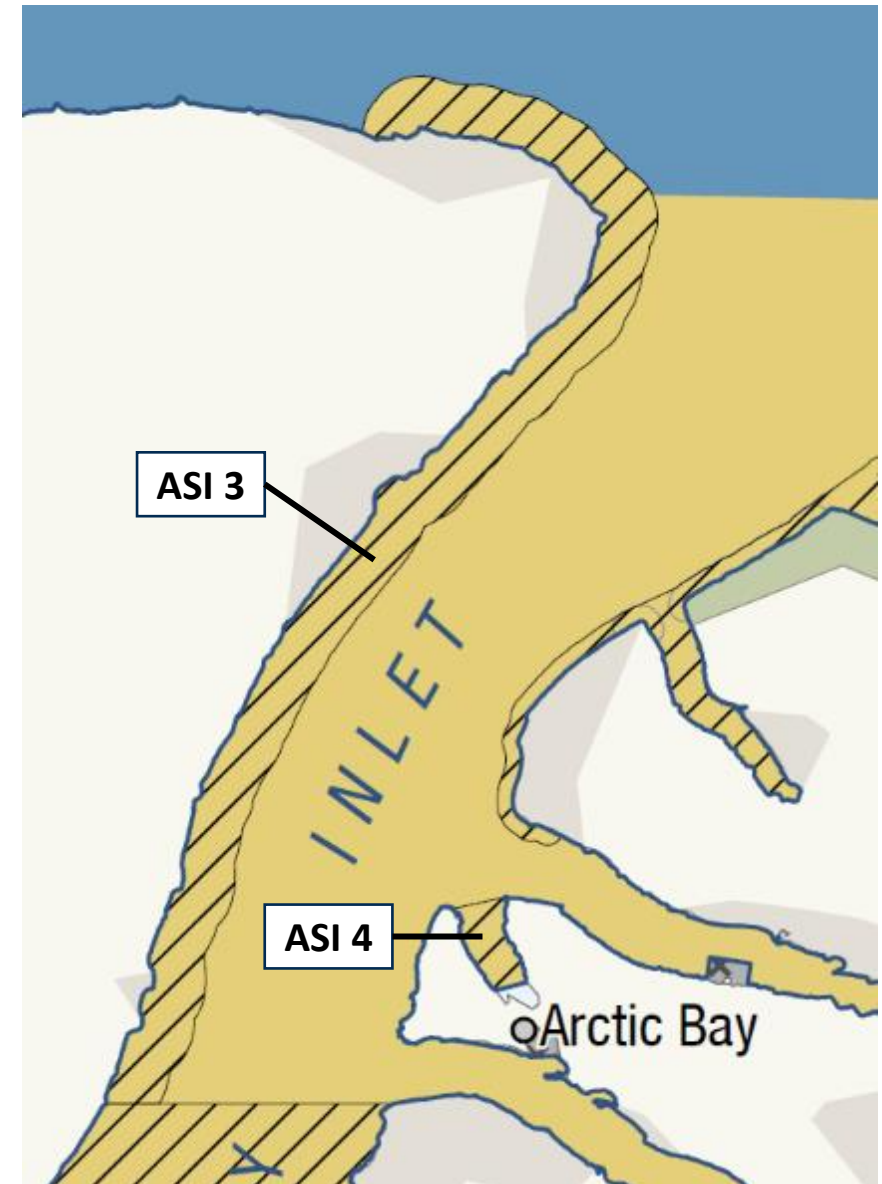
# ASI 2: South Admiralty Inlet

- Orientation for visitors
- Visitors requested to hire a local guide.
- Support enhanced communication between communities and other users to respect communities.
- Speed limit of 9 knots for vessels over 300 tons for all Admiralty Inlet.



# ASI 3: Strip along eastern shore of Brodeur Peninsula & ASI 4: Victor Bay

- Orientation for visitors
- Visitors requested to hire local guide
- Support enhanced communication between communities and other users to respect communities.
- Request vessels to obtain community support before accessing close to the shoreline.
- Victor Bay: Request that visiting vessels avoid Victor Bay to prevent interference with community activities

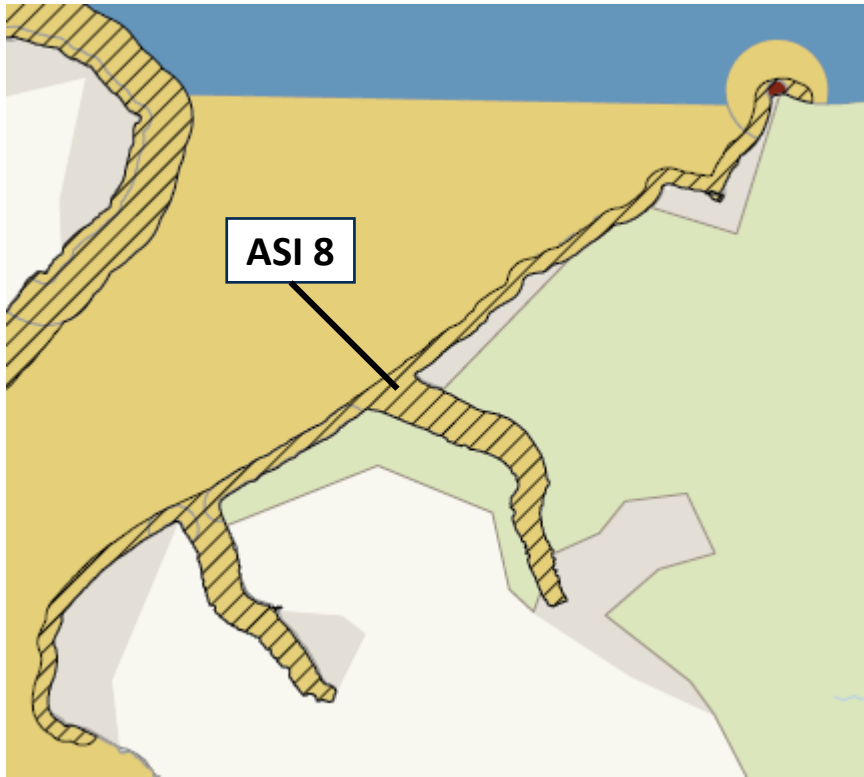


# ASI 6: Southeast and northeast coasts of Devon Island & ASI 7: Southeast coast of Ellesmere Island

- Orientation for visitors
- Visitors requested to hire a local guide.
- Support enhanced communication between communities and other users to respect communities.

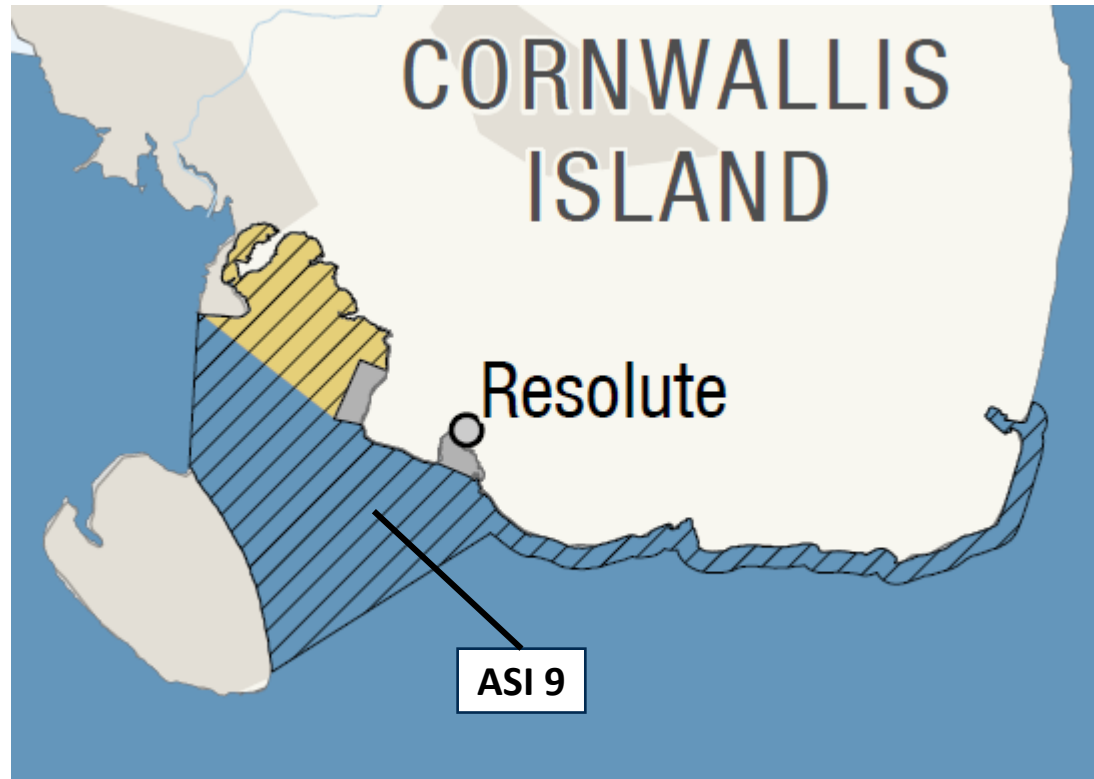


# ASI 8: Western shore of Borden Peninsula



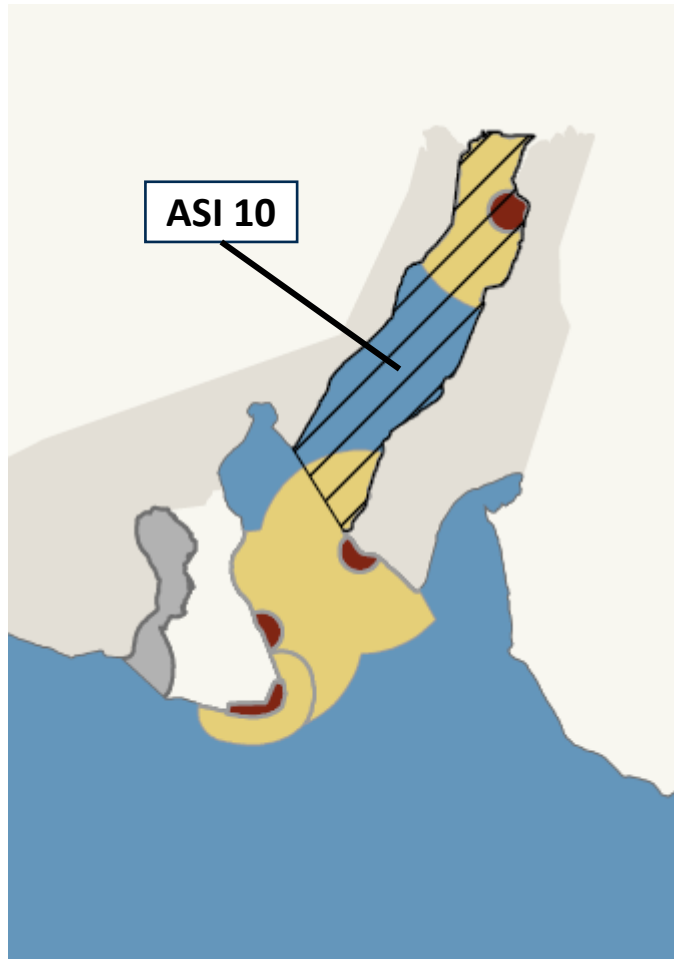
- Orientation for visitors
- Visitors requested to hire a local guide.
- Support enhanced communication between communities and other users to respect communities.
- Request vessels to obtain community support before accessing the area.

# ASI 9: Resolute Passage and Cornwallis Island coast



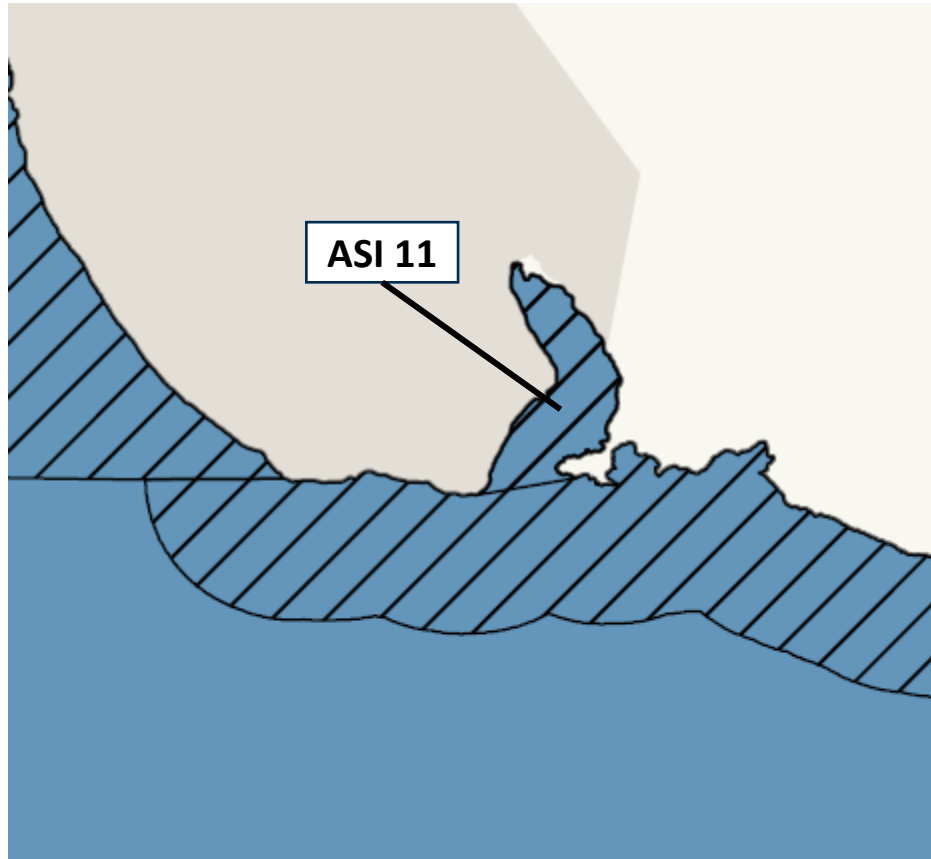
- Orientation for visitors
- Visitors requested to hire a local guide.
- Support enhanced communication between communities and other users to respect communities.
- Catch and release fishing will be discouraged.
- Preferred routes for cruise ships and commercial shipping will be identified.
- Community concerns about science and research. Permits will be required with community input on what is permitted or not.

# ASI 10: Radstock Bay



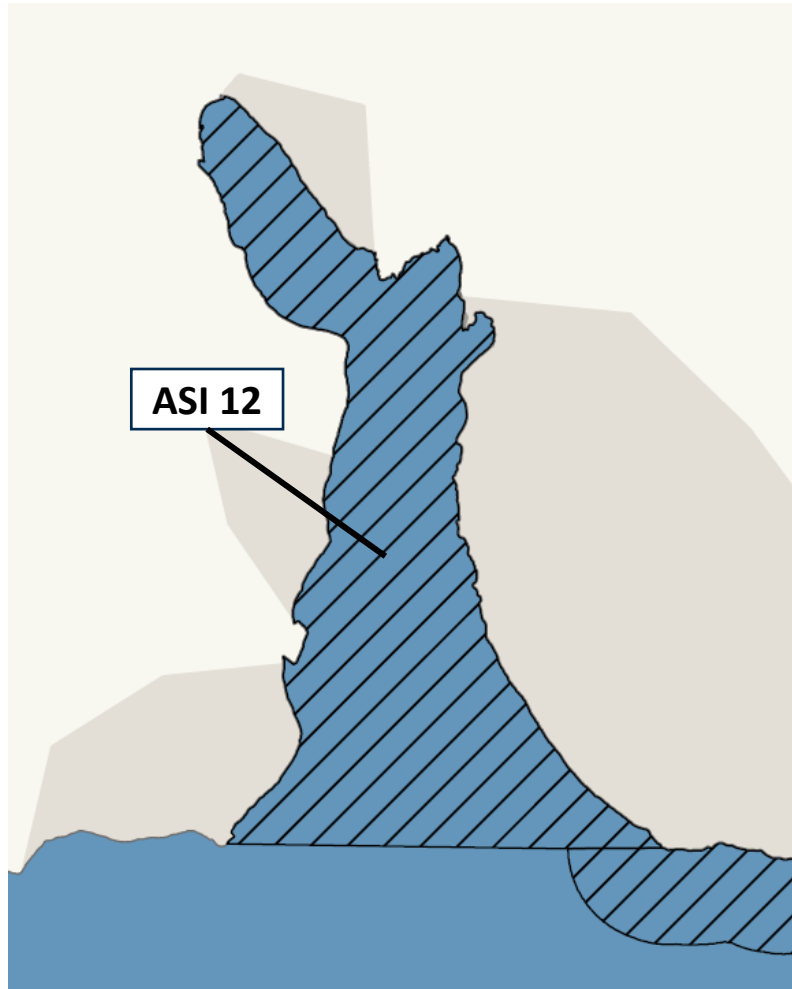
- Orientation for visitors
- Visitors will requested to a hire local guide.
- Support enhanced communication between communities and other users to respect communities.
- Ships are encouraged not to travel into these areas.
- Catch and release fishing will be discouraged.

# ASI 11: Dundas Harbour



- Orientation for visitors
- Visitors will be encouraged to hire a local guide.
- Support enhanced communication between communities and other users to respect communities.
- Ships are encouraged not to travel into these areas.
- Catch and release fishing will be discouraged.
- Participants recommended strict protection for area (no access). But Parks Canada / AB has no control over land areas outside TINMCA and cannot use zoning to cut off access.
- Concerns about access to Dundas Harbour cultural sites have been communicated to GN.

# ASI 12: Croker Bay



- Visitor orientation.
- Visitors encouraged to hire local guide.
- Support enhanced communication between communities and other users to respect communities
- Ships requested to avoid area.
- Catch and release fishing discouraged.
- No removal of glacier ice.
- Note: participants recommended strict protection for area.

# Sport Hunting in Tallurutiup Imanga NMCA

## **No Restriction to Sport Hunting as per the IIBA:**

**8.1.3** To acknowledge that sports hunting and Inuit activities carried out within Tallurutiup Imanga NMCA shall continue after Tallurutiup Imanga NMCA is established as a national marine conservation area pursuant to the Canada National Marine Conservation Areas Act.

**8.1.4** To acknowledge that sports hunting and Inuit activities will continue to be managed within Tallurutiup Imanga NMCA in accordance with the Nunavut Agreement and all applicable laws of general application.

**8.5.1** The Parties acknowledge that sports hunting activities within Tallurutiup Imanga NMCA shall continue to be regulated and managed by applicable laws of general application and in accordance with the Nunavut Agreement.

**8.5.2** The Aulattiqatigiit Board may provide recommendations as it deems appropriate to federal departments and agencies relating to the regulation of sports hunting activities within Tallurutiup Imanga NMCA including with respect to matters having the potential to impact Inuit participation therein.

**8.5.3** Licences, permits, fees and other requirements that may be imposed by Parks Canada and Department of Fisheries and Oceans with respect to sports hunting shall not unduly or unreasonably constrain Inuit participation in sports hunting. The foregoing provision does not apply to existing DFO regulations that pertain to sports hunting.