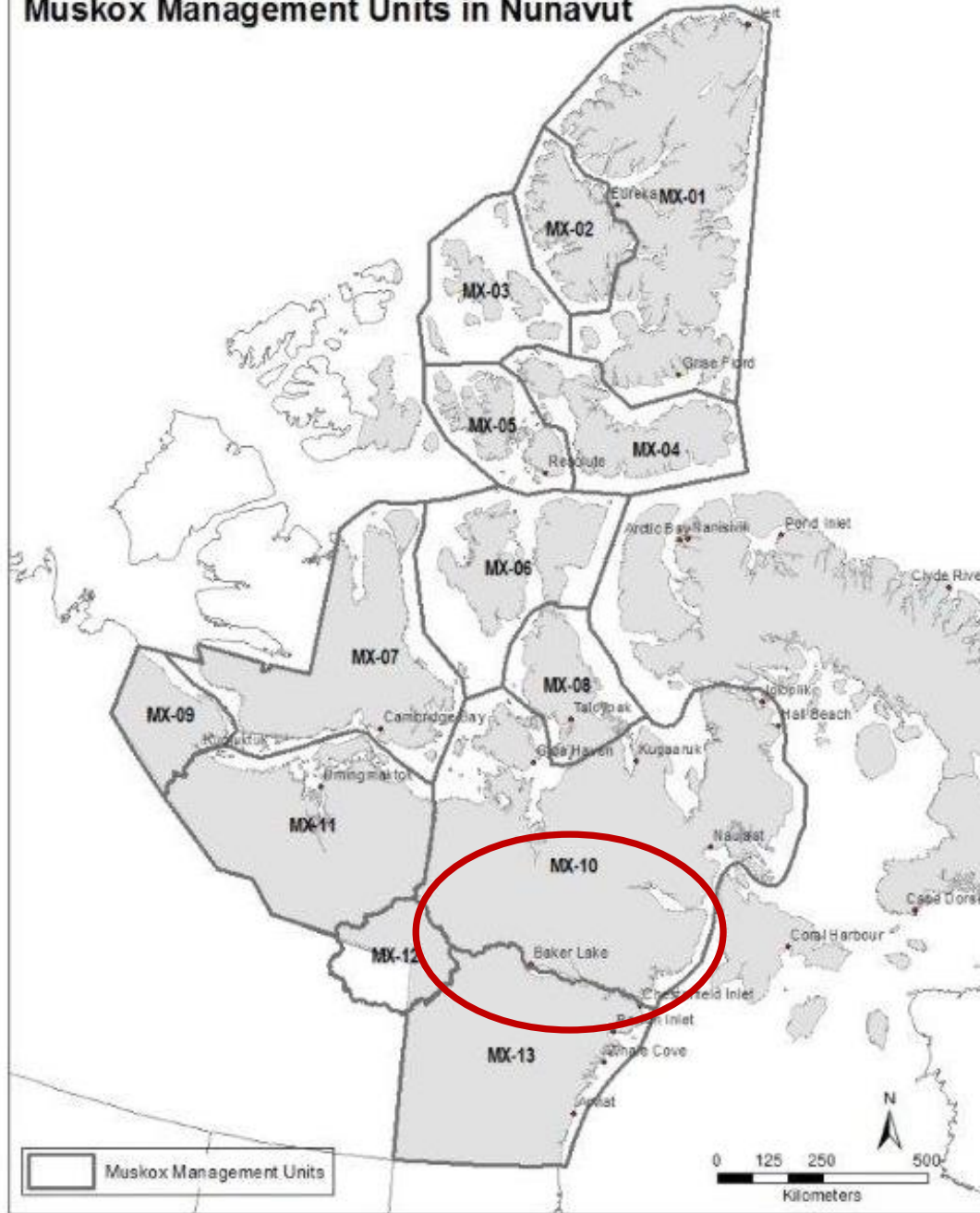


Muskox Management Units in Nunavut



ᐱᕐᕐᕐᕐᕐᕐ

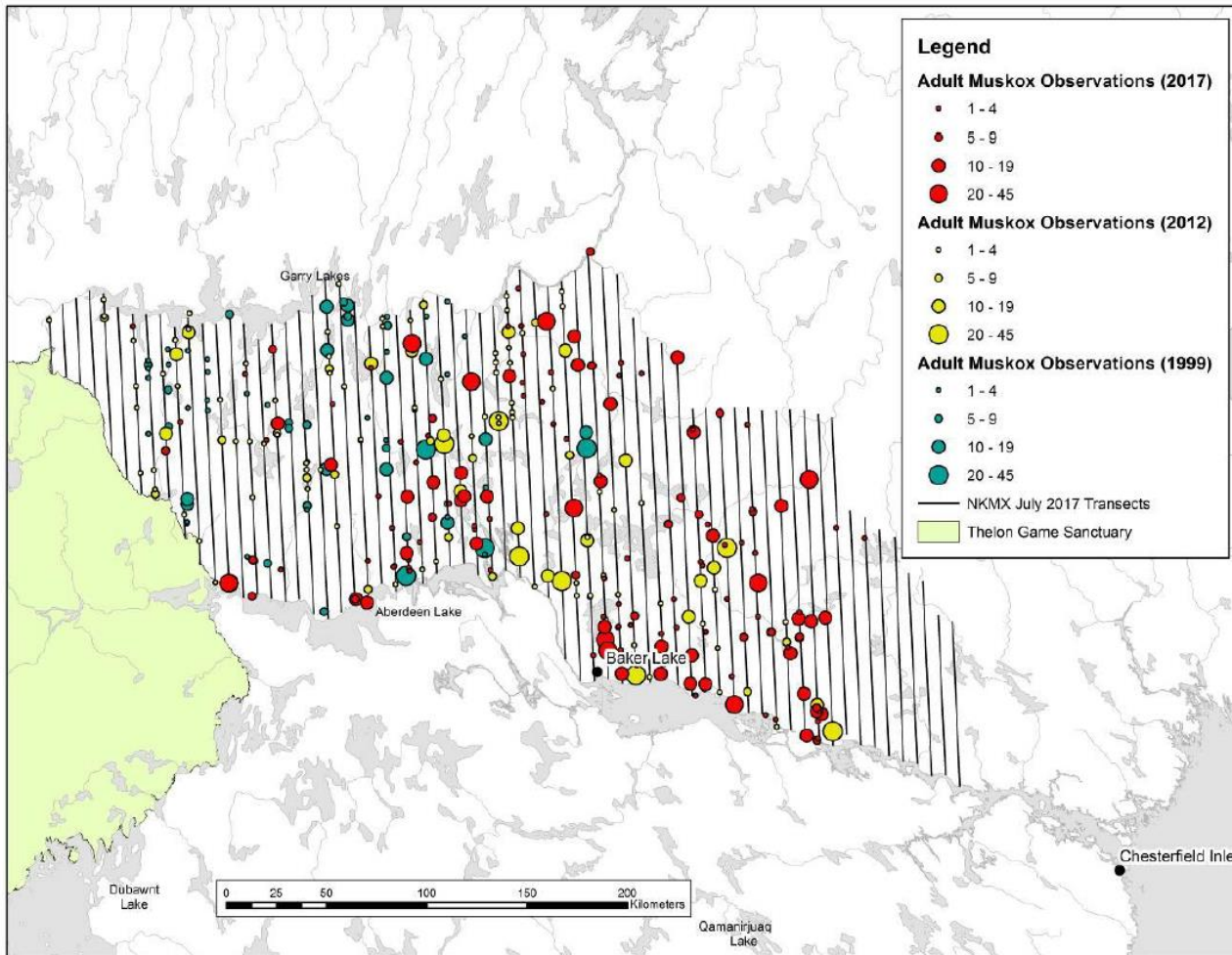


Figure 10. Northern Kivalliq muskox aerial survey observations of muskox from July 1999 (blue), to July 2012 (yellow), and July 2017 (red).



ᐃᓕᐃᑦᐅᓂᓂᑦ

ᑖᑦᐅᐃ ᐃᑦᐅᐅᓕᓂᓂᑦ (DOE) ᐃᑕᓕᑦᐅᓂᓂᑦ ᑖᑦᐅᓂᑦ ᓄᓂᓂᑦᐅ ᐅᓕᓂᓂᓂᑦᐅᑦ ᑖᐅᓕᓂᓂᑦ ᓄᓂᓂᑦᐅ ᐅᓂᓂᓂᑦᐅᓂᑦ ᐱᓂᐅᓂᑦ ᑖᐅᓂᓂᑦ ᐃᑦᐅᓂᑦᐅᓂᑦ (TAH) 190-ᑦ 240 ᐅᑦᓂᑦ ᑕᓕᓂᑦ ᐅᑦᓂᑦ ᐃᓕᓂᓂᑦ MX-10-ᑦ. ᑖᓂᑦ ᓄᓂᓂᑦᐅᓂᑦ 50 ᐅᑦᓂᑦ.

ᐱᓂᐅᓂᑦ

- ᑖᓂᑦ 2017 ᑖᐅᓂᓂᑦ ᑖᐅᓂᓂᑦ ᓄᓂᓂᑦᐅᓂᑦ ᑕᐃᑖᓂᑦ 2012 ᑖᐅᓂᓂᑦ ᐱᓂᐅᓂ ᓂᓂᓂᑦ ᓄᓂᓂᑦ ᓂᓂᓂᑦ ᓄᓂᓂᑦ 17%-ᑦ 13.2%-ᑦ 2012-ᑦ
- MX-10-ᑦ ᐅᑦᓂᑦ ᓄᓂᓂᑦ ᐃᓂᓂᑦ ᐃᓂᓂᑦ ᓄᓂᓂᑦ ᓄᓂᓂᑦ ᓄᓂᓂᑦ ᓄᓂᓂᑦ ᑕᐃᑖᓂ ᐃᓂᓂᑦ
- ᓄᓂᓂᑦᐅᓂᑦ ᓄᓂᓂᑦ ᓄᓂᓂᑦ ᓄᓂᓂᑦ ᓄᓂᓂᑦ ᓄᓂᓂᑦ ᐅᑦᓂᑦ ᐃᓂᓂᑦ MX-08-ᑦ ᐃᓂᓂᑦ MX-13-ᑦ
- ᐅᑦᓂᑦ ᓄᓂᓂᑦ ᓄᓂᓂᑦ ᓄᓂᓂᑦ ᓄᓂᓂᑦ ᓄᓂᓂᑦ ᓄᓂᓂᑦ ᓄᓂᓂᑦ ᓄᓂᓂᑦ ᓄᓂᓂᑦ
- ᓄᓂᓂᑦ ᓄᓂᓂᑦ ᓄᓂᓂᑦ ᓄᓂᓂᑦ ᓄᓂᓂᑦ ᓄᓂᓂᑦ ᓄᓂᓂᑦ ᓄᓂᓂᑦ ᓄᓂᓂᑦ ᓄᓂᓂᑦ ᓄᓂᓂᑦ
- ᑖᑦᐅᐃ ᐃᑦᐅᐅᓕᓂᓂᑦ (DOE) ᐃᓂᓂᑦ ᐃᓂᓂᑦ ᓄᓂᓂᑦ ᓄᓂᓂᑦ ᓄᓂᓂᑦ ᓄᓂᓂᑦ ᓄᓂᓂᑦ ᓄᓂᓂᑦ ᓄᓂᓂᑦ (TAH) ᓄᓂᓂᑦ ᓄᓂᓂᑦ ᓄᓂᓂᑦ ᓄᓂᓂᑦ ᓄᓂᓂᑦ ᓄᓂᓂᑦ ᓄᓂᓂᑦ ᓄᓂᓂᑦ.

ᑦᑏᑦᑏᑦᑏᑦ
THANK YOU
QUANAQUTIN
MERCİ