

Issue:

The Kivalliq Wildlife Board approved Management Plan for the Kivalliq Musk ox Population outlines changes to the Nunavut Wildlife Regulations governed by the Government of Nunavut and reviewed/approved by the NWMB. One such change to the regulations as it pertains to the Kivalliq Musk ox population was an increase in harvesting from 3% to 5% pending a survey of the population in the summer of 2010 and positive data results.

Background:

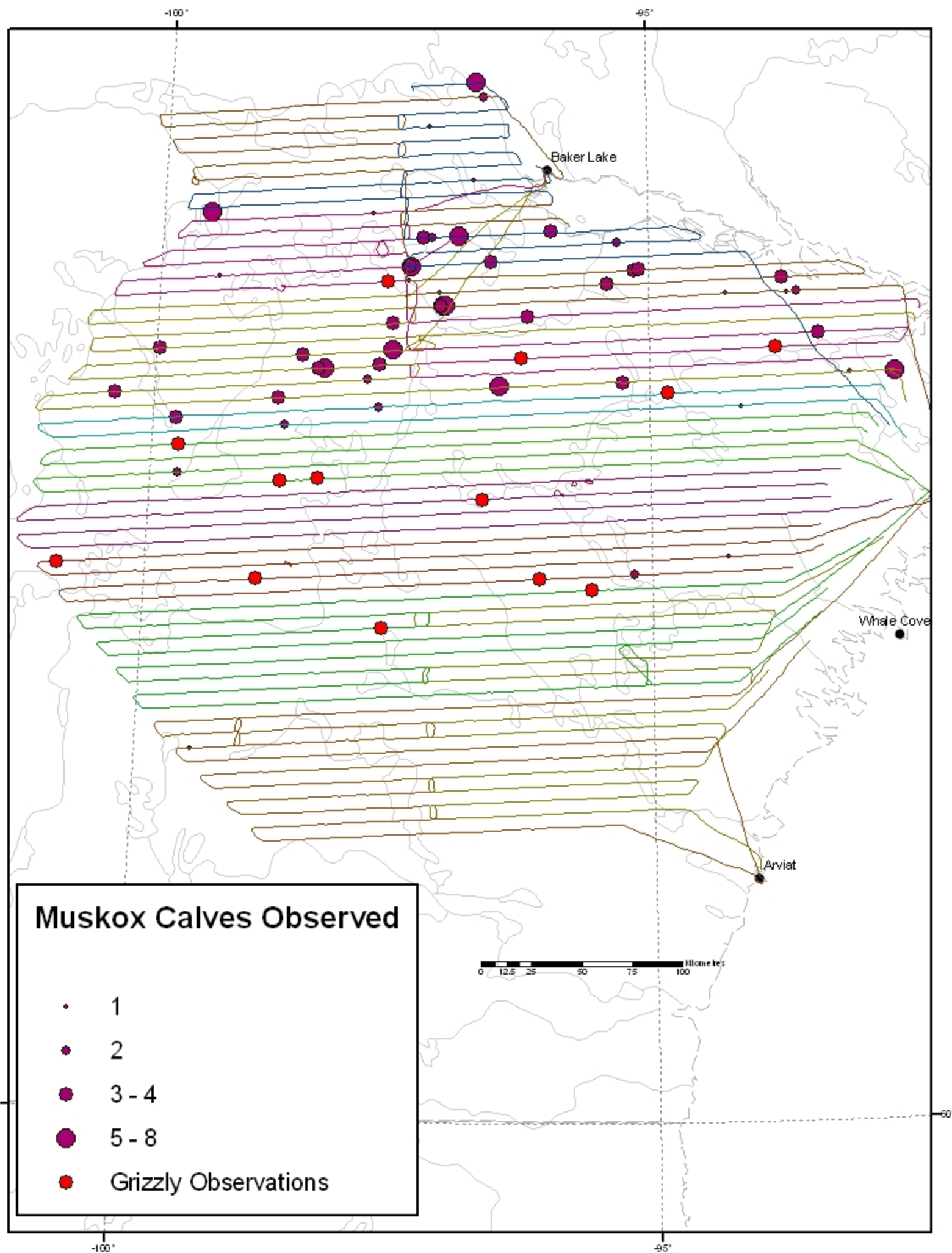
The Kivalliq Musk ox Management Plan was developed in response to a growing demand by Kivalliq harvesters to access Musk ox closer to their communities; increased sightings closer to the communities, larger groups of animals, expansion of the herd throughout the region pressed the KWB to develop a plan that would better accommodate harvester needs. After lengthily consultations with community HTOs, harvesters, stakeholders and the GN; three main changes were proposed to the Wildlife Regulations. 1) Re-zoning to allow harvesters to access Musk ox close to their communities, 2) removal of the season, 3) increasing harvesting from 3% to 5% of the population pending a complete survey.

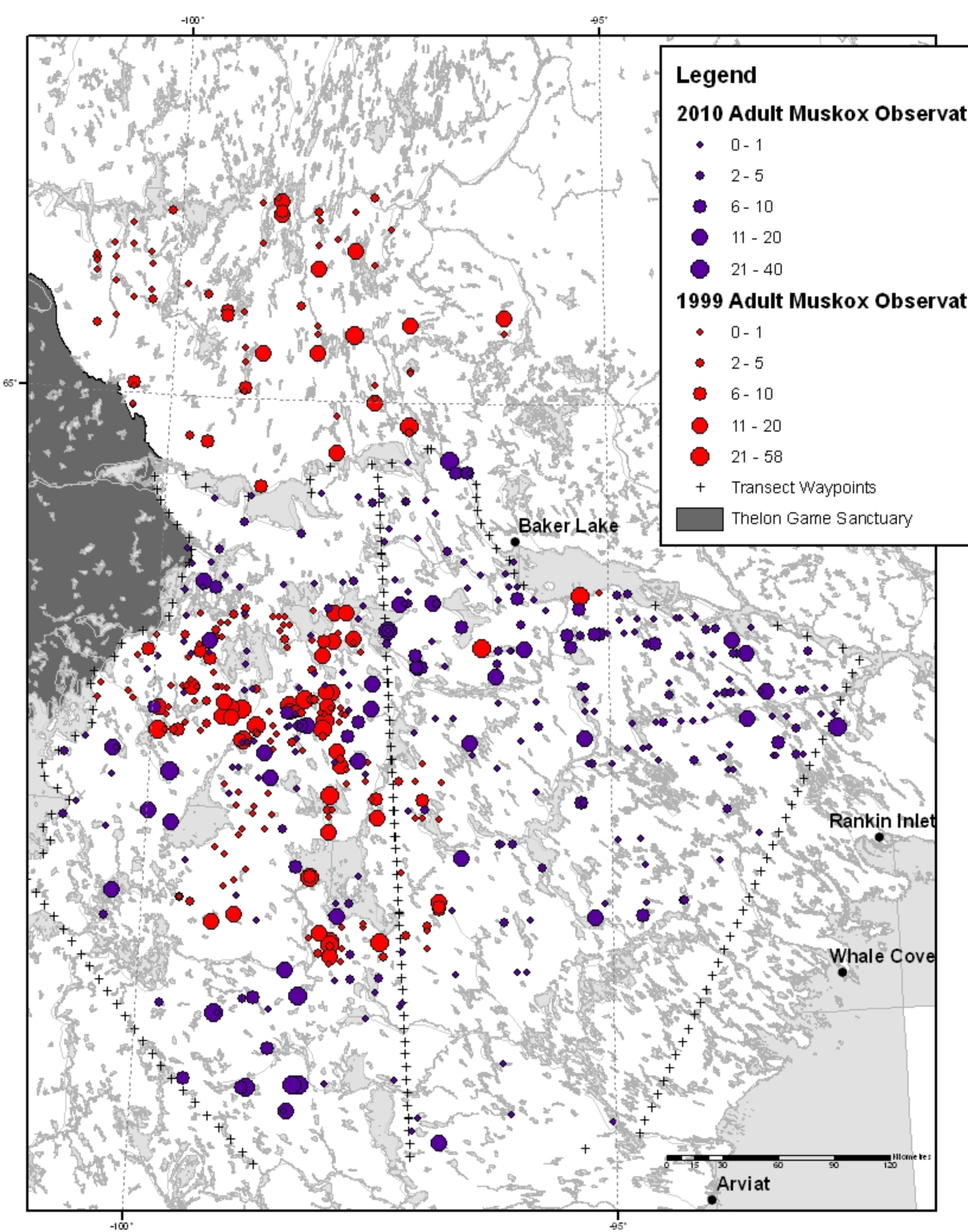
GN DOE conducted a full aerial survey of MX 18 in the summer of 2010 and prepared the results for presentation to the KWB at their Annual General Meeting; Mitch Campbell, the Regional Biologist for GN DOE, recommended, based on the results of the survey confirmed that the MX 18 Musk ox population had indeed expanded their range as indicated by harvesters and that the herd was healthy and an increase in harvesting from 3% to 5% was sustainable.

The KWB accepted the survey results, approved the increase in harvesting for zone MX 18, allocated tags to communities for harvesting year 2011/2012 and also requested that a survey be conducted in zone MX 17 as soon as possible to assess herd population and distribution.

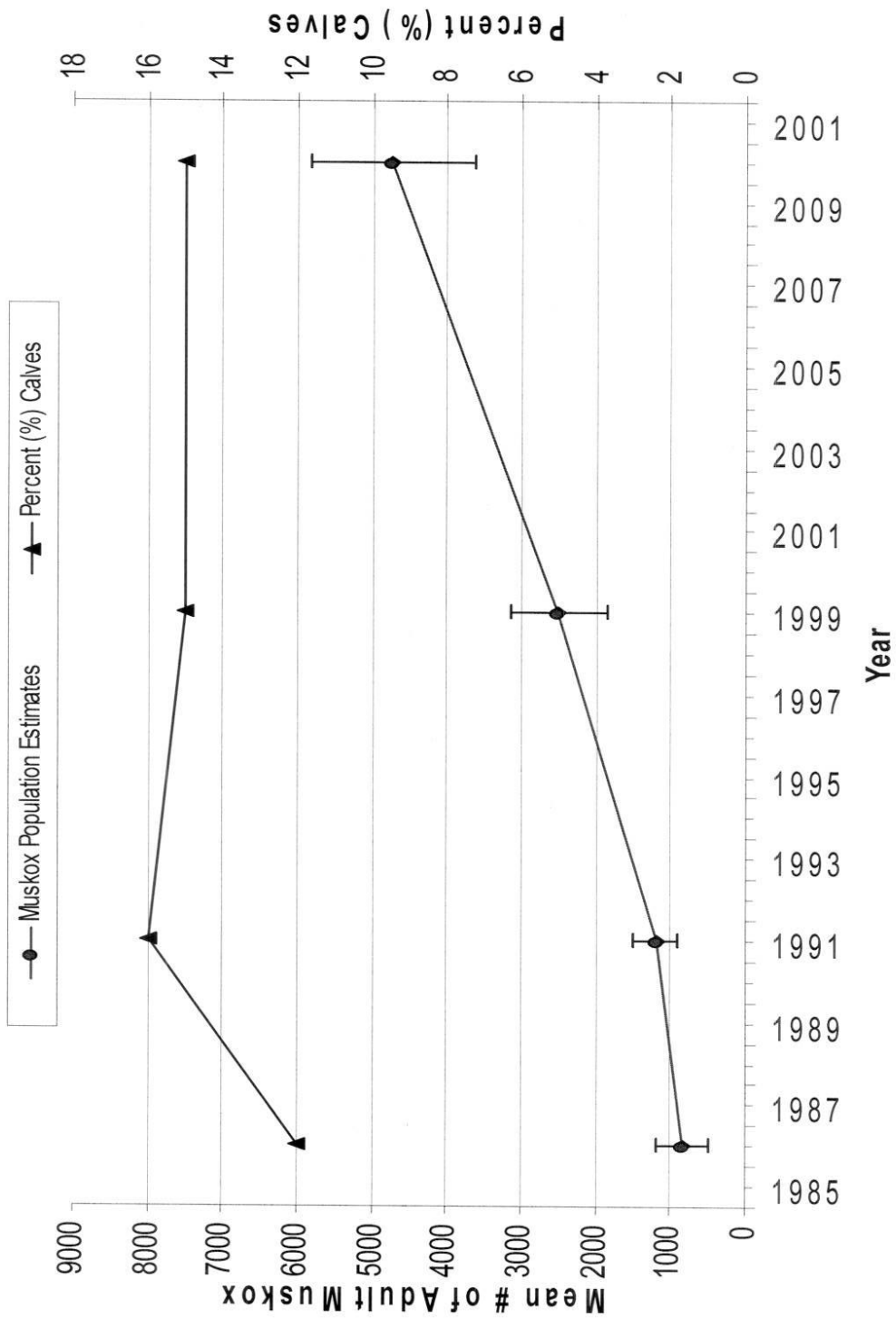
Conclusion:

Kivalliq Wildlife Board is seeking an immediate approval for an increase in TAH for Musk ox in zone MX 18 from 3% to 5% as recommended by GN DOE and supported by the Kivalliq Wildlife Board. All documentation is attached for Board review.





Demographic History of The Central Kivalliq





Richard Connelly <richardniws@gmail.com>

RE: Central Kivalliq Muskox

4 messages

Campbell, Mitch <MCampbell1@gov.nu.ca>

Fri, May 27, 2011 at 4:06 PM

To: Richard Connelly <richardniws@gmail.com>

Cc: "Vetra, David" <DVetra@gov.nu.ca>, "Pameolik, Jonathan" <PameolikJ@gov.nu.ca>

Hi Richard,

Thanks for doing this talk for me Richard. Please find attached some figures/pictures you can display for the board. Our recommendation will be to increase the MX/18 Muskox Population Quota (also called the central Kivalliq population) from its current level (93) to one hundred eighty two (182) (which is 5% of the lower confidence limit of 3,637 adults estimated in July 2010). We are recommending all other components of the most current regime (i.e. no seasons, the new MX/18 zone) remain the same. We are also recommending that the KWB request a Northern Kivalliq muskox survey (the new MX/17), next summer and a followup survey of the central kivalliq muskox (MX/18) population by 2016. I'll have more for you on Monday. Please let me know that you received this.

Cheers,

Mitch

6 attachments**2010_July_Muskox_Carnivore_Obs.jpg**
612K**2010_July_Muskox_Study_Area_Analysis_Calves_Grizzlys_20_2010.jpg**
473K