

SUBMISSION TO THE
NUNAVUT WILDLIFE MANAGEMENT BOARD AND
NUNAVIK MARINE REGION WILDLIFE BOARD
FOR

Information: X

Decision:

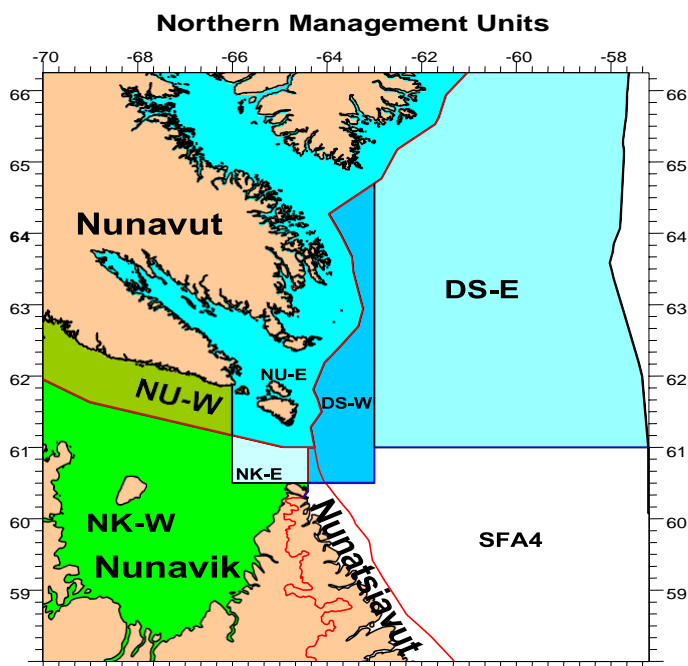
Recommendation:

Issue: Extension of carry forward provisions for the Northern shrimp fishery in the Eastern Assessment Zone (EAZ) due to unseasonal ice conditions.

Map:

Blue areas – Eastern Assessment Zone

Green areas – Western Assessment Zone



Northern shrimp (*Pandalus borealis*)



Striped shrimp (*Pandalus montagui*)

Background

Two shrimp species (*P. borealis* and *P. montagui*) occur in the Northern shrimp fishery that takes place in the Davis Strait and eastern Hudson Strait. This fishery is managed according to two distinct stock assessment zones, the Western Assessment Zone (WAZ)

and the Eastern Assessment Zone (EAZ) (Appendix 1).

While allocations are provided annually for commercial fishing, season bridging of quota is regarded as a useful operational flexibility in the WAZ and EAZ shrimp fisheries that allows for additional opportunities to catch allocations in full, without compromising the sustainability of the resource.

Collectively, season bridging in the shrimp fisheries refers to 1) borrowing from the following year's quota to be fished in the current year; and 2) transferring some of the current year's unused quota to be caught in the following year (carry forward). Under the current bridging protocols in the EAZ, up to 350t is available for carry forward for Nunavut and 20t for Nunavik allocations, to be fished within the first 120 days (April 1 - July 31 of the following year) (Appendix 2). Quota that is not caught by this date will remain unfished.

In late June 2022, industry requested to the Department that the carry forward provisions be extended in the Davis Strait West portion of the EAZ due to heavy ice conditions persisting delaying industry's ability to prosecute the fishery. In mid-July, the request to extend the carry forward date was also made by Baffin Fisheries to include the areas of Nunavut-East (NU-E) and Nunavik (NK-E) due to persistent ice condition in those areas as well.

Science Considerations

The *P. borealis* stock in the EAZ is in the Healthy Zone of the Precautionary Approach (PA) Framework. Despite the recent reduction in the estimate of the fishable biomass and the spawning stock biomass in 2021 for the EAZ stock, *P. borealis* remains in the healthy zone of the PA Framework, and as such DFO Science does not foresee negative consequences of allowing an extension of the carry-forward provisions as prescribed for the stock.

Ice cover persisting later than normal into the summer season in the EAZ would likely delay development of larval shrimp and the recruitment for the 2022 season until such time as ice cover is reduced and ice-free conditions occur later in the summer.

Next Steps

Ice charts obtained from Environment and Climate Change Canada (ECCC) have confirmed that ice continues to remain in the EAZ (Appendix 3). DFO Science has indicated there are no conservation concerns with extending the current deadline, given the ice cover and its effect on the spawning period. As ice remains an impediment to the prosecution of the Northern shrimp fishery in the EAZ, and after discussions with Nunavut Wildlife Management Board staff given that there was no possibility of briefing the Board in advance of the decision, the Department has decided to extend the deadline for harvesting carry forward quota in all areas of the EAZ, including Nunavut East, from July 31 to August 31, 2022. This approach is consistent with actions taken elsewhere in situations where ice conditions have prevented normal, timely fishing activities.

Prepared by: Fisheries Resource Management, Fisheries and Oceans Canada

Date: August 4, 2022

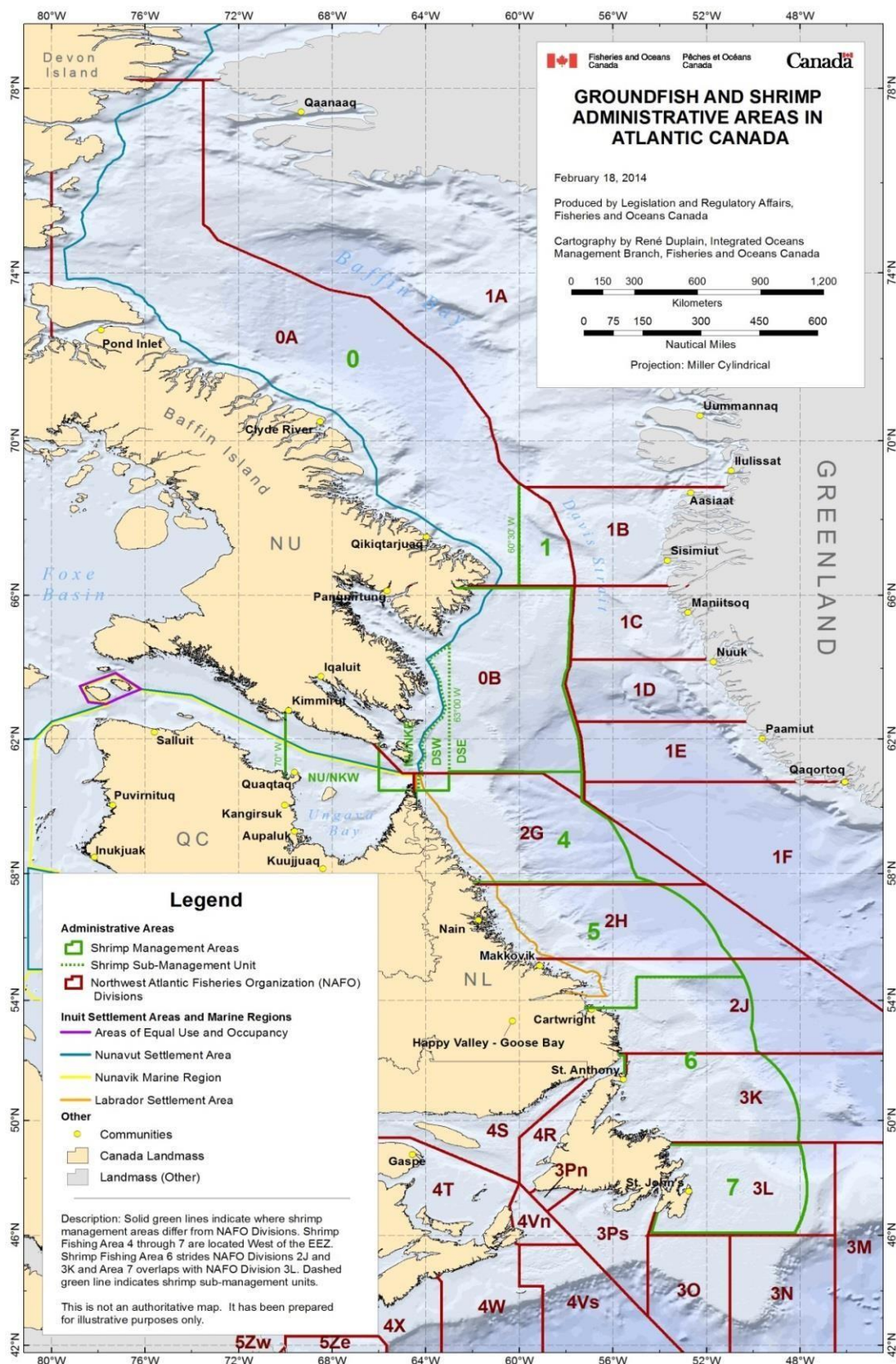
Appendices

Appendix 1 – Map of groundfish and shrimp administrative areas in Atlantic Canada

Appendix 2 – Season bridging protocol for NU and NK Allocations in the WAZ and EAZ

Appendix 3 – Maps illustrating ice conditions in late June 2022, late June 2021

APPENDIX 1



Season Bridging Protocol for NU and NK Allocations in the WAZ and EAZ

Carry Forward

WAZ (*P. montagui*)

The Department will make 800t available in the WAZ for carry forward to Nunavut and Nunavik allocation holders annually; sharing of this amount will be consistent with the sharing arrangement established by the Boards.

Currently, based on the 50/50 split, Nunavut and Nunavik will each be able to bridge a total of 400t each. Any carry forward quota not caught by September 30 of the following year will remain unfished.

EAZ - Davis Strait, NU/NK E¹ (*P. borealis*)

350t will be available for carry forward for Nunavut and 20t for Nunavik allocations, to be fished by July 31 of the following year. Quota that is not caught by this date will remain unfished.

Where the *P. borealis* stock is no longer in the Healthy Zone, carry forward amounts are reduced such that:

- If the stock is in the Cautious Zone, original carry forward amounts for Nunavut and Nunavik allocations are reduced by 13% and 26% in the upper- and lower-half of the Cautious Zone, respectively.
- If the stock is in the Critical Zone, no carry forward is permitted.

Borrowing

WAZ (*P. montagui*)

Nunavut and Nunavik shall share a total of 550t annually for borrowing based on sharing arrangements established by the Boards, which is currently 275t each. Requests to borrow quota will be assessed by the Department on a case by case basis in consideration of ice and climate conditions.

EAZ - Davis Strait, NU/NK E² (*P. borealis*)

Nunavut and Nunavik entities shall be allowed to borrow a total of 225t and 10t respectively from their following year's allocations, to be fished in the last month (March) of the current fishery.

¹ Subject to the Minister's decision to remove the bycatch designation for *P. Borealis* in NU/NK E.

² Subject to the Minister's decision to remove the bycatch designation for *P. Borealis* in NU/NK E.

Table 1. Nunavut and Nunavik allocations available for carry forward and borrow.

Area	Nunavik		Nunavut	
	Carry forward	Borrow	Carry forward	Borrow
WAZ <i>P. montagui</i>	400t	275t	400t	275t
WAZ <i>P. borealis</i>	<i>N/A - Bycatch</i>			
EAZ <i>P. montagui</i>	<i>N/A - Bycatch</i>			
EAZ <i>P. borealis</i> (<i>Davis Strait</i> <i>NU/NK E</i> ¹)	20t	10t	350t	225t

¹ Subject to the Minister's decision to remove the bycatch designation for *P. borealis* in NU/NK E.

