



# Lisa-Marie Leclerc

January 14, 2016

# GN DOE mandate

---



The DOE Wildlife Management division has a legislated mandate for the management of terrestrial wildlife species in Nunavut. In addition to the Nunavut Wildlife Act, the Wildlife Management division is responsible for fulfilling GN responsibilities under a wide range of federal legislation and both national and international agreements and conventions, including on-going responsibility for the co-management of Nunavut wildlife as obligated under the NLCA. One of the primary goals of the Division is to achieve a balanced approach to wildlife management that meets legislative requirements, uses both science and Inuit Qaujimajatuqangit (IQ) and reflects the values and needs of Nunavummiut.

## Objectives

The objectives of the Wildlife Management division are to:

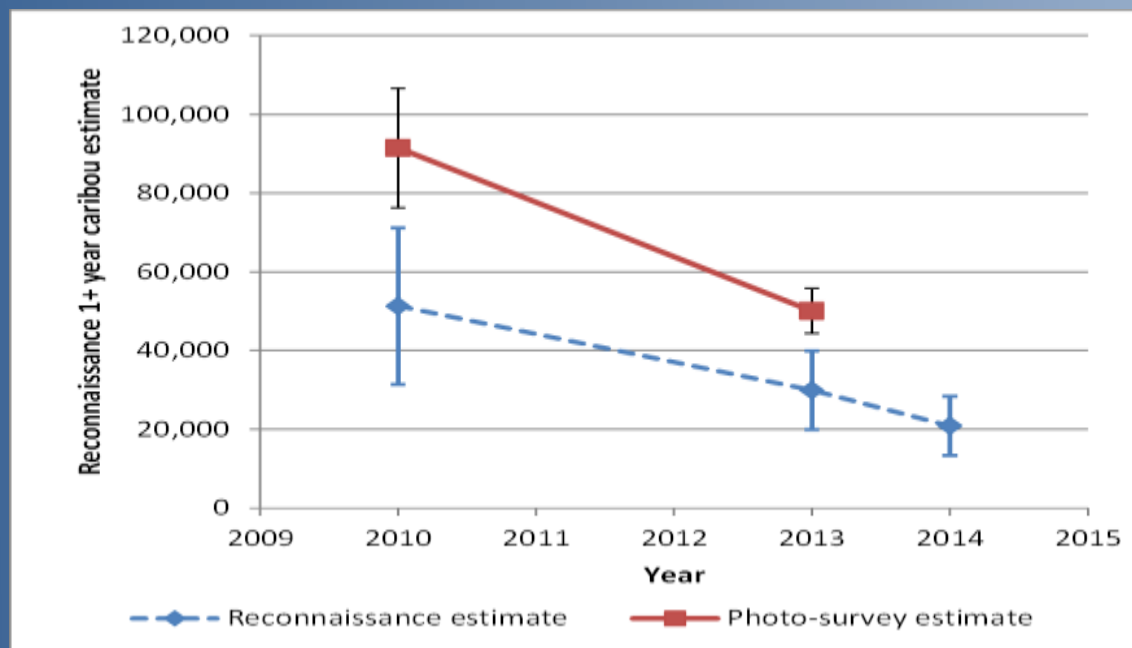
- provide up-to-date information from various sources, including in-house scientific research and Inuit Qaujimajatuqangit, to co-management partners in order to make responsible wildlife management and land use recommendations;
- develop wildlife management plans with co-management partners in order to protect wildlife populations; meet national and international obligations;
- provide support and resources to co-management partners and harvesters; and, ensure legislative and regulatory compliance through education and enforcement

# GN DOE Proposed Recommendations



## 2014 Bluenose East Caribou:

- The total estimated number of caribou in the calving ground was 20,900 compared to 29,443 in 2013.
- This surveys suggested a future decline by 30%



GN DOE

NWMB

Minister

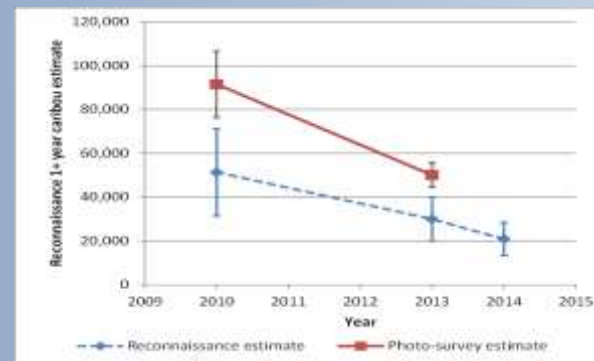
# GN DOE Proposed Recommendations



Bluenose-Est, based on :

- The latest population estimate available , 68000 caribou in 2013.
- Harvest monitoring program show an overall harvest of the herd estimated in the order of 3,500 caribou. Of this, subsistence harvest in Nunavut was estimated between 1000 – 1500 (1250) caribou annually which represent 36% of the overall harvest .
- According to the “Taking Care of Caribou” Management plan, signed by the KRWB, the recommended harvest rate is 4%.

HERD	Historic High As measured by surveys	Threshold Between green & yellow/orange	Threshold Between red & yellow/orange
Cape Bathurst Herd	19,000	12,000	4,000
Bluenose West Herd	112,000	56,000	15,000
Bluenose East Herd	120,000	60,000	20,000



GN DOE

NWMB

Minister

# GN DOE Proposed Recommendations



Bluenose-East:

$(68,000 \text{ caribou} \times 4\% \text{ harvest rate}) / 100 = 2,800$   
caribou in total

$(2,800 \text{ caribou} \times 36\%) / 100 = 1000$  caribou for Nunavut  
where  $1250 / 3500 = 36\%$

Herd Vulnerability Level		Recommended Acceptable Total Harvest (% of herd <sup>20</sup> )	Recommended Aboriginal Harvest	Recommended Resident Harvest	Recommended Commercial Harvest
Very Low	More Liberal Harvest Options	5 % or higher	Unrestricted, Either Sex Harvest	Limited tags/hunter	Limited commercial tags
Low		3-5 %	Unrestricted, Promote Bull Harvest	Limited tags/hunter	Limited commercial tags
Medium		2-3 %	Unrestricted, Promote Bull Harvest	Limited tags/hunter; possible limit on tags	Either no commercial tags or small numbers of tags
High		<2 %	Promote Conservation, Voluntary Bulls Only Harvest	Limited tags/hunter; possible limit on tags	No commercial tags
Very High	More Conservative Harvest Options	<1 % <sup>20</sup>	Consider Mandatory Bulls Only Harvest	No resident tags	No commercial tags

NU TAH = 1000

GN DOE

NWMB

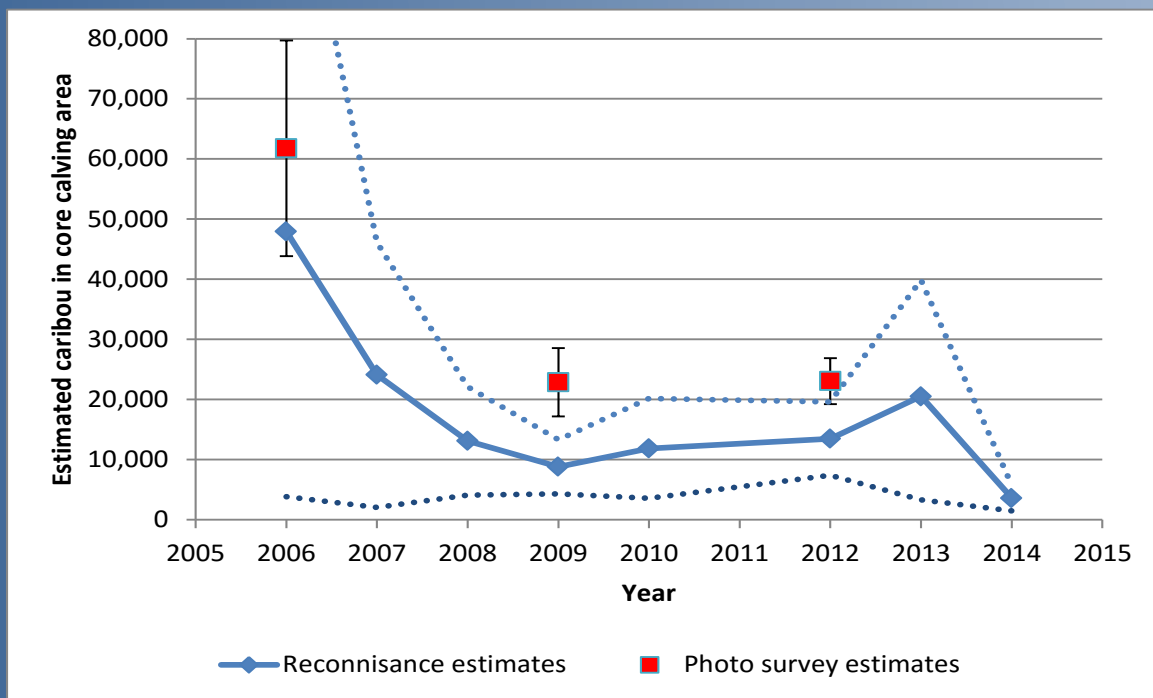
Minister

# GN DOE Proposed Recommendations



## 2014 Bathurst Caribou:

- The total estimated number of caribou in the calving ground was 3,594 compared to 14,390 in 2012.
- This surveys suggested a future decline by 73%



GN DOE

NWMB

Minister

# GN DOE Proposed Recommendations

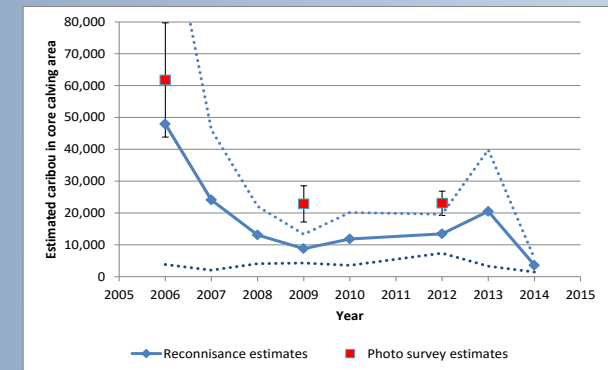


Bathurst based on :

- The latest population estimate available, 35,000 caribou in 2012.
- Given an estimated sustainable harvesting rate of 1% since 2010 (considered low for barren-ground caribou), a harvest of 370 caribou/year from both jurisdiction was not able to sustain current abundance. The herd has continued to decline under the current management.

Herd Vulnerability Level	Recommended Acceptable Total Harvest (% of herd <sup>20</sup> )	Recommended Aboriginal Harvest	Recommended Resident Harvest	Recommended Commercial Harvest
Very Low	5 % or higher	Unrestricted, Either Sex Harvest	Limited tags/hunter	Limited commercial tags
Low	3-5 %	Unrestricted, Promote Bull Harvest	Limited tags/hunter	Limited commercial tags
Medium	2-3 %	Unrestricted, Promote Bull Harvest	Limited tags/hunter; possible limit on tags	Either no commercial tags or small numbers of tags
High	<2 %	Promote Conservation, Voluntary Bulls Only Harvest	Limited tags/hunter; possible limit on tags	No commercial tags
Very High	<1 % <sup>20</sup>	Consider Mandatory Bulls Only Harvest	No resident tags	No commercial tags

More Liberal Harvest Options (top) and More Conservative Harvest Options (bottom) are indicated by arrows on the left side of the table.



GN DOE

NWMB

Minister



# GN DOE Proposed Recommendations



## Bathurst:

At this declining rate, biologically, the herd cannot sustain an harvest.

(100/ 35,000 caribou = 0.3% harvest rate

Herd Vulnerability Level	Recommended Acceptable Total Harvest (% of herd <sup>10</sup> )	Recommended Aboriginal Harvest	Recommended Resident Harvest	Recommended Commercial Harvest
Very Low	5 % or higher	Unrestricted, Either Sex Harvest	Limited tags/hunter	Limited commercial tags
Low	3-5 %	Unrestricted, Promote Bull Harvest	Limited tags/hunter	Limited commercial tags
Medium	2-3 %	Unrestricted, Promote Bull Harvest	Limited tags/hunter; possible limit on tags	Either no commercial tags or small numbers of tags
High	<2 %	Promote Conservation, Voluntary Bulls Only Harvest	Limited tags/hunter; possible limit on tags	No commercial tags
Very High	<1 % <sup>10</sup>	Consider Mandatory Bulls Only Harvest	No resident tags	No commercial tags

More Liberal Harvest Options (top to bottom)

More Conservative Harvest Options (bottom to top)

NU TAH = 100

GN DOE

NWMB

Minister



# GN DOE Proposed Recommendations

---



In June 2015,

- GN DOE submitted proposed recommended TAH of 1,000 caribou for the Bluenose herd to NWMB board.
- GN DOE submitted proposed recommended TAH of 100 caribou for the Bathurst herd to NWMB board.

There was no consensus on the proposed TAH by the HTO, although there was a recognition of the need of harvest limitation to address the principle of conservation concerns. Review the harvest limitation, for the two herds, based on the new population survey of June 2015.

GN DOE

NWMB

Minister

# GN DOE Proposed Recommendations

---



## SURVEYS

# GN DOE Proposed Recommendations



Bluenose-Est, based on :

- The latest population estimate available, 38 592 caribou in 2015.
- Harvest monitoring program show an overall harvest of the herd estimated in the order of 3,500 caribou. Of this, subsistence harvest in Nunavut was estimated between 1000 – 1500 (1250) caribou annually which represent 36% of the overall harvest .
- According to the “Taking Care of Caribou” Management plan, signed by the KRWB, the recommended harvest rate is 2.5%.

HERD	Historic High As measured by surveys	Threshold Between green & yellow/orange	Threshold Between red & yellow/orange
Cape Bathurst Herd	19,000	12,000	4,000
Bluenose West Herd	112,000	56,000	15,000
Bluenose East Herd	120,000	60,000	20,000

GN DOE

NWMB

Minister

# GN DOE Proposed Recommendations



Bluenose-East:

$(38,000 \text{ caribou} \times 2.5\% \text{ harvest rate}) / 100 = 950$   
caribou in total

$(950 \text{ caribou} \times 36\%) / 100 = 340$  caribou for Nunavut  
where  $1250 / 3500 = 36\%$

Herd Vulnerability Level	Recommended Acceptable Total Harvest (% of herd <sup>20</sup> )	Recommended Aboriginal Harvest	Recommended Resident Harvest	Recommended Commercial Harvest
Very Low	5 % or higher	Unrestricted, Either Sex Harvest	Limited tags/hunter	Limited commercial tags
Low	3-5 %	Unrestricted, Promote Bull Harvest	Limited tags/hunter	Limited commercial tags
Medium	2-3 %	Unrestricted, Promote Bull Harvest	Limited tags/hunter; possible limit on tags	Either no commercial tags or small numbers of tags
High	<2 %	Promote Conservation, Voluntary Bulls Only Harvest	Limited tags/hunter; possible limit on tags	No commercial tags
Very High	<1 % <sup>20</sup>	Consider Mandatory Bulls Only Harvest	No resident tags	No commercial tags

More Liberal Harvest Options (top to bottom)  
More Conservative Harvest Options (bottom to top)

NU TAH = 340 males only

GN DOE

NWMB

Minister

# GN DOE Proposed Recommendations



Bathurst based on :

- The latest population estimate available, 19,700 caribou in 2015.
- The herd has continued to decline under the current management; minimal harvest in Nunavut and moratorium in Northwest Territory with 15 tag allocated for ceremonial purposes only.

Herd Vulnerability Level	Recommended Acceptable Total Harvest (% of herd <sup>2</sup> )	Recommended Aboriginal Harvest	Recommended Resident Harvest	Recommended Commercial Harvest
Very Low	5 % or higher	Unrestricted, Either Sex Harvest	Limited tags/hunter	Limited commercial tags
Low	3-5 %	Unrestricted, Promote Bull Harvest	Limited tags/hunter	Limited commercial tags
Medium	2-3 %	Unrestricted, Promote Bull Harvest	Limited tags/hunter; possible limit on tags	Either no commercial tags or small numbers of tags
High	<2 %	Promote Conservation, Voluntary Bulls Only Harvest	Limited tags/hunter; possible limit on tags	No commercial tags
Very High	<1 % <sup>2</sup>	Consider Mandatory Bulls Only Harvest	No resident tags	No commercial tags

More Liberal Harvest Options (top)

More Conservative Harvest Options (bottom)

GN DOE

NWMB

Minister

# GN DOE Proposed Recommendations



Bathurst:

At this declining rate, biologically, the herd cannot sustain an harvest.

$$(19,700 \text{ caribou} \times 0.15\% \text{ harvest rate}) \times 100 = 30$$

NU TAH = 30 male

Herd Vulnerability Level	Recommended Acceptable Total Harvest (% of herd <sup>10</sup> )	Recommended Aboriginal Harvest	Recommended Resident Harvest	Recommended Commercial Harvest
Very Low	5 % or higher	Unrestricted, Either Sex Harvest	Limited tags/hunter	Limited commercial tags
Low	3-5 %	Unrestricted, Promote Bull Harvest	Limited tags/hunter	Limited commercial tags
Medium	2-3 %	Unrestricted, Promote Bull Harvest	Limited tags/hunter; possible limit on tags	Either no commercial tags or small numbers of tags
High	<2 %	Promote Conservation, Voluntary Bulls Only Harvest	Limited tags/hunter; possible limit on tags	No commercial tags
Very High	<1 % <sup>10</sup>	Consider Mandatory Bulls Only Harvest	No resident tags	No commercial tags

More Liberal Harvest Options (top half of table)  
More Conservative Harvest Options (bottom half of table)

GN DOE

NWMB

Minister

# GN DOE Next Steps

---



In January 2015,

- Consult with the affected communities on the adjusted new TAH recommendations.
  - GN DOE submitted proposed recommended TAH of 340 caribou for the Bluenose herd to NWMB board.
  - GN DOE submitted proposed recommended TAH of 30 caribou for the Bathurst herd to NWMB board.

Consensus?

The GN would like to seek HTOs and/KRWO support to these proposed recommendations .

- Submission to NWMB for their March meeting