

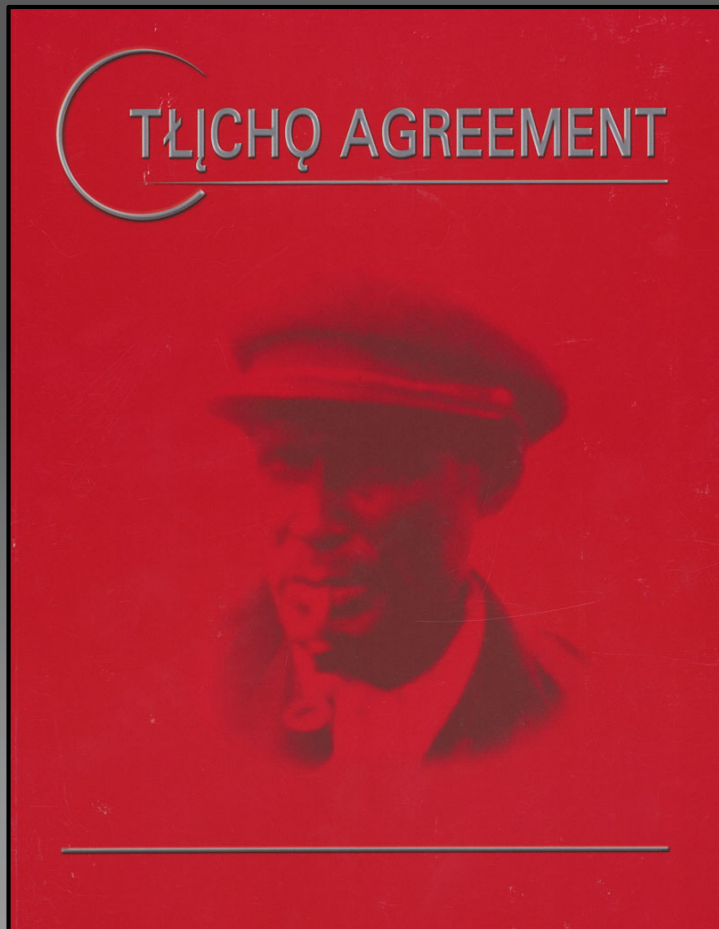


# The Wek'èezhìi Renewable Resources Board & 2019 Bathurst Caribou Herd Proceeding

Joseph Judas, Chair & Jody Pellissey, Executive Director  
NWMB Bathurst Caribou Public Hearing, Cambridge Bay  
March 5-6, 2020



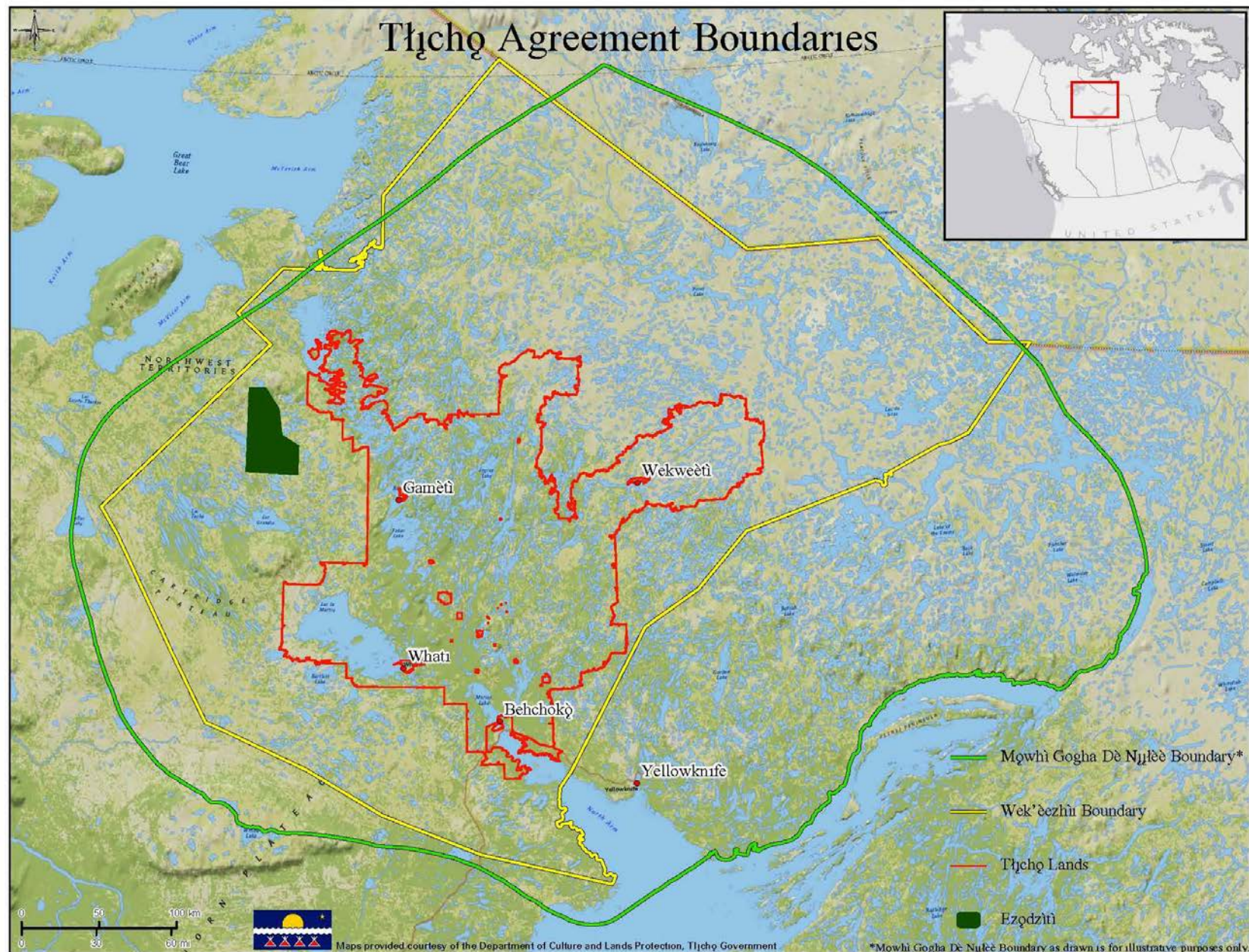
# Wek'èezhì Renewable Resources Board



- WRRB is a co- management board established by the Tłıchǫ Agreement
- Board acts in the public interest; considers the interests of all users in making decisions



# Tłıchǫ Agreement Boundaries





Working together to take care of wildlife,  
forests, plants and protected areas in  
Wek'èezhìi for present and future generations

ᐱᑦᑭᑦᑭᑦ ᐱᑦᑭᑦᑭᑦᑭᑦ ᑕᑦᑭᑦᑭᑦᑭᑦ, ᑕᑦᑭᑦᑭᑦ ᐱᑦᑭᑦ  
ᑕᑦᑭᑦᑭᑦ, ᐱᑦᑭᑦᑭᑦᑭᑦᑭᑦ ᑕᑦᑭᑦᑭᑦ ᐱᑦᑭᑦᑭᑦ ᑕᑦᑭᑦ  
Wek'èezhìi ᑕᑦᑭᑦ ᑕᑦᑭᑦᑭᑦᑭᑦ





# Considerations

- Inter-relatedness of wildlife, land and people
- Conservation and precautionary principle
- Use of best information available to inform decision making
  - Tłįchq knowledge
  - Scientific knowledge
  - Expert opinion

*“Strong Like Two People”*





# 2019 Bathurst Caribou Herd Proceeding

- *Joint Proposal on Management Actions for the Bathurst ʔekwò (Barren-ground caribou) Herd 2019-2021*
- Proposed actions: harvest, predators, habitat and land use, education, and research and monitoring







## Harvest

- The WRRB determined that a total allowable harvest of zero shall be continued for all users of the Bathurst caribou herd within Wek'èezhìi for 2019-2021
- Implications of emigration on the herd



# Predators

- Determination of sighting rates or predators and the criteria used to determine the annual targeted removal
- Completion of a biological and management feasibility assessment for grizzly bear and wolverine





# Education

- Discussion about priorities and solutions for food security
- Exchange of information about the reasons and factors for caribou declines





# Research & Monitoring



- Development of a herd-specific adaptative management framework with thresholds linked to specific management actions
- Collection of climate change observations during the Ekwò Nàxoède K'è program





**Users and managers must act now, in whatever ways possible, to protect the herd so future recovery may be possible**



# Thank you



**WRRB contact info:**  
**102A, 4504-49th Ave, Yellowknife**  
**[jpellissey@wrrb.ca](mailto:jpellissey@wrrb.ca), 867-873-5740**