

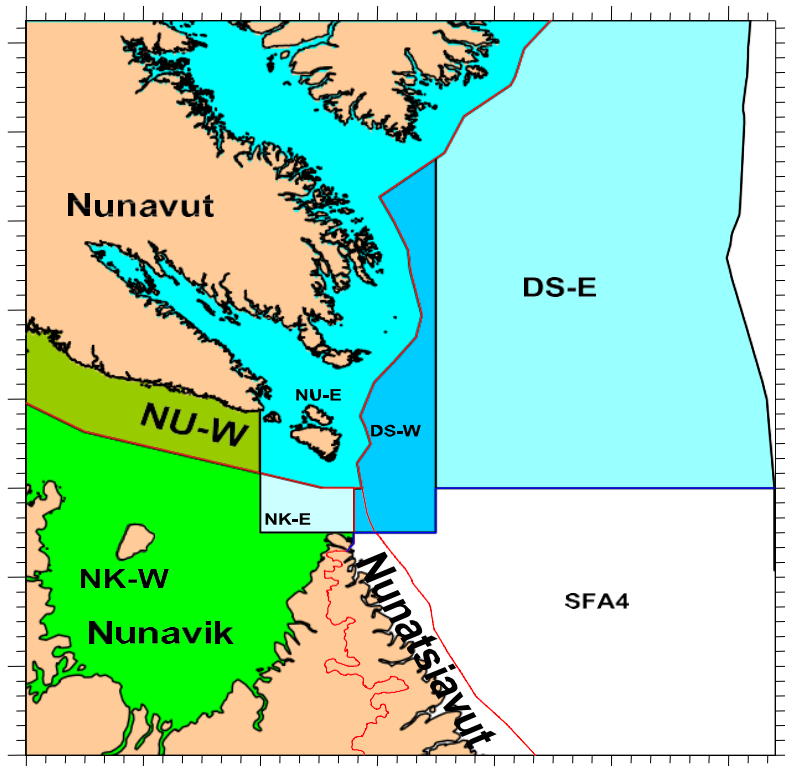
**SUBMISSION TO THE
NUNAVUT WILDLIFE MANAGEMENT BOARD
AND NUNAVIK MARINE REGION WILDLIFE BOARD**

FOR

Information: Decision: X Recommendation: X

Issue: Total Allowable Catch levels for Striped Shrimp (*Pandalus montagui*) for the 2026-27 fishing season in the Western and Eastern Assessment Zones, and Interim Allocations

Map: Blue – Eastern Assessment Zone; Green – Western Assessment Zone



Striped shrimp (Pandalus montagui)

Background

This briefing note presents the Nunavut Wildlife Management Board (NWMB), and the Nunavut Marine Region Wildlife Board (NMRWB), *i.e.*, the Boards, with the information necessary to provide decisions and recommendations to the Minister of Fisheries and Oceans Canada (DFO) for 2026-27 Striped Shrimp fisheries in the Western Assessment Zone (WAZ) and the Eastern Assessment Zone (EAZ). Science results from the 2025 DFO-Northern Shrimp Research Foundation and DFO multi-species surveys are now available, with science advice from the Canadian Science Advisory Secretariat (CSAS) peer review process for Striped Shrimp (*P. montagui*), provided at Appendix 1.

A meeting of the Northern Shrimp Advisory Committee (NSAC), followed by an Indigenous meeting occurred March 25-26, 2026. A summary of these meetings is provided at Appendix 2.

This briefing note presents the status of Striped Shrimp (*P. montagui*) stocks in the context of the Precautionary Approach (PA) framework and applies the Harvest Decision Rules (HDRs), supported by the Boards in 2024-25, for calculating TAC options.

WESTERN ASSESMENT ZONE (WAZ)

Fishery Profile

The fishery for *P. montagui* in the WAZ operates April 1 – March 31. Harvesting activity commences as early as May or June, subject to ice conditions.

The WAZ is divided into two management units, Nunavut West (NU-W) and Nunavik West (NK-W) (see map). These management units are located entirely within the Nunavut Settlement Area (NSA) and Nunavut Marine Region (NMR), respectively. The NWMB and NMRWB make decisions on management measures within their respective settlement areas and may make recommendations for adjacent management units.

P. montagui allocations in the NU-W management unit have been allocated to Nunavut fishing interests. Similarly, allocations in the NK-W management unit have been allocated to Nunavik fishing interests. Although no formal sharing arrangement exists, harvest level decisions in NU-W and NK-W have historically resulted in equal distribution of the overall TAC for each stock. A standing joint decision made by the NWMB and NMRWB on July 13, 2022, supports harvesting of these species in either management unit, regardless of settlement area boundaries.

A historical quota profile for the WAZ is provided at Appendix 4.

Science Advice

A summary of the CSAS peer review process to assess the status of the stocks that occurred in February 2026 is at Appendix 1. Stock status indicators for *P. montagui* in the WAZ for the past four years (2021/22-2024/25) are at Appendix 3.

The indices for *P. montagui* stocks have shown signs of high volatility, with no clear indication of mechanisms driving year-to-year fluctuations.

For *P. montagui*, eleven years of data are now available in the time series for the WAZ (2014-2024). The 2024 survey indicates the FB in the WAZ increased 7.7 % from the 2023 survey. The SSB in the WAZ increased 65.3 % from 2023 to 2024. Both of these indices are above their respective long-term means [*FB* 72,644 t; *SSB* 65,704 t].

2026-27 Management Considerations

P. montagui in the WAZ is estimated to be in the Healthy Zone of the PA Framework, above the USR with a greater than 99.9% probability and with biomass indicators above long-term means.

The 2025-26 TAC for *P. montagui* in the WAZ was 14,956 tonnes (t), which represents an exploitation rate (ER) of 18.1% if fully taken. Following application of the 2-Step HDR, the “re- start” option would be selected for 2026-27, yielding a TAC of 15,743 t (an increase of 5.3% from 2025-26), with a potential ER of 19.0 % (see calculation at Appendix 5). As of April 21, 2026 69% of the 2025-26 TAC had been harvested.

At the Northern Shrimp Advisory Committee Indigenous post-meeting on March 26, stakeholders advocated for a higher TAC than the HDR recommends, with an ER of up to 23%, given that the stock is in a healthy state and increasing, and favourable market conditions. Scenarios are illustrated below, for consideration.

Scenario	TAC (t)	ER (%)	% change in TAC from previous year
2-Step HDR (<i>recommended</i>)	15,743	19.0	+ 5.3
23% ER	19,009	23.0	+27.1

Recommendation: It is recommended that the Boards apply the 2-Step HDR to set the overall TAC (combined for NU-W and NK-W) for *P. montagui* at 15,743 t.

Summary of Request**Western Assessment Zone:**

1. Decisions on harvest levels for *P. montagui* in the NU-W (within the NSA) and NK-W (within the NMR) management units, respectively.

2. Recommendations on the overall TAC for *P. montagui* in the WAZ.

Summary of requested decisions and recommendations, WAZ.

Area (Management Unit)	<i>P. montagui</i>
NSA (NU-W)	Harvest level decision NWMB <i>(Recommendation NMRWB)</i>
NMR (NK-W)	Harvest level decision NMRWB <i>(Recommendation NWMB)</i>
<i>TOTAL (WAZ)</i>	<i>TAC recommendation (combined total of decisions) NWMB and NMRWB</i>

EASTERN ASSESMENT ZONE (EAZ)

Fishery Profile

The fishery for *P. montagui* in the EAZ operates April 1 – March 31. Harvesting activity commences as early as May or June, subject to ice conditions.

The EAZ is divided into four management units: Nunavut East (NU-E), Nunavik East (NK-E), and the offshore Davis Strait West (DS-W) and Davis Strait East (DS-E) areas (see map). These management units are located partially within and adjacent to the NSA and NMR. The NWMB and NMRWB make decisions on management measures within their respective settlement areas and may make recommendations for the adjacent Davis Strait management units. *P. montagui* is a directed species in NU/NK-E and is a bycatch species in the Davis Strait Northern Shrimp (*P. borealis*) directed fishery.

P. montagui allocations in the NU-E management unit have been allocated to Nunavut fishing interests. Similarly, allocations in the NK-E management unit have been allocated to Nunavik fishing interests. Although no formal sharing arrangement exists, DFO observes a long-standing distribution of allocations between NU-E and NK-E management units at approximately 70:30 per cent for *P. montagui*. A standing joint decision made by the NWMB and NMRWB on July 13, 2022, supports harvesting of these species in either management unit, regardless of settlement area boundaries.

There are no pre-existing arrangements for the distribution of quota between management units in the EAZ. However, allocation of quotas between the settlement areas (NU/NK-E) and the offshore Davis Strait areas must distribute fishing effort throughout the Zone and avoid concentrated effort in a single productive area (e.g., Resolution Island).

A historical quota profile for the EAZ is provided at Appendix 4.

Science Advice

A summary of the CSAS peer review process to assess the status of the stocks that occurred in March 2025 is at Appendix 1. Stock status indicators for *P. montagui* in the EAZ for the past four years (2021/22-2024/25) are at Appendix 3.

The indices for *P. montagui* stocks have shown signs of high volatility, with no clear indication of mechanisms driving year-to-year fluctuations.

For *P. montagui*, sixteen years of data are now available in the time series for the EAZ (2009-2024). The 2024 survey indicates the FB in the EAZ increased 11.2 % from the 2023 survey. The SSB in the EAZ increased 97.5% from 2023 to 2024. Both of these indices are above their respective long-term means [*FB 15,724 t*; *SSB 13,488 t*].

2024-25 Management Considerations

In 2025, the *P. montagui* stock in the EAZ was estimated to be in the Critical Zone of the PA Framework, below the limit reference point (LRP) with a 59 % probability. *P. montagui* has previously exhibited stock movement across the EAZ/WAZ boundary, which may be responsible for the decrease observed in 2025, and could be a short-term trend.

The 2025-26 TAC for *P. montagui* in the EAZ was 2,469 t, of which 338 t were caught (14%), of which 119 t was bycatch by the offshore fleet. The Boards and the Minister decided to deviate from using the 2-Step HDR in establishing the 2025-26 TAC. A rollover of the current TAC in 2026-27 would result in a potential ER of 74.9%. Given that the stock is estimated to be in the Critical Zone, the HDR would be applied without the second step, yielding a TAC of 330 t with a potential ER of 10.0 %. Given uncertainty in stock status potentially due to short-term stock movement, industry recommended applying the 2-step HDR to set the TAC at 1,578t, which represents a potential ER of 47.8% (see calculation at Appendix 5). Scenarios are illustrated below, for consideration.

Scenario	TAC (t)	ER (%)	% change in TAC from previous year
Rollover 2025-26 TAC	2,469	74.9	0
HDR	330	10.0	-86.6
2-step HDR (<i>recommended</i>)	1,578	47.8	-36.1

For the Boards' consideration: At previous NSAC meetings, in discussing TACs and quotas for *P. montagui* in the EAZ, the offshore fleet noted that in Davis Strait (where they hold a bycatch designation for *P. montagui*) they require access to 920 t in order to be able to prosecute their *P. borealis* allocations.

Recommendation: It is recommended that the Boards apply the 2-Step HDR to set the overall TAC (combined for Davis Strait East/West, NU-E and NK-E) for *P. montagui* at 1,578t.

Summary of Request

Eastern Assessment Zone:

1. Decisions on harvest levels for *P. montagui* in the NU-E (within the NSA) and NK-E (within the NMR) management units, respectively.
2. Recommendations on the overall TAC for *P. montagui* in the EAZ.

Summary of requested decisions and recommendations, EAZ.

Area (Management Unit)	<i>P. montagui</i>
NSA (NU-E)	Harvest level decision NWMB <i>(Recommendation NMRWB)</i>
NMR (NK-E)	Harvest level decision NMRWB <i>(Recommendation NWMB)</i>
DS-E	TAC recommendation NWMB & NMRWB
DS-W	
TOTAL (EAZ)	<i>TAC Recommendation NWMB & NMRWB</i>

Interim Allocations

At the NSAC Indigenous meeting in March 2025, Northern Coalition, Nunavut Fisheries Association, Newfoundland Resources Ltd., Qikiqtaaluk Corporation, Makivvik Corporation, and Baffin Fisheries Coalition requested that the maximum allowable interim quota that could be released from Nunavut and Nunavik allocations in both the WAZ and EAZ be increased from 50 %, as per previous Boards' decisions and recommendations, and the Minister's decision in 2019, to 75 % moving forward.

Given that the Nunavut and Nunavik *P. montagui* allocations occur within the Nunavut Settlement Area and Nunavik Marine Region, in alignment with NU and NK industry requests, DFO is seeking decisions and recommendations, as appropriate, from the Boards to establish the maximum allowable interims to be released at 75 % of the previous year's quota (up from the previously approved level of 50 %).

Importantly, given that fishing in the NU and NK management units could begin as early as May, the Department requests that decisions and recommendations on interim quotas be taken separately from TAC decisions and recommendations and communicated to the Department at the earliest convenience.

Prepared by: Dirk Algera, Fisheries Resource Management, Fisheries and Oceans Canada

Date: May 6, 2025

APPENDIX 1Fisheries and Oceans
CanadaPêches et Océans
CanadaEcosystems and
Oceans ScienceSciences des écosystèmes
et des océans**Newfoundland and Labrador Region
Arctic Region****Canadian Science Advisory Secretariat
Science Advisory Report 2025/nnn****STOCK ASSESSMENT FOR STRIPED SHRIMP (*PANDALUS MONTAGUI*) IN SHRIMP FISHING AREA 4, THE EASTERN ASSESSMENT ZONE, AND WESTERN ASSESSMENT ZONE FOR THE 2025–26 FISHING SEASON****CONTEXT**

Fisheries and Oceans Canada (DFO) Fisheries Resource Management has requested an assessment of Striped Shrimp (*Pandalus montagui*) stocks in Shrimp Fishing Area 4 (SFA 4), the Eastern Assessment Zone (EAZ), and Western Assessment Zone (WAZ) as the basis for harvest advice for the 2025–26 fishing season.

This Science Advisory Report is from the March 10–11, 2025 Multi-Regional Peer Review meeting on Stock Assessment for Striped Shrimp in SFA 4, the EAZ, and the WAZ for the 2025–26 fishing season. Additional publications from this meeting will be posted on the [Fisheries and Oceans Canada \(DFO\) Science Advisory Schedule](#) as they become available.

SCIENCE ADVICE**Status**

- **SFA 4:** In 2024, Striped Shrimp fishable biomass (FB_{pop}) was estimated to be 2.8 times the LRP for SFA 4. The population-wide potential predator index is at a time-series high in 2024, but other indices of stock health showed no cause for concern. Striped Shrimp in SFA 4 is considered in a healthy state.
- **EAZ:** In 2024, Striped Shrimp was estimated to be in the Healthy Zone of the PA Framework, above the USR with a 91.5% probability.
- **WAZ:** In 2024, Striped Shrimp was estimated to be in the Healthy Zone of the PA Framework, above the USR with a 98.0% probability.

Trends

- **SFA 4:** In 2024, the SSB index increased by 6% (to 25,000 t) since 2023, and is slightly above the long-term mean (2005–23). The SFA 4-specific FB index has decreased by 26% (to 28,600 t) since 2023, and is slightly below the long-term mean (29,600 t).
- **EAZ:** The female SSB and FB indices in the EAZ have increased since 2023, by 97.5% (to 13,488 t) and 11.2% (to 15,724 t), respectively. These indices are above the long-term mean (2009–23) and reference period mean (2009–19).
- **WAZ:** The female SSB and FB indices in the WAZ have increased since 2023, by 65.3% (to 65,704 t) and 7.7% (to 72,644 t), respectively. These indices are above the long-term mean (2014–23) and reference period mean (2014–19).

Canada^{🇨🇦}

**Newfoundland and Labrador Region
Arctic Region**

**SFA 4, EAZ, and WAZ Striped Shrimp
Stock Assessment in 2024**

Ecosystem and Climate Change Considerations

- In SFA 4, the EAZ, and WAZ, summer ocean bottom temperatures for 2024 were close to average to slightly warmer.
- The potential predator index representing the assessment area has increased in recent years to a time-series high in 2024.

Stock Advice

- **SFA 4:** The preliminary ERI for 2024/2025 was 10.4%, with 74% of the bycatch limit taken. If the full bycatch limit is taken in 2024/2025, the ERI will be 14.1%.
- **EAZ:** The preliminary ERI for 2024/2025 in the EAZ was 1.6%, with 11.1% of the TAC taken. If the full TAC is taken in 2024/2025, the ERI will be 14.1%.
- **WAZ:** The preliminary ERI for 2024/2025 in the WAZ was 6.0%, with 28% of the TAC taken. If the full TAC is taken in 2024/2025, the ERI will be 21.2%.

BASIS FOR ASSESSMENT

Assessment Details

Year Assessment Approach was Approved

The assessment for the EAZ and WAZ follows the reference points developed in 2020 for the Precautionary Approach (PA) framework for Striped Shrimp (DFO 2020). The assessment for SFA 4 follows the assessment framework developed in 2023 (Baker et al. 2024).

Assessment Type

Full Assessment

Most Recent Assessment Date

1. Last Full Assessment: 2023 (Fulton et al. 2024, Le Corre et al. 2024, DFO 2024a)
2. Last Interim-Year Update: January (SFA 4) and February (EAZ and WAZ) 2024 (DFO 2024b, DFO 2024c, DFO 2024d).

Stock Assessment Approach

1. Broad category: Index-based
2. Specific category: Index-based (including fishery-dependent and fishery-independent indices)

In the EAZ and WAZ, the assessment follows the framework established by DFO (2020); catch data from scientific surveys are spatially expanded to produce an abundance index for fishable biomass (FB) and female spawning stock biomass (SSB). Both male and female shrimp with a carapace length greater than 17 mm are considered in the calculation of the FB index, while female shrimp of any size form the basis of the SSB index.

The assessment of SFA 4 uses a spatiotemporal model to estimate fishable biomass for the Striped Shrimp population as a whole (i.e., EAZ, WAZ, and SFA 4 combined) (Baker et al. 2024). In addition, the framework for SFA 4 examines a potential predator index, total egg production, and a SFA 4-specific FB index calculated using Ogive Mapping methodology.

**Newfoundland and Labrador Region
Arctic Region**

**SFA 4, EAZ, and WAZ Striped Shrimp
Stock Assessment in 2024**

Ecosystem and Climate Change Assessment Approach

Ocean bottom temperature and trends were considered. Biomass of key predators is integrated into the SFA 4 assessment framework and examined for the whole assessment area.

Stock Structure Assumption

SFA 4, EAZ, and WAZ are management-based stock units. Striped Shrimp stocks in these units are biologically connected through larval dispersal (Le Corre et al. 2020).

Reference Points

Table 1. Reference points for Striped Shrimp in the Eastern Assessment Zone and Western Assessment Zone.

Reference Point	Description	EAZ	WAZ
Limit Reference Point (LRP):	40% of the geometric mean of female spawning stock biomass (SSB) over the productive period (2009–19 for EAZ, 2014–19 for WAZ), a proxy for BMSY, DFO (2020).	3,100 t	12,300 t
Upper Stock Reference (USR):	80% of the geometric mean of female spawning stock biomass (SSB) over the productive period (2009–19 for EAZ, 2014–19 for WAZ), a proxy for BMSY, DFO (2020).	6,100 t	24,600 t
Removal Reference (RR):	N/A	-	-
Target (TRP):	N/A	-	-

In SFA 4, an LRP for Striped Shrimp based on the combined survey data time series (2005–22) of SFA 4, EAZ, and WAZ was developed from a spatiotemporal model that created a new FB index (FB_{pop}) to determine the stock status. The LRP for Striped Shrimp in SFA 4 is the average of the following metrics:

- the lowest FB_{pop} at which the stock increased and remained above the geometric mean for a period of at least three years,
- the lowest observed FB_{pop} between 2005 and 2022, and
- 40% of the geometric mean of the FB_{pop} index from 2005 to 2022.

In addition to reporting on the status of the stock in relation to the LRP, three additional indicators of stock health are reported during each assessment: potential predator index, total egg production index, and SFA 4-specific fishable biomass index. There is no USR for SFA 4.

Data

- Northern Shrimp Research Foundation (NSRF) – DFO collaborative annual trawl survey (2005–24): 2005–24 for SFA 4, 2009–24 for EAZ, 2014–24 for WAZ.

**Newfoundland and Labrador Region
Arctic Region**

**SFA 4, EAZ, and WAZ Striped Shrimp
Stock Assessment in 2024**

- Atlantic Quota Monitoring System (AQMS – formerly known as the Canadian Atlantic Quota Report (CAQR); 2010–2024/2025).
- Reported commercial catch data (1979–2009)
- At-sea observer program (1979–2025)

Data changes:

- Commercial catch data for 2024/2025 are considered incomplete as the season is not officially closed until March 31, 2025. AQMS data for SFA 4 were pulled on February 2, 2025. AQMS data for EAZ and WAZ were pulled on January 15, 2025.

ASSESSMENT

Historical and Recent Stock Trajectory and Trends – Shrimp Fishing Area 4

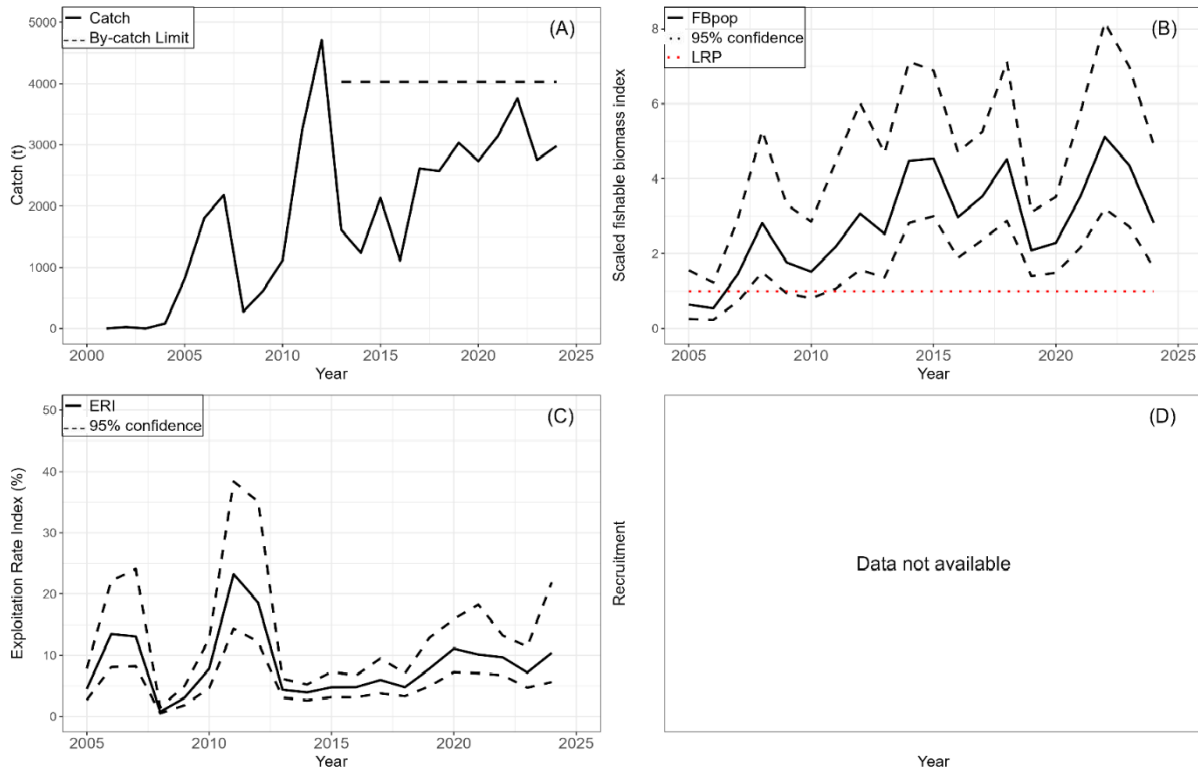


Figure 1. Shrimp Fishing Area 4 stock trends: (A) Catch and By-catch Limit, (B) FB_{pop} in relation to the Limit Reference Point, (C) Exploitation Rate Index (Fisheries catch relative to SFA 4-specific fishable biomass), (D) Recruitment (data not available).

**Newfoundland and Labrador Region
Arctic Region**

**SFA 4, EAZ, and WAZ Striped Shrimp
Stock Assessment in 2024**

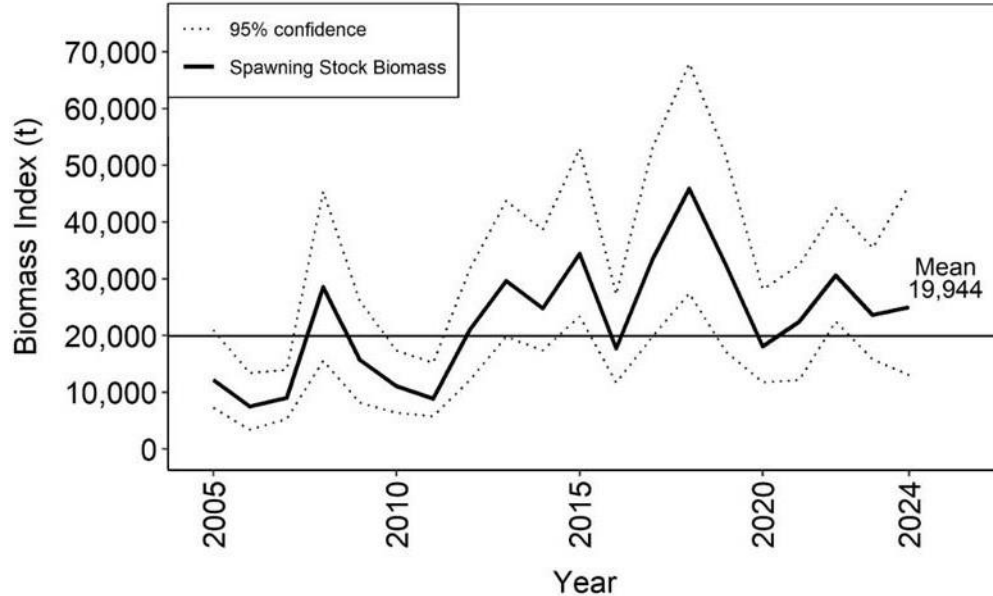


Figure 2. Shrimp Fishing Area 4 spawning stock biomass with 95% confidence interval from 2005 to 2024. The solid horizontal line represents the geometric mean from 2005 to 2023.

Biomass

FB and SSB indices varied without trend in recent years. There was a 26% decline in FB from 2023 to 2024 (2023: 38,400 t; 2024: 28,600 t), and a 6% increase in SSB (to 25,000 t) in 2024 (Figure 2). However, there was a 68% decline in male biomass (to 6,100 t), the second lowest value in the timeseries.

Fishery

Catch in SFA 4 has varied without trend around 3,000 t annually from 2017–24 (Figure 1a, Table 2). The preliminary catch in 2024/2025, as of February 2, 2025, was 2,981 t (74% of the bycatch quota of 4,033 t).

Exploitation

The exploitation rate index (ERI) ranged between 0.8% and 23.3% from 2005/06 to 2023/24 and the preliminary ERI was 10.4% in 2024/25 (Figure 1c). If the full bycatch limit is taken in 2024/25, the ERI will be 14.1%.

Current Status

The Striped Shrimp stock in SFA 4 is currently 2.8 times the established LRP. The population-wide potential predator index increased by 62% from 2023, and was at a time-series high in 2024. Other indices of stock health, including population-wide total egg production index and SFA 4-specific FB index showed no cause for concern. Although there is no USR for this stock, Striped Shrimp in SFA 4 is considered in a healthy state.

Newfoundland and Labrador Region
Arctic Region

SFA 4, EAZ, and WAZ Striped Shrimp
Stock Assessment in 2024

Historical and Recent Stock Trajectory and Trends – Eastern Assessment Zone

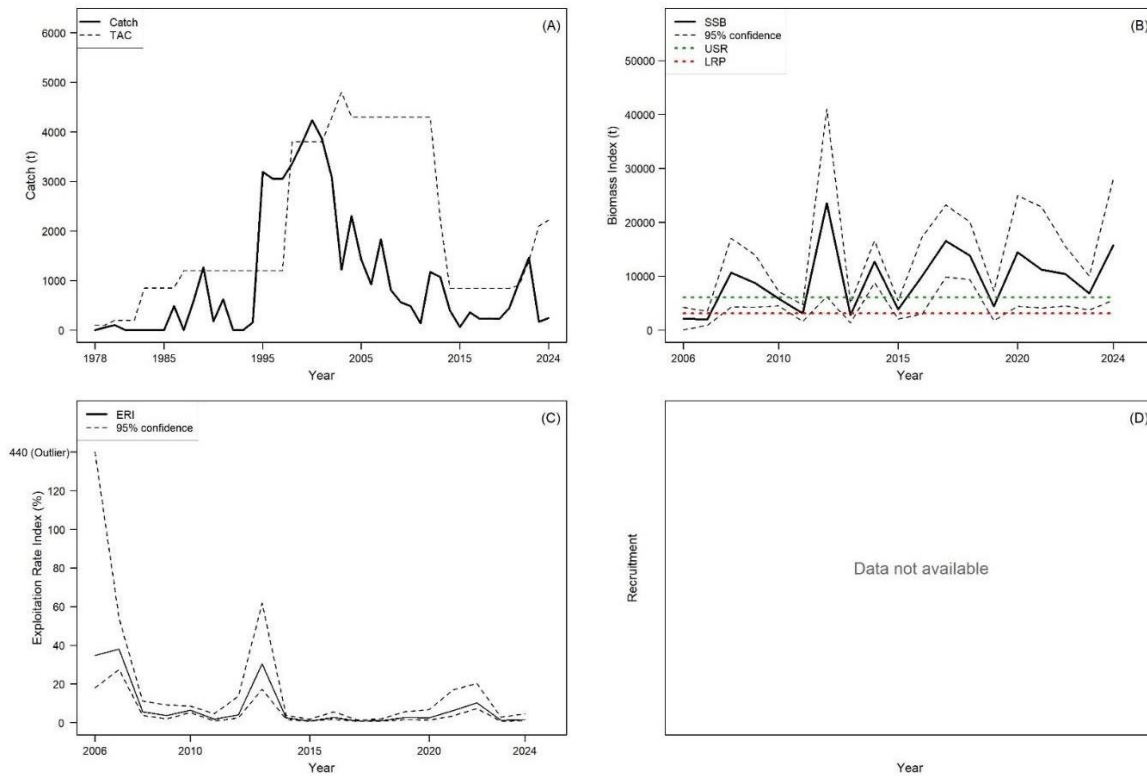


Figure 3. Eastern Assessment Zone stock trends: (A) Catch and Total Allowable Catch (TAC), (B) Spawning Stock Biomass (SSB) in relation to the Limit Reference Point (LRP; 3,100 t) and Upper Stock Reference (USR; 6,100 t), (C) Exploitation Rate Index (Fisheries catch relative to fishable biomass), (D) Recruitment (data not available).

**Newfoundland and Labrador Region
Arctic Region**

**SFA 4, EAZ, and WAZ Striped Shrimp
Stock Assessment in 2024**

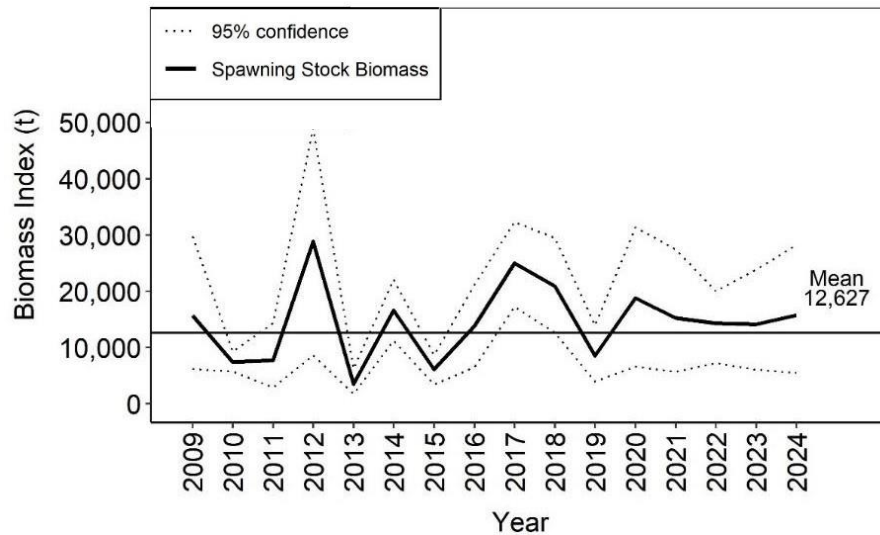


Figure 4: Eastern Assessment Zone fishable biomass index with 95% confidence interval from 2009 to 2024. The displayed mean is the geometric mean from 2009 to 2023.

Biomass

Both the FB and SSB indices varied without trend in recent years. The FB in 2024 (15,724 t) was above the long term geometric mean and increased 11.2% from 2023 (Figure 4). The SSB in 2024 (13,488 t) increased 97.5% from 2023 (Figure 3b).

Biological Indicators

Mean female and male carapace length have demonstrated high variability in recent years and declined steeply in 2024 compared to 2023 to some of the lowest values in the time-series. Similarly, in 2024, the length at 50% male-to-female transition declined to below the previous time-series low. If these trends continue this could have negative impacts on stock productivity.

Fishery

Catch in the EAZ has varied without trend, but has remained under 1,000 t most years since the beginning of the current time series of 2009–24 (Figure 3a, Table 2). The preliminary catch in 2024/2025, as of January 15, 2025, was 247 t (11.1% of the TAC of 2,216 t).

Exploitation

The preliminary exploitation rate index in 2024/25 was 1.6% (Figure 3c), with a potential exploitation rate of 14.1% should the entire 2024/25 TAC of 2,216 t be taken.

Current Status

The Striped Shrimp stock in the EAZ is currently above the USR with 91.5% probability. The stock is in the Healthy Zone of the PA Framework.

Newfoundland and Labrador Region
Arctic Region

SFA 4, EAZ, and WAZ Striped Shrimp
Stock Assessment in 2024

Historical and Recent Stock Trajectory and Trends – Western Assessment Zone

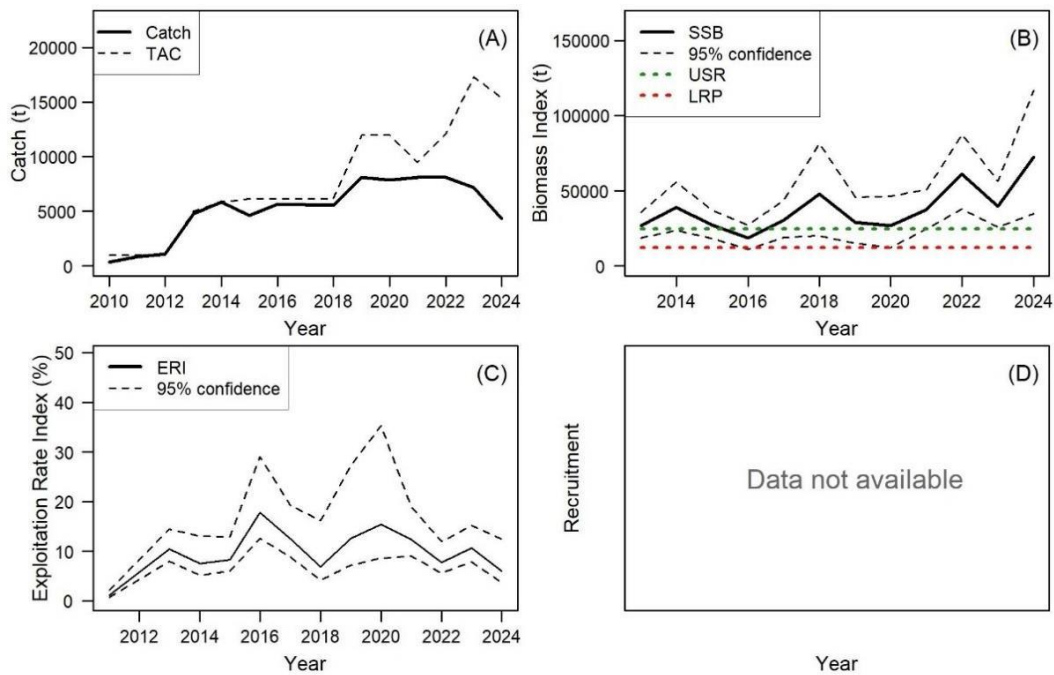


Figure 5. Western Assessment Zone stock trends: (A) Catch and Total Allowable Catch, (B) Spawning Stock Biomass (SSB) in relation to the Limit Reference Point (LRP; 12,300 t) and Upper Stock Reference (USR; 24,600 t), (C) Exploitation Rate Index (Fisheries catch relative to fishable biomass), (D) Recruitment (data not available).

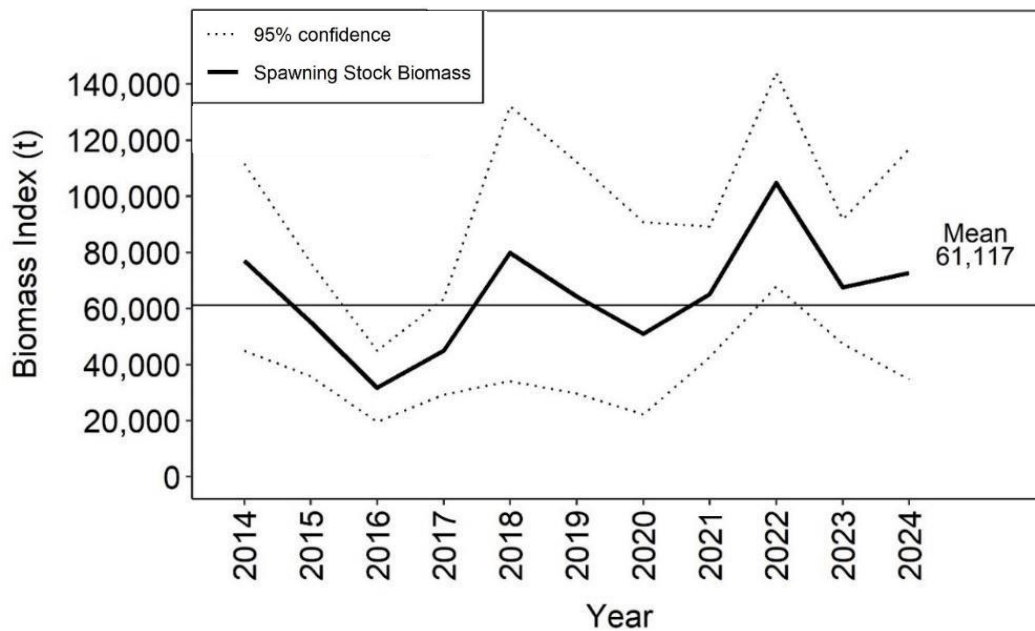


Figure 6. Western Assessment Zone fishable biomass index with 95% confidence interval from 2009 to 2024. The displayed mean is the geometric mean from 2014 to 2023.

**Newfoundland and Labrador Region
Arctic Region**

**SFA 4, EAZ, and WAZ Striped Shrimp
Stock Assessment in 2024**

Biomass

Both the FB and SSB indices were on a slight upward growth trend in recent years. The FB in 2024 (72,644 t) was above the long-term geometric mean and increased 7.7% from 2023 (Figure 6). The SSB in 2024 (65,704 t) increased 65.3% from 2023 (Figure 5b).

Biological Indicators

Mean female and male carapace length have demonstrated high variability in recent years and declined steeply in 2024 compared to 2023 to some of the lowest values in the time-series. Similarly, in 2024, the length at 50% male-to-female transition declined substantially to below the previous time-series low. If these trends continue this could have negative impacts on stock productivity.

Fishery

Catch in the WAZ has varied over time. From 2015 to 2018, catch varied without trend around 5,000 t. From 2019 to 2023, catch increased to around 8,000 t per year (Figure 5a, Table 2). The preliminary catch in 2024/2025, as of January 15, 2025, was 4,353 t (28.3% of the TAC of 15,384 t).

Exploitation

The preliminary exploitation rate index in 2024/25 was 6.0% (Figure 5c), with a potential exploitation rate of 21.2% should the entire 2024/25 TAC of 15,384 t be taken.

Current Status

The Striped Shrimp stock in the WAZ is currently above the USR with 98.0% probability. The stock is in the Healthy Zone of the PA Framework.

History of Landings

*Table 2. Nominal reported catches and quotas (in tonnes) for the Eastern Assessment Zone, Western Assessment Zone, and Shrimp Fishing Area 4 for Striped Shrimp from the 2014/2015 fishing season to the 2024/2025 fishing season. *Catch based on AQMS as of January 15, 2025 for EAZ and WAZ, and February 2, 2025 for SFA 4. Since the fishery is still open the catch is preliminary for 2024/2025.*

Fishery Year	EAZ		WAZ		SFA 4	
	Catch (t)	TAC (t)	Catch (t)	TAC (t)	Catch (t)	Quota (t)
2024/2025*	247	2,216	4,353	15,384	2,981	4,033
2023/2024	173	2,100	7,194	17,282	2,753	4,033
2022/2023	1,460	1,400	8,128	12,096	3,755	4,033
2021/2022	965	902	8,106	9,470	3,146	4,033
2020/2021	447	840	7,841	11,975	2,734	4,033
2019/2020	225	840	8,114	11,975	3,034	4,033
2018/2019	234	840	5,531	6,138	2,571	4,033
2017/2018	233	840	5,609	6,138	2,611	4,033
2016/2017	358	840	5,660	6,138	1,112	4,033
2015/2016	59	840	4,616	6,138	2,134	4,033
2014/2015	401	840	5,836	5,860	1,235	4,033

**Newfoundland and Labrador Region
Arctic Region**

**SFA 4, EAZ, and WAZ Striped Shrimp
Stock Assessment in 2024**

Ecosystem and Climate Change Considerations

Ocean bottom temperatures across the assessment area in 2024 were close to average to slightly warmer. Pandalid shrimp are known to be important prey for a variety of fishes, e.g., Greenland Halibut (*Reinhardtius hippoglossoides*), Roughhead Grenadier (*Macrourus berglax*), skates (*Rajidae* spp.) and redfish (*Sebastes* spp.). Such predators can be significant drivers of biomass and population dynamics in their prey. The amount of shrimp consumed by these predators varies in response to predator stock size, spatial overlap, and alternative prey options. The predator index across the assessment area has increased in recent years.

Stock Advice

Projections or simulations have not been developed for this assessment as it is index-based and data driven.

PROCEDURE FOR INTERIM-YEAR UPDATES

These stocks are assessed every two years, with an interim-year update in the alternating years.

SOURCES OF UNCERTAINTY

Hudson Strait is a highly dynamic system with strong tidal currents and mixing. With speeds up to five knots, the strong currents could result in quick shifts in shrimp distribution and catchability. Shrimp could be transported great distances in a relatively short period of time in and out of the WAZ, EAZ, and SFA 4 to the south. This is most likely the cause of the wide fluctuations in biomass observed within and among assessment areas, even within the same year. Assessing only a subset of a larger population is a source of uncertainty in determining the true status of a resource.

The relative catchabilities for the four research vessels (*Cape Ballard*, *Aqviq*, *Kinguk*, and *Katsheshuk II*) that have been used throughout the time series of the NSRF-DFO collaborative survey and the relative catchability between the vessels is unknown.

Research Recommendations

Given the recognition that SFA 4, EAZ, and WAZ likely do not represent separate populations, assessment units for these stocks should be reevaluated.

LIST OF MEETING PARTICIPANTS

NAME	AFFILIATION
Bruce Chapman	Canadian Association of Prawn Producers
Joclyn Paulic	DFO Arctic - CSAS
Christi Friesen	DFO Arctic - Resource Management
Kevin Hedges	DFO Arctic - Science
Daniel Enright	DFO Arctic - Science
Wojciech Walkusz	DFO Arctic - Science

**Newfoundland and Labrador Region
Arctic Region**
**SFA 4, EAZ, and WAZ Striped Shrimp
Stock Assessment in 2024**

NAME	AFFILIATION
Robert Deering	DFO CSAS-IA
Karen Dwyer	DFO NCR - CSAS
Dirk Algera	DFO NCR - Resource Management
Brian Lester	DFO NCR - Resource Management
Jorge Negrin Dastis	DFO NCR - Resource Management
Nicholas Duprey	DFO NCR - Science
Susan Thompson	DFO NCR - Science
Hilary Rockwood	DFO NL - CSAS
Aaron Adamack	DFO NL - Science
Nicolas Le Corre	DFO NL - Science
Krista Baker	DFO NL - Science
David Belanger	DFO NL - Science
Kaitlyn Charmley	DFO NL - Science
William Coffey	DFO NL - Science
Elizabeth Coughlan	DFO NL - Science
Jonathan Coyne	DFO NL - Science
Charmain Hamilton	DFO NL - Science
Michael Hurley	DFO NL - Science
Kyle Lefort	DFO NL - Science
Chelsea Malayny	DFO NL - Science
Rachel Morrison	DFO NL - Science
Darrell Mullooney	DFO NL - Science
Hannah Munro	DFO NL - Science
Julia Pantin	DFO NL - Science
Erika Parrill	DFO NL - Science
Kathleen Ryan	DFO NL - Science
Nancy Soontiens	DFO NL - Science
Darren Sullivan	DFO NL - Science
Bruce Wells	DFO NL - Science
Erin Carruthers	Fish, Food, and Allied Workers Union
Heather Starkes	Fish, Food, and Allied Workers Union
Chris Rose	Fish, Food, and Allied Workers Union

**Newfoundland and Labrador Region
Arctic Region**

**SFA 4, EAZ, and WAZ Striped Shrimp
Stock Assessment in 2024**

NAME	AFFILIATION
Taylor Sheppard	Government of Newfoundland and Labrador
Sean Cox	Landmark Fisheries
Tony Wright	Makivvik Corporation
Natalie Perrin	Marine Institute
Brian McNamara	Newfoundland Resources Ltd.
Alastair O'Rielly	Northern Coalition
Todd Broomfield	Nunatsiavut Government
Rob Coombs	Nunatukavut Community Council
Frankie Jean-Gagnon	Nunavik Marine Region Wildlife Board
Derek Butler	Nunavut Fisheries Association
Brynn Devine	Oceans North
Ron Johnson	Torngat Fisheries Co-op
Tanya Prystay	Torngat Wildlife, Plants & Fisheries Secretariat
Piero Calosi	Université du Québec à Rimouski

SOURCES OF INFORMATION

- Baker, K.D., Anderson, S.C., Coffey, W., Walkusz, W., Mullowney, D.R.J., and Skanes, K.R. 2024. [Identifying a Limit Reference Point for Striped Shrimp \(*Pandalus montagui*\) in Shrimp Fishing Area 4](#). DFO Can. Sci. Advis. Sec. Res. Doc. 2024/067. iv + 27 p
- DFO. 2020. [Science Advice on Limit Reference Points for Northern Shrimp \(*Pandalus borealis*\) and Striped Shrimp \(*Pandalus montagui*\) in the Eastern and Western Assessment Zones](#). DFO Can. Sci. Advis. Sec. Sci. Advis. Rep. 2020/053.
- DFO. 2024a. [Assessment of Northern Shrimp \(*Pandalus borealis*\) and Striped Shrimp \(*Pandalus montagui*\) in Shrimp Fishing Area \(SFA\) 4 in 2022 and Evaluation of a Proposed Limit Reference Point \(LRP\) for Striped Shrimp in SFA 4](#). DFO Can. Sci. Advis. Sec. Sci. Advis. Rep. 2024/014.
- DFO. 2024b. [Stock Status Update of Shrimp Fishing Area 4 Striped Shrimp \(*Pandalus montagui*\) in 2023](#). DFO Can. Sci. Advis. Sec. Sci. Resp. 2024/028.
- DFO. 2024c. [Update of Stock Status Indicators for Northern Shrimp, *Pandalus borealis*, and Striped Shrimp, *Pandalus montagui*, in the Eastern Assessment Zone, February 2024](#). DFO Can. Sci. Advis. Sec. Sci. Resp. 2024/017.
- DFO. 2024d. [Update of Stock Status Indicators for Northern Shrimp, *Pandalus borealis*, and Striped Shrimp, *Pandalus montagui*, in the Western Assessment Zone, February 2024](#). DFO Can. Sci. Advis. Sec. Sci. Resp. 2024/016.

**Newfoundland and Labrador Region
Arctic Region****SFA 4, EAZ, and WAZ Striped Shrimp
Stock Assessment in 2024**

- Fulton, S., Walkusz, W. Atchison, S., and Cyr, F. 2024. [Information to support the assessment of northern shrimp, *Pandalus borealis* and striped shrimp, *Pandalus montagui*, in the Eastern and Western Assessment Zones, February 2023](#). DFO Can. Sci. Advis. Sec. Res. Doc. 2024/016.
- Le Corre, N., Pepin, P., Burmeister, A., Walkusz, W., Skanes, K., Wang, Z., Brickman, D., and Snelgrove, P.V.R. 2020. [Larval connectivity of northern shrimp \(*Pandalus borealis*\) in the Northwest Atlantic](#). Can. J. Fish. Aquat. Sci. 77(8): 1332–1347.
- Le Corre, N., Skanes, K.R., Baker, K.D., Sullivan, D., Coffey, W., Cyr, F., Belanger, D., Morrissey, K., and Malayny, C. 2024. [Assessment of Northern Shrimp \(*Pandalus borealis*\) and Striped Shrimp \(*Pandalus montagui*\) in Shrimp Fishing Area 4 in 2022](#). DFO Can. Sci. Advis. Sec. Res. Doc. 2024/036. v + 82 p.

Newfoundland and Labrador Region
Arctic Region

SFA 4, EAZ, and WAZ Striped Shrimp
Stock Assessment in 2024

THIS REPORT IS AVAILABLE FROM THE:

Center for Science Advice (CSA)
Newfoundland and Labrador Region
Fisheries and Oceans Canada
P.O. Box 5667
St. John's, NL
A1C 5X1

E-Mail: DFONLCentreforScienceAdvice@dfo-mpo.gc.ca

Internet address: www.dfo-mpo.gc.ca/csas-sccs/

ISSN 1919-5087

ISBN 978-0-660-xxxxx-x Cat. No. Fs70-6/2025-nnnE-PDF

© His Majesty the King in Right of Canada, as represented by the Minister of the
Department of Fisheries and Oceans, 2025

This report is published under the [Open Government Licence - Canada](#)



Correct Citation for this Publication:

DFO. 2025. Stock Assessment for Striped Shrimp (*Pandalus montagui*) in Shrimp Fishing Area 4, the Eastern Assessment Zone, and Western Assessment Zone for the 2025–26 Fishing Season. DFO Can. Sci. Advis. Sec. Sci. Advis. Rep. 2025/nnn.

Aussi disponible en français :

MPO. 2025. << insérez le titre ici – il doit correspondre exactement à celui de la page couverture, mais en lettres minuscules >>. Secr. can. des avis sci. du MPO. Avis sci. 2025/nnn.

APPENDIX 2 DRAFT NSAC Record of Discussion

Northern Shrimp Advisory Committee (NSAC) March 25, 2026.

Welcome and Opening Remarks

Todd Williams, DFO Resource Management (RM), Ottawa, Chair, Northern Shrimp Advisory Committee (NSAC), outlined the Agenda for the meeting.

- Members did not voice any comments or concerns on the Agenda items

Science – Stock Updates

Stock updates were provided for Northern shrimp (*Pandalus borealis*) in the North and South Stock Assessment Regions (NSAR and SSAR) and Striped shrimp (*P. montagui*) in Shrimp Fishing Area (SFA) 4 and the Eastern and Western Assessment Zones (EAZ and WAZ).

Northern shrimp (*P. borealis*)

Nicolas Le Corre, DFO Science, Newfoundland and Labrador Region, presented an overview of the survey coverage, environmental and ecosystem conditions, and survey biomass indices that provided the basis for the March 2026 *P. borealis* stock update.

- The stock status for the NSAR and SSAR is only updated during full assessments; it is not possible to estimate stock status during interim-year updates.
- Fishable Biomass (FB) and Spawning Stock Biomass (SSB) survey indices, estimated using spatiotemporal models, are updated for use in the harvest decision rules that are being tested via Management Strategy Evaluation (MSE).
- Proportional breakdown of each assessment region's FB survey index into management areas is provided.
- The ocean climate in the NL Bioregion has shown decadal-scale cold and warm phases. The warm phase that started around 2020 continued in 2025.
- The biomass of key predatory fishes (Greenland Halibut, Atlantic Cod, and redfish) have increased in both assessment regions in the 2020s and remains high in 2025.
- Clearwater FNC requested the rationale for the warm water observed on the Labrador Shelf (3O), which is noteworthy because there are colder temperatures evident on the Eastern Scotian Shelf.
 - DFO Science suggested that it may be due to increased mixing of warm water from deeper off the ocean shelf.
- Ocean Choice International (OCI) indicated that warmer bottom ocean temperatures are occurring in other nearby areas (3N) and affecting other fisheries (i.e., yellowtail).
- Nunavut Fisheries Association (NFA) raised that comparing pre- (recent past) and post-collapse (current) biomass in the system is not a fair comparison; it is currently a shellfish dominant regime and it doesn't make sense to compare this to a groundfish dominated regime.
- Northern Coalition (NC) asked if the ecosystem is stabilizing at pre-collapse levels and if pre-collapse is referring to the early 1980s timeframe?
 - DFO Science indicated that pre-collapse refers to pre-1990s and there is uncertainty if the system will return to pre-collapse levels because of warming waters, etc.
- OCI noted that a more groundfish dominant ecosystem is returning, yet shrimp SSB and FB is increasing – what could be a rationale for this?
 - DFO Science indicated that it is difficult to decipher the effect of predation – there are multiple aspects at play.
 - Potential predator-prey index is reported and this doesn't mean that predators are present in the same location as the shrimp.

- There's an abundance of small redfish in the North and it is challenging to determine how much shrimp they are consuming.
 - Depends on fishing pressure.
- The Canadian Association of Prawn Producers (CAPP) noted that the biomass of shrimp in the deeper strata does not appear to be included in the ecosystem survey.
 - DFO Science responded that the survey covers 100m to 750m depth.

NSAR Indices and Trends

- The stock status was not updated in March 2026. The stock was estimated to be in the Healthy Zone when last fully assessed in March 2025.
- The SSB survey index in 2025 (150,000 t) increased from 2024 (142,900 t), and remains above the time-series average.
- The FB survey index in 2025 (231,000 t) increased from 2024 (186,300 t), but remains below the time-series average.
- In the context of the overall trajectory of the stock, these interannual changes in the indices are consistent with the stock biomass remaining near their respective time-series averages.

SSAR Indices and Trends

- The stock status was not updated in March 2026. The stock was estimated to be in the Healthy Zone when last fully assessed in March 2025.
- The SSB survey index in 2025 (73,400 t) increased from 2024 (55,500 t), but remains below the time-series average and is around the lowest level in the survey time series.
- The FB survey index in 2025 (114,500 t) increased from 2024 (90,900 t), but remains below the time-series average and is around the lowest level in the survey time series.
- In the context of the overall trajectory of the stock, these interannual changes in the indices are consistent with the stock biomass remaining near their respective time-series low levels.

FB Spatial Distribution

- The spatial distribution (proportion) of the FB survey index within each stock assessment region was provided to inform the relative distribution of the stock assessment region harvest level into the management areas (i.e., the SFAs).
- CAPP, NFA, and OCI requested clarification on the methodology used to calculate the FB proportions and for DFO to provide calculations (including amounts) of FB in each management area under the old methodology (OGMAP and STRAP) and the new methodology (spatiotemporal modeling) dating back to 2016.
 - DFO Science indicated that the entire survey timeseries data (1996-2025) was input into the spatio-temporal model to calculate the FB and proportions over the entire survey timeseries, but only the most recent years were shown. The FB proportions were requested by DFO RM.
 - DFO RM indicated that tables illustrating these calculations will be provided.

Striped shrimp (*P. montagui*)

Samantha Fulton, DFO Science, Arctic Region, presented and an overview of the survey coverage and survey biomass indices that provided the basis for the March 2026 *P. montagui* stock update.

SFA 4

- Stock status is in the Healthy Zone.
- SSB index increased by 20% (to 30,000 t) from 2024.
- FB index increased by 19% (to 33,900 t) from 2024.

EAZ

- Stock status is in the Critical Zone.
- SSB decreased by 77% (to 3,045 t) from 2024.
- FB decreased by 79% (to 3,298 t) from 2024.

WAZ

- Stock status is in the Healthy Zone.
- SSB decreased by 16% (to 55,465 t) from 2024.
- FB index increased by 14% (to 82,646 t) from 2024.

Discussions on TAC and Management Measures

- NC remarked that the increase in the WAZ biomass is orders of magnitude higher than the biomass in EAZ, and these stock areas are likely not truly discreet; we are likely observing the biomass distribution at the moment it is surveyed, and the combined stock status as a whole may be relatively unchanged.
 - Noted that the relative shifts in stock biomass pose a challenge to developing management measures for these management areas and there was interest expressed in previous years to examine the stock in more holistic way.
 - From a science perspective, how significant should the EAZ stock assessment findings be as we approach management of the resource?
 - DFO Science responded that this year's survey catches of striped shrimp near Resolution Island were much lower relative to adjacent areas. Survey maps show that a concentration of biomass has moved from the EAZ to just over the WAZ management line.
 - Further, the SSB in EAZ is a relatively smaller value, so drops in percentage appear much worse than they actually are in absolute terms (tonnage amounts).
 - A one-year biomass decrease in the EAZ may not be of high concern from a science perspective in context of increases in adjacent regions, but is something to keep an eye on.
- NFA noted that there are several decreases in biomass followed by increases evident in the EAZ time series.
- NRL raised that that the dividing line between EAZ and WAZ has been problematic for many years. The changes in stock status are largely driven by migrations in distribution between EAZ and WAZ which yield mathematical effects (artifacts) due to the dividing line.
 - Requested that a Working Group be struck to address this issue.

2026-27 Total Allowable Catches (TACs)

DFO RM presented TAC recommendation options for *P. borealis* and *P. montagui*.

Striped shrimp (*P. montagui*)

TAC recommendations for the Striped shrimp stocks followed application of the 2-step Harvest Decision Rule (HDR) accepted by NSAC in previous years. TAC discussions for the WAZ were reserved for the Indigenous meeting.

SFA 4

- Applying the 2-step = 5,828t (ER of 17.2%).
- Maintaining the 2025 = 4,033t (ER of 11.9%).
- CAPP supported maintaining the TAC at 4,033 t. No objections were raised.

EAZ

- A 10% exploitation rate (ER), as per following the HDRs, results in a TAC of 330t.

- NRL, NC, and CAPP noted that 330 t would pose challenges to the directed *P. borealis* stock in the EAZ and re-iterated their request for a Working Group to examine the EAZ-WAZ management area border.
 - There was general agreement among NSAC members that 330 t is not sufficient for cover *P. montagui* bycatch in the *P. borealis* fishery.
- CAPP proposed applying an adaptation of the 2-step function of the HDR, resulting in a TAC of 1,578t.
 - No objections by industry were raised. The Chair noted the preference for a variation in the application of the HDR for a TAC of 1,578t.
- DFO Science clarified that a 20% maximum ER would not be a major concern for them at this time, however, they could not support removals beyond this level.
 - The Precautionary Approach framework should be used in managing the stocks, and as such, registering the adjustments as an overallocation may be preferable in this regard (as opposed to the overallocation integrated within the TAC).
 -

Northern shrimp (*P. borealis*)

TAC recommendations for Northern shrimp were based on MSE-tested HDRs, applying a 4-year moving average of the FB spatial distribution, and a catch utilization adjustment.

NSAR Harvest Level

- Stock status was in the Healthy Zone when last fully assessed (March 2025).
- Harvest levels for variations of the shortlisted 2-Step HDRs with an ER of 20% and 17% were presented.
- NSAC members (NC, OCI, CAPP) supported retaining NSAC's previous recommendation (from January 20, 2026 meeting) for the HDR with a 20% ER, a maximum harvest level change of 25%, and a 4-year phase-in period (Max25_4-year_20%).
- Max25_4-year_20% results in a NSAR harvest level of 41,760 t.

SSAR Harvest Level

- Stock status was in the Healthy Zone when last fully assessed (March 2025).
- Harvest levels for variations of the shortlisted 2-Step HDRs with an ER of 10%, 12.5%, and 15% were presented.
- NSAC members (FFAW, CAPP) supported retaining NSAC's previous recommendation (from January 20, 2026 meeting) for the HDR with a 15% ER and a maximum harvest level change of 25% (Max25_15%).
- Max25_15% results in a SSAR harvest level of 15,780 t.

Management Area TACs

TACs were presented with the various shortlisted HDRs for the NSAR and SSAR. TACs with the NSAC-recommended HDR for the NSAR and SSAR noted above were as follows:

- WAZ: 4-year average of biomass (19.3%) of the NSAR harvest level = 8,060t.
- EAZ: 4-year average of biomass (23.1%) of the NSAR harvest level = 9,636t.
- SFA 4: 4-year average of biomass (35.3%) of the NSAR harvest level = 14,752t.
- SFA 5-North: 4-year average of biomass (22.3%) of the NSAR harvest level = 9,302t.
- SFA 5-South: 4-year average of biomass (7.2%) of the SSAR harvest level = 1,132t.
- SFA 5 (North and South combined): 10,434t
- SFA 6: 4-year average of biomass (82.3%) of the SSAR harvest level = 12,991t.
- 3L: 4-year average of biomass (10.4%) of the SSAR harvest level = 1,641t; Canadian domestic TAC for SFA 7 = 1,367t .

- 3NO: 4-year average of biomass (0.1%) of the SSAR harvest level = 16t.

Catch Utilization Adjustment

The industry proposal, tabled at the January 20, 2026 NSAC meeting, to add 5% of TAC to each management area in the NSAR was discussed.

- Since the January 20 meeting, views provided to the Department indicated limited benefits of the proposed 5% catch adjustment to Nunavut and Nunavik (NU and NK) entities. Land Claimants submitted a proposal for underutilized quota in the WAZ to benefit NU/NK entities in NU/NK-East and Davis Strait West (DSW), subject to co-management Board decisions.

Discussions on TAC and Management Measures

- NC asked why the new survey data was not integrated into the TAC_1 to TAC_5 projections? When will it be?
 - DFO Science responded that this data was not included in the MSE diagnostic performance statistics because the full MSE will not be run again until it is reviewed (i.e., 2028). However, the survey data was included in updating the biomass indices and determining the NSAR and SSAR harvest levels.
- OCI questioned why additional HDRs were tested after the past NSAC meeting, suggesting that it was not worth expending capital to add this calculation given that the improvements in LRP are minimal yet would have a significant impact on economics.
 - DFO RM responded that RM wanted to see the full profile of options for risk assessment purposes.
- CAPP indicated that the tests with the additional ERs have not changed their recommendation, noting that the 2025-26 ERI would be 17.8% if that TAC was fully caught, and that we're on track to be within the range for ER this year.
- FFAW re-iterated that their previous HDR recommendation with 15% ER still stands. The 0.2% difference in pLRP is an improvement, but has significant implications for inshore fleet amounting to ~\$3 million in reduced TAC.
 - Questioned if the HDR numbers for 12.5% ER will be included in the advice to the Minister as an option?
 - DFO Science responded that they recognize the socio-economics implications and that the choice is a management decision, but recommended exploring additional HDRs with lower ERs from a conservation perspective because those lower ERs would be more closely aligned with Umsy values; 15% ERI is almost 2x Umsy numbers. Further, the LRP is much lower than in the past, presenting increased uncertainty with how the stock would respond should it enter the Critical Zone.
- CAPP suggested that with an HDR selected, SFA-specific TAC recommendations are simply arithmetic. Indicated that they are comfortable with the TACs, though their support is conditional on having a method of catching the full harvest level.
 - NC and NFA supported this argument.
- Regarding the catch utilization adjustment, CAPP indicated that it should be included in the TAC (i.e., SFA harvest level + utilization adjustment), rather than an over-allocation which may raise concerns from an MSC perspective.
 - The catch utilization adjustment could be viewed as a way to help the actual removals be more akin to what the model assumes was removed.
 - NFA questioned if this approach would have any impacts to MSE or the model?
 - DFO Science noted that the MSE assumes that 100% of the HDR amount is removed.
- St. Anthony Basin Resources Inc. requested clarification on why the catch utilization adjustment is only for the NSAR and not the SSAR?

- DFO RM responded that greater utilization is realized in the SSAR, but views regarding a proposal for the SSAR are welcomed.
- Clearwater FNC noted that SSAR underutilization would likely occur in the future once SFA 7 is re-opened.
- DFO Science indicated concerns that the catch utilization adjustment could result in increased localized fishing pressure and that this adjustment should be recorded separately from the TAC for tracking purposes.
- CAPP re-iterated that the industry proposal continues to be that each SFA in the NSAR receives a 5% increase to the TAC from the MSE HDR output, and that every quota holder within each NSAR SFA receives a 5% increase, which should also apply to Davis Straight West.
 - NFA supported including the 5% adjustment in the TAC, but recognized the need to document how the resulting TACs were determined.
 - DFO RM suggested that TAC can be articulated as inclusive of the HDR output and catch utilization adjustment.

Other Updates

Electronic Video Monitoring (EVM) and Shore-based Reporting

DFO provided an update on the EVM and shore based reporting initiatives.

- EVM in the offshore fleet, which is voluntary, cannot be used while fishing inside the Nunavut and Nunavik Settlement Area waters. Using EVM would be subject to Board decisions to be used in the future.
- Similarly, EVM and the shore-based reporting do not apply for offloading in Greenland.
- The shore-based program will have mandatory and voluntary components:
 - Dockside carton counting (and weighing for industrial shrimp only) by independent service providers will be mandatory.
 - Package inspection to determine the “net frozen weight” of all product types will also be mandatory.
 - Further inspection to determine the net drained (or thawed) weight is optional.
- There will be a 1-year pilot phase for the shore-based program and the fleet will be given a 60-day notice prior to this program coming into effect.
- NRL supported that some aspects of the shore-based component are voluntary.
 - Clarified that industrial shrimp, which is a raw material sold as a raw material and at actual weight, wouldn't require sampling.
 - Noted that it is important that the requirement to provide a complete and accurate hail on a daily basis remains the licence conditions.
- NC expressed concern at the pace that the initiative is being implemented, given and outstanding questions and concerns.
 - Operational considerations as to how this is going to work and additional costs that may be incurred. Will there be incremental effort and time constraints?
 - Next steps are unclear – is further dialog with inspection companies planned?
 - Supports EVM, as long as there's no intent to make it mandatory.
 - Unclear when the specific implementation date will be. Does the term "pilot" extend to EVM? Requested that draft protocols and forms be distributed to NSAC so members can have opportunity to review.
- The Chair indicated that the pilot is for the shore based component, to indicate that there could be changes to the sampling requirements etc., and that “pilot” does not imply mandatory EVM in the future.
 - Further, the Chair committed to:
 - Focus on the implementation questions and ground truthing operational requirements with the service providers.

- Send protocol documents to NSAC members for their review, and outline next steps in terms of engagement with service providers. Provide 60 days notice to NSAC once operational elements are developed.

Licence Conditions

DFO provided an update on the key changes in the 2026 conditions of licence.

- Added a requirement for licence holders with access to multiple quota types in Davis Strait West to record the allocation type being fished in the Comments section of the logbook.
- Added a requirement to report catches in SFA 5 to SFA 5 North or SFA 5 South in the Comments section of the logbook.
- Added requirement to report tows in SFA 5 that cross the line between SFA 5 North and SFA 5 South in the Comments section of the logbook.
- Added a new Schedule which outlines technical specification and conditions about the functioning and operation of the EVM system, noting that more specific requirements would be in the EVM protocol, which is being finalized and would be distributed.
- Added a new Schedule requiring those using EVM to hail out.

SFA 7

DFO provided an update on the potential re-opening of SFA 7.

- Regarding the 9.4% allocation to Prince Edward Island Atlantic Shrimp Company (PEIASC), the Minister was considering the potential for using that allocation for Section 10 purposes, and had requested PEIASC to provide information with respect to that.
- PEIASC chose not to submit an application, nor provide additional information related to the projects which had been funded through their allocation over the years, which DFO had offered to share with the NSAC memberships.
- The Minister is further contemplating what she would like to do with their allocation.
- The TAC for SFA 7 will be established along with SFAs 4-6, informed by the MSE-tested HDR. However, any decision to re-open SFA 7, and associated TAC, will be announced together with allocation decisions.
- The PEIASC clarified the position of the PEIASC and PEI Government on this matter.
 - While their allocation supported science research, it was never tied to scientific research, there have been all sorts of other projects supported over the years.
 - The PEIASC could mount a credible proposal, but they do believe their access to Northern shrimp in SFA 7 should not be subject to NSAC members support. It should be guaranteed by the Government of Canada, as re-iterated by PEI Minister Bell and Minister Hudson, who personally met with Minister Thompson.
 - PEIASC's and PEI Government's position is that if there is an allocation in SFA 7, PEI should continue to receive their 9.4% allocation.
 - Indicated they would be happy to share the PEIASC letter with the committee.

Section 10 for NSRF in SFA 4

- The Minister decided to allocate 1,500t for 2026-27 from the SFA 4 TAC, and that, from now on, the 1,500t will be distributed proportionately to all allocation holders in SFA 4 according to the sharing key.

Conservation and Protection (C&P)

- C&P provided an update on enforcement activities over the past year.

Safety at Sea

- Transport Canada presented information pertaining to safety at sea.

Participants

Sherry Glynn – Fish Food Allied Workers Union (FFAW)
 Julian Ryan – 3K North, FFAW
 Catherine Boyd, Dany Jabbour, and Jim Gibbons – Clearwater Seafoods
 Bruce Chapman – Canadian Association of Prawn Producers
 Carey Bonnell – Ocean Choice International
 Michelle Moffat – MV Osprey
 Brian McNamara, Brent McNamara, and Mark Quinlan – Newfoundland Resources Ltd.
 Tony Wright – Makivvik Corporation
 Alastair O’Reilly – Northern Coalition
 Brynne Divine – Oceans North
 Patrick Martin and Jerry Ward – Qikiqtaaluk Corporation / Qikiqtaaluk Fisheries Corporation
 Derek Butler – Nunavut Fisheries Association
 Christopher Mitchelmore – St. Anthony Basin Resources Inc.
 Ron Johnson – Torngat Fish Producers Co-operative Society Ltd.
 Emma-Rose Murphy – Nunatsiavut Government
 Paul Loder and Peter Adams – Baffin Fisheries Cooperative
 Ann-Julie Cote – Ministère de l’Agriculture, des Pêcheries et le l’Alimentation du Québec
 Shawn Frank – Pikalujak Fisheries
 Dave MacEwan – Government of Prince Edward Island
 Lewis Creed – Prince Edward Island Atlantic Shrimp Company
 Cyril Boudreau – Government of Nova Scotia Department of Fisheries and Aquaculture
 Leigh Gustafson – Nunavut Wildlife Management Board (NWMB)
 Keith Coady – Arctic Fishery Alliance
 Ben Davis – Torngat Wildlife Plants and Fisheries Secretariat

Todd Williams – DFO Resource Management (RM) National Capital Region (NCR), Chair
 Leigh Edgar – DFO RM NCR
 Liliya Baranova – DFO RM NCR
 Dirk Algera – DFO RM NCR
 Brian Lester – DFO RM NCR
 Nicholas Duprey – DFO Science NCR
 Nicolas Rolland – DFO Science NCR
 Nicolas Le Corre – DFO Science NL Region
 Krista Baker – DFO Science NL Region
 William Coffey – DFO Science NL Region
 Martin Henri – DFO RM NL Region
 Wojciech Walkusz – DFO Science Arctic Region
 Samantha Fulton – DFO Science Arctic Region
 Matt Martens – DFO FM Arctic Region
 Sandra Moore – DFO FM Arctic Region
 Danielle Roy – DFO RM Gulf Region
 Andrew Humber – DFO Conservation and Protection NL Region
 Paul Glavine – Transport Canada

Northern Shrimp Advisory Committee - Indigenous Meeting – March 26, 2026

A virtual meeting of the Northern Shrimp Advisory Committee (NSAC) took place on March 25, 2026. The Department held a virtual post-meeting with Indigenous participants on March 26, 2026, which included representatives from:

- Nunavut Fisheries Association (NFA)
- Torngat Fish Producers Co-Op
- Qikiqtaaluk Corporation (QC) / Qikiqtaaluk Fisheries Corporation (QFC)
- Northern Coalition (NC)
- Canadian Association of Prawn Producers (CAPP)
- NunatuKavut Community Council (NCC)
- Ueushuk Fisheries
- Torngat Joint Fisheries Board
- Nunatsiavut Government (NG)
- Baffin Fisheries Coalition (BFC)
- Makivik Corporation
- Newfoundland Resources Ltd (NRL)

The perspectives on science and management of *P. borealis* and *P. montagui* in the EAZ and WAZ in this document encompass views expressed at the Indigenous meeting; views at the broader NSAC meeting on March 25, 2026 are provided in a separate document.

Science – Stock Updates

DFO Science recapped the *P. borealis* and *P. montagui* stock updates presented at the NSAC main table.

- NFA asked if biomass trends for *P. montagui* in WAZ and EAZ could be assessed and reported similarly to SFA 4 *P. montagui* (*i.e.*, a model-based assessment method)?
- DFO Science indicated that it is not possible to parse out the trends for *P. montagui* in WAZ and EAZ because they are encompassed within SFA 4, which uses the entire region to determine the spawning stock biomass trends.
 - The most effective way to address this would be to emulate what has been done for Northern shrimp – treat it as one biological stock.

2026-27 Total Allowable Catches (TACs)

DFO RM presented TAC recommendation options for *P. borealis* in the EAZ and WAZ, and for *P. montagui* in SFA 4, EAZ, and WAZ.

Striped shrimp (*P. montagui*)

TAC recommendations for the Striped shrimp stocks followed application of the 2-step Harvest Decision Rule (HDR) accepted by NSAC.

EAZ

- Stock status is in the Critical Zone.
- A 10% exploitation rate (ER), as per following the HDRs, results in a TAC of 330t.
- There was recognition of the movement of the stock across the EAZ and WAZ dividing line, which creates uncertainty and potential for fluctuations in the stock dynamics.
- NSAC recommended applying a modified 2-step HDR = 1,578t (ER of 47.8%) instead.
- Indigenous meeting participants supported the NSAC recommendation to apply the modified 2-step HDR, resulting in a TAC of 1,578t.

SFA 4

- Stock status is in the Healthy Zone.

- Applying the 2-step HDR = 5,828t (ER of 17.2%).
- Maintaining the 2025 TAC = 4,033t (ER of 11.9%) (recommended at NSAC).
- No objections were raised against the NSAC recommendation.

WAZ

- Stock status is in the Healthy Zone.
- Applying the 2-step HDR = 15,743t (ER of 19.0%)
- QC/QFC, Makivvik, NFA, BFC, and NC indicated their support for an ER of 20% or higher given the current Healthy status and the stock's past biomass trends that illustrate the stock is able to easily tolerate a 20%+ ER with no conservation risks.
 - Should take advantage of the stock being in the Healthy Zone while the opportunity exists.
- NRL raised that larger, older shrimp are increasingly accounting for more of the catches, which is very desirable from a marketing perspective.
 - It is possible that by setting conservative TACs, we're seeing the sizes of shrimp increase because they are surviving longer.
 - To maximize sustaining catching older, larger shrimp, it would be advantageous to know what the mortality-at-age rates are.
 - NC noted that the science update supports NRL's conclusions: fishable biomass has increased while spawning stock biomass has decreased, suggesting that there's more in the fishable biomass reaching the end of the life cycle.

Northern shrimp (*P. borealis*)

TAC recommendations for Northern shrimp in the EAZ and WAZ were consistent with the approach presented at NSAC.

EAZ

- Stock status was in the Healthy Zone when last fully assessed (March 2025).
- NSAC recommended applying the MSE-tested HDR selected for the NSAR and the 4-year average of biomass in EAZ = 9,636t .
- No objections were raised against the NSAC recommendation.

WAZ

- Stock status was in the Healthy Zone when last fully assessed (March 2025).
- NSAC recommended applying the MSE-tested HDR for the NSAR and the 4-year average of biomass in WAZ = 8,060t.
- No objections were raised against the NSAC recommendation.

Management Measures

Catch Utilization Adjustment Proposals

- In response to the catch utilization adjustment proposed by CAPP at NSAC on January 20, Nunavut (NU) and Nunavik (NK) entities (Makivvik/NRL and NFA) requested an alternative catch utilization proposal for NU/NK to allow an additional 800t to be fished in EAZ (NU/NK E and DSW). This alternative proposal from NU/NK was discussed.
 - Department suggested that this 800t could be split by adding 200t to NU/NK-E and 600t to NU/NK-DSW, to be shared 50/50 between NU and NK.
- DFO Science requested clarification on when in the season the adjustment would be applied and whether the amount of removals already registered would be considered before the adjustment is applied.
 - DFO RM indicated that the proposed adjustments would be considered as part of the TAC for each management area, applied at the beginning of the season.
 - NFA raised that the NU/NK proposal would be a one-year trial, with potential adjustments made the following year.
- CAPP expressed support for the flexibilities and the NU/NK proposal in principle, but concern with allowing additional quota to be fished in EAZ without any transfer of the quota out of the WAZ,

- essentially resulting in overallocation in the EAZ.
- DFO Science asked whether the increased QC/QFC fishing capacity would mean that the TACs in WAZ and EAZ will become more fully utilized, and what that may mean regarding these catch utilization proposals.
 - NRL noted that even with the increased fishing capacity, the risk of fully utilizing the catch in these areas is very low.
 - CAPP raised that the *P. borealis* and *P. montagui* biomass distributions may be shifting between EAZ and WAZ such that the decrease/increase in biomass in one area could be resulting in a corresponding decrease/increase in the other, highlighting the importance of accounting for adjustments between the two areas.
 - DFO RM noted for awareness that applying the increases equally within the settlement areas would change the traditionally held 80:20 NU-NK sharing arrangement to 73:27.
 - NRL acknowledged that the minor change to 73:27 sharing was known among NU and NK interests when developing their catch utilization proposal.
 - NFA raised that the NU/NK proposal is conceptually similar to the 5% proposal discussed at the NSAC table. The key difference is the amount of quota made available and potentially caught in the EAZ and WAZ.
 - CAPP highlighted that allowing quota from one management area to be fished in another (i.e., WAZ quota fished in EAZ) conceptually departs from the 5% proposal and how the management of the fishery has operated to date, and could be considered precedential. Would others be allowed the flexibility to fish quota from one area in another area? Is the NU/NK proposal to be treated as an exception (i.e., one-off)?
 - DFO RM indicated the NU/NK proposal is similar in objective to the CAPP proposal.
 - Striving to provide flexibility without changing allocation keys, sharing arrangements, or opening up new access for entities that didn't have access previously.
 - CAPP expressed that ad hoc operationalization and precedent-setting potential of the NU/NK proposal should be avoided. Further, a rationale for the amount in the NU/NK should be developed, so it is not arbitrarily selected. A unifying proposal that meets the flexibility objectives and melds consistency in the 5% and NU/NK proposals regarding rationale and approach should be developed.
 - NFA noted that the 5% proposal is also based on allowing uncaught quota in one area to be fished in another (i.e., Davis Strait East quota to be caught in SFA 4 and SFA 5).
 - NRL noted that the two proposals are the same in concept and complementary in terms of amounts. However, there needs to be consideration regarding the source of the underutilization and adjustments should equally benefit those entities from where it is occurring. To the extent it is sourced from land claims areas, land claimants should benefit accordingly.
 - BFC indicated that land claim agreements are a critical component towards evaluating the catch adjustment proposals, and supported NRL's position regarding land claims beneficiaries.
 - The desire for flexibility stems from minimizing environmental (sea ice affecting northern companies to a greater extent) and operational (fleet availability) constraints.
 - Seeking flexibility not to be able to catch more quota necessarily, rather to be able to catch quota in more appropriate areas depending upon the time of year.
 - CAPP noted that the 800t adjustment amounts to ~10% of the potential WAZ TAC, which is twice the percentage increase of the 5% proposal, and raises potential equitability and conservation concerns. Further, the EAZ contains commercial and land claims areas, so adjustment decisions in this area affects all harvesters.
 - Reiterated that limits should be set on adjustment amounts for the NU/NK proposal.
 - BFC indicated that the 5% proposal results in similar tonnage amounts being allocated to industry stakeholders in SFA 4 and 5-North relative to the NU/NK proposal.
 - NC raised that the stocks are not biologically divided, this is only for management purposes to retain the existing allocation structures. In situations where there is no risk to the resource, maximum flexibility should be implemented to improve operational efficiencies without prejudice to the risk to people's respective shares.
 - DFO Science noted concerns with both the 5% proposal and NU/NK proposal regarding uncertainty with resultant concentration of effort and increased fishing pressure in the NSAR management areas, especially in light of the other proposed flexibilities (e.g. carry forward) that may be operationalized,

which will also result in increased pressure.

- The Chair noted the the committee's agreement on the desire to have a catch utilization adjustment included in the TAC. The Department will follow up in the coming days with further information and invite participants to submit views and potential alternative proposals that reconcile the two existing proposals.

Other Updates

Nunavut Fisheries Regulations (NFRs)

DFO provided an update on the NFRs, which are being co-developed with Indigenous partners.

- The Atlantic Fishery Regulations will no longer apply within the Nunavut Settlement Area and Nunavik Marine Region; key provisions will be “ported over” to avoid disruption. No anticipated changes to commercial shrimp fishing or licensing; existing licenses will continue to be valid.
- QC/QCF sought confirmation that NFRS would not affect existing commercial operations outside Nunavut (e.g., Ungava Bay) and whether communal fish plans could be used outside settlement areas.
- DFO clarified that communal plans apply only within settlement areas and that commercial fishing outside of settlement areas remains unchanged.

Electronic Video Monitoring (EVM) and Shore-based Reporting

DFO provided an update on the EVM and shore based reporting initiatives.

- EVM in the offshore fleet, which is voluntary, cannot be used while fishing inside the Nunavut and Nunavik Settlement Area waters. Using EVM would be subject to Board decisions to be used in the future.
- Similarly, EVM and the shore-based reporting do not apply for offloading in Greenland.
- The shore-based program will have mandatory and voluntary components:
 - Dockside carton counting (and weighing for industrial shrimp only) by independent service providers will be mandatory.
 - Package inspection to determine the “net frozen weight” of all product types will also be mandatory.
 - Further inspection to determine the net drained (or thawed) weight is optional.
- There will be a 1-year pilot phase for the shore-based program and the fleet will be given a 60-day notice prior to this program coming into effect.
- NRL noted that the term service providers need to be expanded beyond what been used in recent years to include offloading companies, independent contractors.

Licence Conditions

DFO provided an update on the key changes in the 2026 conditions of licence.

- Added a requirement for licence holders with access to multiple quota types in Davis Straight West to record the allocation type being fished in the Comments section of the logbook.
- Added a requirement to report catches in SFA 5 to SFA 5 North or SFA 5 South in the Comments section of the logbook.
- Added requirement to report tows in SFA 5 that cross the line between SFA 5 North and SFA 5 South in the Comments section of the logbook.
- Added a new Schedule which outlines technical specification and conditions about the functioning and operation of the EVM system, noting that more specific requirements would be in the EVM protocol, which is being finalized and would be distributed.
- Added a new Schedule requiring those using EVM to hail out.

SFA 7

DFO provided an update on the potential re-opening of SFA 7.

- Regarding the 9.4% allocation to Prince Edward Island Atlantic Shrimp Company (PEIASC), the Minister was considering the potential for using that allocation for Section 10 purposes, and had requested PEIASC to provide information with respect to that.
- PEIASC chose not to submit an application, nor provide additional information related to the projects which had been funded through their allocation over the years, which DFO had offered to share with the NSAC memberships.
- The Minister is further contemplating what she would like to do with their allocation.
- The TAC decision for SFA 7 will align with SFAs 4-6, however, the decision to re-open SFA 7 will align with allocation decisions.

Section 10 for NSRF in SFA 4

- The Minister decided to allocate 1,500t for 2026-27 from the SFA 4 TAC, and that, from now on, the 1,500t will be distributed proportionately to all allocation holders in SFA 4 according to the sharing key.

APPENDIX 3**Table 1.** Total allowable catch (TAC), exploitation rate, and stock status indicators (fishable biomass (FB), spawning stock biomass (SSB)) for *P. montagui* in the Western Assessment Zone (2022-23 to 2026-27).

<i>P. montagui</i>	2022-23	2023-24	2024-25	2025-26	2026-27
TAC (t)	12,096	17,282	15,384	14,956	TBD
% Change TAC	27.7	42.9	-11.0	-2.8%	TBD
FB* (t)	65,026	104,737	67,425	72,644	82,646
SSB* (t)	37,398	61,058	39,745	65,704	55,465
Potential Exploitation Rate (%)	18.6	16.5	22.8	20.6%	TBD
% Change FB*	27.7	61.1	-35.6	7.7	13.77
% Change SSB*	39.5	63.3	-34.9	65.3	-15.58

*Biomass values reflect the prior year's survey (e.g. 2024-25 FB/SSB values are reflective of the 2023 survey).

Table 2. Total allowable catch (TAC), exploitation rate, and stock status indicators (fishable biomass (FB), spawning stock biomass (SSB)) for *P. montagui* in the Eastern Assessment Zone (2022-23 to 2026-27).

<i>P. montagui</i>	2022-23	2023-24	2024-25	2025-26	2026-27
TAC (t)	1,400	2,100	2,216	2,469	TBC
% Change TAC	45.1	50.0	5.5	11.4	TBC
FB* (t)	15,225	14,325	14,137	15,724	3,298
SSB* (t)	11,200	10,428	6,829	13,488	3,045
Potential Exploitation Rate (%)	9.2	14.7	15.7	15.7	TBC
% Change FB*	-19.0	-5.9	-1.3	11.2	-79.0%
% Change SSB*	-22.4	-6.9	-34.5	97.5	-77.4%

*Biomass values reflect the prior year's survey (e.g. 2024-25 FB/SSB values are reflective of the 2023 survey).

APPENDIX 4

Table 3. Striped shrimp (*P. montagui*) quota distribution according to management unit or fleet/interest in the Eastern and Western Assessment Zones (EAZ and WAZ) over the past 5 years.

Management Area	Management unit Fleet/Interest	2020/21 Quota (t)	2021/22 Quota (t)	2022/23 Quota (t)	2023/24 Quota (t)	2024/25 Quota (t)
EAZ	NU-E_Nunavut	301	346	574	820	907
	NK-E_Nunavik	129	148	252	360	389
	DS E/W Offshore (bycatch)	410	471.5	574	920	920
	TOTAL	840	965.5	1,400	2,100	2,216
WAZ	NU-W_Nunavut	5,988	4,735	6,048	8,641	7,692
	NK-W_Nunavik	5,988	4,735	6,048	8,641	7,692
	TOTAL	11,975	9,470	12,096	17,282	15,384

APPENDIX 5

Table 4. The application of the 2-Step Harvest Decision Rule (HDR), including the spawning stock biomass (SSB), fishable biomass (FB), total allowable catches (TACs), and exploitation rate (ER), for Striped shrimp (*P. montagui*) in the Eastern and Western Assessment Zones (EAZ and WAZ). Yellow highlighted values indicate the TAC recommendation following the HDR.

EAZ <i>P. montagui</i>											
Year	SSB (t)	FB (t)	Initial target ER (based on Zone) Healthy: 20%	Initial target TAC (t)	Previous Year TAC from HDR (t)	Difference (previous TAC to Initial target TAC) (t)	50% of the Change in TAC (t)	Calculated or “re-start” TAC (t)	“Finish” TAC (t)	Potential ER	Does this exceed Max 1.5 Target ER? (Y/N)
2024	6,829	14,137	20%	2,827	2,100	727	364	2,464	n/a	17.4%	No
2025	13,488	15,724	20%	3,145	2,464	929	464	2,804	2,827	18.0%	No

WAZ <i>P. montagui</i>											
Year	SSB (t)	FB (t)	Initial target ER (based on Zone) Healthy: 20%	Initial target TAC (t)	Previous Year TAC from HDR (t)	Difference (previous TAC to Initial target TAC) (t)	50% of the Change in TAC (t)	Calculated or “re-start” TAC (t)	“Finish” TAC (t)	Potential ER	Does this exceed Max 1.5 Target ER? (Y/N)
2024	39,745	67,425	20%	13,485	17,282	-3,797	-1,899	15,384	n/a	22.8%	No
2025	65,704	72,644	20%	14,529	15,384	-855	-428	14,956	13,485	20.6%	No