

**SUBMISSION TO THE  
NUNAVUT WILDLIFE MANAGEMENT BOARD  
AND NUNAVIK MARINE REGION WILDLIFE BOARD**

**FOR**

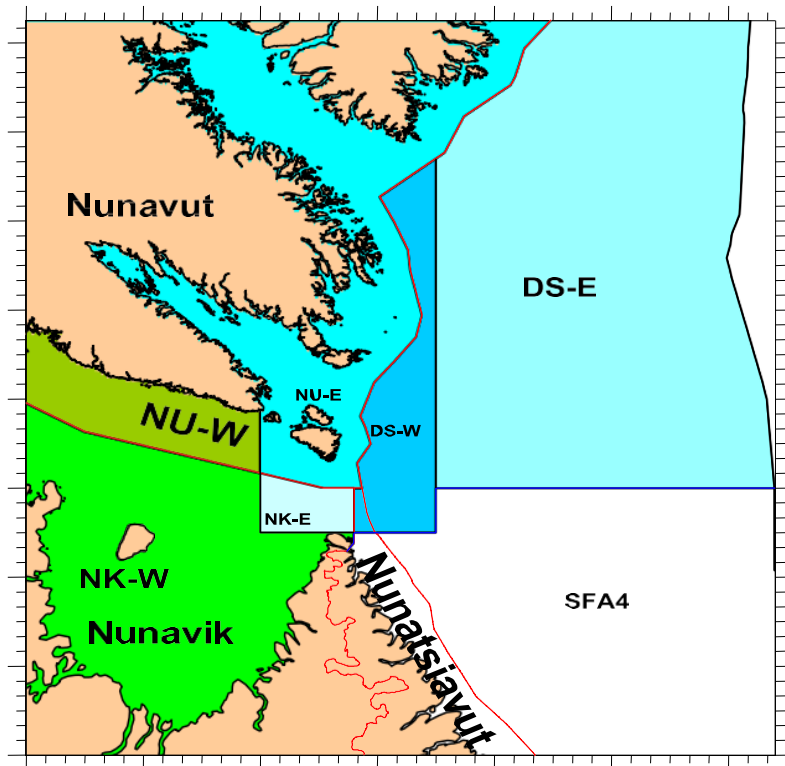
**Information:**

**Decision: X**

**Recommendation: X**

**Issue: Total Allowable Catch levels for Striped Shrimp (*Pandalus montagui*) for the 2026-27 fishing season in the Western and Eastern Assessment Zones, and Interim Allocations**

**Map:** Blue – Eastern Assessment Zone; Green – Western Assessment Zone



*Striped shrimp (Pandalus montagui)*

## **Background**

This briefing note presents the Nunavut Wildlife Management Board (NWMB), and the Nunavut Marine Region Wildlife Board (NMRWB), *i.e.*, the Boards, with the information necessary to provide decisions and recommendations to the Minister of Fisheries and Oceans Canada (DFO) for 2026-27 Striped Shrimp fisheries in the Western Assessment Zone (WAZ) and the Eastern Assessment Zone (EAZ). Science results from the 2025 DFO-Northern Shrimp Research Foundation and DFO multi-species surveys are now available, with science advice from the Canadian Science Advisory Secretariat (CSAS) peer review process for Striped Shrimp (*P. montagui*), provided at Appendix 1.

A meeting of the Northern Shrimp Advisory Committee (NSAC), followed by an Indigenous meeting occurred March 25-26, 2026. A summary of these meetings is provided at Appendix 2.

This briefing note presents the status of Striped Shrimp (*P. montagui*) stocks in the context of the Precautionary Approach (PA) framework and applies the Harvest Decision Rules (HDRs), supported by the Boards in 2024-25, for calculating TAC options.

## **WESTERN ASSESMENT ZONE (WAZ)**

### **Fishery Profile**

The fishery for *P. montagui* in the WAZ operates April 1 – March 31. Harvesting activity commences as early as May or June, subject to ice conditions.

The WAZ is divided into two management units, Nunavut West (NU-W) and Nunavik West (NK-W) (see map). These management units are located entirely within the Nunavut Settlement Area (NSA) and Nunavut Marine Region (NMR), respectively. The NWMB and NMRWB make decisions on management measures within their respective settlement areas and may make recommendations for adjacent management units.

*P. montagui* allocations in the NU-W management unit have been allocated to Nunavut fishing interests. Similarly, allocations in the NK-W management unit have been allocated to Nunavik fishing interests. Although no formal sharing arrangement exists, harvest level decisions in NU-W and NK-W have historically resulted in equal distribution of the overall TAC for each stock. A standing joint decision made by the NWMB and NMRWB on July 13, 2022, supports harvesting of these species in either management unit, regardless of settlement area boundaries.

A historical quota profile for the WAZ is provided at Appendix 4.

**Science Advice**

A summary of the CSAS peer review process to assess the status of the stocks that occurred in February 2026 is at Appendix 1. Stock status indicators for *P. montagui* in the WAZ for the past four years (2021/22-2024/25) are at Appendix 3.

The indices for *P. montagui* stocks have shown signs of high volatility, with no clear indication of mechanisms driving year-to-year fluctuations.

For *P. montagui*, eleven years of data are now available in the time series for the WAZ (2014-2024). The 2024 survey indicates the FB in the WAZ increased 7.7 % from the 2023 survey. The SSB in the WAZ increased 65.3 % from 2023 to 2024. Both of these indices are above their respective long-term means [*FB* 72,644 t; *SSB* 65,704 t].

**2026-27 Management Considerations**

*P. montagui* in the WAZ is estimated to be in the Healthy Zone of the PA Framework, above the USR with a greater than 99.9% probability and with biomass indicators above long-term means.

The 2025-26 TAC for *P. montagui* in the WAZ was 14,956 tonnes (t), which represents an exploitation rate (ER) of 18.1% if fully taken. Following application of the 2-Step HDR, the “re- start” option would be selected for 2026-27, yielding a TAC of 15,743 t (an increase of 5.3% from 2025-26), with a potential ER of 19.0 % (see calculation at Appendix 5). As of April 21, 2026 69% of the 2025-26 TAC had been harvested.

At the Northern Shrimp Advisory Committee Indigenous post-meeting on March 26, stakeholders advocated for a higher TAC than the HDR recommends, with an ER of up to 23%, given that the stock is in a healthy state and increasing, and favourable market conditions. Scenarios are illustrated below, for consideration.

Scenario	TAC (t)	ER (%)	% change in TAC from previous year
2-Step HDR ( <i>recommended</i> )	15,743	19.0	+ 5.3
23% ER	19,009	23.0	+27.1

**Recommendation:** It is recommended that the Boards apply the 2-Step HDR to set the overall TAC (combined for NU-W and NK-W) for *P. montagui* at 15,743 t.

**Summary of Request****Western Assessment Zone:**

1. Decisions on harvest levels for *P. montagui* in the NU-W (within the NSA) and NK-W (within the NMR) management units, respectively.
2. Recommendations on the overall TAC for *P. montagui* in the WAZ.

*Summary of requested decisions and recommendations, WAZ.*

<b>Area (Management Unit)</b>	<b><i>P. montagui</i></b>
<b>NSA (NU-W)</b>	Harvest level decision NWMB ( <i>Recommendation NMRWB</i> )
<b>NMR (NK-W)</b>	Harvest level decision NMRWB ( <i>Recommendation NWMB</i> )
<b><i>TOTAL (WAZ)</i></b>	<i>TAC recommendation</i> ( <i>combined total of decisions</i> ) <i>NWMB and NMRWB</i>

## **EASTERN ASSESMENT ZONE (EAZ)**

### **Fishery Profile**

The fishery for *P. montagui* in the EAZ operates April 1 – March 31. Harvesting activity commences as early as May or June, subject to ice conditions.

The EAZ is divided into four management units: Nunavut East (NU-E), Nunavik East (NK-E), and the offshore Davis Strait West (DS-W) and Davis Strait East (DS-E) areas (see map). These management units are located partially within and adjacent to the NSA and NMR. The NWMB and NMRWB make decisions on management measures within their respective settlement areas and may make recommendations for the adjacent Davis Strait management units. *P. montagui* is a directed species in NU/NK-E and is a bycatch species in the Davis Strait Northern Shrimp (*P. borealis*) directed fishery.

*P. montagui* allocations in the NU-E management unit have been allocated to Nunavut fishing interests. Similarly, allocations in the NK-E management unit have been allocated to Nunavik fishing interests. Although no formal sharing arrangement exists, DFO observes a long-standing distribution of allocations between NU-E and NK-E management units at approximately 70:30 per cent for *P. montagui*. A standing joint decision made by the NWMB and NMRWB on July 13, 2022, supports harvesting of these species in either management unit, regardless of settlement area boundaries.

There are no pre-existing arrangements for the distribution of quota between management units in the EAZ. However, allocation of quotas between the settlement areas (NU/NK-E) and the offshore Davis Strait areas must distribute fishing effort throughout the Zone and avoid concentrated effort in a single productive area (e.g., Resolution Island).

A historical quota profile for the EAZ is provided at Appendix 4.

### **Science Advice**

A summary of the CSAS peer review process to assess the status of the stocks that occurred in March 2025 is at Appendix 1. Stock status indicators for *P. montagui* in the EAZ for the past four years (2021/22-2024/25) are at Appendix 3.

The indices for *P. montagui* stocks have shown signs of high volatility, with no clear indication of mechanisms driving year-to-year fluctuations.

For *P. montagui*, sixteen years of data are now available in the time series for the EAZ (2009-2024). The 2024 survey indicates the FB in the EAZ increased 11.2 % from the 2023 survey. The SSB in the EAZ increased 97.5% from 2023 to 2024. Both of these indices are above their respective long-term means [*FB 15,724 t*; *SSB 13,488 t*].

### **2024-25 Management Considerations**

In 2025, the *P. montagui* stock in the EAZ was estimated to be in the Critical Zone of the PA Framework, below the limit reference point (LRP) with a 59 % probability. *P. montagui* has previously exhibited stock movement across the EAZ/WAZ boundary, which may be responsible for the decrease observed in 2025, and could be a short-term trend.

The 2025-26 TAC for *P. montagui* in the EAZ was 2,469 t, of which 338 t were caught (14%), of which 119 t was bycatch by the offshore fleet. The Boards and the Minister decided to deviate from using the 2-Step HDR in establishing the 2025-26 TAC. A rollover of the current TAC in 2026-27 would result in a potential ER of 74.9%. Given that the stock is estimated to be in the Critical Zone, the HDR would be applied without the second step, yielding a TAC of 330 t with a potential ER of 10.0 %. Given uncertainty in stock status potentially due to short-term stock movement, industry recommended applying the 2-step HDR to set the TAC at 1,578t, which represents a potential ER of 47.8% (see calculation at Appendix 5). Scenarios are illustrated below, for consideration.

<b>Scenario</b>	<b>TAC (t)</b>	<b>ER (%)</b>	<b>% change in TAC from previous year</b>
Rollover 2025-26 TAC	2,469	74.9	0
HDR	330	10.0	-86.6
2-step HDR ( <i>recommended</i> )	1,578	47.8	-36.1

For the Boards' consideration: At previous NSAC meetings, in discussing TACs and quotas for *P. montagui* in the EAZ, the offshore fleet noted that in Davis Strait (where they hold a bycatch designation for *P. montagui*) they require access to 920 t in order to be able to prosecute their *P. borealis* allocations.

**Recommendation:** It is recommended that the Boards apply the 2-Step HDR to set the overall TAC (combined for Davis Strait East/West, NU-E and NK-E) for *P. montagui* at 1,578t.

### **Summary of Request**

#### **Eastern Assessment Zone:**

1. Decisions on harvest levels for *P. montagui* in the NU-E (within the NSA) and NK-E (within the NMR) management units, respectively.
2. Recommendations on the overall TAC for *P. montagui* in the EAZ.

*Summary of requested decisions and recommendations, EAZ.*

<b>Area (Management Unit)</b>	<b><i>P. montagui</i></b>
<b>NSA (NU-E)</b>	Harvest level decision NWMB ( <i>Recommendation NMRWB</i> )
<b>NMR (NK-E)</b>	Harvest level decision NMRWB ( <i>Recommendation NWMB</i> )
<b>DS-E</b>	TAC recommendation NWMB & NMRWB
<b>DS-W</b>	
<b>TOTAL (EAZ)</b>	<i>TAC Recommendation NWMB &amp; NMRWB</i>

**Interim Allocations**

At the NSAC Indigenous meeting in March 2025, Northern Coalition, Nunavut Fisheries Association, Newfoundland Resources Ltd., Qikiqtaaluk Corporation, Makivvik Corporation, and Baffin Fisheries Coalition requested that the maximum allowable interim quota that could be released from Nunavut and Nunavik allocations in both the WAZ and EAZ be increased from 50 %, as per previous Boards' decisions and recommendations, and the Minister's decision in 2019, to 75 % moving forward.

Given that the Nunavut and Nunavik *P. montagui* allocations occur within the Nunavut Settlement Area and Nunavik Marine Region, in alignment with NU and NK industry requests, DFO is seeking decisions and recommendations, as appropriate, from the Boards to establish the maximum allowable interims to be released at 75 % of the previous year's quota (up from the previously approved level of 50 %).

Importantly, given that fishing in the NU and NK management units could begin as early as May, the Department requests that decisions and recommendations on interim quotas be taken separately from TAC decisions and recommendations and communicated to the Department at the earliest convenience.

**Prepared by:** Dirk Algera, Fisheries Resource Management, Fisheries and Oceans Canada

**Date:** May 6, 2025

**APPENDIX 3****Table 1.** Total allowable catch (TAC), exploitation rate, and stock status indicators (fishable biomass (FB), spawning stock biomass (SSB)) for *P. montagui* in the Western Assessment Zone (2022-23 to 2026-27).

<i>P. montagui</i>	<b>2022-23</b>	<b>2023-24</b>	<b>2024-25</b>	<b>2025-26</b>	<b>2026-27</b>
<b>TAC (t)</b>	12,096	17,282	15,384	14,956	TBD
<b>% Change TAC</b>	27.7	42.9	-11.0	-2.8%	TBD
<b>FB* (t)</b>	65,026	104,737	67,425	72,644	82,646
<b>SSB* (t)</b>	37,398	61,058	39,745	65,704	55,465
<b>Potential Exploitation Rate (%)</b>	18.6	16.5	22.8	20.6%	TBD
<b>% Change FB*</b>	27.7	61.1	-35.6	7.7	13.77
<b>% Change SSB*</b>	39.5	63.3	-34.9	65.3	-15.58

\*Biomass values reflect the prior year's survey (e.g. 2024-25 FB/SSB values are reflective of the 2023 survey).

**Table 2.** Total allowable catch (TAC), exploitation rate, and stock status indicators (fishable biomass (FB), spawning stock biomass (SSB)) for *P. montagui* in the Eastern Assessment Zone (2022-23 to 2026-27).

<i>P. montagui</i>	<b>2022-23</b>	<b>2023-24</b>	<b>2024-25</b>	<b>2025-26</b>	<b>2026-27</b>
<b>TAC (t)</b>	1,400	2,100	2,216	2,469	TBC
<b>% Change TAC</b>	45.1	50.0	5.5	11.4	TBC
<b>FB* (t)</b>	15,225	14,325	14,137	15,724	3,298
<b>SSB* (t)</b>	11,200	10,428	6,829	13,488	3,045
<b>Potential Exploitation Rate (%)</b>	9.2	14.7	15.7	15.7	TBC
<b>% Change FB*</b>	-19.0	-5.9	-1.3	11.2	-79.0%
<b>% Change SSB*</b>	-22.4	-6.9	-34.5	97.5	-77.4%

\*Biomass values reflect the prior year's survey (e.g. 2024-25 FB/SSB values are reflective of the 2023 survey).

**APPENDIX 4**

**Table 3.** Striped shrimp (*P. montagui*) quota distribution according to management unit or fleet/interest in the Eastern and Western Assessment Zones (EAZ and WAZ) over the past 5 years.

<b>Management Area</b>	<b>Management unit_Fleet/Interest</b>	<b>2020/21 Quota (t)</b>	<b>2021/22 Quota (t)</b>	<b>2022/23 Quota (t)</b>	<b>2023/24 Quota (t)</b>	<b>2024/25 Quota (t)</b>
<b>EAZ</b>	NU-E_Nunavut	301	346	574	820	907
	NK-E_Nunavik	129	148	252	360	389
	DS E/W_Offshore (bycatch)	410	471.5	574	920	920
	<b>TOTAL</b>	<b>840</b>	<b>965.5</b>	<b>1,400</b>	<b>2,100</b>	<b>2,216</b>
<b>WAZ</b>	NU-W_Nunavut	5,988	4,735	6,048	8,641	7,692
	NK-W_Nunavik	5,988	4,735	6,048	8,641	7,692
	<b>TOTAL</b>	<b>11,975</b>	<b>9,470</b>	<b>12,096</b>	<b>17,282</b>	<b>15,384</b>

**APPENDIX 5**

**Table 4.** The application of the 2-Step Harvest Decision Rule (HDR), including the spawning stock biomass (SSB), fishable biomass (FB), total allowable catches (TACs), and exploitation rate (ER), for Striped shrimp (*P. montagui*) in the Eastern and Western Assessment Zones (EAZ and WAZ). Yellow highlighted values indicate the TAC recommendation following the HDR.

<b>EAZ <i>P. montagui</i></b>											
Year	SSB (t)	FB (t)	Initial target ER (based on Zone) Healthy: 20%	Initial target TAC (t)	Previous Year TAC from HDR (t)	Difference (previous TAC to Initial target TAC) (t)	50% of the Change in TAC (t)	Calculated or “re-start” TAC (t)	“Finish” TAC (t)	Potential ER	Does this exceed Max 1.5 Target ER? (Y/N)
2024	6,829	14,137	20%	2,827	2,100	727	364	2,464	n/a	17.4%	No
2025	13,488	15,724	20%	3,145	2,464	929	464	2,804	2,827	18.0%	No

<b>WAZ <i>P. montagui</i></b>											
Year	SSB (t)	FB (t)	Initial target ER (based on Zone) Healthy: 20%	Initial target TAC (t)	Previous Year TAC from HDR (t)	Difference (previous TAC to Initial target TAC) (t)	50% of the Change in TAC (t)	Calculated or “re-start” TAC (t)	“Finish” TAC (t)	Potential ER	Does this exceed Max 1.5 Target ER? (Y/N)
2024	39,745	67,425	20%	13,485	17,282	-3,797	-1,899	15,384	n/a	22.8%	No
2025	65,704	72,644	20%	14,529	15,384	-855	-428	14,956	13,485	20.6%	No