



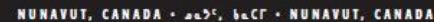
Community-Based Monitoring Network

K. LETTO*, S. SPENCER, J. PAMEOLIK & R. JEPPESEN
NUNAVUT WILDLIFE MANAGEMENT BOARD

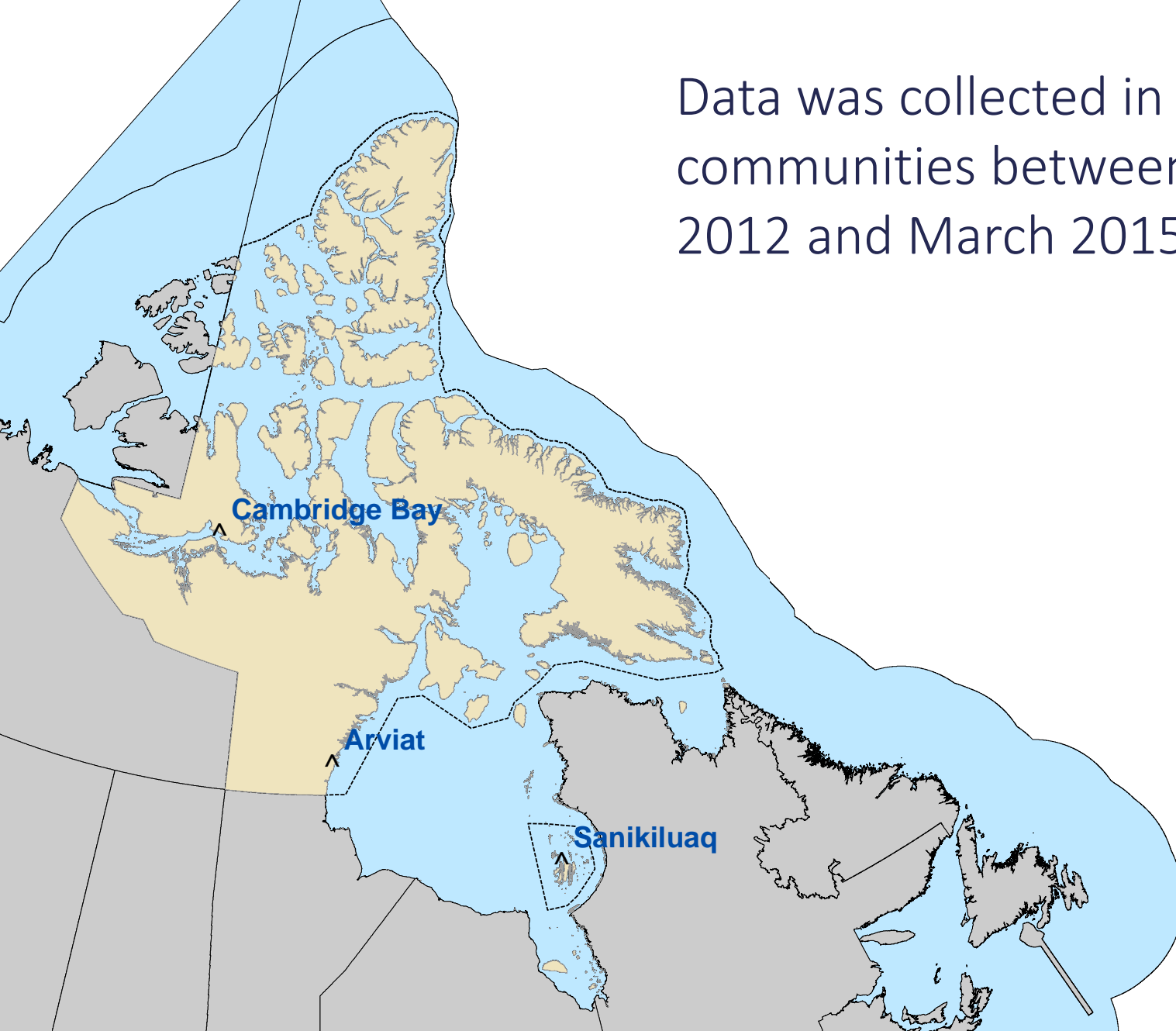


- Established under the *Nunavut Land Claims Agreement* in 1992
- The main instrument of wildlife management in the Nunavut Settlement Area
- Responsibilities:
 - Participating in or facilitating wildlife research;
 - Establishing, modifying or removing levels of total allowable harvest and non-quota limitations;
 - Establishing and/or adjusting the basic needs level;
 - Conducting the Nunavut Wildlife Harvest Study;
 - Identify areas of high biological productivity;
 - Approve designations of Species at Risk; and
 - Approve plans for management and protection of wildlife and wildlife habitat

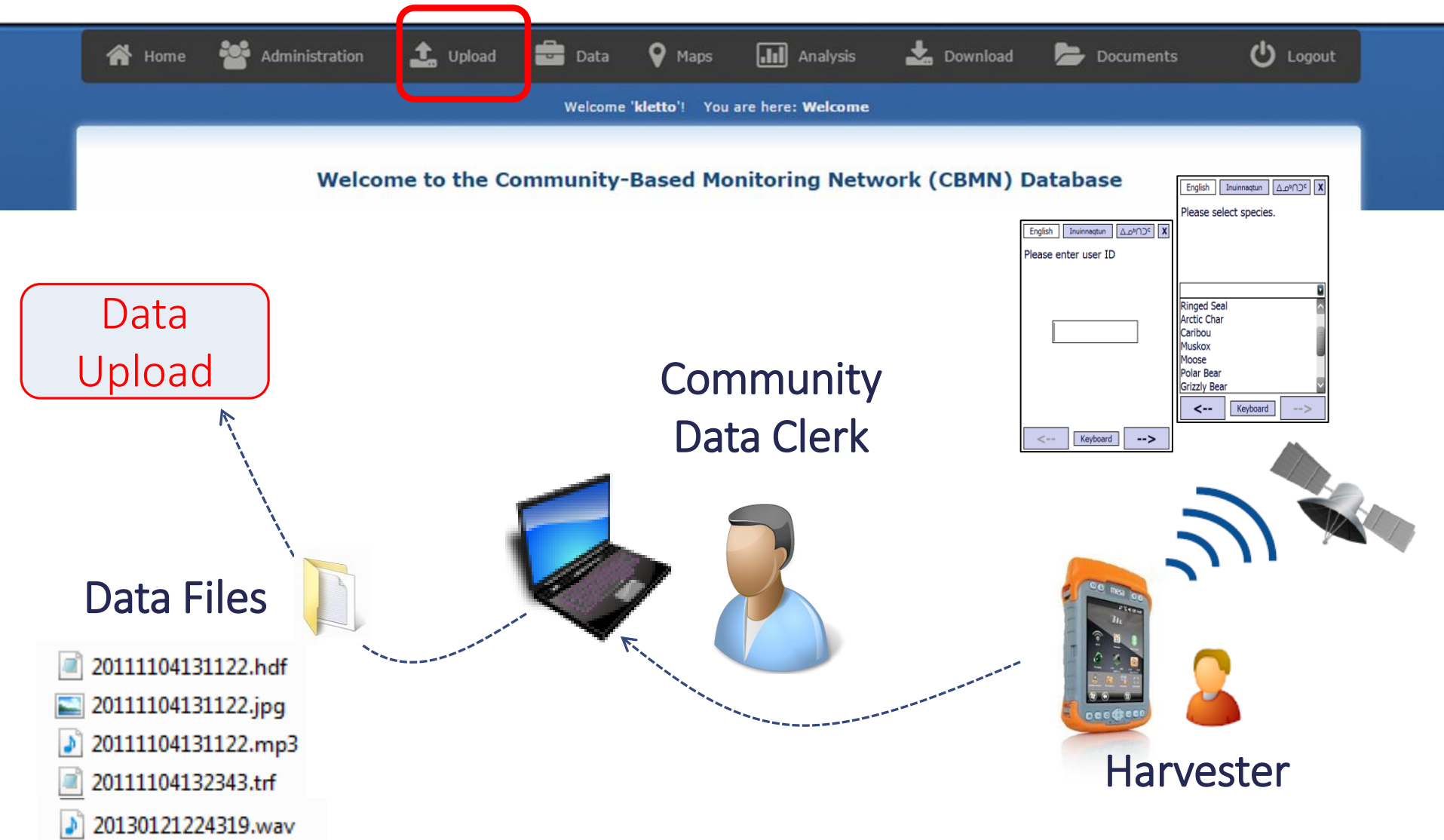
- Nunavut Wildlife Harvest Study: 1996-2001
- Community-based Monitoring Network Pilot Study: 2012 - 2015



Data was collected in three communities between February 2012 and March 2015



Overview of the CBMN



Online Secure Database

[Home](#)
[Administration](#)
[Upload](#)
[Data](#)
[Maps](#)
[Analysis](#)
[Download](#)
[Documents](#)
[Logout](#)

Welcome 'kletto'! You are here: [Data](#) > [Trips](#)

ID	Community & Harvester			Time					Trip				Data		Actions
Trip	Arviat	Harvester...	User	Upload	Apr 2014	Start	End	Time	Transport...	D	WP	Info	H	O	Search by ID
4347	Arviat			28th. 12:33	Apr 2014	18th. 19:34	18th. 22:47	3hrs	Snowmobile	20.73	108		0	0	
4348	Arvi												0	1	
4351	Arvi												0	1	
4352	Arvi												0	0	
4353	Arvi												3	0	
4356	Arvi												3	1	
4357	Arvi												0	0	
4358	Arvi												10	0	
4359	Arvi												2	0	
4361	Arvi												2	1	
4362	Arvi												0	0	
4363	Arvi												0	0	
4364	Arvi												0	0	
4365	Arvi												0	0	
4366	Arvi												1	0	
4367	Arvi												0	0	
4369	Arvi												0	1	
4370	Arvi												0	1	
4371	Arvi												0	0	
4373	Arvi												1	0	
4374	Arvi												1	0	
4375	Arvi												0	0	
4376	Arvi												0	0	
4377	Arvi												0	0	
4378	Arvi												2	0	
4379	Arvi												3	0	
4381	Arvi												1	0	
4382	Arvi												0	0	

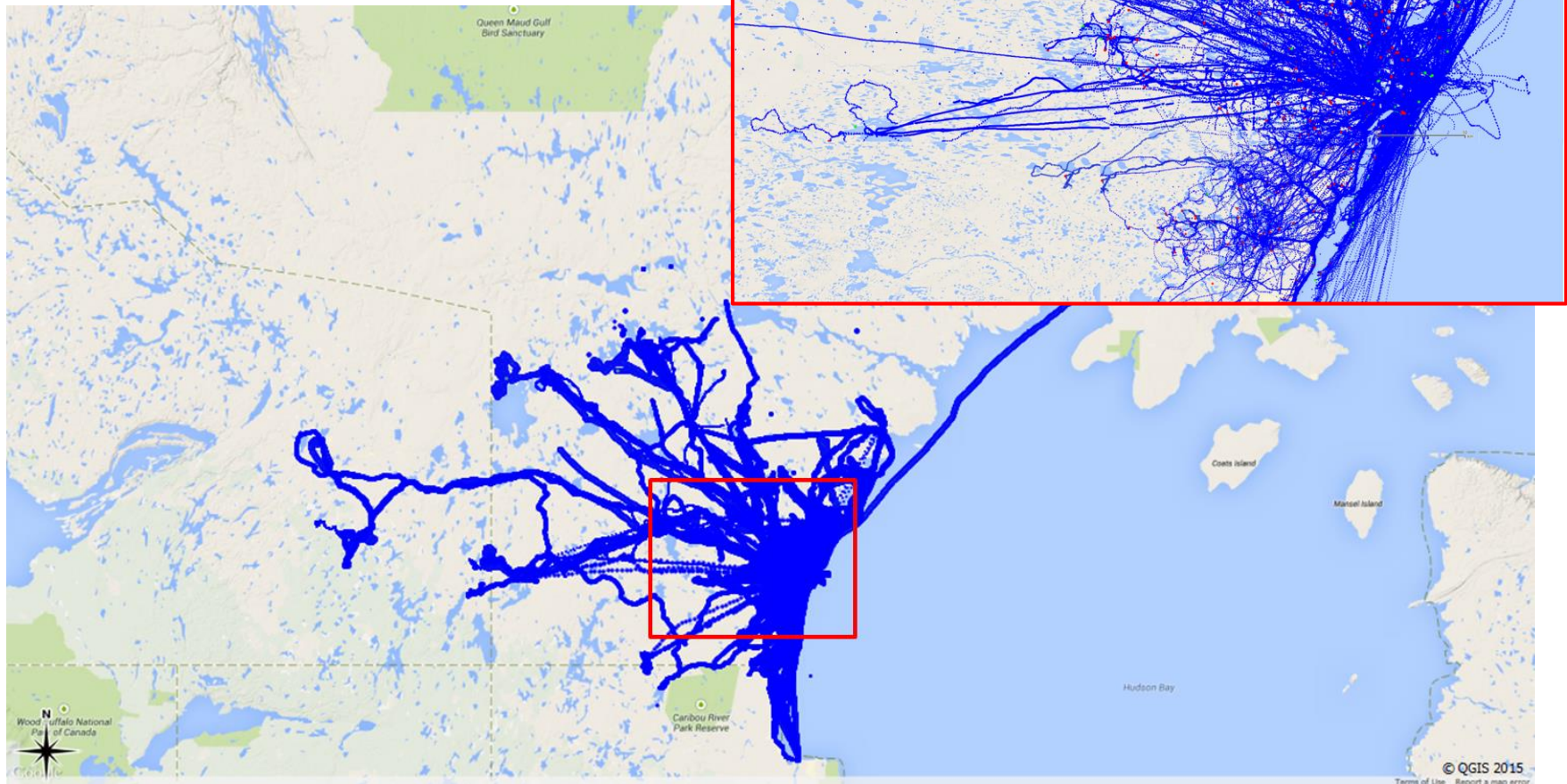


January 2012 – March 2015

Waypoints: 2,124,263

Harvest Records: 5,379

Observation Records: 2,239



Data Utility

- Documentation of Inuit Qaujimagatuqangit / TEK
- Early detection of parasites or disease
- Species range expansion
- Spatial and temporal patterns of harvesting
- Identification of habitat and traditional hunting areas
- Identification of important travel routes
- Struck and lost rates
- Bycatch
- Hunter effort data

Community Perspective

“Getting information for the community is what we need. It's something that should have been done long before”

“We are making a difference because the information collected comes right from the hunter”

“I'm glad to share my knowledge about wildlife”

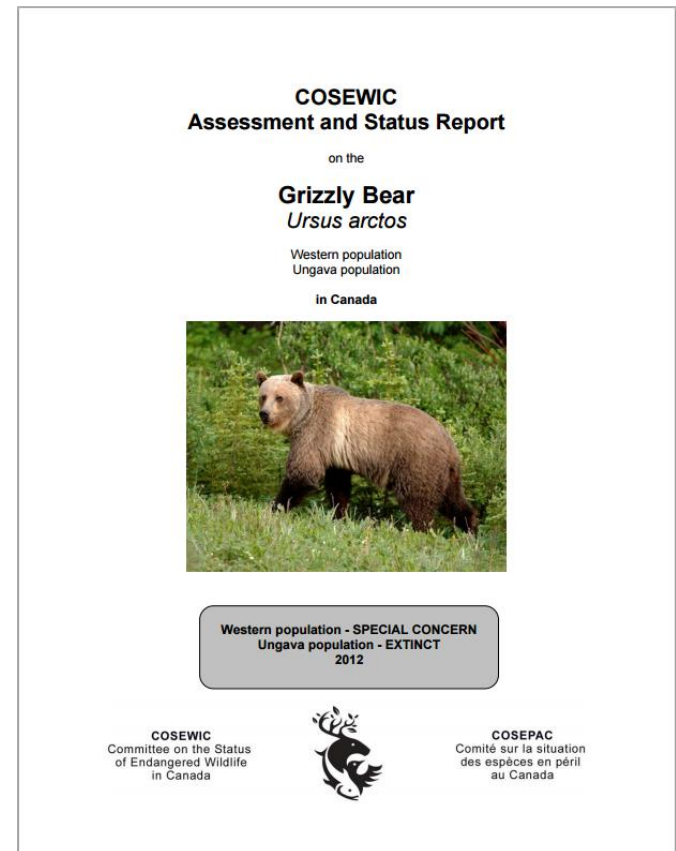
“Our participation in the study will help to improve the understanding about the wildlife”

“It is amazing how one thing can make a difference to the community and for the future of hunters”

CASE STUDY:

Grizzly Bear as a Species at Risk

- Assessment of the utility of the CBMN data in making wildlife management decisions
- Environment Canada request for NWMB decision in July 2013



CASE STUDY:

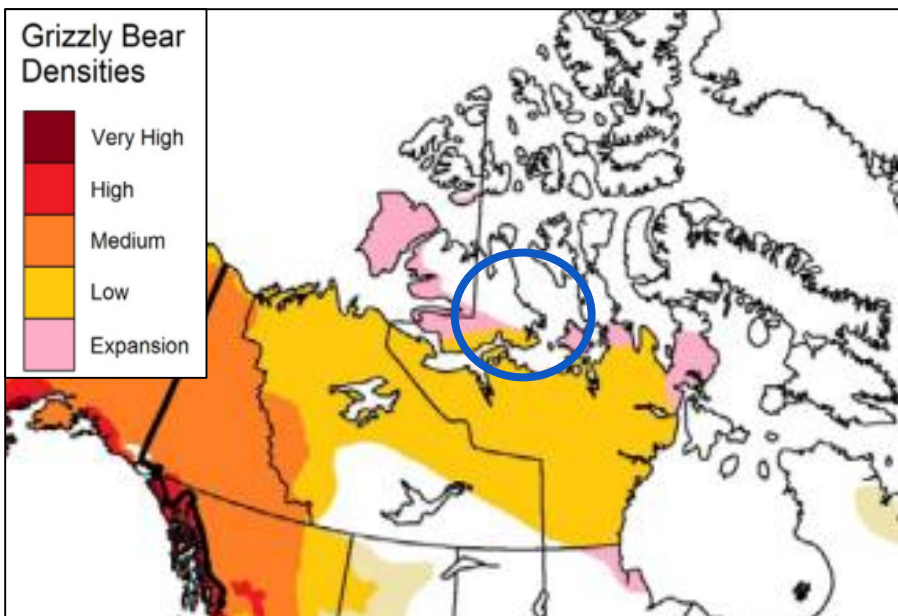
Grizzly Bear as a Species at Risk

- 20 harvest records and 24 observation records
- 1 defense kill
- 3 audio records of dangerous human – bear interactions

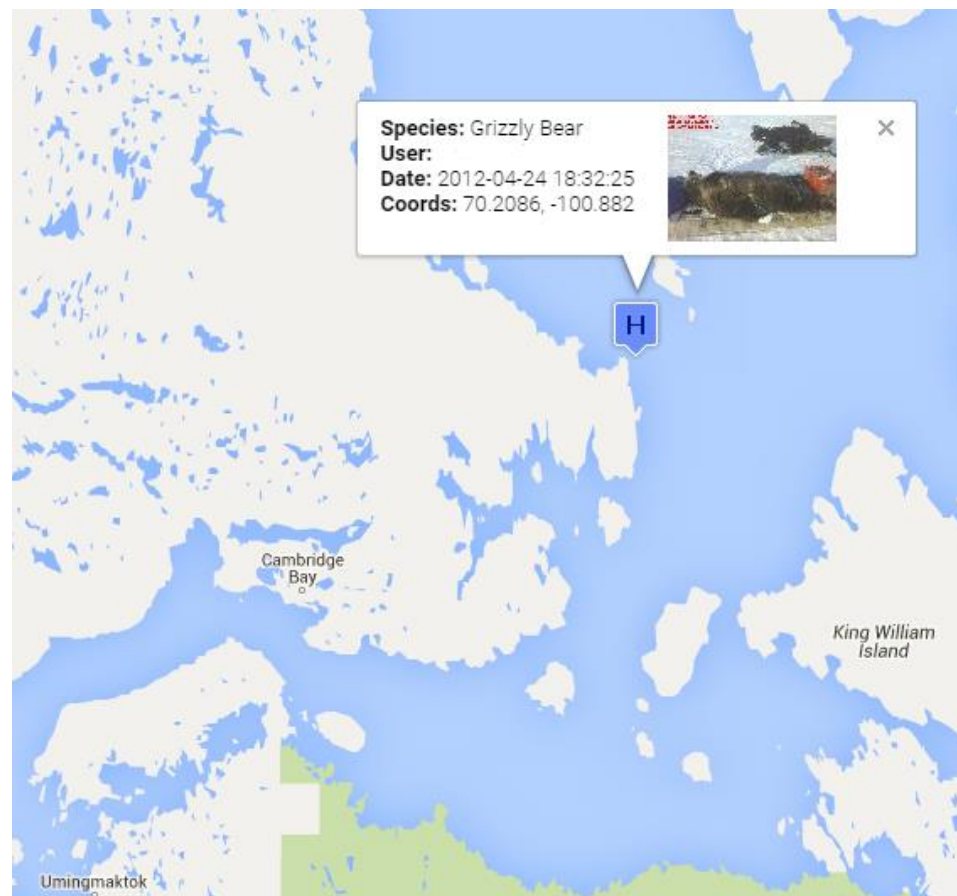


CASE STUDY:

Grizzly Bear as a Species at Risk



Source: COSEWIC 2012



CASE STUDY:

Grizzly Bear as a Species at Risk

	Arviat	Cambridge Bay
NWHS active and intensive hunters registered (1996-2001)	75 hunters	76 hunters
Grizzly harvests reported 1996-2001	6 bears	2 bears
CBMN Hunters (2012-2014)	26 hunters	11 hunters
Grizzly harvests reported 2012-2014	11 bears	8 bears
Estimated community harvest (2012-2014)	15 bears/yr	25 bears/yr

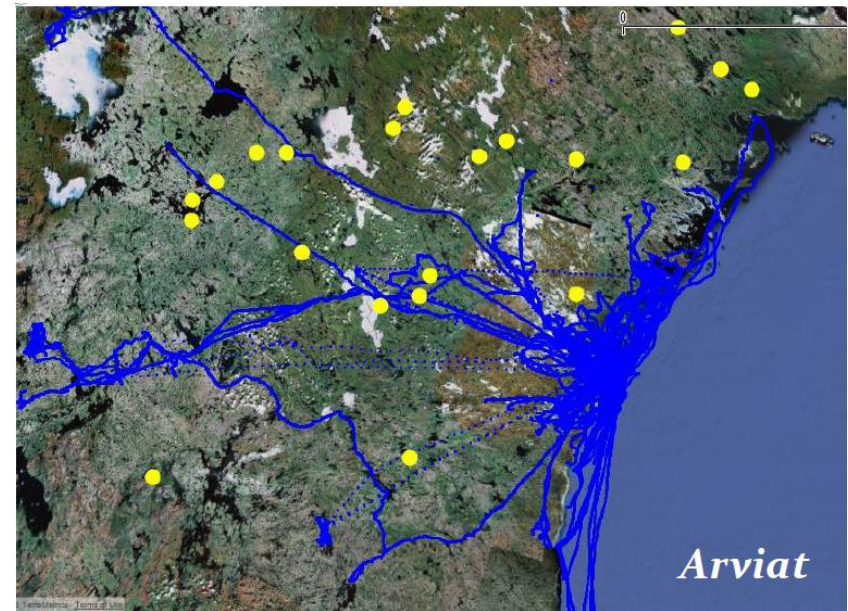
CASE STUDY:

Grizzly Bear as a Species at Risk

- Reflects concerns for public safety
- Indicates range expansion
- Highlights population growth

Other Applications

- Wildlife research
- Supports community positions
- Land use studies and planning
- Environmental impact assessment



2014-06-06 12:46Z
Lat: 56° 33' 14.9898" N
Lon: 79° 7' 18.8058" W
20140606055650

Contact Information

Nunavut Wildlife Management Board

Website: www.nwmb.com

Email: receptionist@nwmb.com

Phone: 867-975-7300