









# ANALYSIS Methods

- 1) Studies of the seasonal range of the species in Nunavut and adjacent waters by documenting local and written reports of their occurrence;
- 2) Appearance and behavioural differences of animals from different areas of Nunavut and adjacent waters.
- 3) Studies of genetic and contaminant differences of animals from different parts of Nunavut and adjacent waters.
- 4) Tracking animals, using satellite-linked transmitters, to estimate their seasonal range and delimit areas of aggregations.

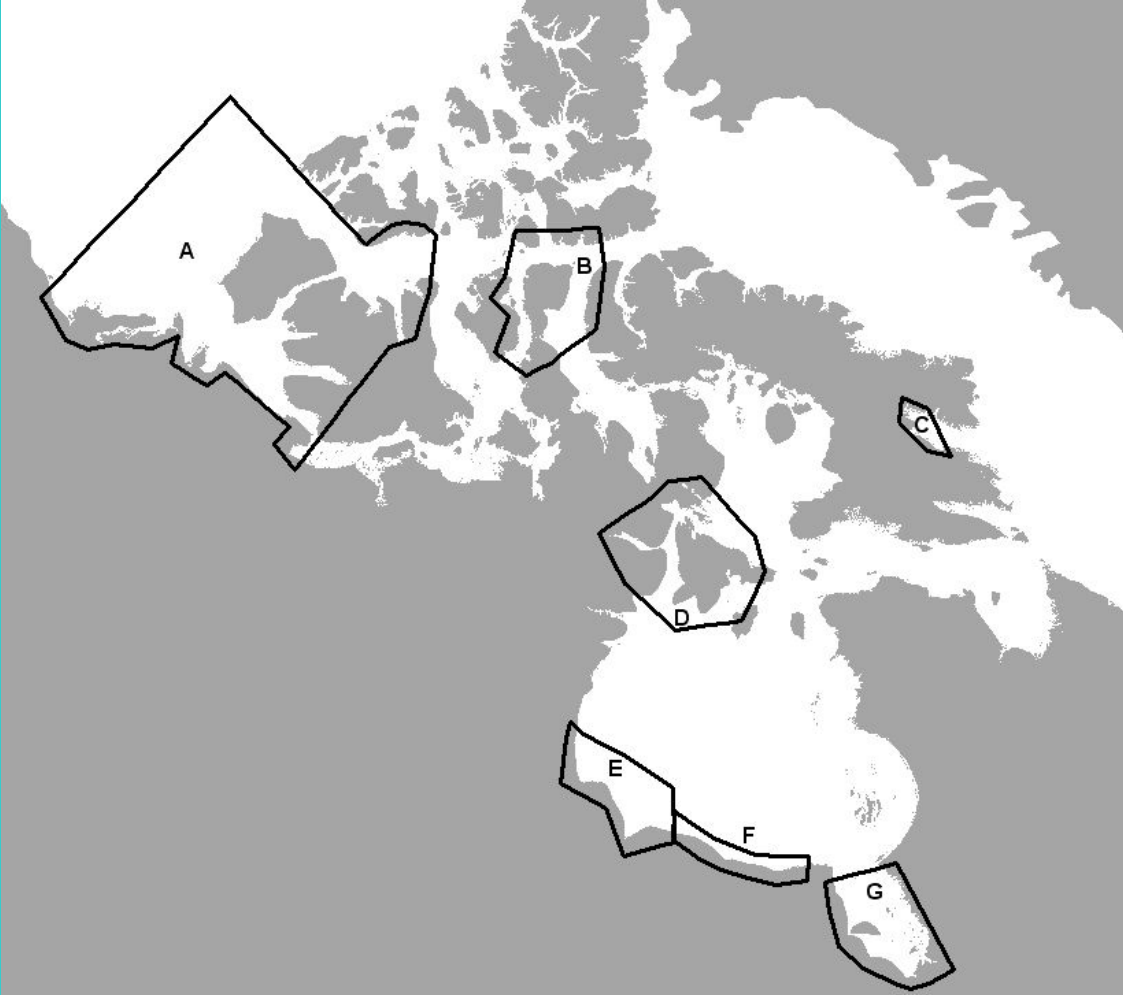
# የዎርዎርዎላውሽን ክልላዊነት

- 1) የክልላዊነት ማረጋገጫ ለመጠየቅ  
የሚያስፈልጉ ጥናቶች ማድረግ ለማድረግ  
ለሚፈልጉት የክልላዊነት  
የደንበኞች ማረጋገጫ ለማድረግ  
በከፍተኛ ሁኔታ ለመሥራት  
በከፍተኛ ሁኔታ ለማድረግ  
የደንበኞች ማረጋገጫ  
የሚፈልጉት ማረጋገጫ
- 2) ለክልላዊነት ማረጋገጫ  
የሚያስፈልጉት ማረጋገጫ  
ለማድረግ ለማድረግ  
ለማድረግ ለማድረግ  
ለማድረግ ለማድረግ
- 3) የክልላዊነት ማረጋገጫ ለመጠየቅ  
የሚያስፈልጉት ማረጋገጫ  
ለማድረግ ለማድረግ  
ለማድረግ ለማድረግ  
ለማድረግ ለማድረግ
- 4) የክልላዊነት ማረጋገጫ ለመጠየቅ  
የሚያስፈልጉት ማረጋገጫ  
ለማድረግ ለማድረግ  
ለማድረግ ለማድረግ  
ለማድረግ ለማድረግ



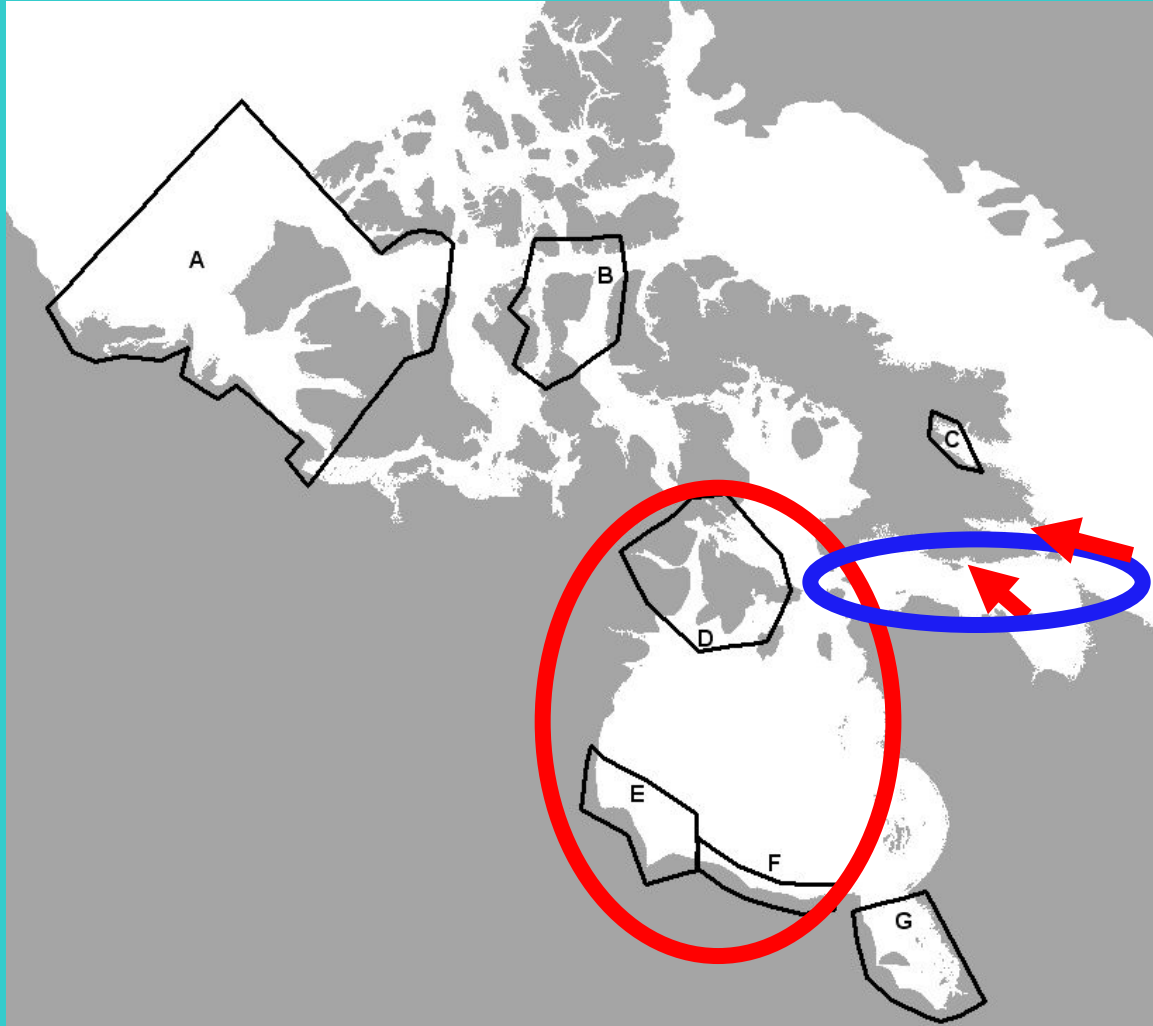
**Beluga stocks:** A- East Beaufort Sea, B- Baffin Bay, C- Cumberland Sound, D- Northern Hudson Bay, E- Western Hudson Bay, F- Southern Hudson Bay, James Bay.

ΔL<sup>2</sup>: <: δ<sup>2</sup>π<sup>2</sup> < . ρρ<sup>2</sup> < <  
 ΔL<sup>2</sup>: C: <<sup>2</sup>σ<sup>2</sup> < ΔL<sup>2</sup>: b-l-  
 L: Λ<sup>2</sup>ε<sup>2</sup>-Δ<sup>2</sup>ε<sup>2</sup>-σ<sup>2</sup><ρ<sup>2</sup>  
 CρΔ<sup>2</sup>Δ<sup>2</sup> (Λ<sup>2</sup>ε<sup>2</sup>ε<sup>2</sup>C CρΔ<sup>2</sup>Δ<sup>2</sup>  
 ρε<sup>2</sup>ε<sup>2</sup>ρ<sup>2</sup>) 1: ε: Δ<sup>2</sup> < Δ: ε:  
 bε<sup>2</sup>ε<sup>2</sup>  
 CρΔ<sup>2</sup>Δ<sup>2</sup> εε<sup>2</sup> ΔL<sup>2</sup>ρ<sup>2</sup>



The stock harvested by hunters from Iqaluit is not known for certain, but is thought to be the Western-Northern-Southern (WNS) Hudson Bay beluga stock (E-D-F), to whom they are most similar genetically.

ᑕᑲᑲ ᑭᑭᑲᑲ ᑲᑲᑲᑲᑲᑲ  
ᑲᑲᑲᑲᑲᑲᑲᑲᑲ ᑲᑲᑲᑲᑲᑲᑲᑲ  
ᑲᑲᑲᑲᑲᑲᑲᑲᑲᑲ ᑲᑲᑲᑲᑲᑲᑲᑲᑲ  
ᑲᑲᑲᑲᑲᑲᑲᑲᑲᑲ ᑲᑲᑲᑲᑲᑲᑲᑲᑲ  
ᑲᑲᑲᑲᑲᑲᑲᑲᑲᑲ ᑲᑲᑲᑲᑲᑲᑲᑲᑲᑲ  
ᑲᑲᑲᑲᑲᑲᑲᑲᑲᑲ ᑲᑲᑲᑲᑲᑲᑲᑲᑲᑲᑲᑲ  
(ᑲ-ᑲ-ᑲ),  
ᑕᑕᑕ ᑲᑲᑲᑲᑲᑲ ᑲᑲᑲᑲᑲᑲᑲᑲᑲ.







Narwhal stocks: A- Somerset, B- Admiralty, C- Eclipse, D- East Baffin, E- Northern Hudson Bay, F – Parry Island, G- Jones Sound, H – Smith Sound.

ՀԱՆՑԵ ԵՈՒՄՆԵՐԸ : Վ: ՃՐԳԻԾԿ  
 ԳՐՐԳԵՇՄԵՆ: <: ՃՎՆՎԻՆԿ ԵՆՐԳԵՆՉՎՆԵՆ:  
 Շ: ԲԿՈԼՇԵՐԾԿ ՇԴԾԿՄԵՆ; Ե: ՎԵՋԿ  
 ՃԼՄԻՐԸ: Ն: ԾՎՊՁՄԵՆ ՇԴԾԿՆԻՎԿ; Ն:  
 ԾՎԵՐՏՎԿ ՃԼՄԻՐԸ; Լ: ՎԾԴՃԿՅԿ ՃԼՄԵՆ;  
 Ձ: ԿՁՊՅՎՊՁՎԿ ՃԼՄԵՆ

