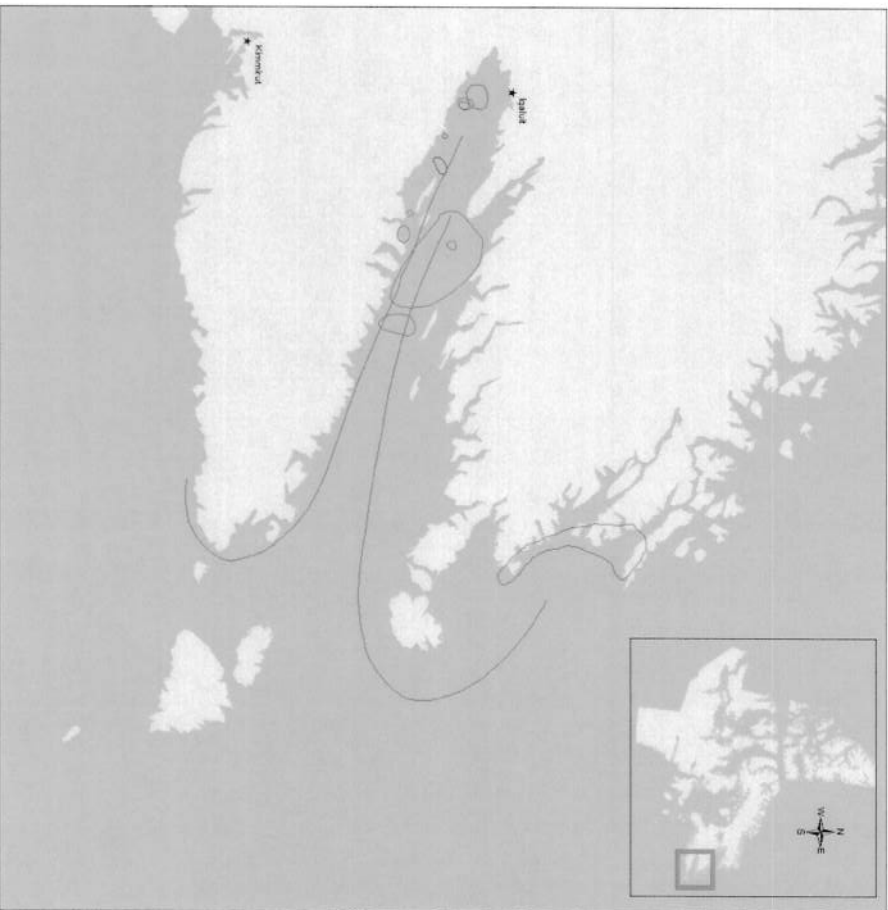


Table 22: Narwhal – Qikiqtarjuaq

Label Number	Interview Code	Map Code	Species	Month/Year	Comments
1_54	QIK_1_0310	NW_1	Narwhal	Jul-Aug	
1_55	QIK_1_0310	NW_2_AP	Narwhal	Sept	
2_84	QIK_2_0310	NW_1_AP5	Narwhal	All Year	
3_108	QIK_3_0310	NW_1_AP	Narwhal	Sept-Oct	
3_109	QIK_3_0310	NW_2_AP	Narwhal	Sept	
4_110	QIK_4_0310	NW_1_AP	Narwhal	Sept-Oct	
4_111	QIK_4_0310	NW_2	Narwhal	May-Jul	
4_112	QIK_4_0310	NW_3_AP	Narwhal	Jul-Oct	
5_76	QIK_5_0310	NW_1_AP	Narwhal	Sept-Oct	
5_81	QIK_5_0310	NW_3_AP	Narwhal	Jul-Oct	
5_82	QIK_5_0310	NW_4_SP	Narwhal	Jul-Aug	
6_106	QIK_6_0310	NW_1_AP	Narwhal	Sept-Oct	
6_107	QIK_6_0310	NW_2	Narwhal	May-Jul	
6_108	QIK_6_0310	NW_3_AP	Narwhal	Jul-Oct	
6_109	QIK_6_0310	NW_4	Narwhal	Jul-Aug	
6_110	QIK_6_0310	NW_5	Narwhal	Aug-Sept	
6_111	QIK_6_0310	NW_6	Narwhal	Aug-Sept	
6_112	QIK_6_0310	NW_7	Narwhal	Aug-Sept	
6_113	QIK_6_0310	NW_8	Narwhal	Aug-Sept	
6_114	QIK_6_0310	NW_9	Narwhal	Aug-Sept	
6_115	QIK_6_0310	NW_10_AP	Narwhal	Oct	
8_81	QIK_8_0310	NW_1_AP	Narwhal	Sept-Oct	
8_82	QIK_8_0310	NW_2_AP	Narwhal	Sept	
8_90	QIK_8_0310	NW_3_SPA	Narwhal	Aug	

Figure 29: Narwhal - Iqaluit

Narwhal Area of Occupation - Iqaluit



- Interview**
- IQA_01_0112
 - IQA_02_0112
 - IQA_03_0112
 - IQA_06_0112
 - IQA_09_0112
 - IQA_12_0112
 - IQA_13_0212

Projection: Canada Lambert Conformal Conic
 Prepared by: Corinna Myrland
 CA/DCE Fisheries and Sealing Division
 June 2012

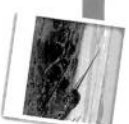


Table 23: Narwhal – Iqaluit

Interview Code	Species	Category	Present – P Historic – H	Year	Months	Comments
IQA_02_0112	Narwhal	Mammal	P		August	
IQA_02_0112	Narwhal	Mammal	P		June	
IQA_12_0112	Narwhal	Mammal	H			
IQA_12_0112	Narwhal	Mammal	P	2007	June	
IQA_12_0112	Narwhal	Mammal	P		March	
IQA_13_0212	Narwhal	Mammal	H		September	
IQA_01_0112	Narwhal	Mammal	P		July, August	
IQA_03_0112	Narwhal	Mammal	P		July, August	
IQA_06_0112	Narwhal	Mammal	H		August	
IQA_09_0112	Narwhal	Mammal	P		July, August	caught a narwhal with a tusk
IQA_09_0112	Narwhal	Mammal	P		April, May	caught one with no tusk
IQA_01_0112	Narwhal	Mammal	P		June, July	Migration into Froebisher Bay
IQA_01_0112	Narwhal	Mammal	P		September, October	Migration out of Froebisher Bay

Figure 30: Narwhal - Kimmirut

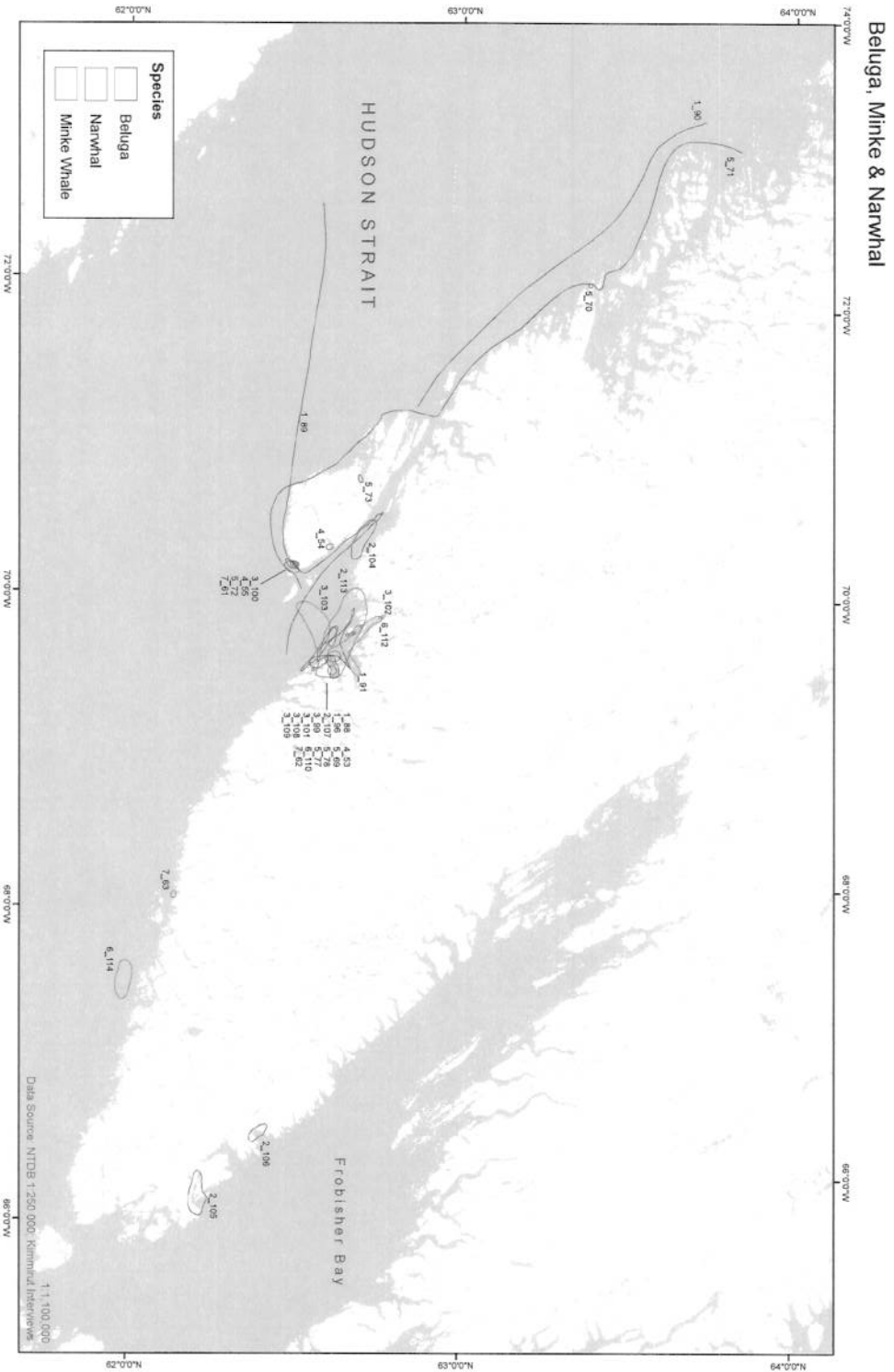
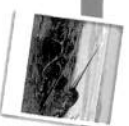


Table 24: Narwhal – Kimmirut

Map Code	Map Label	Species	Present - P Historic - H	Special Coding	Year	Months	Comments
Bel_1	1_88	Beluga	P			3,4	at the floe edge
Bel_2_MP	1_89	Beluga	P	M			
Bel_3_u	1_90	Beluga	P	u			
Bel_1	2_104	Beluga	P			4,5,6,10,11	possible migration route in October at the floe edge
Bel_2	2_105	Beluga	P			7,8	
Bel_3	2_106	Beluga	P			7,8	
Bel_2	3_100	Beluga	P			6,7	
Bel_1	3_99	Beluga	P			10,11	
Bel_1	4_53	Beluga	P			9,10	
Bel_2	4_54	Beluga	P			6	
Bel_3	4_55	Beluga	P			6	
Bel_1	5_69	Beluga	P			4,5	
Bel_2	5_70	Beluga	P			10	
Bel_3_MP	5_71	Beluga	P	M			Migrate towards Kimmirut in May and migrate out away from Kimmirut in October
Bel_4	5_72	Beluga	P			6	
Bel_5_H	5_73	Beluga	H			7	
Bel_1	6_110	Beluga	P			6,10,11	
Bel_1	7_61	Beluga	P		0	6	migrating into the area
Bel_2	7_62	Beluga	P		0	10,11	migrating out of the area
MW_1_H	1_96	Minkie Whale	H		1970	8	
MW_1	2_113	Minkie Whale	P			7,8	
MW_1	3_108	Minkie Whale	P			9	
MW_2	3_109	Minkie Whale	P			9	
MW_1_H	3_77	Minkie Whale	H			8	
MW_2_H	5_78	Minkie Whale	H			8	
MW_1_H	6_114	Minkie Whale	H		1990	8	
NW_1	1_91	Narwhal	P		1982, 2008	9,10	In Kimmirut in September 1982 and October 2008
NW_1_H	2_107	Narwhal	H		1986	6	caught six Narwhal
NW_1_H	3_101	Narwhal	H		1980's	6	
NW_2	3_102	Narwhal	P		2007	10,11	
NW_3_H	3_103	Narwhal	H		1982	6	
NW_1	6_112	Narwhal	P			10	Rarely come into the Kimmirut area but he saw two
NW_1_H	7_63	Narwhal	H		0	8	



NUNAVUT COASTAL RESOURCE INVENTORY

Figure 31: Narwhal - Sankiluaq

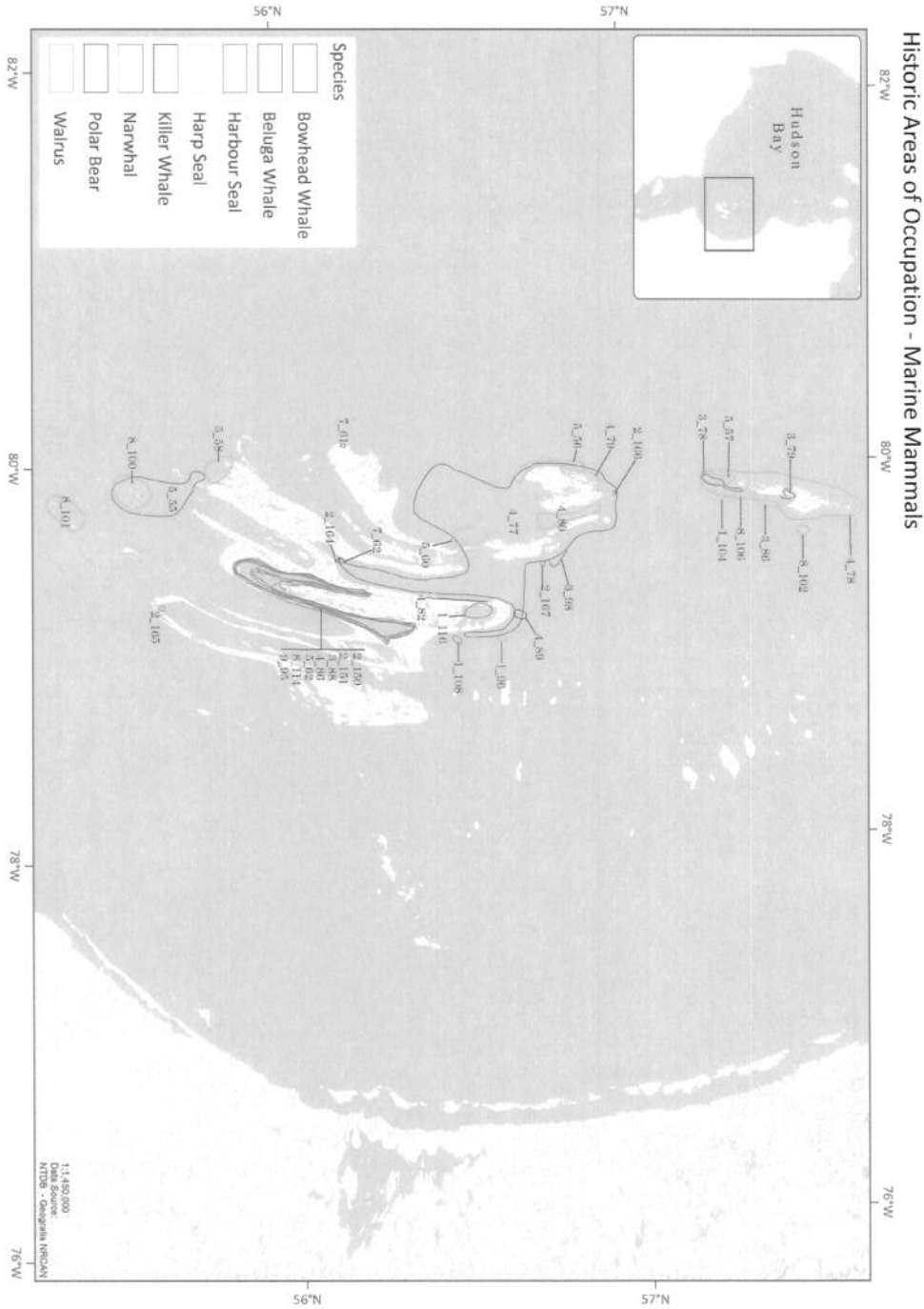


Table 25: Narwhal – Sanikiluaq

Label Number	Interview Code	Map Code	Type	Category	Year	Time of Year	Comments
L_104	SANI_1_0211	HS_L_H	Harp Seal	Marine Mammal		June to August	
L_108	SANI_1_0211	HBS_L_H	Harbour Seal	Marine Mammal		All year	
L_116	SANI_1_0211	BW_2_H	Boowhead Whale	Marine Mammal	<2000		
L_96	SANI_1_0211	Wal_4_H	Walrus	Marine Mammal		December to February	
2_150	SANI_2_0211	HBS_2_H	Harbour Seal	Marine Mammal		All year	These were freshwater seals that kept areas of the ice open during the winter. These seals are not seen often today.
2_151	SANI_2_0211	HBS_3_H	Harbour Seal	Marine Mammal		All year	These were freshwater seals that kept areas of the ice open during the winter. These seals are not seen often today.
2_164	SANI_2_0211	NW_1_H	Narwhal	Marine Mammal	1990's	December	He caught a young narwhal that was trapped in the ice here
2_165	SANI_2_0211	BW_1_H	Boowhead Whale	Marine Mammal		June to August	He saw a calf here but does not remember what year it was
2_166	SANI_2_0211	BW_2_H	Boowhead Whale	Marine Mammal		June to August	
2_167	SANI_2_0211	BW_3_H	Boowhead Whale	Marine Mammal		June to August	
3_78	SANI_3_0211	PB_10_H	Polar Bear	Marine Mammal		December to March	He hunted polar bears in this area in the 1970's
3_79	SANI_3_0211	PB_11_H	Polar Bear	Marine Mammal		December to March	He hunted polar bears in this area in the 1970's
3_86	SANI_3_0211	HS_L_H	Harp Seal	Marine Mammal		July to September	
3_88	SANI_3_0211	HBS_L_H	Harbour Seal	Marine Mammal	early 1980's	All year	The harbour seals were hunted out of the lake in the early 1980's because they were eating too much of the char supply
3_98	SANI_3_0211	BW_1_H	Boowhead Whale	Marine Mammal		July and August	
4_77	SANI_4_0211	PB_1_H	Polar Bear	Marine Mammal		November to March	
4_78	SANI_4_0211	Wal_1_H	Walrus	Marine Mammal		June to September	
4_79	SANI_4_0211	Wal_2_H	Walrus	Marine Mammal		June to September	
4_80	SANI_4_0211	Wal_3_H	Walrus	Marine Mammal		June to September	
4_82	SANI_4_0211	HS_L_H	Harp Seal	Marine Mammal		June to September	
4_86	SANI_4_0211	HBS_L_H	Harbour Seal	Marine Mammal		All year	
4_89	SANI_4_0211	KW_L_H	Killer Whale	Marine Mammal		July to September	
5_55	SANI_5_0211	PB_L_H	Polar Bear	Marine Mammal		November to March	
5_56	SANI_5_0211	Wal_L_H	Walrus	Marine Mammal		July to September	
5_57	SANI_5_0211	Wal_2_H	Walrus	Marine Mammal		July to September	
5_58	SANI_5_0211	Wal_3_H	Walrus	Marine Mammal		July to September	
5_60	SANI_5_0211	HS_L_H	Harp Seal	Marine Mammal		July to September	
5_62	SANI_5_0211	HBS_L_H	Harbour Seal	Marine Mammal		July to September	
7_61	SANI_7_0211	Bel_3_H	Beluga Whale	Marine Mammal	1990's	All year	
7_62	SANI_7_0211	Bel_4_H	Beluga Whale	Marine Mammal		January	Beluga were stuck in the ice in early winter
8_100	SANI_8_0211	Wal_2_H	Walrus	Marine Mammal		July to October	
8_101	SANI_8_0211	Wal_3_H	Walrus	Marine Mammal		July to October	
8_102	SANI_8_0211	Wal_4_H	Walrus	Marine Mammal		July to October	
8_106	SANI_8_0211	HS_L_H	Harp Seal	Marine Mammal			
8_114	SANI_8_0211	HBS_L_H	Harbour Seal	Marine Mammal		All year	Found in the lake in the 70's
9_95	SANI_9_0211	Hbs_L_H	Harbour Seal	Marine Mammal		All year	

