

Walrus Harvesting Locations

Stewart, R.E.A. 2008. Redefining Walrus Stocks in Canada. *Arctic*. 61(3):292-308.

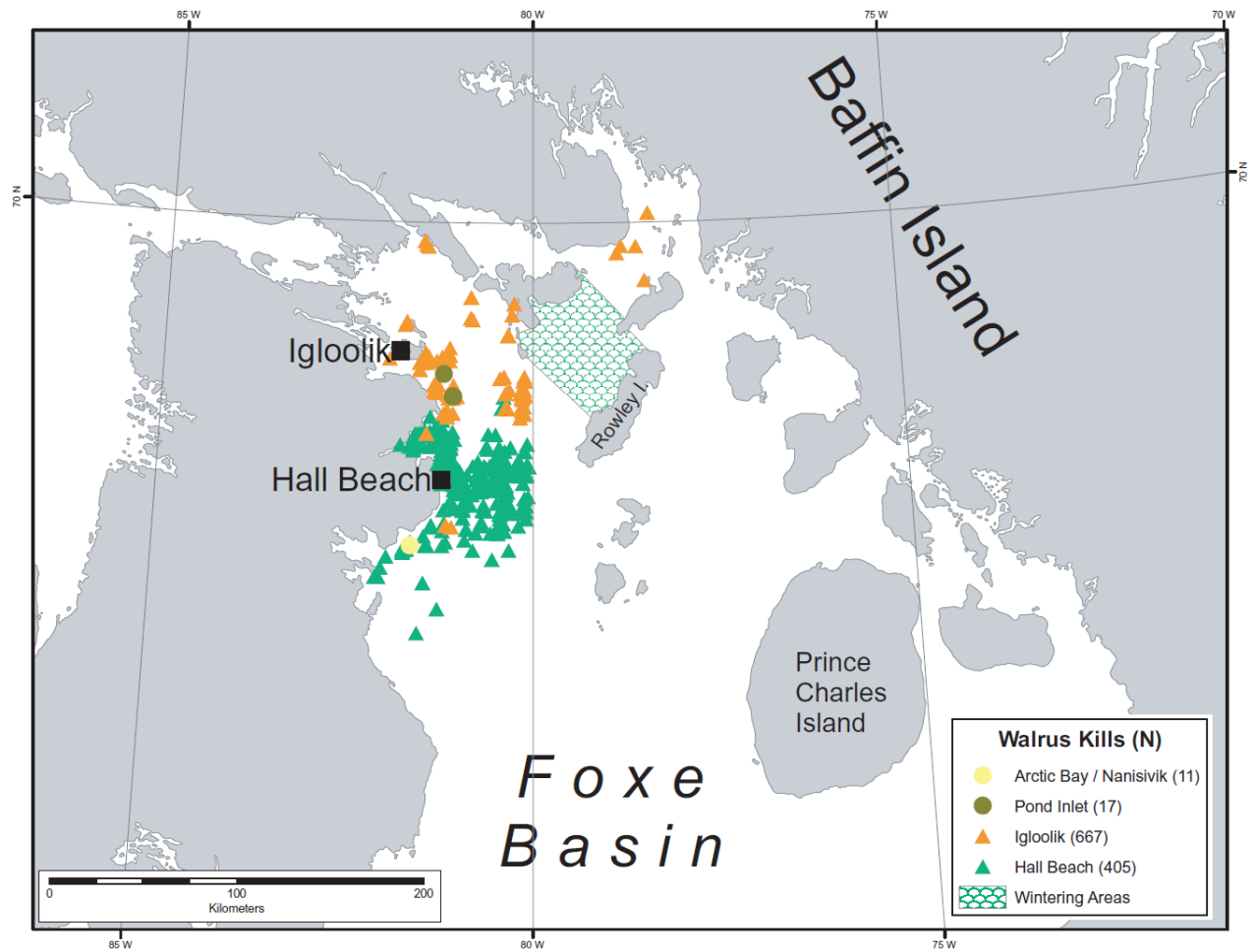


FIG. 5. Foxe Basin walrus harvesting locations for Igloolik and Hall Beach (Priest and Usher, 2004) and wintering areas (Born et al., 1995). Each kill symbol may represent more than one animal killed; N is the number of walrus reported by each community in the Priest and Usher (2004) database.

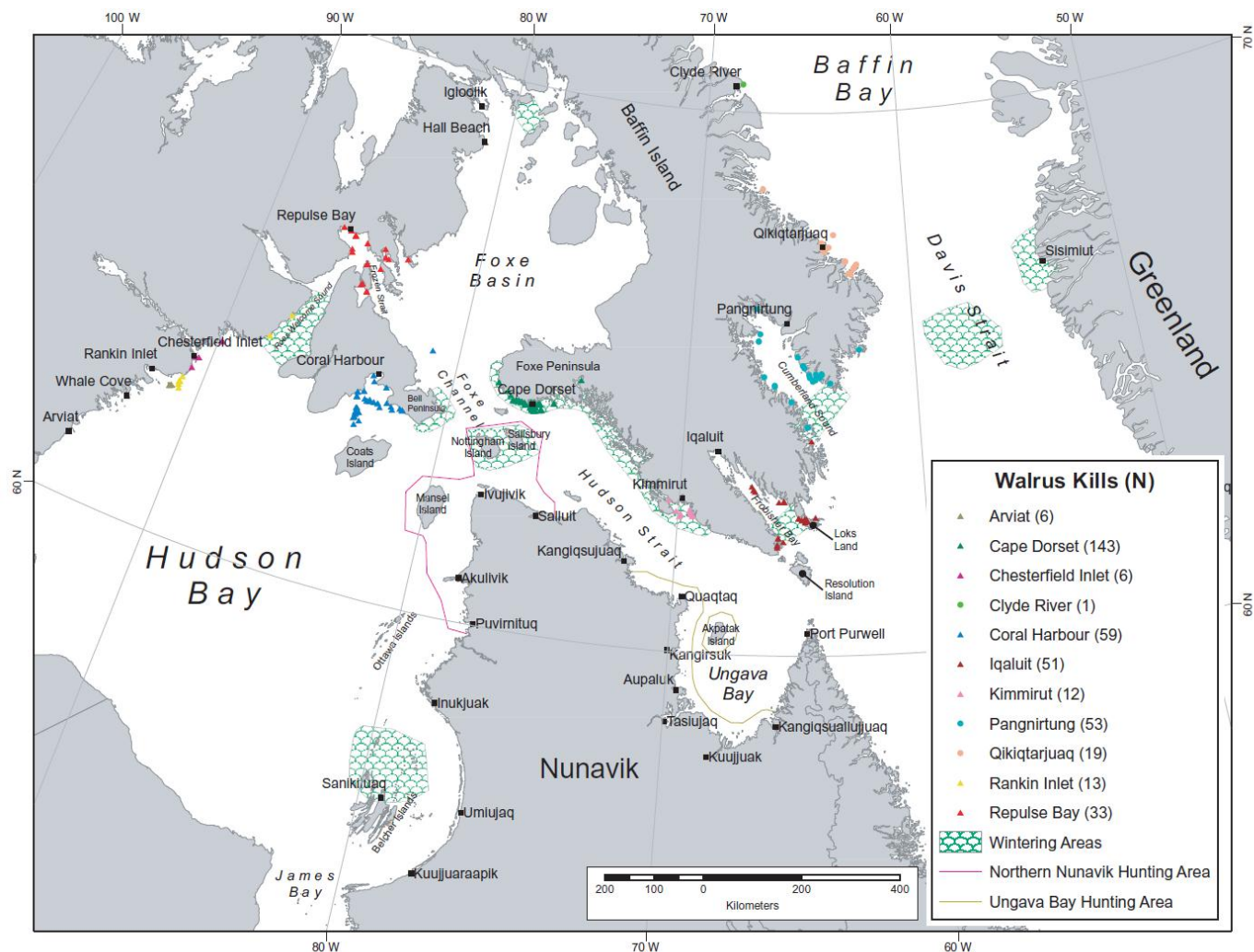


FIG. 6. Hudson Bay–Davis Strait walrus harvesting locations for Arviat, Cape Dorset, Chesterfield Inlet, Clyde River, Coral Harbour, Iqaluit, Kimmirut, Pangnirtung, Qikiqtarjuaq, Rankin Inlet, and Repulse Bay (Priest and Usher, 2004), Nunavik harvesting areas (interpreted from COSEWIC, 2006), and wintering areas (Born et al., 1995). Each kill symbol may represent more than one animal killed; N is the number of walrus reported by each community in the Priest and Usher (2004) database.