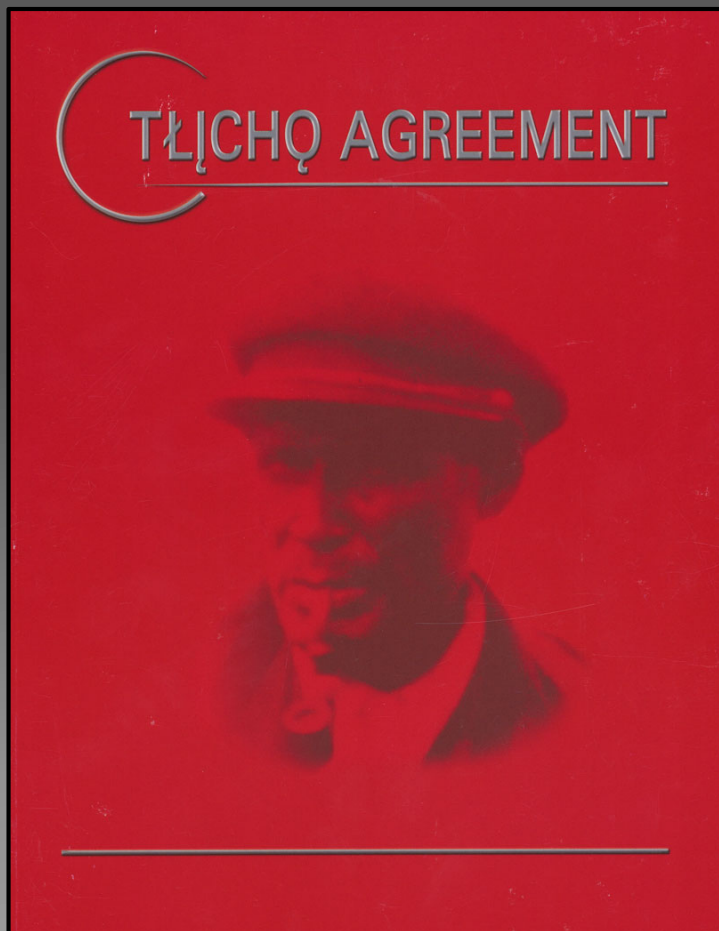




The Wek'èezhìi Renewable Resources Board & 2019 Bluenose-East Caribou Herd Proceeding

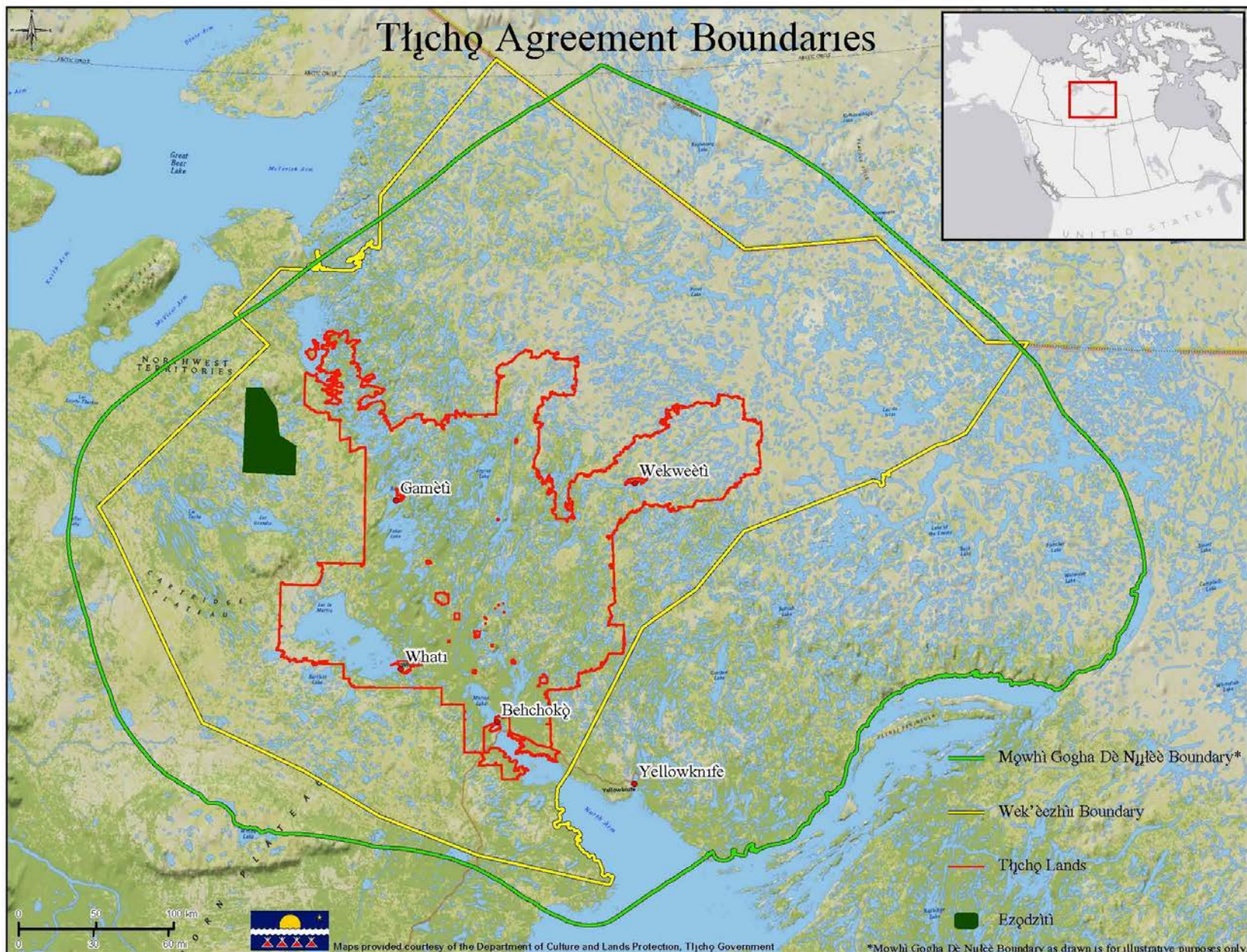
Joseph Judas, Chair & Jody Pellissey, Executive Director
NWMB Bluenose-East Caribou Public Hearing, Kugluktuk
March 2-3, 2020

Wek'èezhì Renewable Resources Board



- WRRB is a co- management board established by the Tłıchǫ Agreement
- Board acts in the public interest; considers the interests of all users in making decisions

Tłıchǫ Agreement Boundaries



Maps provided courtesy of the Department of Culture and Lands Protection, Tłıchǫ Government

*Mǫwhi Gogha Dè Njłèè Boundary as drawn is for illustrative purposes only.

Working together to take care of wildlife,
forests, plants and protected areas in
Wek'èezhìi for present and future generations

ᐱᑦᑭᑦᑭᑦ ᐱᑦᑭᑦᑭᑦᑭᑦ ᑕᑦᑭᑦᑭᑦᑭᑦ, ᑕᑦᑭᑦᑭᑦ ᐱᑦᑭᑦ
ᑕᑦᑭᑦᑭᑦ, ᐱᑦᑭᑦᑭᑦᑭᑦᑭᑦ ᑕᑦᑭᑦᑭᑦ ᐱᑦᑭᑦᑭᑦ ᑕᑦᑭᑦ
Wek'èezhìi ᑕᑦᑭᑦ ᑕᑦᑭᑦᑭᑦᑭᑦ



Considerations

- Inter-relatedness of wildlife, land and people
- Conservation and precautionary principle
- Use of best information available to inform decision making
 - Tłįchǫ knowledge
 - Scientific knowledge
 - Expert opinion

“Strong Like Two People”



2019 Bluenose-East Caribou Herd Proceeding

- *Joint Proposal on Management Actions for the Bluenose-East ʔekwò (Barren-ground caribou) Herd 2019-2021*
- Proposed actions: harvest, predators, habitat and land use, education, and research and monitoring



WRRB Harvest Determination

The WRRB determined that a total allowable harvest of 193 bull caribou shall be implemented for all users of the Bathurst caribou herd within Wek'èezhìi for 2019-2021.



Predators

- Evaluation of the Enhanced North Slave Wolf Harvest Incentive Program
- Implementation of monitoring of wolverine populations
- Protection of the calving grounds from predators



Habitat & Land Use



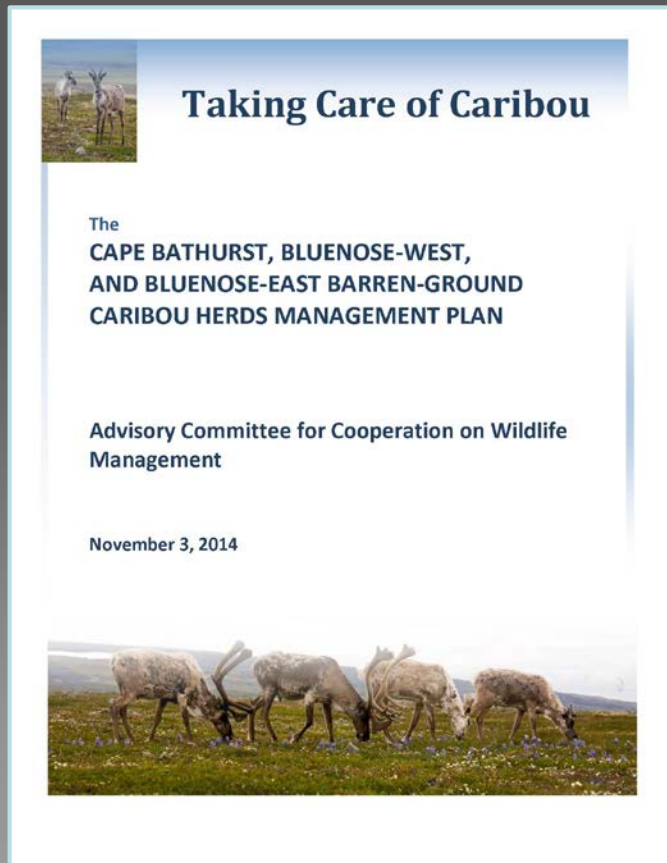
- Identification of high priority habitat and implementation of legal protection measures
- Implementation of Mobile Caribou Conservation Measures in the interim
- Expansion of the Ekwò Nàxoède K'è program to the Bluenose-East caribou range



Research & Monitoring

- Development of a herd-specific adaptive management framework with thresholds linked to specific management actions
- Revisions to the caribou monitoring program

Long-term Management Plan



Advisory Committee for Cooperation on Wildlife Management



Users and managers must act now, in whatever ways possible, to protect the herd so future recovery may be possible

Thank you



WRRB contact info:
102A, 4504-49th Ave, Yellowknife
jpellissey@wrrb.ca, 867-873-5740