

SUBMISSION TO THE
NUNAVUT WILDLIFE MANAGEMENT BOARD AND
NUNAVIK MARINE REGION WILDLIFE BOARD
FOR

Information:

Decision: X

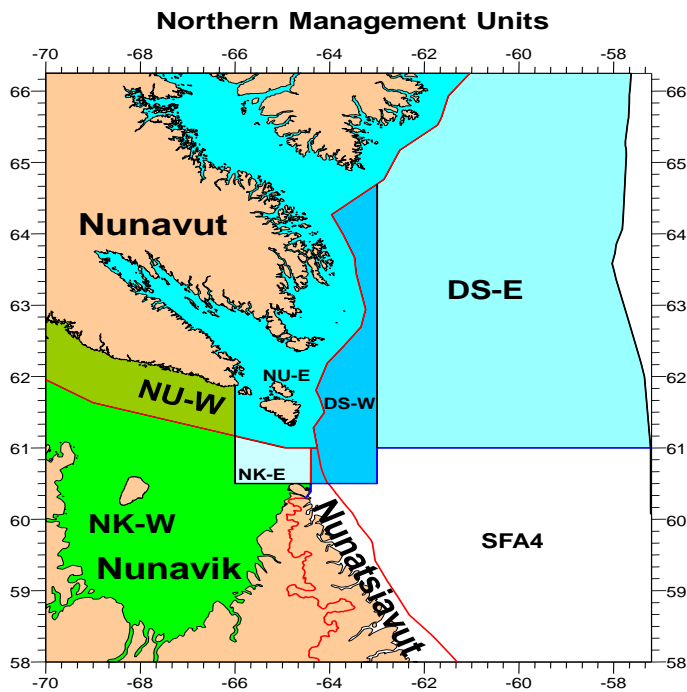
Recommendation: X

Issue: Total Allowable Catch levels for Northern (*Pandalus borealis*) and Striped (*Pandalus montagui*) Shrimp for the 2021-22 season in the Western and Eastern Assessment Zones

Map:

Blue areas – Eastern Assessment Zone

Green areas – Western Assessment Zone



Northern shrimp (*Pandalus borealis*)



Striped shrimp (*Pandalus montagui*)

Background

Two shrimp species (*P. borealis* and *P. montagui*) occur in the Northern shrimp fishery that takes place in the Davis Strait and eastern Hudson Strait. The Total Allowable Catch (TAC) for each species is set for two distinct stock assessment zones, the Western Assessment Zone (WAZ) and the Eastern Assessment Zone (EAZ) (see Map). The TAC is further distributed into management units within these zones.

The fishery in these areas operates April 1 – March 31. Harvesting activity typically commences in May to June, subject to ice conditions.

Where this fishery occurs within and adjacent to the Nunavut Settlement Area (NSA) and Nunavik Marine Region (NMR), decisions and recommendations on TAC and harvest levels for each species are requested annually from the Nunavut Wildlife Management Board (NWMB) and the Nunavik Marine Region Wildlife Board (NMRWB) (the Boards).

This briefing note is intended as a placeholder to which an addendum will provide the necessary science information and advice to support Board decision making, as soon as it becomes available. A meeting of the Northern Shrimp Advisory Committee will occur on March 9, 2021 where stakeholders will discuss TAC options for both species in the EAZ (WAZ not discussed).

Science Advice

Fisheries and Oceans Canada's (DFO) Science sector conducts full stock assessments of *P. borealis* and *P. montagui* on a two-year cycle with updates in interim years. A full assessment using 2020 survey data is scheduled in late February, 2021. Due to this timing, peer-reviewed science advice was not available at the time of this submission and will be provided to the Boards for their March consultations once the assessment has concluded.

Summary of Request

An addendum to this briefing note will be submitted in the coming weeks to provide the necessary science information to support Board decision making. Recognizing that fishing may begin in the WAZ and EAZ as early as May, advice on the following matters is requested as soon as possible:

Western Assessment Zone:

1. Decisions on harvest levels for *P. borealis* and *P. montagui* in the NU W (within the NSA) and NK W (within the NMR) management units, respectively.
2. Recommendations on the overall TAC for *P. borealis* and *P. montagui* in the WAZ.

Table 1. Summary of requested decisions and recommendations, WAZ.

Area (Management Unit)	<i>P. borealis</i>	<i>P. montagui</i>
NSA (NU W)	Harvest level decision NWMB	Harvest level decision NWMB
NMR (NK W)	Harvest level decision NMRWB	Harvest level decision NMRWB
<i>TOTAL (WAZ)</i>	<i>TAC recommendation (combined total of decisions) NWMB and NMRWB</i>	<i>TAC recommendation (combined total of decisions) NWMB and NMRWB</i>

Eastern Assessment Zone:

1. Decisions on harvest levels for *P. borealis* and *P. montagui* in the NU E (within the NSA) and NK E (within the NMR) management units, respectively.
2. Recommendations on the distribution and allocation of the TAC for *P. borealis* within the Davis Strait management units (DS W, DS E).
3. Recommendations on the overall TAC for *P. borealis* and *P. montagui* in the EAZ, respectively.

Table 2. Summary of requested decisions and recommendations, EAZ.

Area (Management Unit)	<i>P. borealis</i>	<i>P. montagui</i>
NSA (NU E)	Harvest level decision NWMB	Harvest level decision NWMB
NMR (NK E)	Harvest level decision NMRWB	Harvest level decision NMRWB
DS E	TAC distribution and allocation recommendation NWMB	
DS W	TAC distribution and allocation recommendation NWMB & NMRWB	
<i>TOTAL (EAZ)</i>	<i>TAC Recommendation NWMB & NMRWB</i>	<i>TAC Recommendation NWMB & NMRWB</i>

Management Measures:

1. Recommendation to continue the practice whereby *P. borealis* and *P. montagui* allocations in NU W and NK W may be harvested in either management unit, regardless of land claim boundaries.

Similarly, recommendation to continue the practice whereby *P. borealis* and *P. montagui* allocations in NU E and NK E may be harvested in either management unit, regardless of land claim boundaries.

Prepared by: Courtney D'Aoust, Fisheries Resource Management, Fisheries and Oceans Canada

Date: February 4, 2021