

SUBMISSION TO THE
NUNAVUT WILDLIFE MANAGEMENT BOARD
FOR

Information:

Decision: X

Issue: Proposed Changes for Shrimp Fishery Management in the North for Northern (*Pandalus borealis*) and Striped (*Pandalus montagui*) Shrimp

Currently, shrimp fishery management in the north is complicated with many overlapping management units and quotas for both shrimp species (Figures 1 and 2). Of particular note, the *P. montagui* fishery takes place in Shrimp Fishing Areas 2, 3 and 4 west of 63°W which includes parts of the Nunavut Settlement Area (NSA), the Nunavut Marine Region (NMR) and the Labrador Inuit Settlement Area (LISA). All existing quotas for this species can be taken in the Resolution Island area resulting in a potential exploitation (i.e. harvest) rate of 47%, a rate over three times higher than that applied for healthy shrimp stocks in the rest of eastern Canada. In 2010 DFO Science recommended the quotas be reduced since such a potential exploitation rate posed a high risk for stock decline. Additionally, industry has encountered difficulties in pursuing Marine Stewardship Council (MSC) certification of the offshore shrimp fisheries in this area due to overlapping management units and quotas of the *P. montagui* fishery and high potential exploitation rate which do not meet the standards for sustainable fishing.

As a result, stakeholders including Nunavut industry representatives and staff from the Nunavut Wildlife Management Board (NWMB), the Government of Nunavut (GN) and Nunavut Tunngavik Inc. (NTI) as well as Nunavut interests have convened over the past several months to consider options to address these issues. At the latest face to face meeting in November 2010, a new shrimp fishery management regime was proposed and supported in principle by all stakeholders. Existing quotas were kept the same as much as possible and new/increased quotas were introduced in Hudson Strait. There was consensus to have DFO further develop the proposal and submit the proposal to co-management boards and the Northern Shrimp Advisory Committee for recommendations/decision.

Under this proposal, overlapping management units would be eliminated for both *P. montagui* and *P. borealis* by aligning Shrimp Fishing Area (SFA) boundaries with settlement area boundaries and creating new management units within these SFAs (Figures 3 and 4). Each management unit would have only one quota for each species. To address conservation concerns of potential over harvest, the combined *P. montagui* Total Allowable Catch (TAC) of 6,300t (as shown in Figure 2) would be reduced to 2,250t based on a precautionary exploitation rate of 15%. This is a drop from the current potential exploitation rate

of 47%. Implementation of these and other changes would make shrimp fishery management in the north more straight forward, provide sustainable TACs and also support MSC certification which benefits all stakeholders. To be noted, to reach a sustainable exploitation rate, the offshore fleet is willing to change their directed *P. montagui* quota outside the NSA (DS –W) to a bycatch quota and reduce their harvest from a directed 3,300t quota to a 1,100t by catch quota.

The following tables summarize the proposed changes to Nunavut and Nunavik quotas within their land claim settlement areas under the proposal and based on 2010 Science advice:

Table 1. Current and proposed quotas for *Pandalus borealis* within the Nunavut and Nunavik settlement areas by sector and management unit.

Sector	Current Regime			Proposed Regime				
	Quota(t) by Management Unit			Quota(t) by Management Unit				
	SFA3	SFA2 W of 63°W	Total	Nunavut- West (NU-W)	Nunavik- West (NK-W)	Nunavut- East (NU-E)	Nunavik- East) NK-E	Total
Nunavut	400 ¹		400	1500 ²		250 ²		1750
Nunavik								
¹ 400t bycatch allowed in SFA3 and SFA2 inside the NSA when fishing for <i>P. montagui</i>				² Split to be determined.				

Table 2. Current and proposed quotas for *P. montagui* within the Nunavut and Nunavik settlement areas by sector and management unit.

Sector	Current Regime				Proposed Regime				
	Quota(t) by Management Unit				Quota(t) by Management Unit				
	2,3,4 W of 63°W	SFA3	SFA2 inside the NSA	Total	NU-W	NK-W	NU-E	NK-E	Total
Nunavut	0	1000 ¹		3000	5000 ²		1150 ²		6150 ²
		2000							
Nunavik	0	0	0	0					
¹ 1000t allowed in SFA3 and SFA2 inside the NSA of which a maximum of 500t can be fished in SFA2					² Split to be determined.				

In Davis Strait-East (DS-E) (i.e. old SFA2EX) quotas would remain unchanged.

As noted in the above tables, a sharing arrangement between Nunavut and Nunavik for the available quotas in Hudson Strait is required. DFO recognizes sharing arrangements are best negotiated between NTI and Makivik. However, to address immediate conservation and management concerns as well as expedite implementation of the proposal, an interim one year allocation plan is recommended while discussions ensue between NTI and Makivik. This one year

interim plan would allow fishing operations to continue unimpeded for this season but is not intended to affect future sharing arrangements.

DFO suggests the following interim allocation plan for the 2011/12 season:

Table 3. Proposed interim quotas within Nunavut and Nunavik settlement areas by species and management unit.

Species	Quota(t) by Management Unit			
	Nunavut-West	Nunavik-West	Nunavut-East	Nunavik-East
<i>P. montagui</i>	2000	3000	1150	0
<i>P. borealis</i>	625	875	250*	0

*A bycatch protocol will be developed in consultation with affected stakeholders however, for the interim allocation period 2011/12, the bycatch quotas in Nunavut-East (250t *P. borealis*) and Davis Strait-West (1,100t *P. montagui*) will operate as fixed amounts.

Total proposed quotas per species within Hudson Strait are compared with the existing quotas in the following table:

Table 4. Current versus proposed interim quotas for each species within Hudson Strait by land claim settlement area.

Species	Total Current Quota(t)		Total Proposed Interim Quota(t)	
	Nunavut	Nunavik	Nunavut	Nunavik
<i>P. montagui</i>	3000	0	3150	3000
<i>P. borealis</i>	0	0	875	875

A quota sharing arrangement between Nunavut and Nunavik is an important part of the shrimp fishery management regime. DFO encourages NTI and Makivik to seek a timely resolution.

In summary, DFO is seeking the Board's decision on the proposed Shrimp Fishing Areas and management unit boundary changes and the associated quotas within the NSA as well as the Board's recommendations on the proposed management changes in Davis Strait-West outside the NSA (i.e. boundary and quota change from 3300t directed to 1100t by catch). DFO is also seeking the Board's decision on the interim allocation plan for the 2011/12 season. Given the timing of the opening of the fishery a response as soon as possible would be appreciated.

Prepared by: Resource Management, Fisheries and Oceans Canada
Central & Arctic and National Capital Regions

Date: February 23, 2011

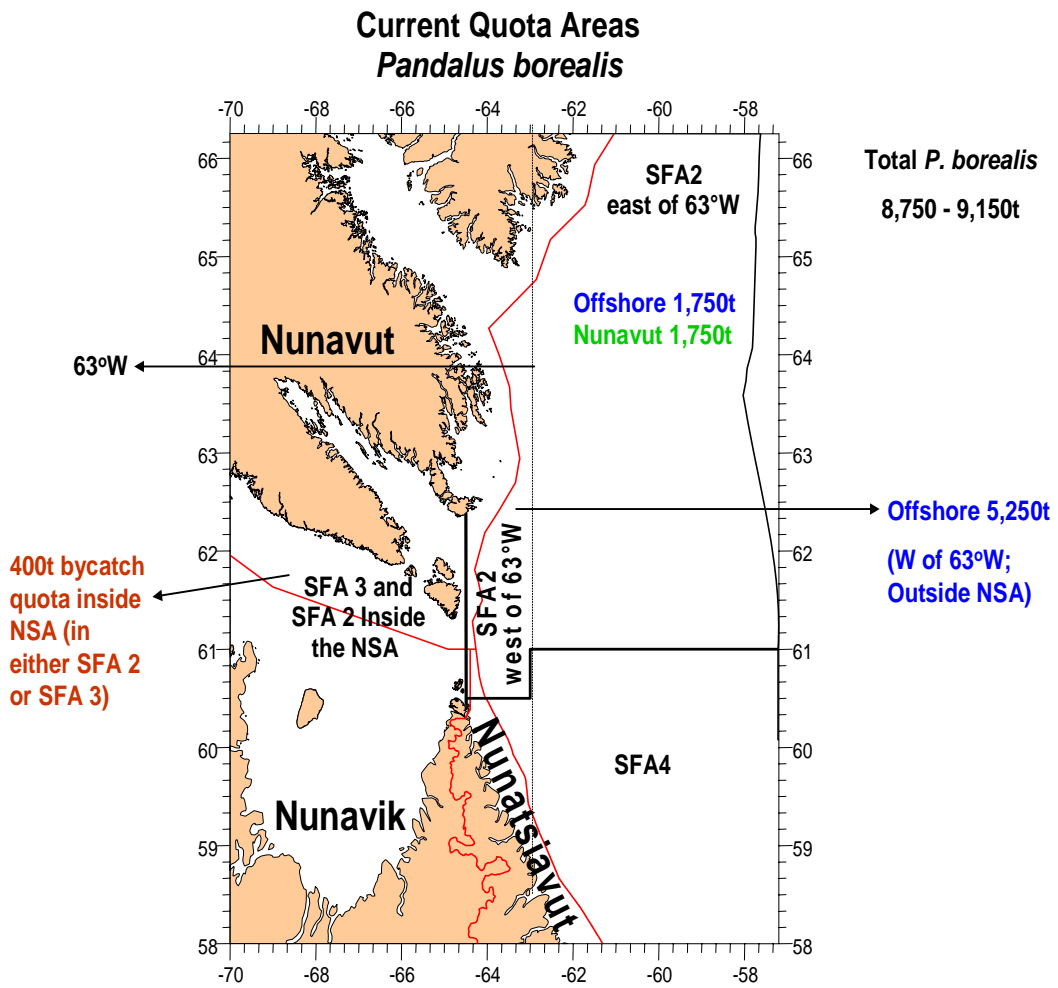


Figure 1. Current Quota Areas for *Pandalus borealis*.

**Current Quota Areas
*Pandalus montagui***

Total *P. montagui*

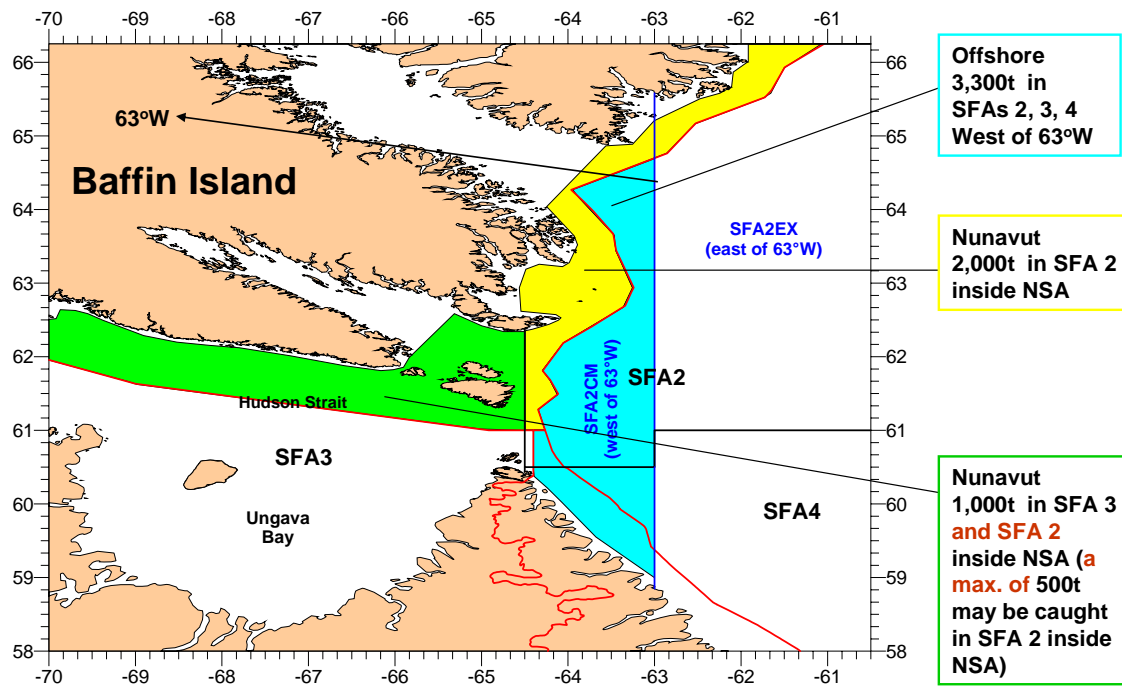


Figure 2. Current Quota Areas for *Pandalus montagui*.

Proposed Shrimp Fishing Areas

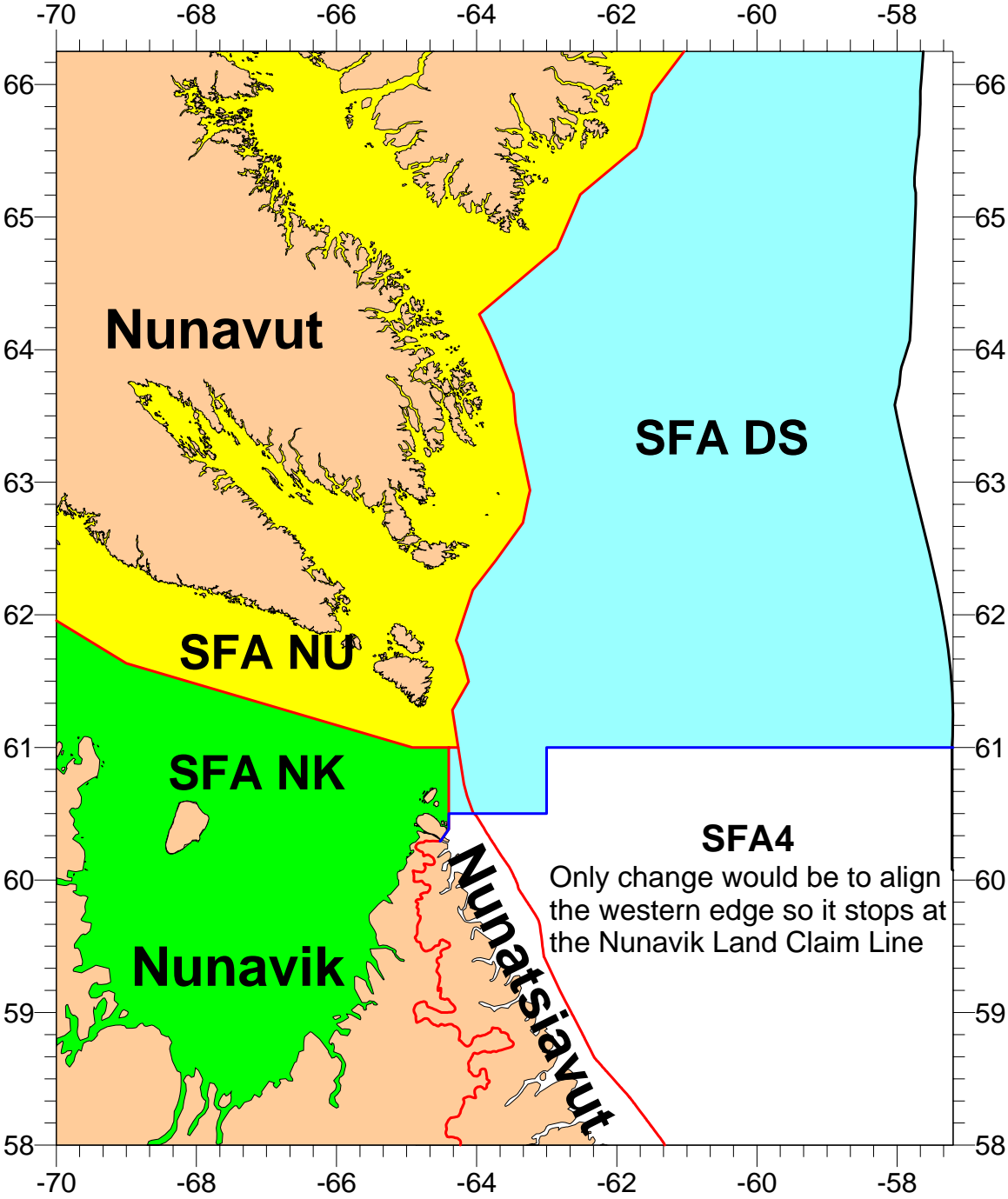


Figure 3. Proposed Shrimp Fishing Areas.

Proposed Management Units within the New SFAs

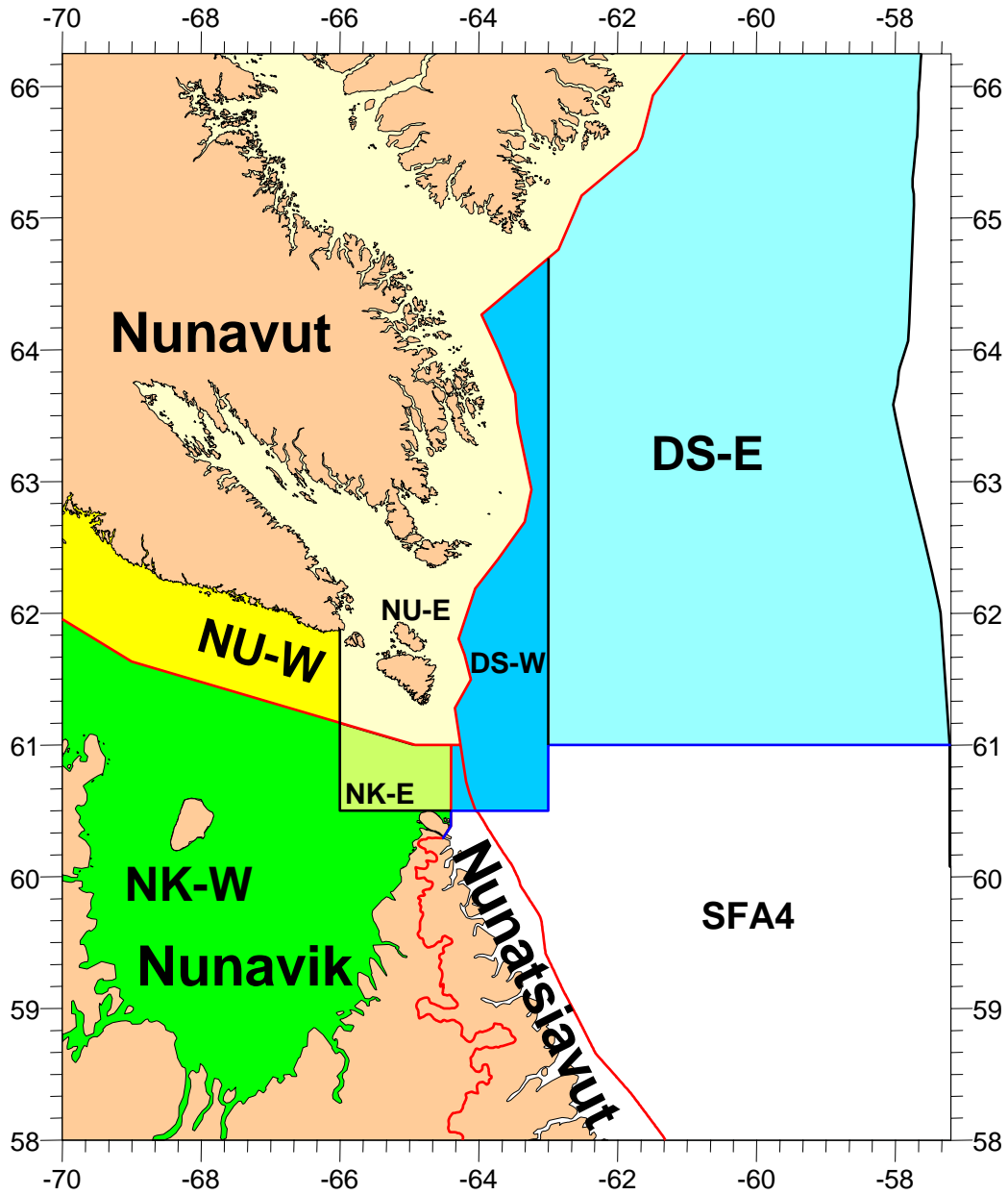


Figure 4. Proposed Management Units within the New SFAs.