

ᑕᑦᑯᑦᑲᑦ 1: ᑎᑦᑲᑦᑲᑦ ᑎᑦᑲᑦᑲᑦ ᑎᑦᑲᑦᑲᑦ.

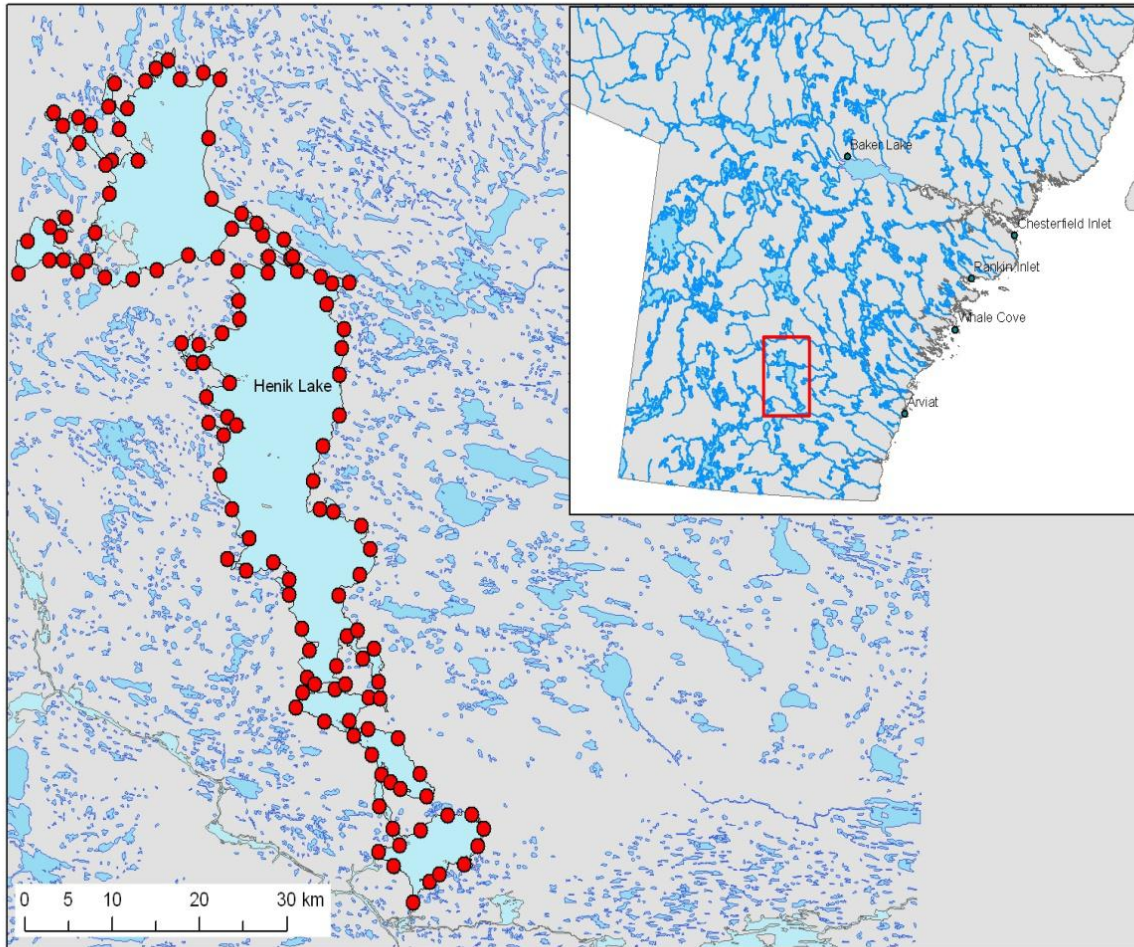


Figure 1: Locations of 125 proposed scratching posts around Henik Lake.

ክፍል ለመጠቀም ጋራ ጥራት ለማረጋገጥ ይጠቀሳል። ለዚህ ምክርቤት ለማረጋገጥ ለሌሎች ጋራ ጥራት ለማረጋገጥ ይጠቀሳል።

ጠቅላይ ልማት ሚኒስቴር/ጠቅላይ ሚኒስትር: ለዚህ ምክርቤት ለማረጋገጥ ለሌሎች ጋራ ጥራት ለማረጋገጥ ይጠቀሳል። ለዚህ ምክርቤት ለማረጋገጥ ለሌሎች ጋራ ጥራት ለማረጋገጥ ይጠቀሳል።

ቅጥር:

ጠቅላይ ልማት ሚኒስቴር ለዚህ ምክርቤት ለማረጋገጥ ለሌሎች ጋራ ጥራት ለማረጋገጥ ይጠቀሳል። ለዚህ ምክርቤት ለማረጋገጥ ለሌሎች ጋራ ጥራት ለማረጋገጥ ይጠቀሳል።

የጠቅላይ ልማት ሚኒስቴር: ለዚህ ምክርቤት ለማረጋገጥ ለሌሎች ጋራ ጥራት ለማረጋገጥ ይጠቀሳል።

ጠቅላይ ሚኒስትር: ለዚህ ምክርቤት ለማረጋገጥ ለሌሎች ጋራ ጥራት ለማረጋገጥ ይጠቀሳል።

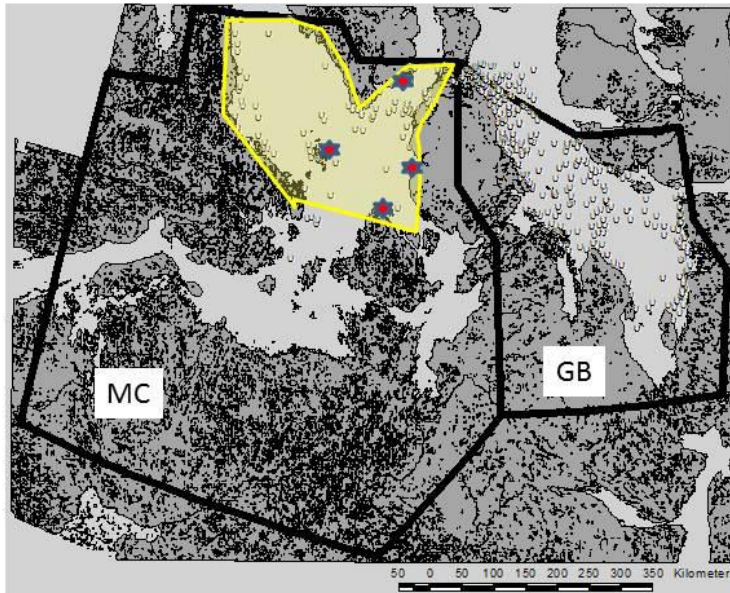


Figure 2. General Area of proposed non-invasive sampling of the M'Clintock Channel management unit (MC) shown as yellow polygon. The white dots on the map refer to locations of polar bear captures during 1998-2000 GN aerial mark recapture survey. The area of our proposed survey includes most of the bear capture locations in the 1998-2000 survey in MC. The red stars indicate locations of Research Cabins and camps.