

SUBMISSION TO THE
NUNAVUT WILDLIFE MANAGEMENT BOARD AND NUNAVIK MARINE
REGION WILDLIFE BOARD
FOR

Information:

Decision: X

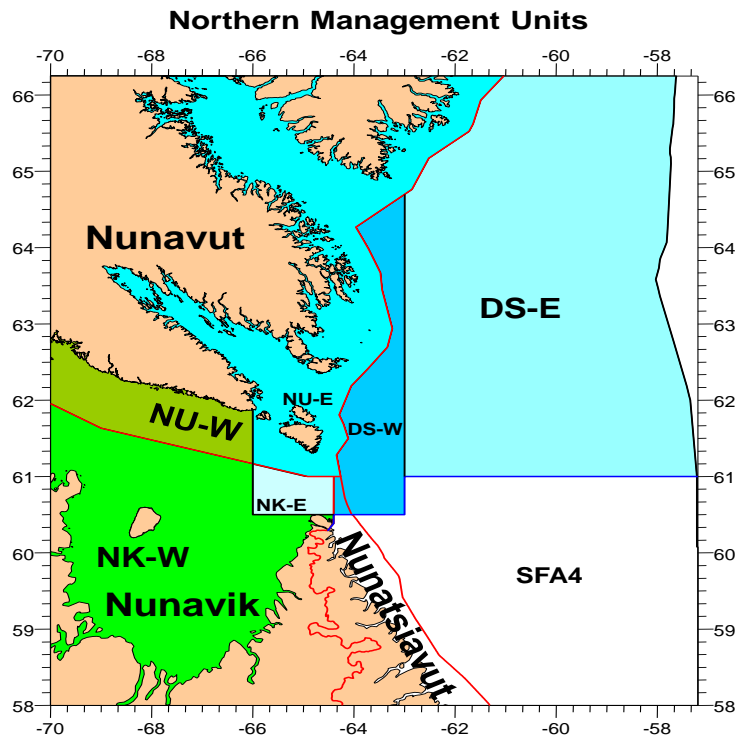
Recommendation: X

Issue: Extension of Season Bridging for Nunavut and Nunavik allocations in the Northern shrimp fishery

Map:

Blue areas – Eastern Assessment Zone

Green areas – Western Assessment Zone



Northern shrimp (*Pandalus borealis*)



Striped shrimp (*Pandalus montagui*)

Background

Two shrimp species (*Pandalus montagui* and *Pandalus borealis*) occur in the Northern shrimp fishery that takes place in the Davis Strait and eastern Hudson Strait, which includes parts of the Nunavut Settlement Area (NSA) and the Nunavik Marine Region (NMR). Total Allowable Catch (TAC) for each species is set for two distinct science assessment zones, the Western Assessment Zone (WAZ) and Eastern Assessment Zone (EAZ) (see Map).

Collectively, season bridging refers to 1) borrowing from the following year's quota to be fished in the last month of the current year; and 2) the ability to carry forward some of the current year's unused quota to be caught in the following year.

In 2018, the Nunavut Wildlife Management Board and the Nunavik Marine Region Wildlife Board (the Boards) approved a two year pilot project for season bridging of Nunavut and Nunavik *P. montagui* allocations in the WAZ and *P. borealis* allocations in Davis Strait. The pilot project for Nunavut and Nunavik allocations was developed to be as consistent as possible with the season bridging protocol for the offshore fleet. Specifics of this season bridging protocol as it relates to amounts eligible for borrowing or carry forward are available at Appendix 1 – Table 1.

The original pilot project indicated that amounts available for bridging could be reduced or suspended where the stock status is no longer in the Healthy Zone of the PA Framework. Of note, the offshore fleet has recently reduced carry forward amounts to a maximum of 17% of the previous year's allocation in the Cautious Zone and suspended carry forwards in the Critical Zone.

The Department intends to establish limit reference points and upper stock reference points as part of the Precautionary Approach (PA) framework for stocks in the WAZ by 2021, and for southern Shrimp Fishing Areas 4-6 by 2023. The Department intends to formalize season bridging protocols for all eligible allocations, including those of Nunavut and Nunavik, in Harvest Control Rules (HCRs) which are a component of the PA framework.

Subject to the Minister's decision to remove the bycatch designation for *P. borealis* quota in the Nunavut / Nunavik East (NU/NK E) management units, these allocations could be eligible for season bridging in 2021/22 (season bridging in the EAZ is currently limited to the Davis Strait management units).

The two-year season bridging pilot project expired March 31, 2020. The Department is now seeking the Boards' decisions and recommendation, as appropriate, on renewed season bridging protocols for Nunavut and Nunavik allocations within the settlement areas and in Davis Strait beginning in the 2021/22 season.

Consultations

The department sought the views of relevant stakeholders and Nunavut and Nunavik industry in April 2020. A list of recipients and a summary of views is at Appendix 2.

Makivik Corporation supported extension of the season bridging protocol with additions as recommended by the Department, outlined below. Members of the Nunavut Fisheries Association also supported extension of the season bridging protocol with recommended additions, but for one year only.

Science Considerations

While catches will not exceed the TACs for the bridged fishing seasons, collectively, season bridging will result in an increased exploitation rate, especially if carry forward and borrowed quota is fished in the same year.

For example, in the 2020/21 season, the exploitation rate as a result of season bridging would increase by no more than 2.1% in the WAZ, and 0.64% in the EAZ. Any increase in the exploitation rate, to the extent that season bridging is fully used by industry, would therefore be minimal.

Given that *P. borealis* is the healthy zone of the PA Framework, DFO Science does not foresee negative consequences to the stock. Where there is no PA framework for *P. montagui* in the WAZ, the stock status is uncertain.

Recommendations

DFO recommends that, beginning in the 2021/22 fishery and until such a time as HCRs are developed for the WAZ and/or southern SFAs, to maintain the existing season bridging protocols for Nunavut and Nunavik allocations within the WAZ and in the Davis Strait, with two additions:

- *Subject to the Minister's decision to remove the bycatch designation:* allow season bridging of *P. borealis* allocations in the NU/NK E; and
- In the EAZ where there is currently an established PA framework, reduce or suspend carry forward amounts where the *P. borealis* stock is no longer in the Healthy Zone, such that:
 - If the stock is in the Cautious Zone, original carry forward amounts are reduced by 13% and 26% in the upper- and lower-half of the Cautious Zone, respectively.
 - If the stock is in the Critical Zone, no carry forward is permitted.

These recommended additions to the existing season bridging protocol are illustrated at Appendix 1.

Summary of Request

The Department is seeking from the Boards, for implementation beginning in the 2021/22 until such a time as HCRs are developed for the WAZ and southern SFAs:

- 1) A decision to maintain the existing season bridging protocols for *P. montagui* allocations in the WAZ, and a recommendation to maintain the existing season bridging protocols for *P. borealis* allocations in Davis Strait.
- 2) *Subject to the Minister's decision to remove the bycatch designation:* A decision to allow season bridging of *P. borealis* allocations in the NU/NK E management units.
- 3) In the EAZ, a decision within the settlement areas, and a recommendation outside, to reduce or suspend carry forward amounts for *P. borealis* where the stock is no longer in the Healthy Zone, as described above.

Applicable to the 2020/21 fishing season only: the Boards could agree that the Department could allow extra time, if deemed necessary and appropriate, for quota carried forward from 2019/20 to be caught in the WAZ after the September 30, 2020 deadline. This is in consideration of the ongoing COVID-19 situation and potential impacts on industry's ability to fish within the allotted timeframe.

Prepared by: Fisheries Resource Management, Fisheries and Oceans Canada

Date: May 8, 2020

Appendices

Appendix 1- Season Bridging Protocol for NU and NK Allocations in the WAZ and EAZ

Appendix 2- Consultation Summary and Recipients List (April 2020)

Season Bridging Protocol for NU and NK Allocations in the WAZ and EAZ

Carry Forward

WAZ (*P. montagui*)

The Department will make 800t available in the WAZ for carry forward to Nunavut and Nunavik allocation holders annually; sharing of this amount will be consistent with the sharing arrangement established by the Boards.

Currently, based on the 50/50 split, Nunavut and Nunavik will each be able to bridge a total of 400t each. Any carry forward quota not caught by September 30 of the following year will remain unfished.

EAZ - Davis Strait, NU/NK E¹ (*P. borealis*)

350t will be available for carry forward for Nunavut and 20t for Nunavik allocations, to be fished by July 31 of the following year. Quota that is not caught by this date will remain unfished.

Where the *P. borealis* stock is no longer in the Healthy Zone, carry forward amounts are reduced such that:

- If the stock is in the Cautious Zone, original carry forward amounts for Nunavut and Nunavik allocations are reduced by 13% and 26% in the upper- and lower-half of the Cautious Zone, respectively.
- If the stock is in the Critical Zone, no carry forward is permitted.

Borrowing

WAZ (*P. montagui*)

Nunavut and Nunavik shall share a total of 550t annually for borrowing based on sharing arrangements established by the Boards, which is currently 275t each. Requests to borrow quota will be assessed by the Department on a case by case basis in consideration of ice and climate conditions.

EAZ - Davis Strait, NU/NK E² (*P. borealis*)

Nunavut and Nunavik entities shall be allowed to borrow a total of 225t and 10t respectively from their following year's allocations, to be fished in the last month (March) of the current fishery.

¹ Subject to the Minister's decision to remove the bycatch designation for *P. Borealis* in NU/NK E.

² Subject to the Minister's decision to remove the bycatch designation for *P. Borealis* in NU/NK E.

Table 1. Nunavut and Nunavik allocations available for carry forward and borrow.

Area	Nunavik		Nunavut	
	Carry forward	Borrow	Carry forward	Borrow
WAZ <i>P. montagui</i>	400t	275t	400t	275t
WAZ <i>P. borealis</i>	<i>N/A – Bycatch</i>			
EAZ <i>P. montagui</i>	<i>N/A – Bycatch</i>			
EAZ <i>P. borealis</i> (Davis Strait, NU/NK E ³)	20t	10t	350t	225t

³ Subject to the Minister's decision to remove the bycatch designation for *P. Borealis* in NU/NK E.

Consultation Summary and Recipients List (April 2020)

The Department solicited via email industry's views to:

- Maintain the existing season bridging protocols for *P. montagui* allocations in the WAZ, and *P. borealis* allocations in Davis Strait;
- Reduce or suspend carry forward amounts in the EAZ where the *P. borealis* stock is no longer in the Healthy Zone, such that;
 - If the stock is in the Cautious Zone, original carry forward amounts are reduced by 13% and 26% in the upper- and lower-half of the Cautious Zone, respectively.
 - If the stock is in the Critical Zone, no carry forward is permitted.
- Allow season bridging of *P. Borealis* allocations in the NU/NK E management units.

Recipients:

Amber Giles – Nunavut Wildlife Management Board
Frankie Jean-Gagnon – Nunavik Marine Region Wildlife Board

Jerry Ward - Qikiqtaaluk Corporation
Chris Flanagan – Baffin Fisheries Coalition
Brian Burke – Nunavut Fisheries Association
Brian McNamara – Newfound Resources Ltd.
Peter Rose, Tony Wright – Makivik Corporation

Summary of views

Views were received from Makivik Corporation and Nunavut Fisheries Association (NFA).

Makivik Corporation supported extension of the existing season bridging protocol with recommended additions, as outlined by the Department in this briefing note.

Members of NFA also supported extension of the existing season bridging protocol with additions outlined herein, for one year only. NFA called for further discussion and analysis before setting season bridging amounts for the long term. Further, NFA viewed the deadline for carry forward catches to be limiting given the challenges associated with ice conditions and weather in these areas.