



ᖃᓂᓂᓂ ᖅᓂᓂ ᖃᓂᓂᓂ ᖅᓂᓂ  
 Building Nunavut Together  
 Nunavutliuqatigiingniq  
 Bâtir le Nunavut ensemble

ᐃᓚᓂᓂᓂᓂᓂ  
 Department of Environment  
 Avatiliqiyikkut  
 Ministère de l'Environnement

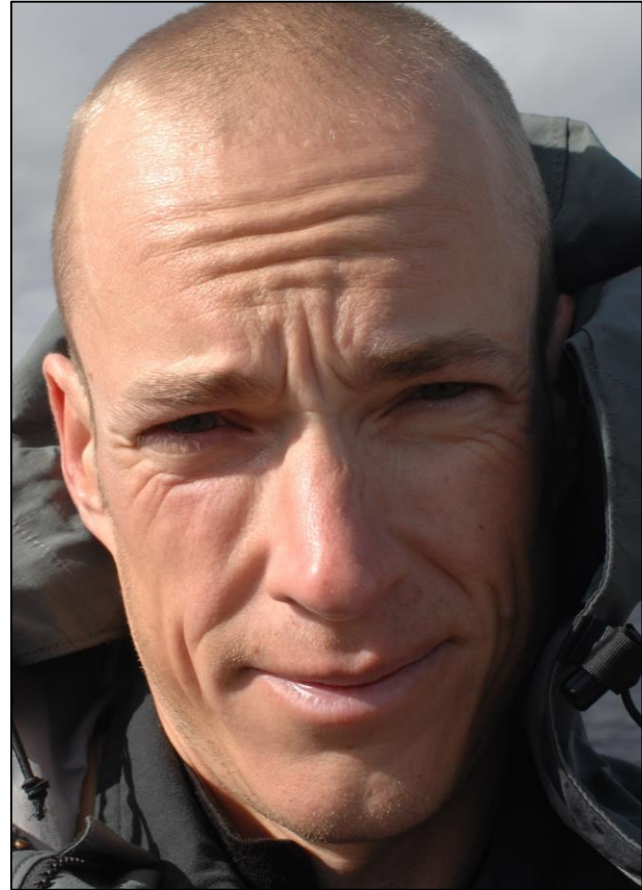
# ᖃᓂᓂᓂ ᖅᓂᓂ ᖃᓂᓂᓂ ᖅᓂᓂ ᖃᓂᓂᓂ ᖅᓂᓂ ᖅᓂᓂ ᖃᓂᓂᓂᓂᓂᓂ ᖅᓂᓂᓂᓂᓂᓂ 2021



# ለጥቅም



ገረገሪ ገረገሪ  
ደብዳቤ ገረገሪ  
ገረገሪ ገረገሪ  
ገረገሪ ገረገሪ



ገረገሪ ገረገሪ  
ደብዳቤ ገረገሪ  
ገረገሪ ገረገሪ  
ገረገሪ ገረገሪ

• ᑕᐃᐅᓴᓂᑕ 2021-ᑦᑕ ᐃᓯᐃᓴᓂᓴᓂᓯᐅᓯᑦ ᐃᓴᑎᑕᓂᓴᓂᓄᓂᑕ ᓄᓄᓴᓯ ᓂᓴᐅᓂᓄᓂᑕ

- ᐃᓂᓯᓂᓴᓂᓴᓂᓄᓂᑕ ᓄᓄᓯᓄᑕ ᐃᐅᐅᓯᑕᓂᓴᓂ ᐅᓴᓂᓴ ᑕᐃᓂ ᐱᓂᓯᓴᓂᐃᓯᓂᓴᓂᑦ
- ᐅᓴᓂᓴ ᓄᓄᓯᓄᑕ ᐃᐅᐅᓯᑕᓂᓴᓂᑕ ᓄᓴᓂᓴᓂᓴᓂᓄᓂᑕ ᐃᓯᓄᓂ
- ᐅᓴᓂᓴ ᓄᑕᓂᓴ ᓄᓄᓯᓄᑕ ᐃᐅᐅᓯᑕᓂᓴᓂᑕ ᓂᓯᓯᓯᑦ ᑕᓄᓴᓂᓯᓴᓂᑦ



# ᑖᓄᐃᑦᑕᓂᑦ



- ᑖᓄᐃᑦᑕᓂᑦ ᑖᓄᐃᑦᑕᓂᑦ
- 2021 ᓄᓄᑦᑕᓂᑦ ᑖᓄᐃᑦᑕᓂᑦ ᑖᓄᐃᑦᑕᓂᑦ
- ᑖᓄᐃᑦᑕᓂᑦ ᑖᓄᐃᑦᑕᓂᑦ ᑖᓄᐃᑦᑕᓂᑦ ᑖᓄᐃᑦᑕᓂᑦ
- ᑖᓄᐃᑦᑕᓂᑦ ᑖᓄᐃᑦᑕᓂᑦ ᑖᓄᐃᑦᑕᓂᑦ ᑖᓄᐃᑦᑕᓂᑦ
- ᑖᓄᐃᑦᑕᓂᑦ ᑖᓄᐃᑦᑕᓂᑦ ᑖᓄᐃᑦᑕᓂᑦ ᑖᓄᐃᑦᑕᓂᑦ
- ᑖᓄᐃᑦᑕᓂᑦ ᑖᓄᐃᑦᑕᓂᑦ ᑖᓄᐃᑦᑕᓂᑦ ᑖᓄᐃᑦᑕᓂᑦ

# ᑭᓄᓐᓇᓂᓐ ᓇᓂᓐᓇᓂᓐ ᓇᓂᓐᓇᓂᓐ



1. ᓂᓇᓂᓐᓇᓂᓐ ᓇᓂᓐᓇᓂᓐ ᓇᓂᓐᓇᓂᓐ



1.



2. ᑭᓄᓂᓄᓂ ᑭᓄᓂᓄᓂ ᑭᓄᓂᓄᓂ ᑭᓄᓂᓄᓂ ᑭᓄᓂᓄᓂ ᑭᓄᓂᓄᓂ ᑭᓄᓂᓄᓂ ᑭᓄᓂᓄᓂ



1.





# ᑭᓄᓐᓇᓂᓐ ᑭᓄᓐᓇᓂᓐ ᑭᓄᓐᓇᓂᓐ



1.



## 4. ᑭᓄᓐᓇᓂᓐ ᑭᓄᓐᓇᓂᓐ ᑭᓄᓐᓇᓂᓐ





# ᑎᓄᓇ ᓄᓇᓇ ᓄᓇᓇ ᓄᓇᓇ ᓄᓇᓇ ᓄᓇᓇ



$8x + 5^2 = 5^2$



1.

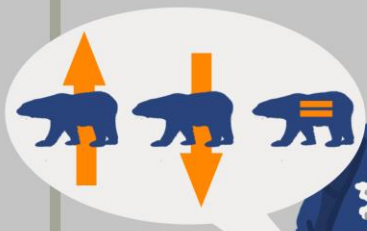
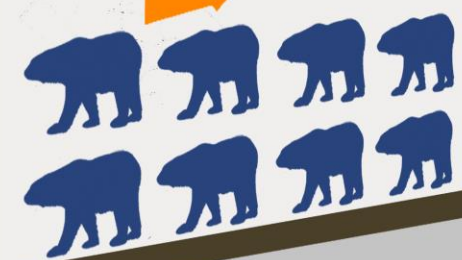
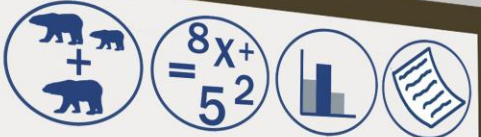
4.



5. ᓄᓇᓇ ᓄᓇᓇ ᓄᓇᓇ ᓄᓇᓇ ᓄᓇᓇ ᓄᓇᓇ



ᑲᑲᑦᑲᑦ ᑲᑲᑦᑲᑦ ᐸᑦᑲᑦ ᐸᑦᑲᑦ ᐸᑦᑲᑦ ᐸᑦᑲᑦ

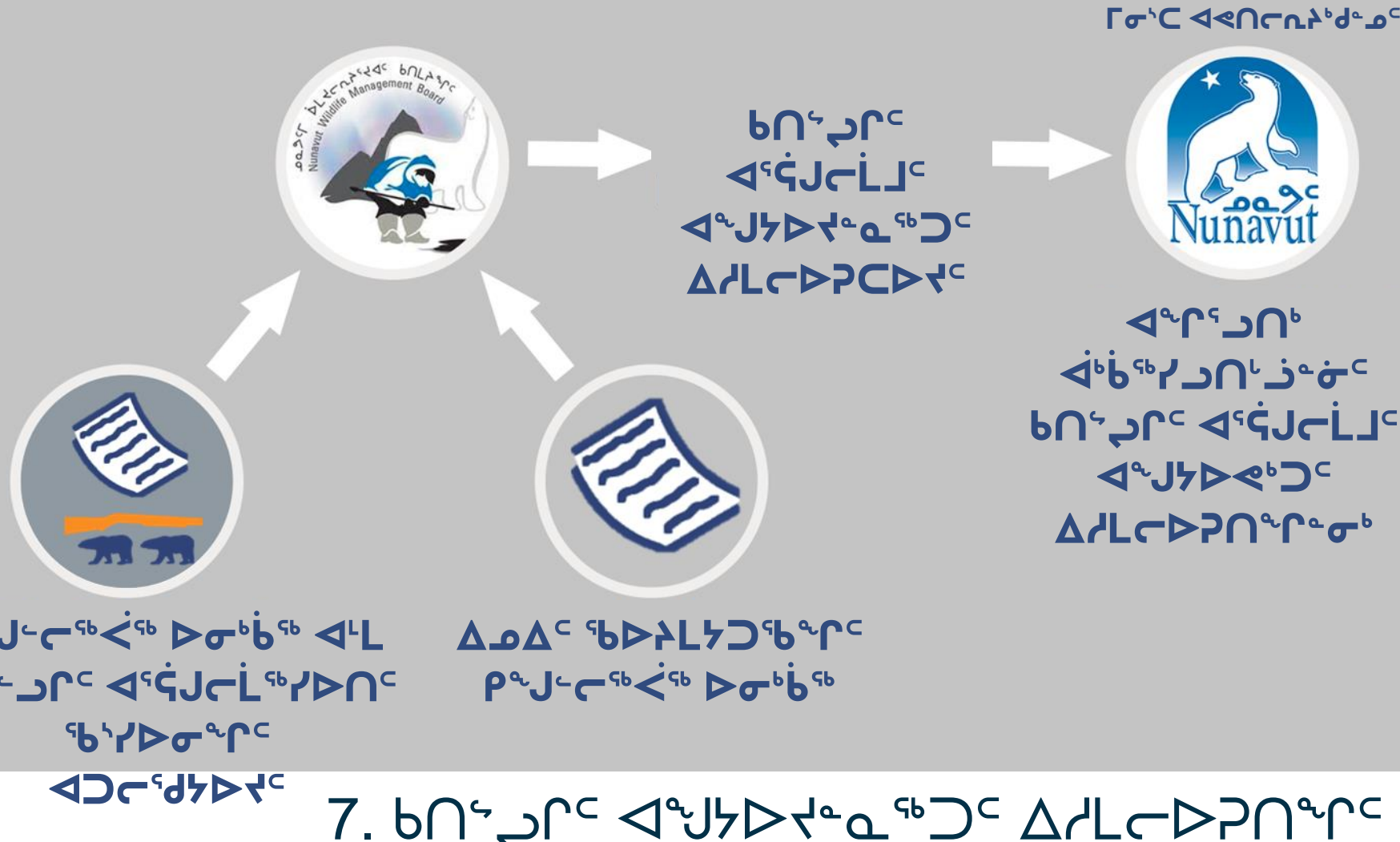


1.

4.



# ᑉᑲᑲᑦ ᐅᐱᐱᐅᐅᑦ ᑉᑲᑲᑦ ᐅᐱᐱᐅᐅᑦ ᑉᑲᑲᑦ



ᑉᑲᑲᑦ ᐅᐱᐱᐅᐅᑦ ᑉᑲᑲᑦ ᐅᐱᐱᐅᐅᑦ ᑉᑲᑲᑦ  
ᑉᑲᑲᑦ ᐅᐱᐱᐅᐅᑦ ᑉᑲᑲᑦ ᐅᐱᐱᐅᐅᑦ ᑉᑲᑲᑦ  
ᑉᑲᑲᑦ ᐅᐱᐱᐅᐅᑦ ᑉᑲᑲᑦ

ᑉᑲᑲᑦ ᐅᐱᐱᐅᐅᑦ ᑉᑲᑲᑦ ᐅᐱᐱᐅᐅᑦ ᑉᑲᑲᑦ  
ᑉᑲᑲᑦ ᐅᐱᐱᐅᐅᑦ ᑉᑲᑲᑦ ᐅᐱᐱᐅᐅᑦ ᑉᑲᑲᑦ

ᑉᑲᑲᑦ ᐅᐱᐱᐅᐅᑦ ᑉᑲᑲᑦ

ᑉᑲᑲᑦ ᐅᐱᐱᐅᐅᑦ ᑉᑲᑲᑦ

ᑉᑲᑲᑦ ᐅᐱᐱᐅᐅᑦ ᑉᑲᑲᑦ

ᑉᑲᑲᑦ ᐅᐱᐱᐅᐅᑦ ᑉᑲᑲᑦ

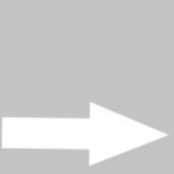
7. ᑉᑲᑲᑦ ᐅᐱᐱᐅᐅᑦ ᑉᑲᑲᑦ ᐅᐱᐱᐅᐅᑦ ᑉᑲᑲᑦ



# ᑭᓄᓐ ᐱᓐᓂᓐ ᐱᓐᓂᓐ ᐱᓐᓂᓐ

ᐱᓐᓂᓐ ᐱᓐᓂᓐ ᐱᓐᓂᓐ

ᐱᓐᓂᓐ ᐱᓐᓂᓐ ᐱᓐᓂᓐ ᐱᓐᓂᓐ



ᐱᓐᓂᓐ ᐱᓐᓂᓐ



ᐱᓐᓂᓐ ᐱᓐᓂᓐ ᐱᓐᓂᓐ  
ᐱᓐᓂᓐ ᐱᓐᓂᓐ  
ᐱᓐᓂᓐ ᐱᓐᓂᓐ  
ᐱᓐᓂᓐ ᐱᓐᓂᓐ

ᐱᓐᓂᓐ ᐱᓐᓂᓐ ᐱᓐᓂᓐ  
ᐱᓐᓂᓐ ᐱᓐᓂᓐ



ᐱᓐᓂᓐ ᐱᓐᓂᓐ  
ᐱᓐᓂᓐ ᐱᓐᓂᓐ

7. ᐱᓐᓂᓐ ᐱᓐᓂᓐ ᐱᓐᓂᓐ ᐱᓐᓂᓐ



# ᑭᓄᓐᓂᓐᓂᓐᓂᓐᓂᓐᓂᓐᓂᓐᓂᓐ



1.



2.



3.



4.



5.



6.

ᑭᓄᓐᓂᓐᓂᓐᓂᓐᓂᓐᓂᓐᓂᓐᓂᓐ

ᑭᓄᓐᓂᓐᓂᓐᓂᓐᓂᓐᓂᓐᓂᓐᓂᓐᓂᓐ

7.





# ᐱᑕᑦᑎᓂᑦ ᐱᑕᑦᑎᓂᑦ

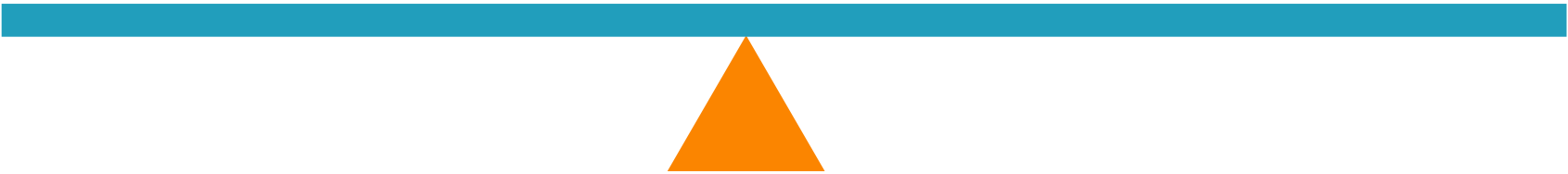
- ᐱᑕᑦᑎᓂᑦ

ᑭᑦᑎᓂᑦ ᐱᑕᑦᑎᓂᑦ

ᓄᓂᑦ ᐱᑕᑦᑎᓂᑦ

ᓄᓂᑦ ᐱᑕᑦᑎᓂᑦ

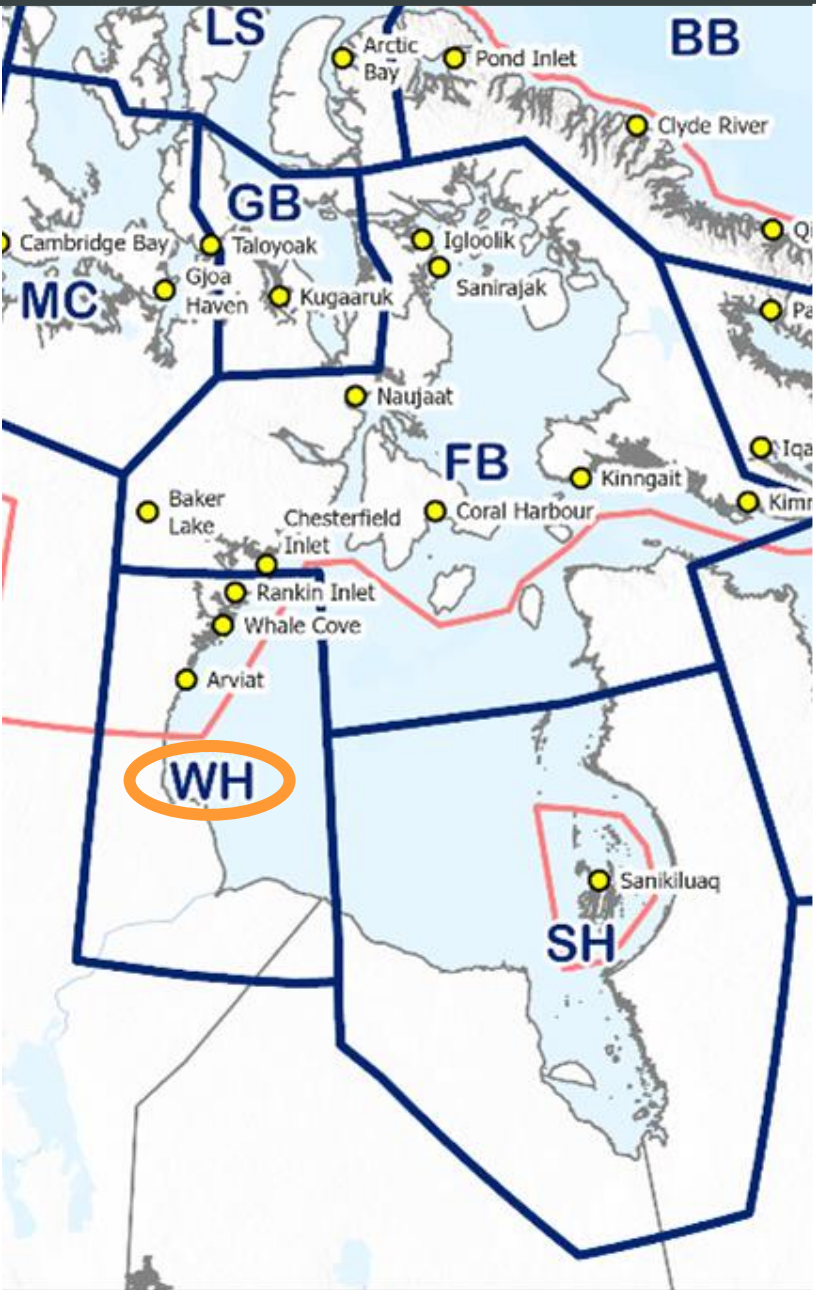
ᓄᓂᑦ ᐱᑕᑦᑎᓂᑦ



## ᑭᑦᑎᓂᑦ ᓄᓂᑦ (TAH)

- ᐱᑕᑦᑎᓂᑦ ᓄᓂᑦ ᐱᑕᑦᑎᓂᑦ ᐱᑕᑦᑎᓂᑦ ᐱᑕᑦᑎᓂᑦ 38 ᓄᓂᑦ ᐱᑕᑦᑎᓂᑦ.
- ᐱᑕᑦᑎᓂᑦ ᐱᑕᑦᑎᓂᑦ ᐱᑕᑦᑎᓂᑦ ᐱᑕᑦᑎᓂᑦ 38-ᓂᑦ.

ᑕᑦᑕᑦᑕᑦᑕᑦᑕ ᑕᑦᑕᑦᑕᑦᑕᑦᑕ ᑕᑦᑕᑦᑕᑦᑕᑦᑕ ᑕᑦᑕᑦᑕᑦᑕᑦᑕ



• ᑕᑦᑕᑦᑕᑦᑕᑦᑕ ᑕᑦᑕᑦᑕᑦᑕᑦᑕ ᑕᑦᑕᑦᑕᑦᑕᑦᑕ ᑕᑦᑕᑦᑕᑦᑕᑦᑕ 2011-ᑦ ᑕᑦᑕᑦᑕ 2016-ᑦ



• ᑕᑦᑕᑦᑕᑦᑕᑦᑕ ᑕᑦᑕᑦᑕᑦᑕᑦᑕ ᑕᑦᑕᑦᑕᑦᑕᑦᑕ ᑕᑦᑕᑦᑕᑦᑕᑦᑕ ᑕᑦᑕᑦᑕᑦᑕᑦᑕ ᑕᑦᑕᑦᑕᑦᑕᑦᑕ ᑕᑦᑕᑦᑕᑦᑕᑦᑕ 1980-ᑦᑕᑦᑕ

• ᑕᑦᑕᑦᑕᑦᑕᑦᑕ ᑕᑦᑕᑦᑕᑦᑕᑦᑕᑦᑕ

• ᑕᑦᑕᑦᑕᑦᑕᑦᑕ ᑕᑦᑕᑦᑕᑦᑕᑦᑕ ᑕᑦᑕᑦᑕᑦᑕᑦᑕ ᑕᑦᑕᑦᑕᑦᑕᑦᑕ ᑕᑦᑕᑦᑕᑦᑕᑦᑕ ᑕᑦᑕᑦᑕᑦᑕᑦᑕ ᑕᑦᑕᑦᑕᑦᑕᑦᑕ

• ᑕᑦᑕᑦᑕᑦᑕᑦᑕ ᑕᑦᑕᑦᑕᑦᑕᑦᑕ ᑕᑦᑕᑦᑕᑦᑕᑦᑕ ᑕᑦᑕᑦᑕᑦᑕᑦᑕ ᑕᑦᑕᑦᑕᑦᑕᑦᑕ



ᑭᑭᑦᑕᑦᑕᑦᑕᑦ ᑭᑭᑦᑕᑦᑕᑦᑕᑦ ᑭᑭᑦᑕᑦᑕᑦᑕᑦ



*WH Polar Bear Aerial Survey 2021*

---

## 2021 AERIAL SURVEY OF THE WESTERN HUDSON BAY POLAR BEAR SUBPOPULATION



### FINAL REPORT

November 16, 2022

Stephen N. Atkinson<sup>1</sup>, John Boulanger<sup>2</sup>, Mitch Campbell<sup>3</sup>, Vicki Trim<sup>4</sup>, Jasmine Ware<sup>5</sup>  
and Amélie Roberto-Charron<sup>6</sup>

Submitted to meet requirements of:  
Wildlife Research Permit WL 2021-0061, Wapusk National Park Research and  
Collection Permit Number WAP-2021-3990

Status Report 2022, Nunavut Department of Environment, Wildlife Research Section,  
Igloolik, NU

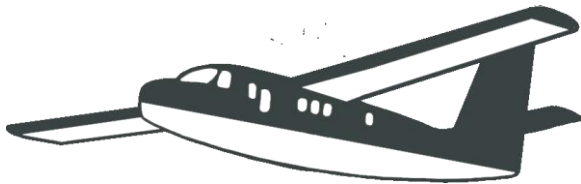
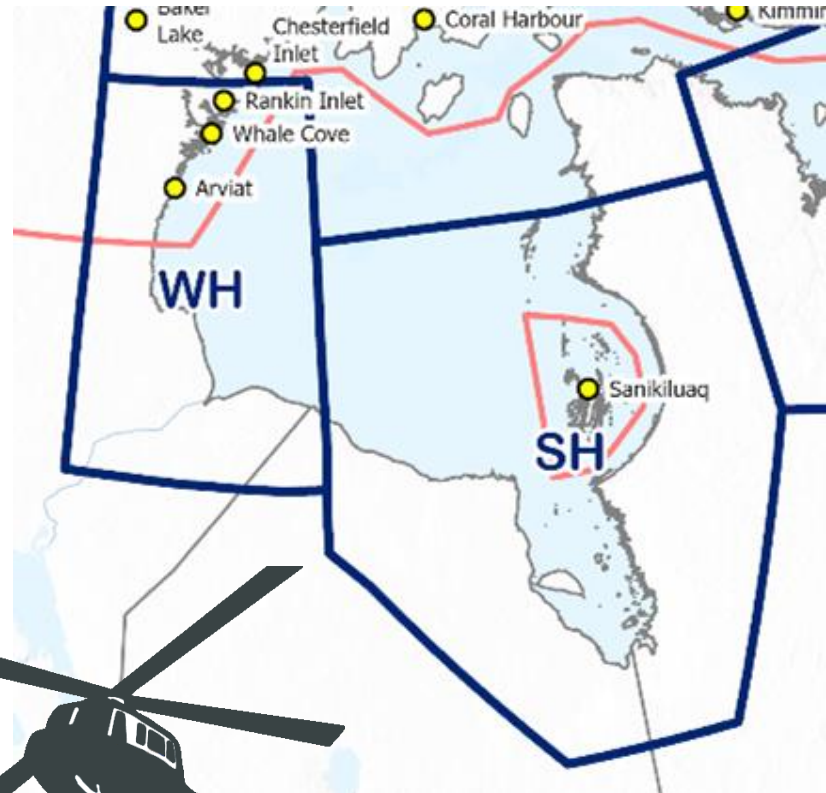






# ᑦᑲᑦᑲᑦᑲᑦᑲᑦ ᑕᑭᑦᑲᑦᑲᑦ ᑕᑭᑦᑲᑦᑲᑦ

- ᑕᑭᑦᑲᑦᑲᑦᑲᑦᑲᑦ 2011-ᑕᑭᑦ, 2016-ᑕᑭᑦ, ᑕᑭᑦᑲᑦᑲᑦᑲᑦ 2021-ᑕᑭᑦ
- ᑕᑭᑦᑲᑦᑲᑦᑲᑦᑲᑦ ᑕᑭᑦᑲᑦᑲᑦᑲᑦ (ᑕᑭᑦᑲᑦ) ᑕᑭᑦᑲᑦᑲᑦᑲᑦ - ᑕᑭᑦᑲᑦᑲᑦᑲᑦ (ᑕᑭᑦᑲᑦ) ᑕᑭᑦᑲᑦᑲᑦᑲᑦᑲᑦ
  - ᑕᑭᑦᑲᑦᑲᑦᑲᑦᑲᑦ
- ᑕᑭᑦᑲᑦᑲᑦᑲᑦᑲᑦᑲᑦ ᑕᑭᑦᑲᑦᑲᑦᑲᑦ (WH) ᑕᑭᑦᑲᑦᑲᑦᑲᑦᑲᑦ ᑕᑭᑦᑲᑦᑲᑦᑲᑦᑲᑦ (SH) ᑕᑭᑦᑲᑦᑲᑦᑲᑦᑲᑦ ᑕᑭᑦᑲᑦᑲᑦᑲᑦᑲᑦᑲᑦ





# ᑕᑦᑕᑦᑕᑦᑕᑦᑕ ᑕᑦᑕᑦᑕᑦᑕᑦᑕ ᑕᑦᑕᑦᑕᑦᑕᑦᑕ

- ᑕᑦᑕᑦᑕᑦᑕᑦᑕ ᑕᑦᑕᑦᑕᑦᑕᑦᑕ ᑕᑦᑕᑦᑕᑦᑕᑦᑕᑦᑕ ᑕᑦᑕᑦᑕᑦᑕᑦᑕᑦᑕ ᑕᑦᑕᑦᑕᑦᑕᑦᑕᑦᑕ
- ᑕᑦᑕᑦᑕᑦᑕᑦᑕ ᑕᑦᑕᑦᑕᑦᑕᑦᑕ ᑕᑦᑕᑦᑕᑦᑕᑦᑕᑦᑕ ᑕᑦᑕᑦᑕᑦᑕᑦᑕᑦᑕᑦᑕ
- ᑕᑦᑕᑦᑕᑦᑕᑦᑕᑦᑕ ᑕᑦᑕᑦᑕᑦᑕᑦᑕ ᑕᑦᑕᑦᑕᑦᑕᑦᑕᑦᑕᑦᑕ ᑕᑦᑕᑦᑕᑦᑕᑦᑕᑦᑕᑦᑕ ᑕᑦᑕᑦᑕᑦᑕᑦᑕᑦᑕᑦᑕ ᑕᑦᑕᑦᑕᑦᑕᑦᑕᑦᑕᑦᑕ ᑕᑦᑕᑦᑕᑦᑕᑦᑕᑦᑕᑦᑕ ᑕᑦᑕᑦᑕᑦᑕᑦᑕᑦᑕᑦᑕ ᑕᑦᑕᑦᑕᑦᑕᑦᑕᑦᑕᑦᑕ

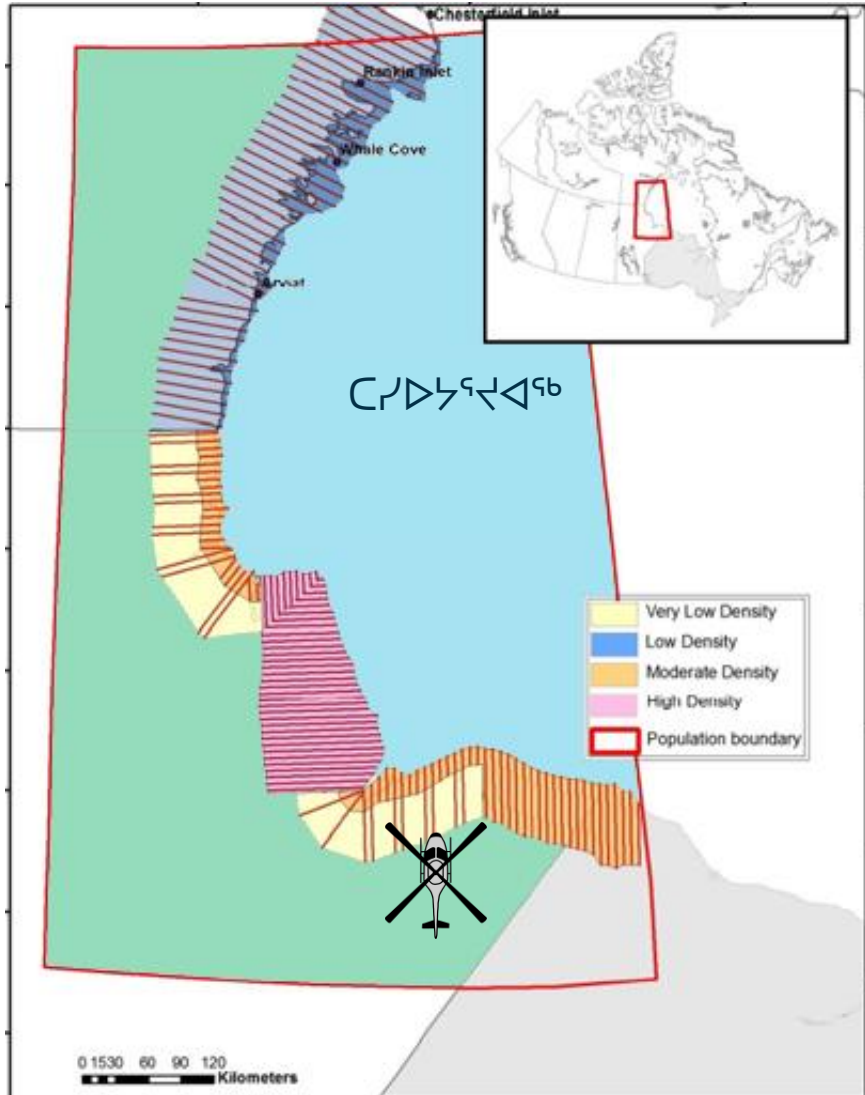




# ᓄᓂᓄᓐ ᓄᓂᓄᓐ ᓄᓂᓄᓐ ᓄᓂᓄᓐ ᓄᓂᓄᓐ

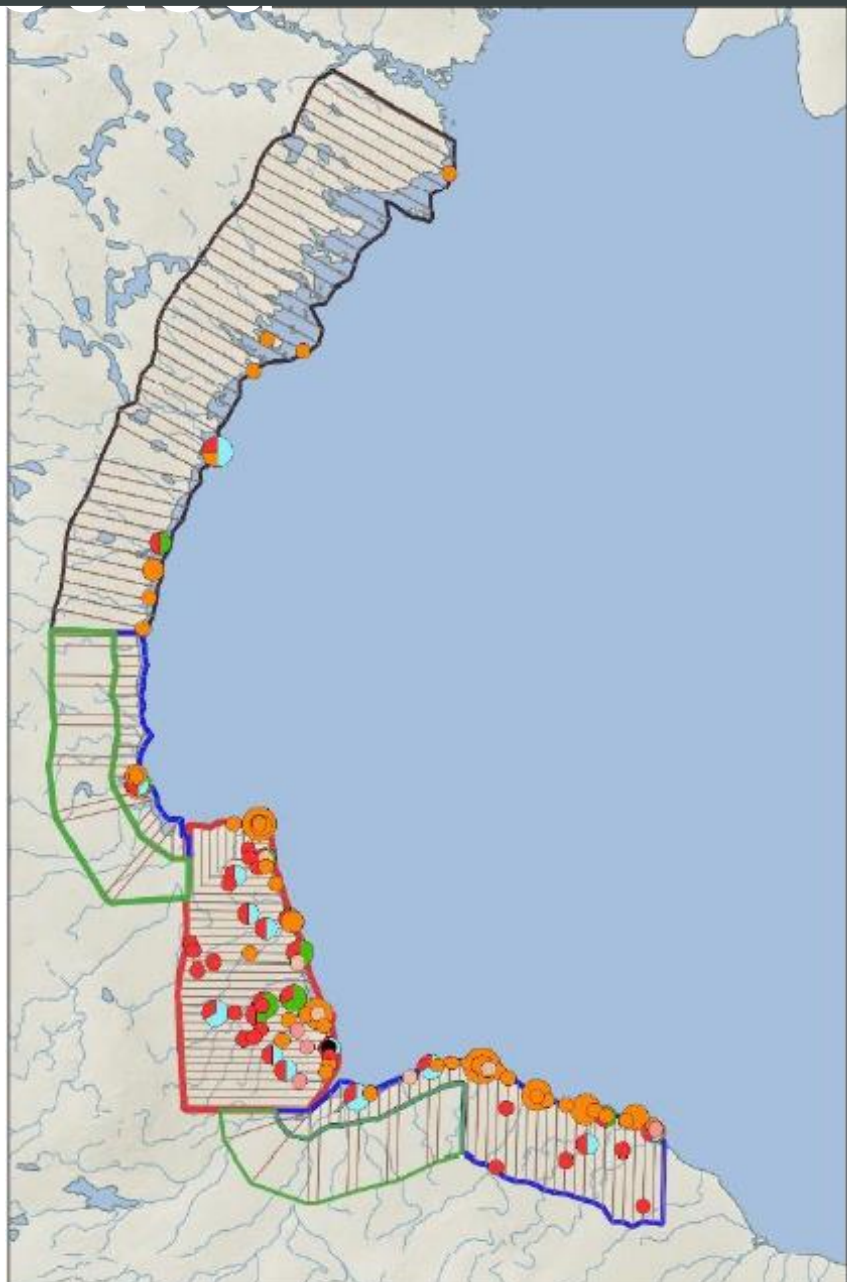
- ᓄᓂᓄᓐ ᓄᓂᓄᓐ ᓄᓂᓄᓐ ᓄᓂᓄᓐ 2016-ᓯᑦ ᓄᓂᓄᓐ ᓄᓂᓄᓐ
- ᓄᓂᓄᓐ 2016-ᓯᑦ ᓄᓂᓄᓐ ᓄᓂᓄᓐ:
  - 2011-ᓯᑦ ᓄᓂᓄᓐ ᓄᓂᓄᓐ ᓄᓂᓄᓐ
  - ᓄᓂᓄᓐ ᓄᓂᓄᓐ (IQ)
  - ᓄᓂᓄᓐ ᓄᓂᓄᓐ ᓄᓂᓄᓐ ᓄᓂᓄᓐ ᓄᓂᓄᓐ ᓄᓂᓄᓐ ᓄᓂᓄᓐ ᓄᓂᓄᓐ ᓄᓂᓄᓐ ᓄᓂᓄᓐ
- ᓄᓂᓄᓐ ᓄᓂᓄᓐ ᓄᓂᓄᓐ ᓄᓂᓄᓐ

- ᓄᓂᓄᓐ ᓄᓂᓄᓐ ᓄᓂᓄᓐ ᓄᓂᓄᓐ
- ᓄᓂᓄᓐ ᓄᓂᓄᓐ ᓄᓂᓄᓐ ᓄᓂᓄᓐ
- ᓄᓂᓄᓐ ᓄᓂᓄᓐ ᓄᓂᓄᓐ ᓄᓂᓄᓐ
- ᓄᓂᓄᓐ ᓄᓂᓄᓐ ᓄᓂᓄᓐ ᓄᓂᓄᓐ



ᑲᑦᑲᑦᑲᑦᑲᑦ  
ᑲᑦᑲᑦᑲᑦᑲᑦ  
ᑲᑦᑲᑦᑲᑦᑲᑦ

- 17,000 ᑲᑦᑲᑦᑲᑦᑲᑦ ᑲᑦᑲᑦᑲᑦᑲᑦ
- ᑲᑦᑲᑦᑲᑦᑲᑦ ᑲᑦᑲᑦᑲᑦᑲᑦ 194, 125-ᑲᑦᑲᑦᑲᑦᑲᑦ ᑲᑦᑲᑦᑲᑦᑲᑦ ᑲᑦᑲᑦᑲᑦᑲᑦ
- ᑲᑦᑲᑦᑲᑦᑲᑦᑲᑦᑲᑦᑲᑦ: 618 ᑲᑦᑲᑦᑲᑦᑲᑦ
- 8%-ᑲᑦᑲᑦᑲᑦ ᑲᑦᑲᑦᑲᑦᑲᑦ ᑲᑦᑲᑦᑲᑦᑲᑦ
- ᑲᑦᑲᑦᑲᑦᑲᑦᑲᑦ ᑲᑦᑲᑦᑲᑦᑲᑦᑲᑦᑲᑦᑲᑦᑲᑦᑲᑦᑲᑦ
- ᑲᑦᑲᑦᑲᑦᑲᑦᑲᑦ ᑲᑦᑲᑦᑲᑦᑲᑦᑲᑦᑲᑦᑲᑦᑲᑦᑲᑦᑲᑦ



**Legend**

- Age and sex group (size)
- Female adult
- Male adult
- Yearling
- Male subadult
- Female subadult
- Cub
- Unknown adult
- Unknown subadult

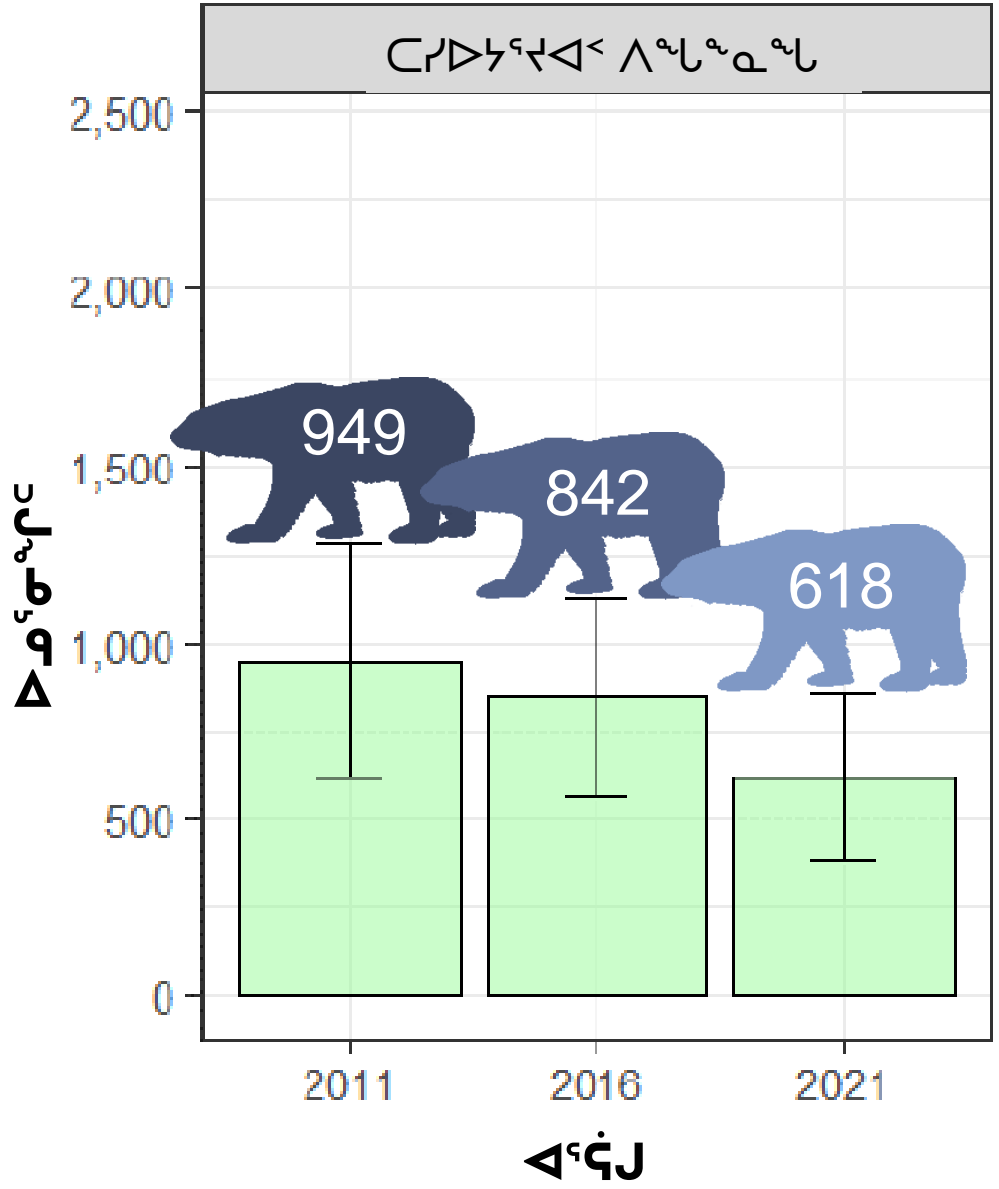
10  
 8  
 6  
 4  
 2

**Strata**

- High
- Low
- Moderate N
- Moderate S
- Very Low N
- Very Low S

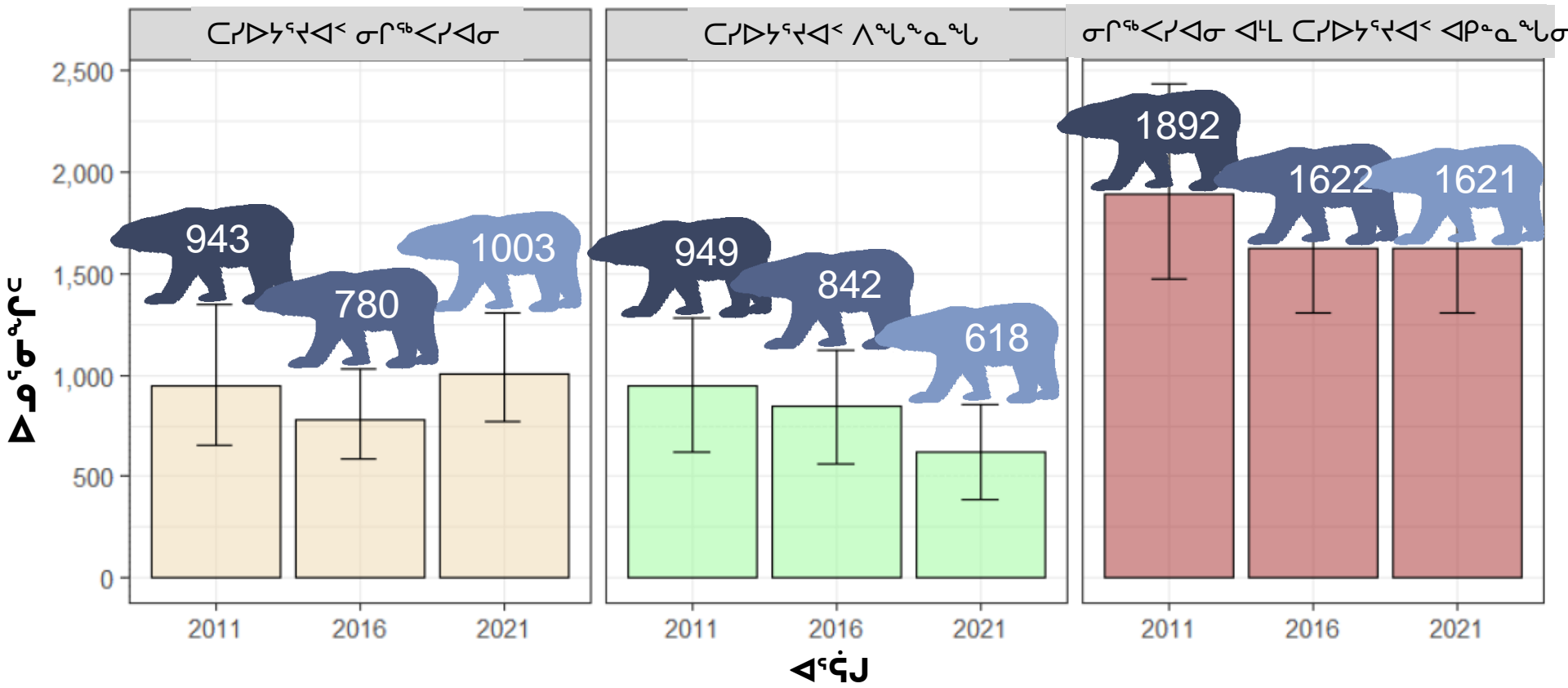
ᑕᑭᑭᑦᑲᑦ ᑕᑭᑭᑦᑲᑦ ᑕᑭᑭᑦᑲᑦ ᑕᑭᑭᑦᑲᑦ ᑕᑭᑭᑦᑲᑦ

- 17,000 ᑕᑭᑭᑦᑲᑦ ᑕᑭᑭᑦᑲᑦ
- ᑕᑭᑭᑦᑲᑦ ᑕᑭᑭᑦᑲᑦ 194, 125-ᑕᑭᑭᑦᑲᑦ ᑕᑭᑭᑦᑲᑦ ᑕᑭᑭᑦᑲᑦ
- ᑕᑭᑭᑦᑲᑦ ᑕᑭᑭᑦᑲᑦ: 618 ᑕᑭᑭᑦᑲᑦ
- 8%-ᑕᑭᑭᑦᑲᑦ ᑕᑭᑭᑦᑲᑦ ᑕᑭᑭᑦᑲᑦ
- ᑕᑭᑭᑦᑲᑦ ᑕᑭᑭᑦᑲᑦ ᑕᑭᑭᑦᑲᑦ ᑕᑭᑭᑦᑲᑦ
- ᑕᑭᑭᑦᑲᑦ ᑕᑭᑭᑦᑲᑦ ᑕᑭᑭᑦᑲᑦ ᑕᑭᑭᑦᑲᑦ



ᑕᑭᑭᑦᑲᑦ ᑕᑭᑭᑦᑲᑦ ᑕᑭᑭᑦᑲᑦ ᑕᑭᑭᑦᑲᑦ

- ᑕᑭᑭᑦᑲᑦ ᑕᑭᑭᑦᑲᑦ ᑕᑭᑭᑦᑲᑦ ᑕᑭᑭᑦᑲᑦ?
- ᑕᑭᑭᑦᑲᑦ ᑕᑭᑭᑦᑲᑦ ᑕᑭᑭᑦᑲᑦ ᑕᑭᑭᑦᑲᑦ?





Environment and  
Climate Change Canada

Environnement et  
Changement climatique Canada

### Distributional shifts of polar bears (*Ursus maritimus*) in Hudson Bay in relation to sea ice dynamics, 2017-2022 Final Report

D. McGeachy<sup>1,4</sup>, N. J. Lunn<sup>1</sup>, J. M. Northrup<sup>2</sup>, V. Trim<sup>3</sup>, C. Davis<sup>4</sup>, A. E Derocher<sup>4</sup>

<sup>1</sup> Environment and Climate Change Canada, CW-405 Biological Sciences Building, University of Alberta, Edmonton, AB T6G 2E9

<sup>2</sup> Ontario Ministry of Natural Resources and Forestry, DNA Building B217, Trent University, 2140 East Bank Drive, Peterborough, ON K9L 1Z8

<sup>3</sup> Manitoba Department of Natural Resources and Northern Development, Water Stewardship and Biodiversity Division, Wildlife and Fisheries Branch, Box 28, 59 Elizabeth Drive, Thompson, MB R8N 1X4

<sup>4</sup> Department of Biological Sciences, University of Alberta, Edmonton, AB T6G 2E9

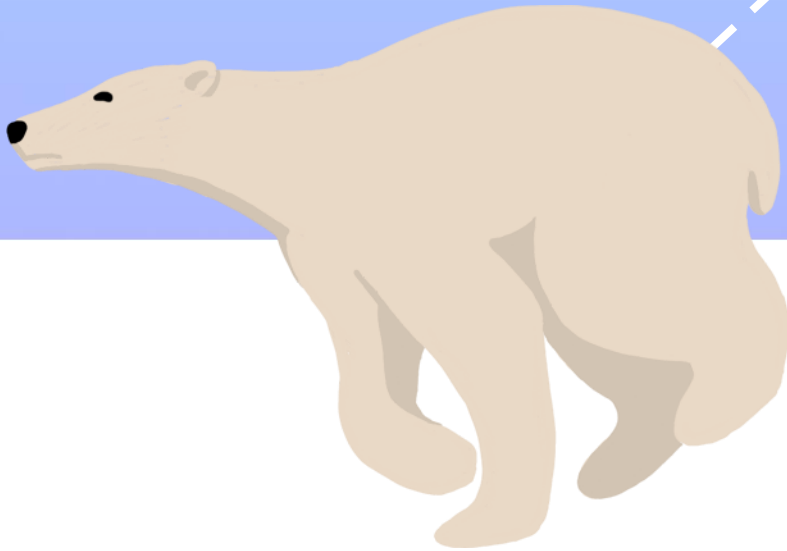


ᑕᐃᐃᑦ ᐱᑦᑭᑦ  
ᑭᑦᑭᑦᑭᑦ  
ᐃᑭᑦᑭᑦᑭᑦᑭᑦ ᐃᑭᑦᑭᑦᑭᑦ  
ᐃᑭᑦᑭᑦᑭᑦᑭᑦ ᐃᑭᑦᑭᑦᑭᑦᑭᑦ





# ፍሬስቲክሌት ለጥቅም ላይ ላይ የሚውል ማሽን



# ፍጥረት ለሕይወት ለሚያስፈልገው የሚጠቀሙትን ስርዓቶች



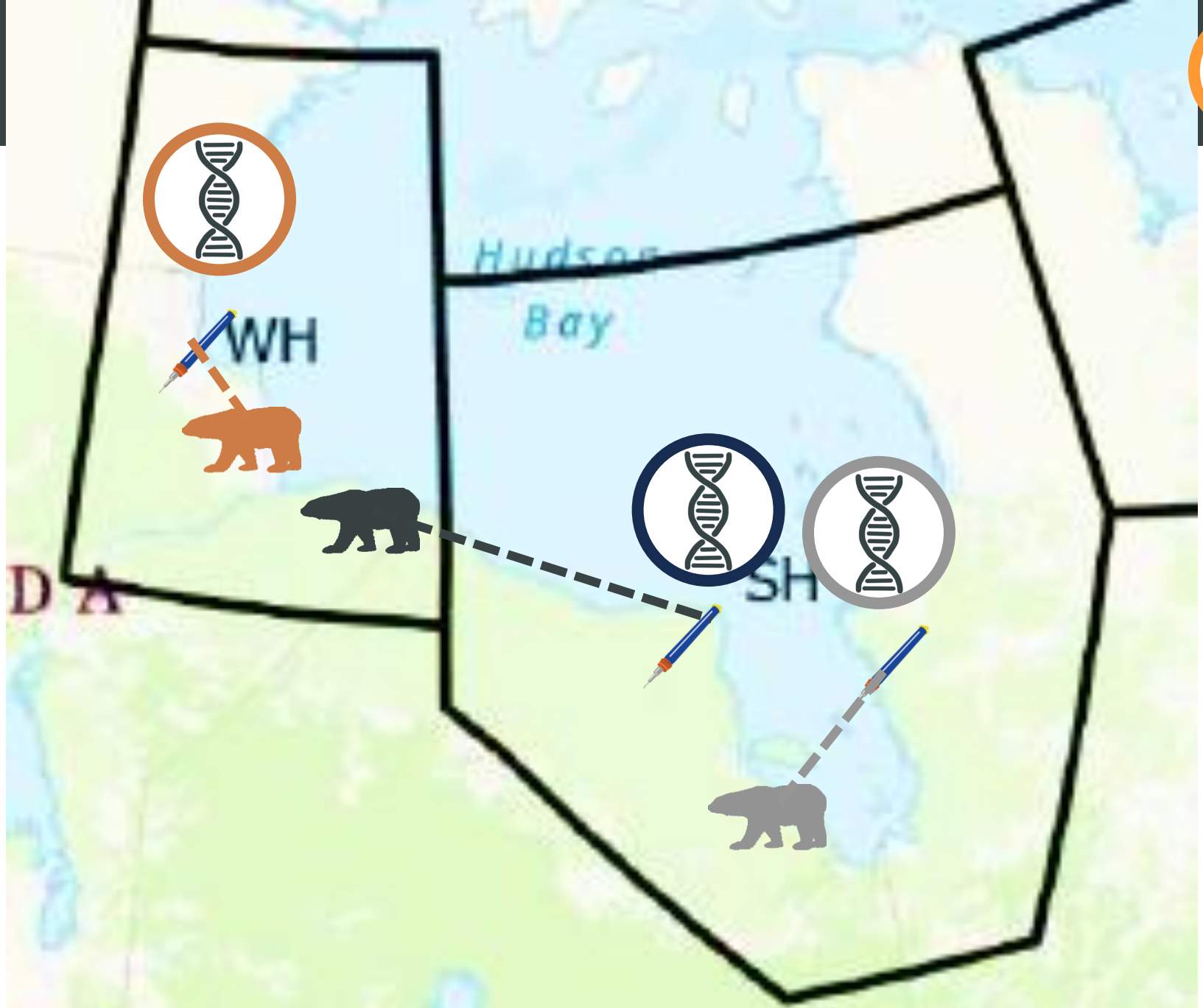
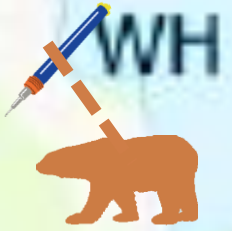
## የሕይወት ስርዓት/የሕይወት ስርዓት



- ለሕይወት ስርዓት ለሚያስፈልገው የሚጠቀሙትን ስርዓቶች







Hudson Bay

WH

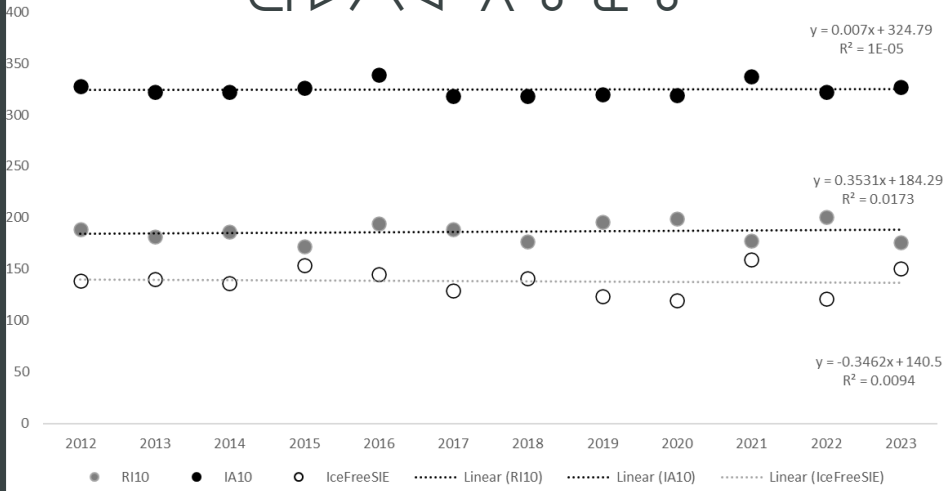
SH

DA

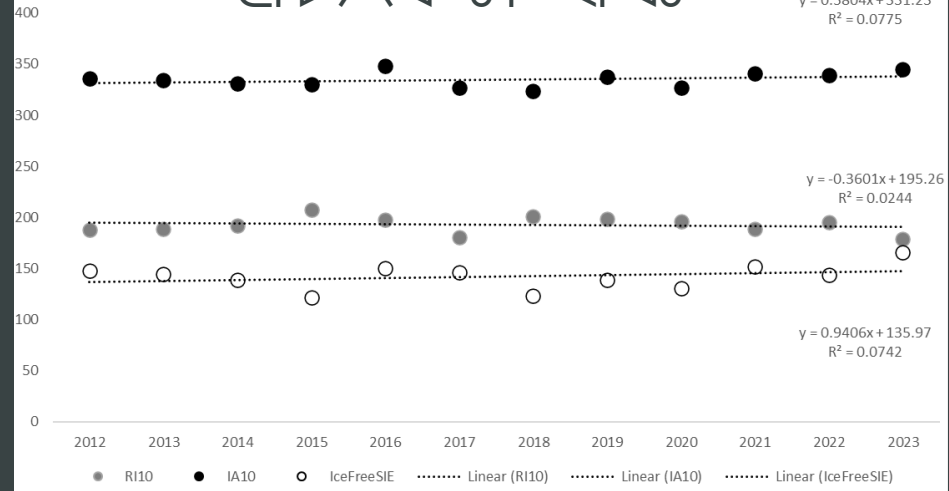
# ፍጠራዊ ምርመራ - ርብረብ ገጽ ልዩ ልዩ ምርመራ



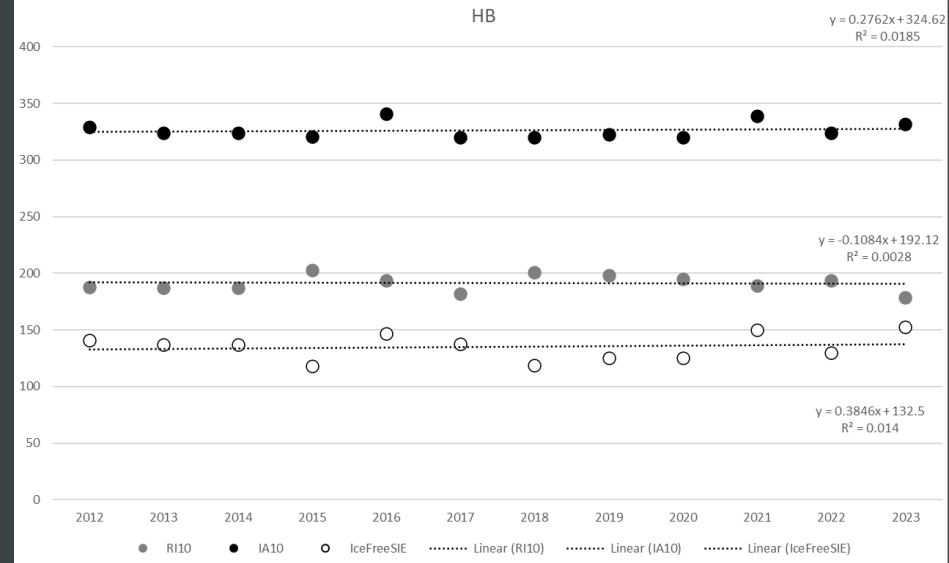
## ርገገገገ ለግግግ



## ርገገገገ ምርመራ



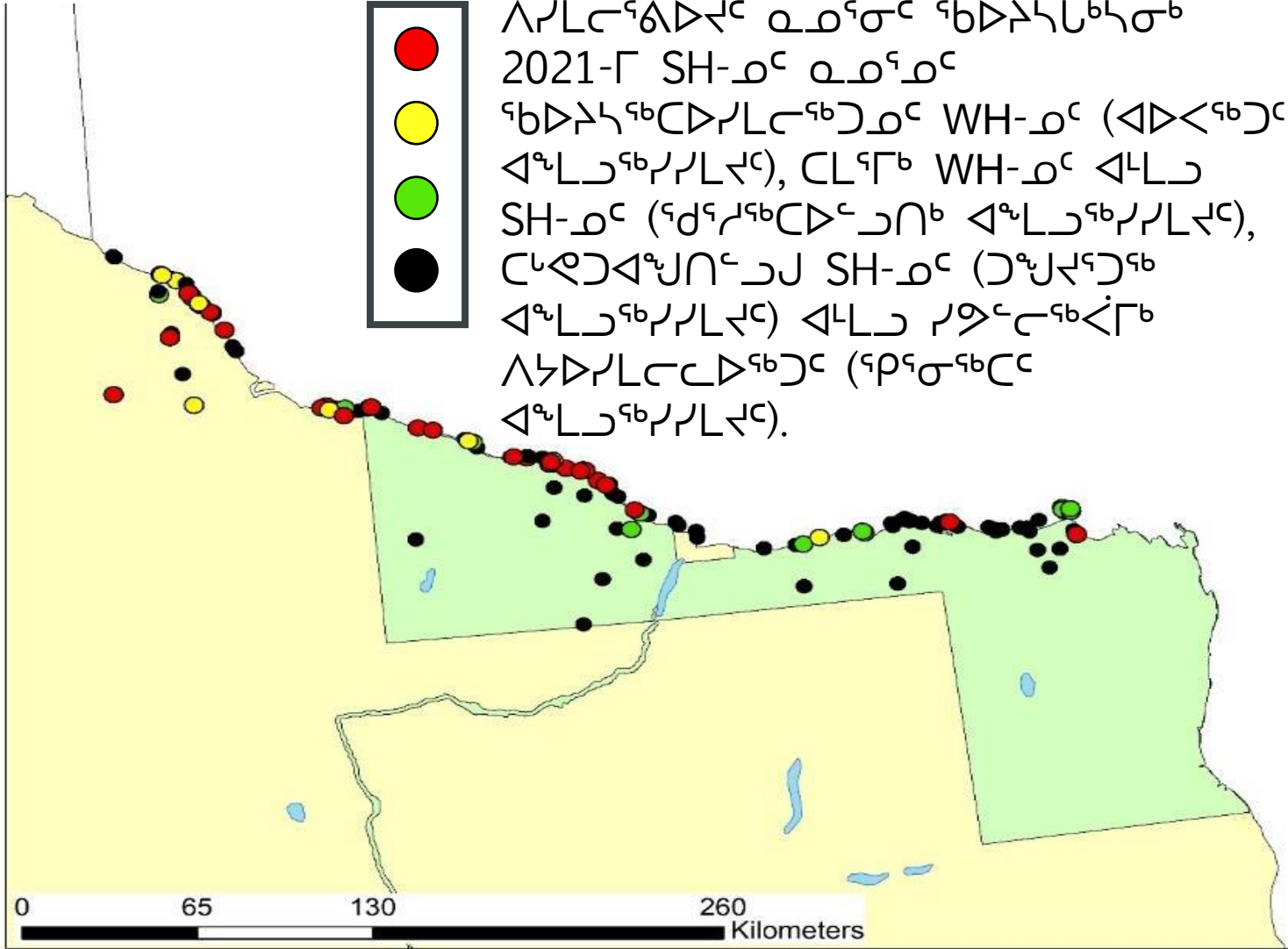
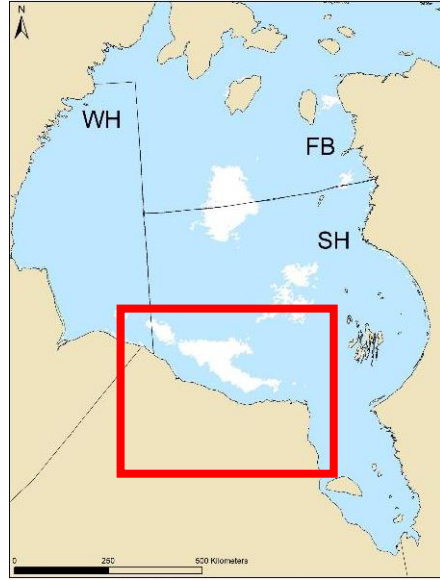
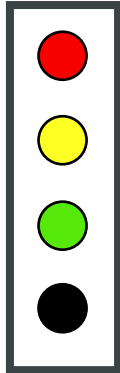
## HB



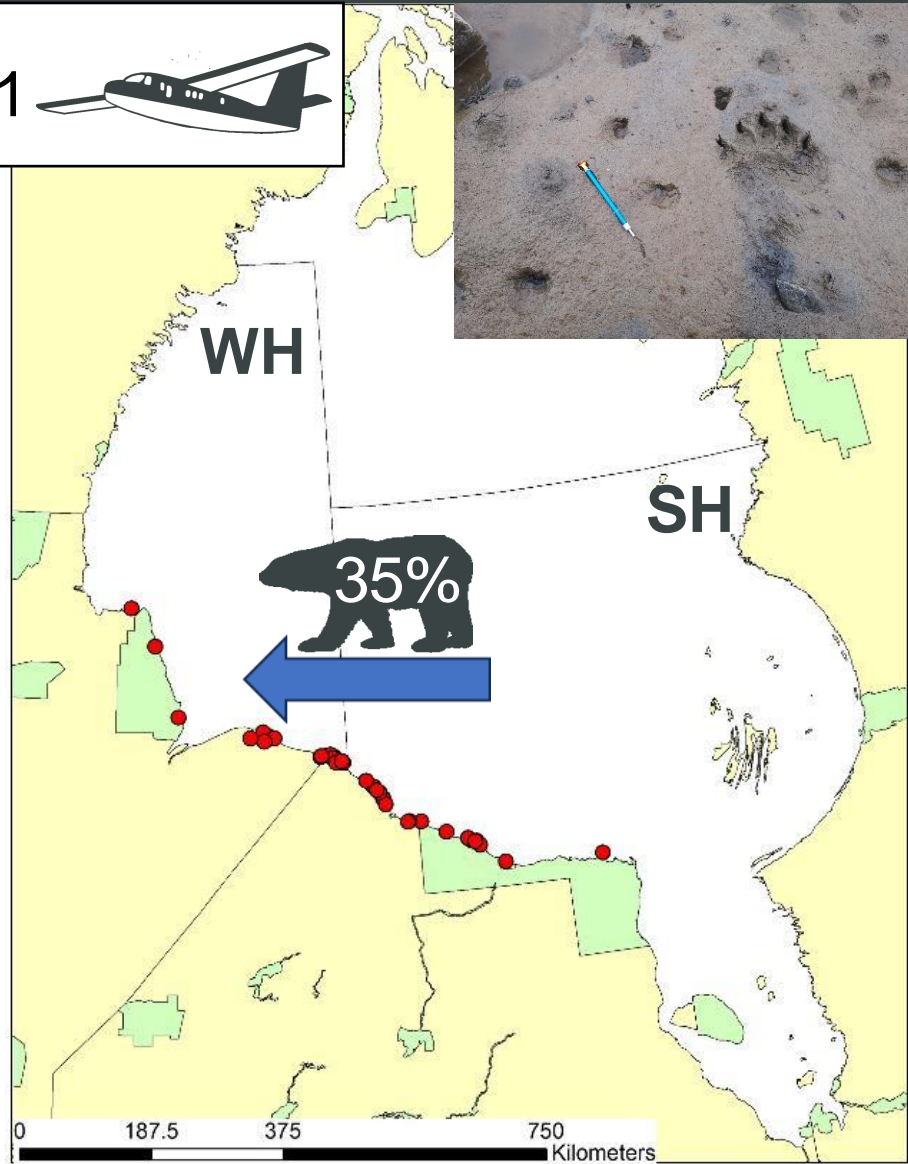
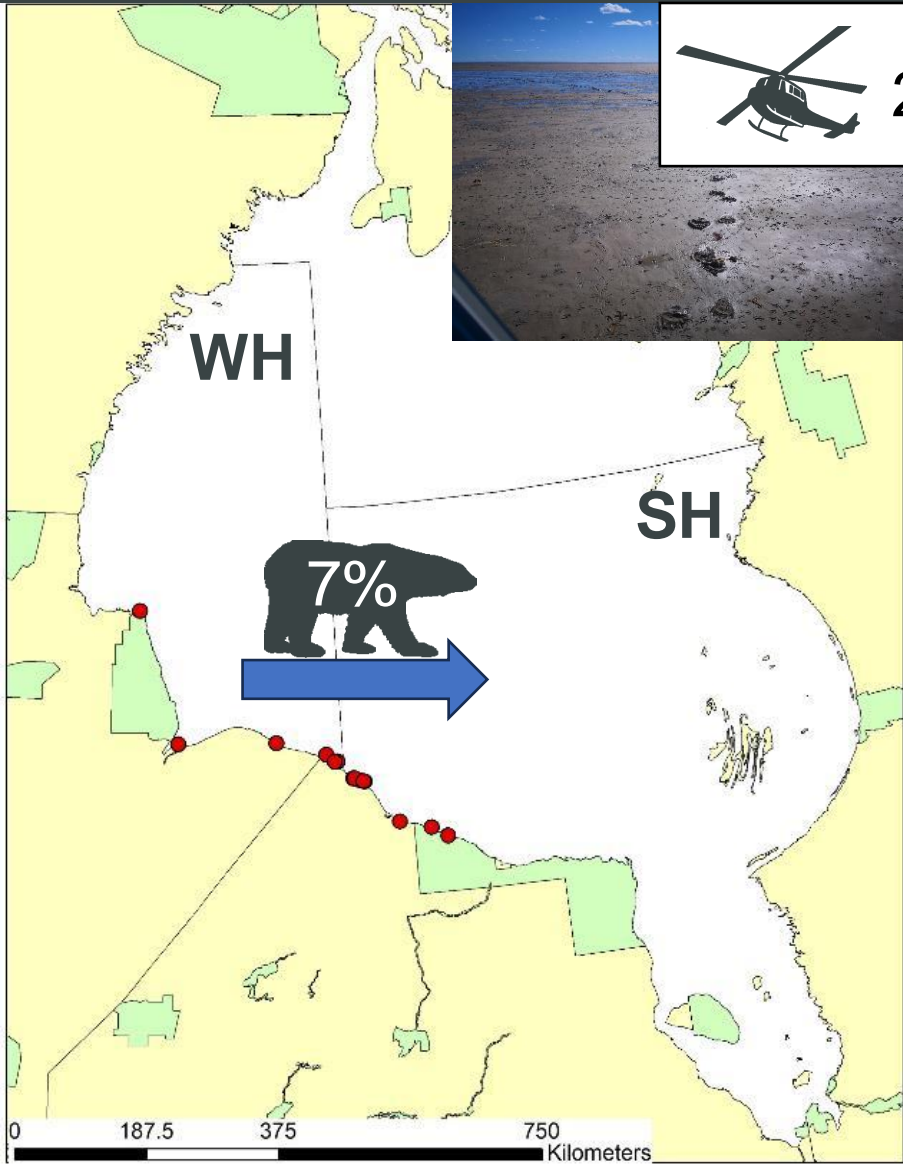
# ኅይወተ-ሥነ-ምግባር - 2021 SH-ወር ስድራ ስድራ ገጽ



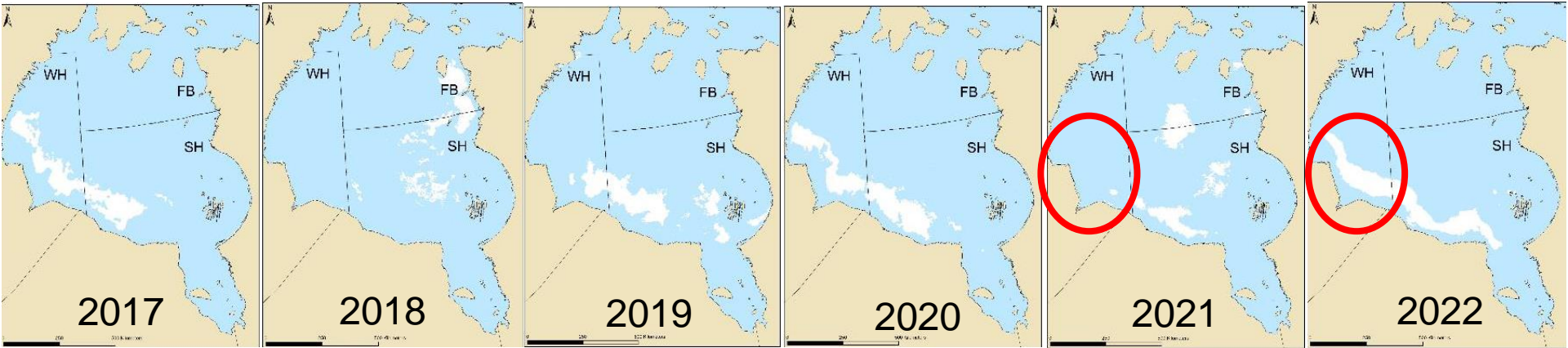
በበሽታ-ሥነ-ምግባር 6. ኅይወተ-ሥነ-ምግባር ወይንም ለሥነ-ምግባር ወይንም ኅይወተ-ሥነ-ምግባር 2021-፲ SH-ወር ወይንም ኅይወተ-ሥነ-ምግባር WH-ወር (ሰሜን-ምስራቅ ምስራቅ-ምስራቅ), CL ምስራቅ WH-ወር ሰሜን-ምስራቅ SH-ወር (ምስራቅ-ምስራቅ ሰሜን-ምስራቅ), ምስራቅ-ምስራቅ SH-ወር (ምስራቅ-ምስራቅ ሰሜን-ምስራቅ) ለምስራቅ-ምስራቅ ሰሜን-ምስራቅ (ምስራቅ-ምስራቅ ሰሜን-ምስራቅ).



# ᑎᑕᑏᑏᑎᑏᑏᑎᑎ - WH-ᑏᑏ SH-ᑏᑏ ᑏᑏᑏ SH-ᑏᑏ WH-ᑏᑏ 2021/2022

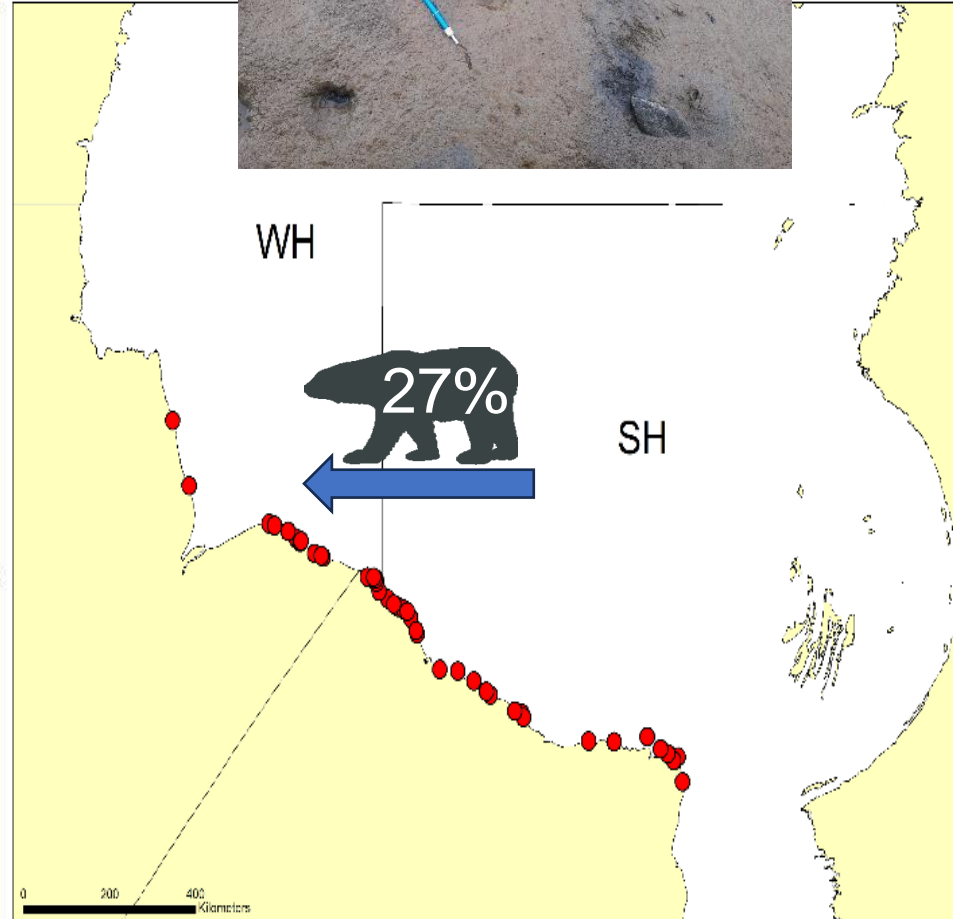
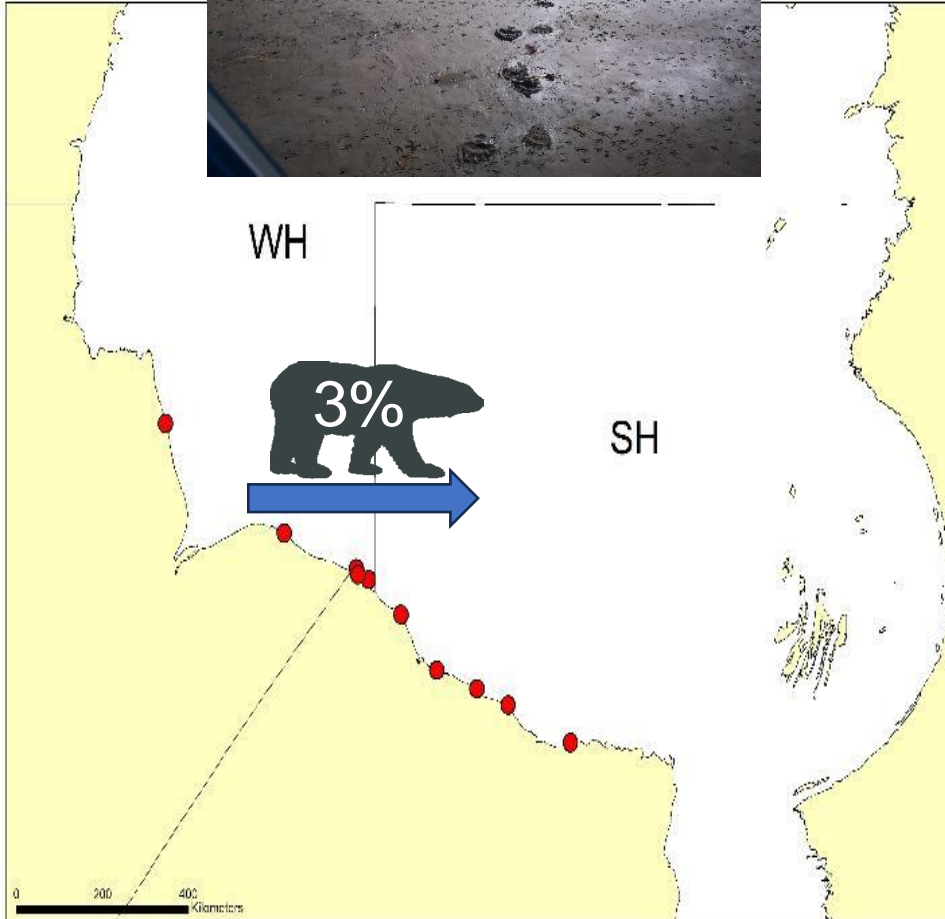


# Գեօմետրիկ - թյուրեմներ Վերականգնողական քաղաքականության Վերականգնողական քաղաքականության

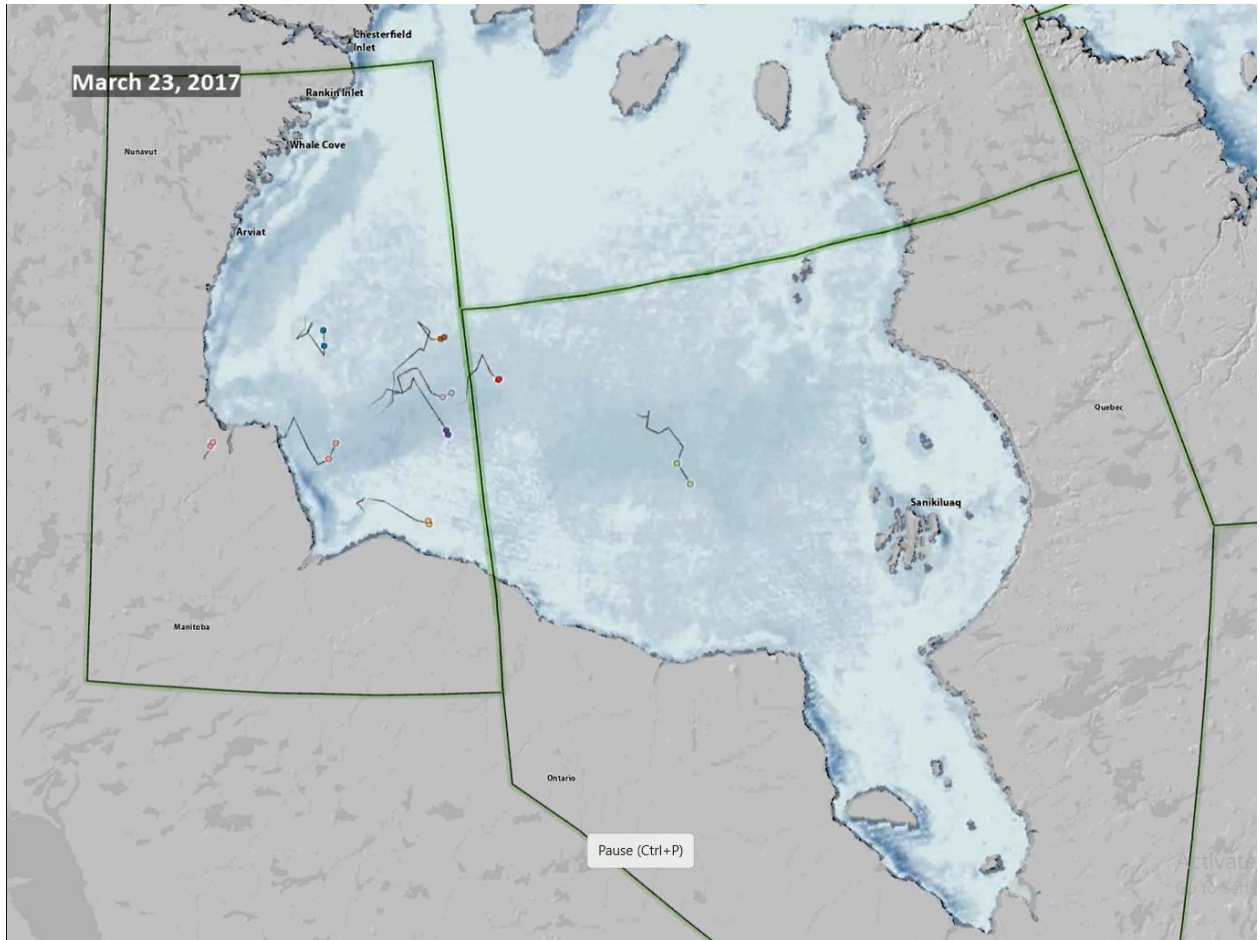




# ᑲᓄᐃᑦᓂᑦᑦᑦ - WH-ᓂᑦ SH-ᓂᑦ ᐱᑦᐱᑦ SH-ᓂᑦ WH-ᓂᑦ 2022/2023









- ግንዛቤ ማሳደግ የሚችል ግንዛቤዎን
  - "ገጠናዎን" ለማወቅ ይረዳል
  - ግንዛቤዎን ለማሳደግ ይረዳል



- ለግንዛቤ ማሳደግ ማዘጋጀት ይረዳል
  - ይህ ማዘጋጀት ግንዛቤዎን ይረዳል
  - ግንዛቤዎን ለማሳደግ ይረዳል



- ግንዛቤ ማሳደግ
  - ይህ ማዘጋጀት ግንዛቤዎን ይረዳል
  - ግንዛቤዎን ለማሳደግ ይረዳል



## ᐅᖃᐅᐱᕐ

- ᕐᕐ ᕐᐅᐱᕐ ᖃᐅᐱᕐ - ᐅᐱᕐᐅᐱᕐ
- ᖃᐅᐱᕐ ᖃᐅᐱᕐ/ᖃᐅᐱᕐ ᖃᐅᐱᕐ ᖃᐅᐱᕐ ᖃᐅᐱᕐ ᖃᐅᐱᕐ ᖃᐅᐱᕐ
- ᐱᖃᐅᐱᕐ ᖃᐅᐱᕐ ᖃᐅᐱᕐ ᖃᐅᐱᕐ ᖃᐅᐱᕐ ᖃᐅᐱᕐ
  - ᖃᐅᐱᕐ ᖃᐅᐱᕐ ᖃᐅᐱᕐ ᖃᐅᐱᕐ ᖃᐅᐱᕐ ᖃᐅᐱᕐ ᖃᐅᐱᕐ
  - ᖃᐅᐱᕐ ᖃᐅᐱᕐ ᖃᐅᐱᕐ ᖃᐅᐱᕐ ᖃᐅᐱᕐ ᖃᐅᐱᕐ ᖃᐅᐱᕐ
- ᖃᐅᐱᕐ ᖃᐅᐱᕐ ᖃᐅᐱᕐ ᖃᐅᐱᕐ ᖃᐅᐱᕐ ᖃᐅᐱᕐ
  - ᖃᐅᐱᕐ ᖃᐅᐱᕐ ᖃᐅᐱᕐ ᖃᐅᐱᕐ ᖃᐅᐱᕐ ᖃᐅᐱᕐ
  - ᖃᐅᐱᕐ ᖃᐅᐱᕐ ᖃᐅᐱᕐ ᖃᐅᐱᕐ ᖃᐅᐱᕐ ᖃᐅᐱᕐ
  - ᖃᐅᐱᕐ ᖃᐅᐱᕐ ᖃᐅᐱᕐ ᖃᐅᐱᕐ ᖃᐅᐱᕐ ᖃᐅᐱᕐ







ፍጥኔ ይገኝ!



ፍጥኔ ለግብርና ጋራ ጋራ ጋራ:

ግብርና ጋራ ጋራ



abohart@gov.nu.ca

ግብርና ጋራ ጋራ



evan.richardson  
@ec.gc.ca

ግብርና ጋራ ጋራ ጋራ ጋራ?