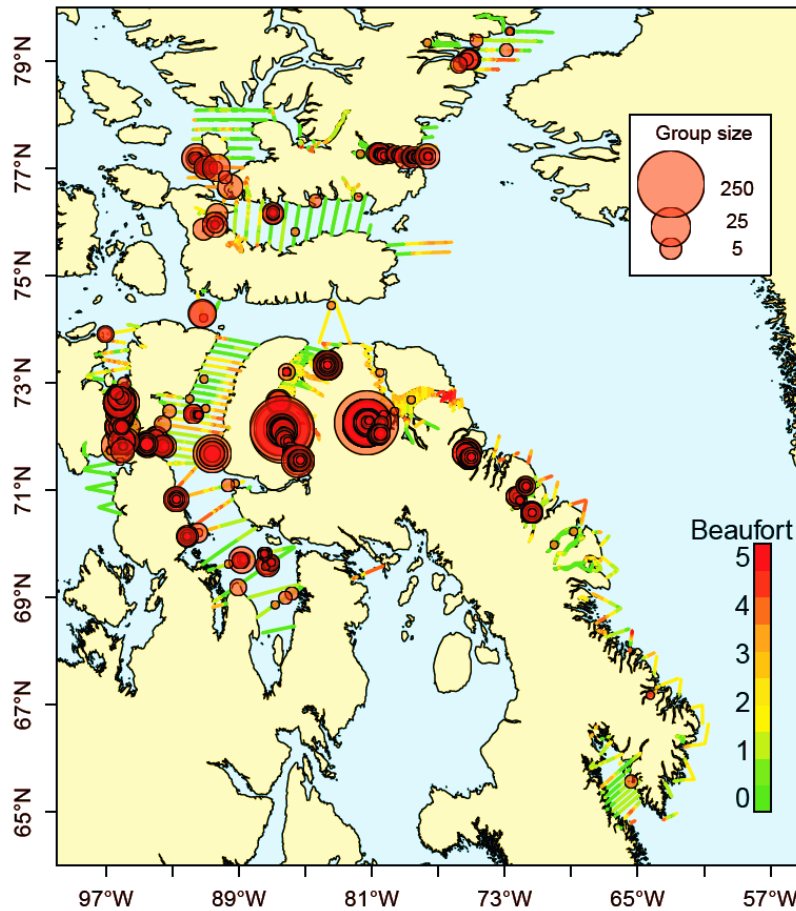


ለግብርና ቤብረት ልማት ስልጠና ለደቡብ አፍሪካ የግብርና ቤብረት ልማት ስልጠና ልማት ስልጠና ልማት ስልጠና



ርዕስ 3. ለደቡብ አፍሪካ የግብርና ቤብረት ልማት ስልጠና ለደቡብ አፍሪካ የግብርና ቤብረት ልማት ስልጠና ልማት ስልጠና ልማት ስልጠና ልማት ስልጠና

- Dietz, R., Richard, P.R., and Acquarone, M. 2001. Summer and Fall Movements of Narwhals (*Monodon monoceros*) from Northeastern Baffin Island towards Northern Davis Strait. *Arctic*, 54(3): 244–261.
- Doniol-Valcroze, T., Gosselin, J.-F., Pike, D., and Lawson, J. 2015a. Spatial modelling of narwhal density in fiords during the 2013 High Arctic Cetacean Survey (HACS). DFO Can. Sci. Advis. Sec. Res. Doc. 2015/059.
- Doniol-Valcroze, T., Gosselin, J.-F., Pike, D., Lawson, J., Asselin, N., Hedges, K., and Ferguson, S. 2015b. Abundance estimates of narwhal stocks in the Canadian High Arctic in 2013. DFO Can. Sci. Advis. Sec. Res. Doc. 2015/060.
- Heide-Jørgensen, M., Dietz, R., Laidre, K., and Richard, P. 2002. Autumn movements, home ranges, and winter density of narwhals (*Monodon monoceros*) tagged in Tremblay Sound, Baffin Island. *Polar Biol.* 25: 331–341.
- Laake, J.L., and Borchers, D.L. 2004. Methods for incomplete detection at distance zero. *In* *Advanced Distance Sampling*. Edited by S. T. Buckland, D.R. Anderson, K.P. Burnham, J.L. Laake, D.L. Borchers, and L. Thomas. Oxford University Press, Oxford. p. 108–189.
- Marques, T., Thomas, L., Fancy, S.G., Buckland, S.T., and Handel, C.M. 2007. Improving estimates of bird density using multiple-covariate distance sampling. *The Auk*. 124: 1229–1243.
- Marsh, H., and Sinclair, D. 1989. Correcting for visibility bias in strip transect aerial surveys of aquatic fauna. *J. Wildl. Manag.* 53(4): 1017–1024.
- Pike, D., and Doniol-Valcroze, T. 2015. Identification of duplicate sightings from the 2013 double-platform High Arctic Cetacean Survey. DFO Can. Sci. Advis. Sec. Res. Doc. 2015/034. v + 22 p.
- Richard, P.R. 2008. [On determining the Total Allowable Catch for Nunavut odontocete stocks.](#) DFO Can. Sci. Advis. Sec. Res. Doc. 2008/022. iv + 12 p.
- Richard, P.R. 2010. [Stock definition of belugas and narwhals in Nunavut.](#) DFO Can. Sci. Advis. Sec. Res. Doc. 2010/022. iv + 14 p.
- Richard, P.R., Weaver, P.A., Dueck, L.P., and Barber, D.G. 1994. Distribution and numbers of Canadian High Arctic narwhals (*Monodon monoceros*) in August 1984. *Meddelelser om Grønland - Bioscience*. 39: 41–50.
- Wade, P. R. 1998. Calculating limits to the allowable human caused mortality of cetaceans and pinnipeds. *Marine Mammal Science*. 14: 1–37.
- Watt, C.A., Orr, J., LeBlanc, B., Richard, P., and Ferguson, S.H. 2012. [Satellite tracking of narwhals \(*Monodon monoceros*\) from Admiralty Inlet \(2009\) and Eclipse Sound \(2010-2011\).](#) DFO Can. Sci. Advis. Sec. Res. Doc. 2012/046. iii + 17 p.
- Watt, C.A., Marcoux, M., Asselin, N.C., Orr, J.R., and Ferguson, S.H. 2015. Instantaneous availability bias correction for calculating aerial survey abundance estimates for narwhal (*Monodon monoceros*) in the Canadian High Arctic. DFO Can. Sci. Advis. Sec. Res. Doc. 2015/044. v + 13 p.

ጥናት ለምርመራ ለደብዳቤ ምርመራ ለደብዳቤ ምርመራ

Centre for Science Advice (CSA)
Central and Arctic Region
Fisheries and Oceans Canada
501 University Crescent
Winnipeg, MB, R3T 2N6

ጥያቄ: 204-983-5131

ኢሜይል አድራሻ: xcna-csa-cas@dfo-mpo.gc.ca

ኢንፎርሜሽን ሪፖርት: www.dfo-mpo.gc.ca/csas-sccs/

ISSN 1919-5087

© Canada ልዩ ልዩ ምርመራ ለደብዳቤ ምርመራ, 2015



ጥናት ለምርመራ ለደብዳቤ ምርመራ ለደብዳቤ ምርመራ

ጥናት ለምርመራ ለደብዳቤ ምርመራ ለደብዳቤ ምርመራ
ጥናት ለምርመራ ለደብዳቤ ምርመራ ለደብዳቤ ምርመራ
ጥናት ለምርመራ ለደብዳቤ ምርመራ ለደብዳቤ ምርመራ

Also available in English:

DFO. 2015. Abundance estimates of narwhal stocks in the Canadian High Arctic in 2013. DFO Can. Sci. Advis. Sec. Sci. Advis. Rep. 2015/046.

Aussi disponible en français :

MPO. 2015. Estimations de l'abondance des stocks de narvals dans l'Extrême-Arctique canadien en 2013. Secr. can. de consult. sci. du MPO, Avis sci. 2015/046.