

## **Marine mammal tag transfer policy and five-point narwhal quota carry-over rule**

### **Phase One<sup>1</sup>: Marine Mammal Tag transfers for narwhal harvesting when stocks are not mixed<sup>2</sup>.**

The purpose of Marine Mammal Tag transfers is to assist Regional Wildlife Organizations (RWOs) to:

1. Cover off over-harvest of a Community Harvest Limit (CHL) by allowing the exchange of unused Marine Mammal Tags between communities within the management unit, during the current narwhal harvesting year
2. Plan for, and allow, transfers of Marine Mammal Tags between communities within a management unit, during the current narwhal harvesting year, to maximize harvests in response to year to year variance in narwhal availability.
3. When there are not enough unused Marine Mammal Tags available for exchange, reconcile over-harvests within the management unit by reducing the following year's allocation and harvest from the community that over-harvested

### **General provisions of Phase One:**

1. Following the establishment of a Total Allowable Harvest Level (TAH) and Basic Needs Level (BNL) for each narwhal stock/population and the establishment of corresponding management units based on known summering areas, the BNL for each stock/population will be allocated annually, by the RWO to the Hunter and Trappers Organizations (HTO), in each management unit. The allocation will be in the form of Community Harvest Limits. Depending on whether or not a community harvests from mixed migratory stocks, each community will receive either an All-Season Community Harvest Limit, or a Summer-Season and Migratory-Season Community Harvest Limit. The number of Marine Mammal Tags a community receives will correspond to its Community Harvest Limit(s) (All- Season, Summer-Season and Migratory-Season).
2. A valid Marine Mammal Tag is required to hunt a narwhal.
3. Individual Marine Mammal Tags may only be used to land one narwhal.
4. Marine Mammal Tags may only be used in the harvest season for which they were issued. At the end of the season, any unused tags expire and cannot be used in subsequent years.
5. The transfer of Marine Mammal Tags is not permitted between management units.

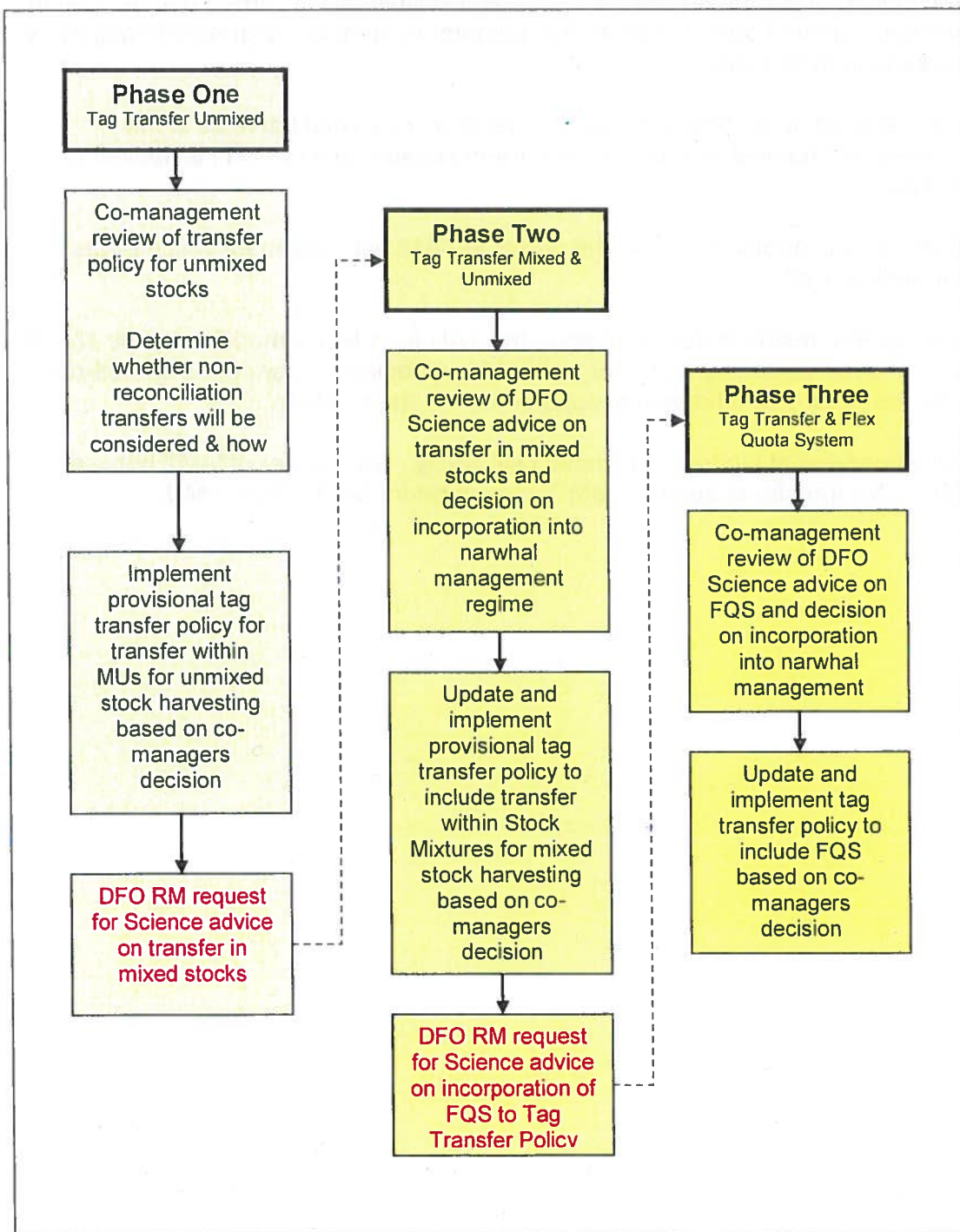
---

<sup>1</sup> These basic transfer provisions will be amended/expanded as required to reflect DFO Science advice on incorporation of mixed stock transfer in phase two and to reflect DFO Science advice on incorporation of a flexible quota system to the tag transfer policy in phase three (see figure 1).

<sup>2</sup> In the four Baffin Bay management units, stocks are not mixed when whales are in their summering areas. In the Northern Hudson Bay management unit, the stock is not mixed throughout the entire year

6. Transfers of Marine Mammal Tags are subject to RWO(s) pre-approval.
7. Marine Mammal Tag transfers between communities in a management unit are allowed for harvesting when stocks are not mixed, for the purposes identified above (i.e. to cover off an individual community's over-harvest, to maximize harvests or to reconcile over-harvests within the management unit) subject to pre-approval by the RWO(s).
8. Marine Mammal Tag transfers cannot occur once the sum of the Community Harvest Limit(s) (All-Season, Summer-Season) for that management unit in any given harvest season is reached.
9. Marine Mammal Tag transfers cannot occur during the Migratory-Season in any management unit.
10. In the event that insufficient Marine Mammal Tags are available within a management unit for harvest reconciliation, community over-harvests will be reconciled with a compensatory reduction in that HTO's annual Community Harvest Limit (All-Season, Summer-Season) by the RWO for the next narwhal harvest season.
11. Requests for Marine Mammal Tag transfers for any other purposes (e.g. cross-species tag transfers or barter for wildlife products) will be forwarded to the NWMB by the RWO for the management unit for decision on a case-by-case basis as per their authority under NLCA s.5.2.33 (k). Such requests can only be considered if the transfer does not jeopardize the conservation status of the stocks or populations of wildlife in question and does not violate the terms of the management regimes governing the specific wildlife species in question.

**Figure 1.** Flow chart depicting steps in a progressive, evidence based approach to development and implementation of a harvest tag/licence transfer policy for the 2013 narwhal fishery in the Nunavut Settlement Area. The chart delineates the steps required rather than the time sequence for the process.



#### **Five-point narwhal quota carry-over rule**

1. All unused quota for a given harvest season within MU is carried-over for use in the subsequent harvest season. (i.e. summer to summer; migratory to migratory; all season to all season)
2. Carried-over quota (MMT) is applied first to any narwhal harvests in the subsequent harvest season before current season quota (MMT) is applied to harvest.
3. Carried-over quota expires at the end of the harvest season for which it was carried-over into.
4. The system resets to zero whenever the TAH for a MU is modified by the NWMB (i.e. unused quota in a MU prior to the TAH modification cannot be carried-over into the subsequent harvest season under the "new" TAH)
5. All other rules of tag transfer Phase I still apply. No transfer of MMT between MUs. No transfer of summer MMT with migratory MMT within a MU.